

Land North of Guildford Road  
Rudgwick

# Arboricultural Impact Assessment

November 2025  
10816\_AIA.001 Rev A

| Project Details        |  |
|------------------------|--|
| <b>Client:</b>         | Welbeck Land                           |
| <b>Project:</b>        | Land North of Guildford Road, Rudgwick |
| <b>Report Title:</b>   | Arboricultural Impact Assessment       |
| <b>Project Number:</b> | 10816                                  |
| <b>File Reference:</b> | 10816_AIA.001 Rev A                    |
| <b>Date:</b>           | November 2025                          |

| Copyright  |
|--|
| The copyright of this document remains with Aspect Arboriculture Ltd. All rights reserved. The contents of this document therefore must not be copied or reproduced in whole or in part for any purpose without the written consent of Aspect Arboriculture Ltd. |

| Limitations  |
|--|
| This assessment has been prepared in respect of the proposed development and should not be interpreted as a report on tree health and safety. Reasonable effort has been made to identify visible defects whilst undertaking the tree survey; trees are, however, prone to natural failure without warning therefore no guarantee can be made as to the absolute safety of any of the trees surveyed. Aspect's opinion of tree condition and structural potential is therefore valid for a limited period of 12 months from the date of inspection. Validity is assumed in the absence of inclement weather and no change to the trees' existing context. Reliance should not be given to comments made in respect of other disciplines i.e. landscape, ecology or civil engineering without first consulting an appropriate expert. |

| Liability   |
|---|
| This report has been prepared for the exclusive use of the commissioning client and unless otherwise agreed in writing by Aspect Arboriculture Ltd. no other party may use or rely on the contents of the report. No liability is accepted by Aspect Arboriculture Ltd. for any use of this report, other than for the purposes for which it was originally prepared and provided. No warranty, express or implied, is made as to the advice in this report. The content of this report is partly based on information provided by third parties. Unless otherwise stated, information obtained from any third party has not been independently verified by Aspect Arboriculture Ltd. |

| Contact Details  |
|--|
| <b>Aspect Arboriculture Ltd.</b><br>Hardwick Business Park   Noral Way   Banbury   Oxfordshire   OX16 2AF<br>t 01295 276066 f 01295 265072 e info@aspect-arbor.com<br>w www.aspect-arbor.com |

# Contents

---

**Text:**

Executive Summary ..... 1

1 Introduction ..... 2

2 Statutory Designations ..... 4

3 Policy Review ..... 5

4 Arboricultural Impact..... 5

5 Conclusions ..... 12

6 Recommendations ..... 13

**Figures:**

|           |                                    |
|-----------|------------------------------------|
| Figure 1. | Initial access proposal            |
| Figure 2. | Submitted scheme’s access proposal |

**Tables:**

|          |   |
|----------|---|
| Table 1. | Tree Removals by BS5837:2012 Category.  |
| Table 2. | Extent of footpath proposed within RPAs |

**Appendices:**

|            |                         |                    |
|------------|-------------------------|--------------------|
| Appendix A | Tree Constraints Plan   | 10816 TCP 01 Rev A |
| Appendix B | Tree Survey Schedule    | 10816 TS 01 Rev A  |
| Appendix C | Tree Protection Plan    | 10816 TPP 01 Rev A |
| Appendix D | Tree Survey Methodology | 10816 TSM 01       |

## Executive Summary

- i) **Introduction:** Aspect Arboriculture are commissioned by Welbeck Land to prepare an Arboricultural Survey and Impact Assessment relating to the proposed introduction of residential development at Land North of Guildford Road, Rudgwick.
- ii) **Proposals:** The proposals comprise an outline Planning Application for up to 90 no. residential dwellings (including 45% affordable) all matters to be reserved apart from access.
- iii) **Surveys:** The site was surveyed by Aspect in November 2021 and updated during October 2024, following the guidance contained within BS5837:2012. Copies of the tree survey information are available within appendices A and B.
- iv) **Statutory Designations:** Background checks have confirmed that the site does not fall within a Conservation Area, but that one historic TPO affords protection to trees in close proximity to the site.
- v) **Arboricultural Impact:** The arboricultural impact of developing the site has been subject to an extensive iterative design process, which has succeeded in significantly reducing the effect in arboricultural terms.

Removals comprise one group of scrub, particularly low quality sections of one further collection alongside sections of hedge. The removals have been reduced as far as possible during the iterative process, and their loss can be compensated for with replacement planting.

A preliminary tree protection drawing is appended to this document to demonstrate the deliverability of safeguarding measures. Conclusions drawn against Horsham District Council's development control policies conclude that the development proposal is acceptable from the arboricultural perspective.



# 1 Introduction

## 1.1 Background & Proposals

- 1.1.1 Aspect Arboriculture are commissioned by Welbeck Land to prepare an Arboricultural Survey and Impact Assessment relating to the proposed introduction of residential development at Land North of Guildford Road, Rudgwick.
- 1.1.2 The proposals comprise an outline Planning Application for up to 90 no. residential dwellings (including 45% affordable) all matters to be reserved apart from access.
- 1.1.3 The application area falls within the administrative control of Horsham District Council, and currently comprises two agricultural fields to the north of Guildford Road, Rudgwick.
- 1.1.4 The application boundaries abut adjacent highway to the south and west (Guildford Road and Lynwick Street respectively). Intervening residential properties define the eastern portion of the southern boundary. To the north, the boundary is undefined, with continuing agricultural fields lying immediately outside the site extents, whilst to the east, playing fields occupy adjacent land .

## 1.2 Existing Tree Stock

- 1.2.1 By virtue of the existing site's agricultural management, the tree cover is focussed on the boundaries and can be described in terms of disparate cohorts.
- 1.2.2 The site's principal tree cover in arboricultural terms comprise mature standards set within the boundary hedgerows. The dominant high quality trees major on English Oak (ten), London Plane (three) and Lime (one). All are high quality components of the tree stock, providing a significant contribution to the amenity of the site and its surrounds; capable of long term retention, the trees are accordingly afforded Category A within BS5837:2012 guidance.
- 1.2.3 Moderate quality trees also occur throughout the boundary hedgerows. Again majoring on English Oak, the more varied composition also contains Field Maple, Sycamore and Lime. Worthy of individual mention, individual Field Maple and Horse Chestnut occur as outliers within each field. Typically early mature examples of their species, each lack the special quality necessary to attract the highest rating, but nevertheless provide a valuable contribution to the site and are capable of retention within a proposed scheme.
- 1.2.4 The survey contains 21no. trees that were either dead, or of particularly reduced physiological or structural condition such that their retention (regardless of development) is not recommended. This category includes Ash, Field maple, English Oak, Lime and Horse Chestnut. Of particular importance, a collection (G5) of Ash, Corsican Pine, Elm, Horse Chestnut, Lime, Goat Willow and Blackthorn occupies a section of the site's southern boundary. Comprising individuals in terminal decline and standing deadwood, the footprint was highlighted within initial design input as

providing an opportunity to deliver access from the south without affecting important trees to both east and west.

- 1.2.5 The remaining trees, groups and hedges are of low arboricultural quality and significance and typically represent unremarkable, less well established examples of their type, warranting category C only within best practice recommendations.

## **2 Statutory Designations**

### **2.1 Conservation Area**

- 2.1.1 Background checks have confirmed that the site does not occur within a Conservation Area (Horsham District Council, cited May 2025). Accordingly, the amenity value of the trees within the site is not elevated to preserving or enhancing any unique or distinctive interest linked to the setting.

### **2.2 Tree Preservation Orders**

- 2.2.1 Background checks have also confirmed that no trees within the site are scheduled within a Tree Preservation Order, but that TPO/0483 afford protection to trees to the east at Coopers Retreat, Bucks Green. (Horsham District Council, cited May 2025).

## 3 Policy Review

### 3.1 The National Planning Policy Framework

- 3.1.1 The NPPF (2024) provides planning policy guidance at a National level. With respect to arboriculture, four paragraphs are of particular relevance:
- 3.1.2 Paragraph 136 details the aspiration to secure increased tree cover within new developments, comprising both new tree planting, and the retention of existing trees where possible: *'Trees make an important contribution to the character and quality of urban environments, and can also help mitigate and adapt to climate change. Planning policies and decisions should ensure that new streets are tree-lined, that opportunities are taken to incorporate trees elsewhere in developments (such as parks and community orchards), that appropriate measures are in place to secure the long-term maintenance of newly-planted trees, and that existing trees are retained wherever possible.'*
- 3.1.3 Building upon paragraph 136, the Framework also considers that *'decisions should contribute to and enhance the natural and local environment by: recognising the intrinsic character and beauty of the countryside, and the wider benefits from natural capital and ecosystem services – including the economic and other benefits of the best and most versatile agricultural land, and of trees and woodland'* (para 187b).
- 3.1.4 In respect of Veteran Trees and Ancient Woodland, paragraph 193c requires that development proposals award particular consideration to these important features; *'development resulting in the loss or deterioration of irreplaceable habitats (such as ancient woodland and ancient or veteran trees) should be refused, unless there are wholly exceptional reasons and a suitable compensation strategy exists'*.
- 3.1.5 To confirm, there are no parcels of Ancient Woodland or veteran trees within influence of the application area. Subsequently it is anticipated that the tests of paragraph 193c will not be applied in respect to this development.
- 3.1.6 In addition, paragraph 193d also emphasises the benefit that can be secured through the provision of public access to, and resultant appreciation of, retained tree cover, stating: *'...opportunities to improve biodiversity in and around developments should be integrated as part of their design, especially where this can... enhance public access to nature where this is appropriate.'*

### 3.2 Horsham District Council

- 3.2.1 In terms of development control at a local level, Horsham District Council has a statutory obligation to ensure adequate provision is made for the preservation of trees through Section 197 of the Town and Country Planning Act (1990). The Horsham District Planning Framework (adopted November 2015) is understood to be the Council's current primary development control document; Policies 31, 33 and 34 set out the Council's tests pertinent to trees (relevant parts reproduced below).

### 3.2.2 POLICY 31 – Green Infrastructure and Biodiversity

3. *Where felling of protected trees is necessary, replacement planting with a suitable species will be required.*

### 3.2.3 POLICY 33 – Development Principles

*In order to conserve and enhance the natural and built environment developments shall be required to:*

6. *Presume in favour of the retention of existing important landscape features, for example trees, hedges, banks and watercourses. Development must relate sympathetically to the local landscape and justify and mitigate against any losses the may occur through the development;*

### 3.2.4 POLICY EE11 – Cultural and Heritage Assets

*The Council recognises that heritage assets are in irreplaceable resource and as such the Council will sustain and enhance its historic environment through positive management of development affecting heritage assets. Applications will be required to:*

7. *Retain and improves the setting of heritage assets, including views, public rights of way, trees and landscape features, including public realm features;*

## 3.3 Draft Horsham District Local Plan 2019-2036

3.3.1 It is also known that Horsham District Council are in the process of preparing a new Local Plan (Local Plan 2019-2036). A Regulation 19 draft has been published for consultation, within which Policies 14, 17 & 20 are relevant to trees in the context of development (relevant parts reproduced below).

### 3.3.2 STRATEGIC POLICY 14 – Countryside Protection

2. *In addition, all proposals must be appropriately integrated within the landscape and be of a scale appropriate to its countryside character and location. Development will be considered acceptable where it does not lead, either individually or cumulatively, to a significant increase in the overall level of activity in the countryside, and protects, conserves, and seeks to enhance, the key features and characteristics of the landscape character area in which it is located, including;*
  - b. *The pattern of woodlands, fields, hedgerows, trees, waterbodies and other features.*

### 3.3.3 STRATEGIC POLICY 17 – Green infrastructure and Biodiversity

3. *Proposals will be expected to retain and enhance existing priority habitats and trees, and accord with the aims and objectives of the Green Infrastructure and*

*Local Nature Recovery Strategies. Habitat enhancement including additional hedgerow and tree planting must take account of the local landscape and habitat context. It should seek to optimise biodiversity, ecological connectivity and function, and climate change resilience.*

10. *An appropriate buffer around woodland will be required, this will be at least 15m around Ancient Woodland or greater in accordance with good practice, and consideration should be given to the potential for protected species, such as bats, and impacts on hydrology. Around ancient and veteran trees a minimum buffer zone of at least 15 times larger than the diameter of the tree, or 5 metres from the edge of the tree's canopy whichever is the larger, will be required.*
11. *Where the felling of a tree is necessary, for example due to disease, replacement planting with a suitable species and location to retain the link with the wider network of habitats and Green Infrastructure, will be required.*

#### 3.3.4 STRATEGIC POLICY 20 – Development Principles

*In order to conserve and enhance the natural and built environment, and deliver beautiful and sustainable buildings and places, proposals for development will be supported provided that it meets all of the following:*

8. *Relates sympathetically to the local landscape and nature. Any losses or harm to landscape and natural features that may occur through the development will require justification and evidence that new opportunities will be provided or that mitigation or compensation for any loss will be provided;*

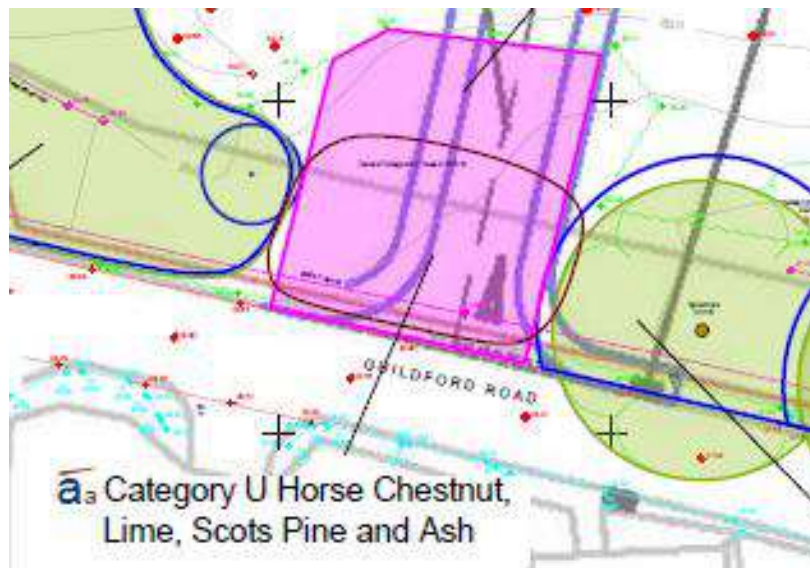
## 4 Arboricultural Impact

### 4.1 Iterative Design Process

4.1.1 The proposed development has been subject to a lengthy iterative design process, the purpose of which, from the arboricultural viewpoint, has been to minimise the scheme's effect on important trees. Key to this has been to site the vehicular and pedestrian accesses to avoid high quality trees and utilise the opportunity provided by dead and declining tree cover. This has been specifically sought to negate both the direct and indirect effects of the development; i.e. pressures borne out through both the construction stage and to realise a sustainable future relationship.

4.1.2 As illustrated within figure 1 below, the initial layout included roadway and footway within the RPAs of dominant trees along the southern boundary:

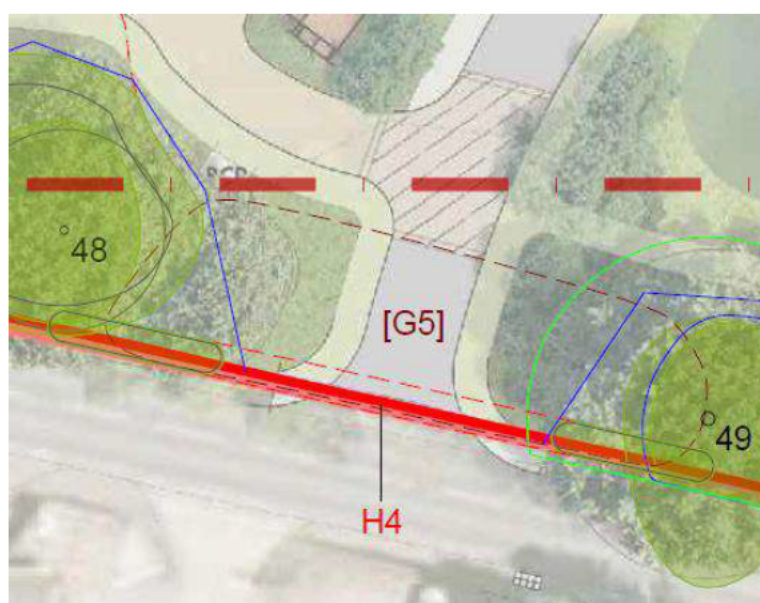
4.1.3 Figure 1: Initial access proposal



4.1.4 Over the course of a large number of iterations, this relationship has been improved, utilising solely the footprint of category U G5, confidently retaining the dominant trees; important for their contribution to the site's public amenity.



#### 4.1.5 Figure 2: Submitted scheme's access proposal



## 4.2 Tree Removals

4.2.1 Trees are recommended for removal where: a) it is necessary and unavoidable to site development within proximity to existing trees, such that they cannot be confidently retained in the long-term as living features, and/or b), where the amenity value of the tree will be significantly reduced as a result of the proposals, particularly if already of a low retention priority.

4.2.2 Tree removals are unavoidable to implement the proposed development, however, through design these have been both limited in number and comprise only low quality elements of the tree stock. The necessary tree removals are shown at Table 1 below and can be quantified as the removal of one group of scrub, particularly low quality sections of one further collection alongside sections of hedge. All moderate and high quality trees are confidently retained within the proposal.

4.2.3 **Table 1: Tree Removals by BS5837 Category.**

| Category A | Category B | Category C   |
|------------|------------|--|
| None       | None       | G4+ (c.19m and c.4.5m sections)<br>G7+ (scrub)<br>H1+ (c.3m section)<br>H2+ (c.2.5m section of scrub)<br>H4+ (c.21m section) |

+ Denotes collection formed of three or more species; refer to details within Appendix B

4.2.4 In addition to the tree removals listed above, it is recommended that category U trees (where within the application area) are removed on the grounds of sound arboricultural management. The only exception to this, is the retention of T45 (Ash) as a monolith, to preserve its current ecological contribution.



## 4.3 Vulnerable Trees

- 4.3.1 Thorough consideration has been given as to how the proposed development will interact with the site's retained trees. To realise the maximum degree of tree retention possible, it will be necessary to install three small sections of footpath within the RPAs of retained trees. The extent of each are detailed within Table 2 below, but in summary, all are within deliverable limits, subject to the principles outlined below being adhered to.

### Footpath Installation

- 4.3.2 It will be necessary to install hard surfacing within the RPAs of retained trees to introduce sections of footpath.
- 4.3.3 It is unavoidable that the sections of path pass through the RPAs of retained trees, however, subject to the preclusion of excavation (other than the removal of the vegetative layer), the works are not anticipated to have a detrimental effect on any tree's physiological or structural condition. As a precautionary measure, the footpath sections are to be founded on a CellWeb (or similar) where within the RPAs. This approach will negate the requirement for excavation and associated root severance.
- 4.3.4 Table 2: Extent of footpath proposed within RPAs

|     | Above Soil Footpath (m <sup>2</sup> /%) |       |
|-----|---|-------|
| T22 | 19.5m <sup>2</sup>                      | 19.1% |
| T39 | 20.3m <sup>2</sup>                      | 14.8% |
| T40 | 28.3m <sup>2</sup>                      | 10.4% |
| T41 | 5.8m <sup>2</sup>                       | 1.2%  |
| G6  | 19.1m <sup>2</sup>                      | n/a   |

## 4.4 Pruning Works<sup>1</sup>

- 4.4.1 Although not required to facilitate the development, It is recommended that dead wood and defective limbs are removed from retained trees where oversailing areas of high future use.
- 4.4.2 Pruning works should be undertaken in accordance with section 7.3 (for removal of deadwood), and section 7.8 (for selective pruning) of BS3998:2010, by a competent tree contractor, to ensure that cuts are performed correctly and positioned to avoid future structural defects or physiological issues, facilitate growth and maintain aesthetic value.

<sup>1</sup> All tree works should be timed to avoid the main nesting season for birds between 1st March and 31st August. If scheduled within this period it is recommended that an ecologist is present to advise on any necessary protective measures, and on hand to confirm that tree works are not likely to cause disturbance to nesting birds.

## 4.5 Protective Barriers

- 4.5.1 It will be important to protect retained trees' above-ground structures and underlying RPAs from damage during construction. To achieve this, tree protection barriers should be erected prior to the commencement of any works.
- 4.5.2 In this instance, the barriers proposed comprise the default specification within BS5837:2012. The alignment of the barriers is denoted with a blue line within the Tree Protection Plan at Appendix C.

## 4.6 Compensation Replanting

- 4.6.1 Although reduced through the iterative design process, the principle of tree removal to facilitate the proposed development generates a requirement for replacement planting, which has been recognised during design. Accordingly, the layout has been designed to provide opportunities for incorporating new and replacement tree planting throughout the site. The application is accompanied by landscape proposals (2164\_SCARP\_ZZ\_GF\_DR\_L\_00100 A), which illustrate the proposed approach to realising meaningful landscape provision within the application area.
- 4.6.2 The strategy includes significant areas of open space, throughout the development, and along the northern boundary. Within these areas, significant large canopy bearing species can be successfully introduced without concern regarding their ultimate size at maturity.
- 4.6.3 Within the development parcels themselves, publicly appreciable planting space is unavoidably more constrained, formed of street trees and planting within incidental areas of open space. In this situation, the proposed planting is anticipated to comprise domestic scale trees and structural planting, appropriate for the setting, which can serve to soften the development whilst providing seasonal interest.

## 5 Conclusions

- 5.1.1 To facilitate accordance with Horsham District Council's adopted and emerging Policies, the proposals have been informed and guided by a survey of the existing tree stock using the guidance provided at BS5837:2012.
- 5.1.2 The arboricultural effect of the proposed development comprises the removal of one group of scrub, particularly low quality sections of one further collection alongside sections of hedge. All moderate and high quality trees within the application area are retained as features of the development. The removals have been reduced as far as possible during the iterative process, and their loss can be compensated for with replacement planting. Three small sections of hard surface to provide footpaths will require above soil surface installation within the RPAs of three trees.
- 5.1.3 An effective scheme for safeguarding retained trees has been prepared which relies on the use of recognised construction methodologies; this is reinforced by precautionary reliance on arboricultural auditing where construction is proposed within influence of retained trees.
- 5.1.4 The proposed development is considered acceptable from the arboricultural perspective, subject to the adoption of safeguards for protecting trees during the works. It is our subsequent judgement that the proposals have been developed in accordance with Horsham District Council's adopted policies and the NPPF.

## 6 Recommendations

- 6.1.1 Pursuant to the Council's preference to ensure confident tree retention during the development, an Arboricultural Method Statement should be produced following detailed design, which expands on Appendix C. This work could be secured by Condition.
- 6.1.2 The Arboricultural Method Statement should address matters including: specification for tree protection barriers, revisions to barrier locations; a schedule of tree works; works within RPAs; a scheme for auditing tree protection and subsequent reporting to the Council should feature explicitly throughout. Detailed Tree Protection Drawings should be prepared to 1:500 scale to support the AMS, with detail given of proposed levels and service routes.

### Prepared By:

James Bardey BSc (Hons) MArborA  
Principal Arboricultural Consultant

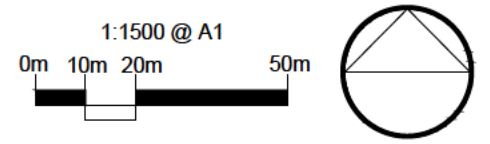
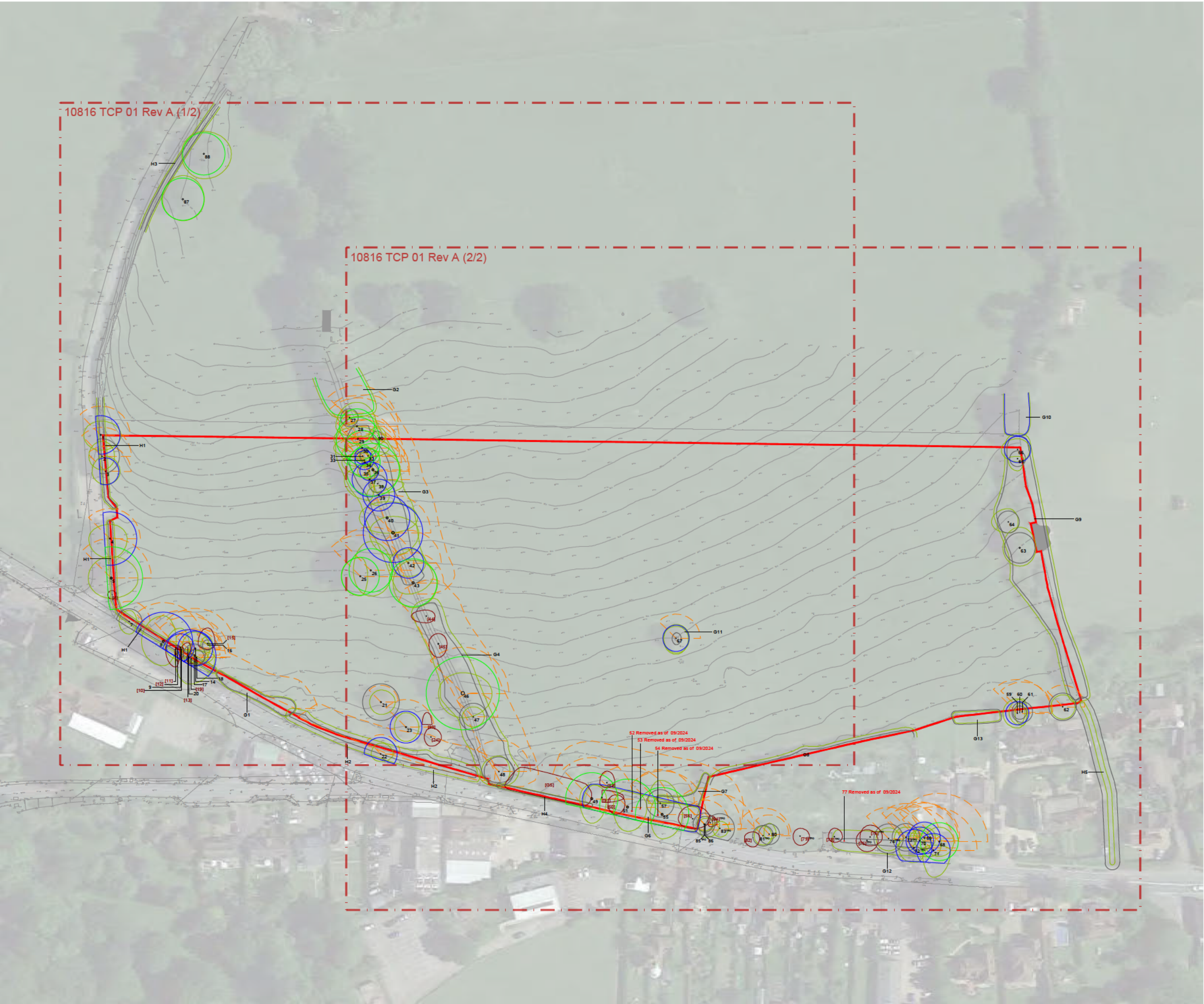
E: [REDACTED]  
T: 01295 276066

## APPENDICES

**APPENDIX A**

**TREE CONSTRAINTS PLAN (10816 TCP 01 Rev A)**





- KEY:**
- Site Boundary
  - Tree Numbers
  - Tree Canopies
  - Category 'U' Trees
  - Category 'A' RPA
  - Category 'B' RPA
  - Category 'C' RPA
  - Shading Arc

Note: Trees 1-5, 8, 9, 14, 22, 49, 51, 55, 71, 72, 83, 85, 89-91 have been plotted using measurements onsite in conjunction with aerial imagery. Their locations were not recorded on the topographical survey of the site (drawing ref: 19192-100-RevA.dwg).

Note: The RPA footprint for Trees 1-5, 8, 9, 14, 22, 49, 51, 55, 71, 72, 83, 85 have been displaced to allow for the effect of the adopted highway. The surface area of the RPA has not been reduced.



| REV | DATE | NOTE | Drawn | Chk'd |
|-----|------|------|-------|-------|
|     |      |      |       |       |

**aspect arboriculture**

TITLE  
Proposed Agricultural Access  
Lynwick Street, Rudgwick  
Tree Constraints Plan

CLIENT  
Welbeck Land

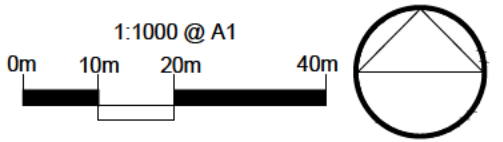
|  |                  |               |
|--|------------------|---------------|
| SCALE<br>1:1500 @ A3                           | DATE<br>OCT 2024 | DRAWN<br>KL   |
| DRAWING NUMBER<br>10816 TCP 01 Rev A(Overview) |                  | REVISION<br>A |

Based on:19192-100-RevA.dwg









- KEY:
- Site Boundary
  - Tree Numbers
  - Tree Canopies
  - Category 'U' Trees
  - Category 'A' RPA
  - Category 'B' RPA
  - Category 'C' RPA
  - Shading Arc

Note: Trees 1-5, 8, 9, 14, 22, 49, 51, 55, 71, 72, 83, 85, 89-91 have been plotted using measurements onsite in conjunction with aerial imagery. Their locations were not recorded on the topographical survey of the site (drawing ref: 19192-100-RevA.dwg).

Note: The RPA footprint for Trees 1-5, 8, 9, 14, 22, 49, 51, 55, 71, 72, 83, 85 have been displaced to allow for the effect of the adopted highway. The surface area of the RPA has not been reduced.



| REV | DATE | NOTE | Drawn | Chk'd |
|-----|------|------|-------|-------|
|     |      |      |       |       |

aspect arboriculture

TITLE  
Proposed Agricultural Access  
Lynwick Street, Rudgwick  
Tree Constraints Plan

CLIENT  
Welbeck Land

|   |                  |             |
|---|------------------|-------------|
| SCALE<br>1:1000 @ A3                      | DATE<br>OCT 2024 | DRAWN<br>KL |
| DRAWING NUMBER<br>10816 TCP 01 Rev A(2/2) | REVISION<br>A    |             |

Based on:19192-100-RevA.dwg

**APPENDIX B**

**TREE SURVEY SCHEDULE (10816 TS 01 Rev A)**

**BS 5837:2012 Tree Schedule: Land North of Guildford Road,  
Rudgwick, Horsham**



| Tree Number | Common Species Name | Trunk Diameter (mm)           | Height (m) | Crown Spread (m) |      |      |      |        | First Significant Branch (m) | Crown Clearance (m) | Life Stage   | Physiological Condition | Structural Condition | Comments   | BS5837 Category | RPA Radius (m) |
|-------------|---------------------|-------------------------------|------------|------------------|------|------|------|--------|------------------------------|---------------------|--------------|-------------------------|----------------------|--|-----------------|----------------|
|             |                     |                               |            | N                | E    | S    | W    | Radial |                              |                     |              |                         |                      |  |                 |                |
| 1           | English Oak         | 530                           | 12         | 5.75             | 8.25 | 6.25 | 7#   |        | 2.5                          | 1.5                 | Early Mature | Average                 | Indifferent          | Prominent within views from adjacent road<br>Situating within field boundary<br>Average internal deadwood<br>Minor epicormic growth on scaffold structure<br>Moderate example of species<br>Structure typical for species within current context   | B12             | 6.3*           |
| 2           | Ash                 | 320<br>270<br>180<br>160<br># | 12         | 6.25             | 5    | 5.5  | 5.5# |        | 3                            | 2.25                | Early Mature | Below Average           | Poor                 | Clad and obscured by Ivy, unable to thoroughly inspect<br>Stem inaccessible due to dense understory<br>Slightly sparse crown for species<br>Above average internal deadwood<br>Above average epicormic growth<br>Multi stemmed from ground level<br>Low arboricultural quality             | C1              | 5.7*           |
| 3           | Field Maple         | 410                           | 10.5       | 6.25             | 6    | 5.25 | 5.5# |        | 2.75                         | 2                   | Early Mature | Average                 | Indifferent          | Prominent within views from adjacent highway<br>Situating within field boundary<br>Minor internal deadwood<br>Dense crown, showing good signs of vitality<br>Moderate example of species<br>Stem slightly leans to east  | B12             | 4.8*           |
| 4           | English Oak         | 735#                          | 12.5       | 6                | 7    | 8    | 8.75 |        | 3                            | 2                   | Mature       | Average                 | Indifferent          | Heavily clad and obscured by Ivy, unable to thoroughly inspect<br>Prominent within views from adjacent road<br>Situating within field boundary<br>Average internal deadwood<br>Slightly sparse crown for species<br>Above average epicormic growth<br>Moderate example of species          | B12             | 8.7*           |
| 5           | English Oak         | 825 oi                        | 16.5       | 9                | 11   | 8.25 | 9.5  |        | 2.5                          | 1.5                 | Mature       | Average                 | Indifferent          | Heavily clad and obscured by Ivy, unable to thoroughly inspect<br>Prominent within views from adjacent road<br>Situating within field boundary<br>Cohesive with companions<br>Average internal deadwood<br>Above average epicormic growth<br>Principal component of sites western boundary | A2              | 9.9*           |
| 6           | Ash                 | 120#                          | 8          |                  |      |      |      | 1.75   | 3.5#                         | 5#                  | Semi Mature  | Below Average           | Poor                 | Stem inaccessible due to dense understory<br>In a state of terminal decline, unlikely to offer a long-term future contribution   | U               | N/A            |
| 7           | Ash                 | 3* 180<br>2* 120<br>2* 90     | 8.5        | 4.75             | 3    | 5#   | 4.25 |        | 1.5                          | 2.5                 | Early Mature | Below Average           | Poor                 | Clad and obscured by Ivy, unable to thoroughly inspect<br>Stem inaccessible due to dense understory<br>Situating within field boundary<br>Sparse crown for species<br>Dieback to upper crown<br>Structure typical for lapsed coppice stool<br>Low arboricultural quality                   | C1              | 4.5            |



| Tree Number | Common Species Name | Trunk Diameter (mm)      | Height (m) | Crown Spread (m) |      |      |      |        | First Significant Branch (m) | Crown Clearance (m) | Life Stage   | Physiological Condition | Structural Condition | Comments  | BS5837 Category | RPA Radius (m) |
|-------------|---------------------|--------------------------|------------|------------------|------|------|------|--------|------------------------------|---------------------|--------------|-------------------------|----------------------|---|-----------------|----------------|
|             |                     |                          |            | N                | E    | S    | W    | Radial |                              |                     |              |                         |                      |   |                 |                |
| 8           | English Oak         | 810 oi                   | 16         | 10.5             | 5.25 | 10#  | 9    |        | 3.25                         | 1.75                | Mature       | Below Average           | Indifferent          | Clad and obscured by Ivy, unable to thoroughly inspect<br>Prominent within views from adjacent highway<br>Situating within field boundary<br>Average internal deadwood of large diameter in lower crown<br>Slightly sparse crown for species<br>Above average epicormic growth<br>Slight lean to west | B12             | 9.6*           |
| 9           | English Oak         | 460                      | 16         | 8                | 3.75 | 5#   | 6    |        | 3.5                          | 2                   | Early Mature | Below Average           | Indifferent          | Prominent within views from adjacent highway<br>Situating within field boundary<br>Slightly sparse crown for species<br>Above average epicormic growth<br>Cohesive with companions  | B2              | 5.4*           |
| 10          | Ash                 | 260                      | 9          | 1                | 1    | 4    | 2.25 |        | 7.25                         | 9                   | Semi Mature  | Below Average           | Indifferent          | Very sparse canopy<br>In a state of terminal decline, unlikely to offer a long-term future contribution   | U               | N/A            |
| 11          | Ash                 | 370                      | 8.5        | 1                | 1.75 | 8    | 4.25 |        | 5.75                         | 5.5                 | Early Mature | Below Average           | Hazardous            | Sparse Canopy<br>Heavily suppressed by companion shelter with precarious lean to south west<br>Large column of decay extending throughout stem with reaction growth to south at c.1m<br>Unsuitable for retention<br>Woodpecker holes on main stem   | U               | N/A            |
| 12          | Ash                 | 270 oi                   | 5          | 0                | 1.25 | 5#   | 1.25 |        | 4#                           | 4#                  | Semi Mature  | Dead                    | Hazardous            | Heavily clad and obscured by Ivy, unable to thoroughly inspect<br>In a state of terminal decline, unlikely to offer a long-term future contribution   | U               | N/A            |
| 13          | Ash                 | 235                      | 9          | 2                | 1.25 | 2.5  | 2.25 |        | 3                            | 3#                  | Semi Mature  | Dead                    | Hazardous            | Standing deadwood   | U               | N/A            |
| 14          | English Oak         | 600                      | 16.5       | 6.75             | 6    | 6#   | 5.5  |        | 2.75                         | 2                   | Early Mature | Below Average           | Indifferent          | Prominent boundary feature<br>Average internal deadwood<br>Slightly sparse crown for species<br>Short annual extension growth<br>Above average epicormic growth<br>Cohesive with companions   | B12             | 6.9            |
| 15          | Ash                 | 440                      | 13.5       | 6.5              | 3    | 2.25 | 4    |        | 3.5                          | 2.5                 | Early Mature | Below Average           | Poor                 | Suffering from Ash Dieback<br>In a state of terminal decline, unlikely to offer a long-term future contribution<br>Fibre buckling at c.1m   | U               | N/A            |
| 16          | Hawthorn            | 100<br>90<br>80<br>2* 60 | 6          | 3.5              | 2    | 2.25 | 2.75 |        | n/a                          | 1.5                 | Semi Mature  | Below Average           | Indifferent          | Multi-stemmed from base<br>Low arboricultural quality   | C12             | 2.1            |
| 17          | Ash                 | 380                      | 10.5       | 6                | 8    | 4#   | 2    |        | 4.5                          | 2.5                 | Early Mature | Below Average           | Poor                 | Sparse crown for species<br>Above average epicormic growth<br>Heavily suppressed by dominant companion<br>Woodpecker hole on main stem at c.6m<br>Reduced future potential  | C12             | 4.5*           |

| Tree Number | Common Species Name | Trunk Diameter (mm)           | Height (m) | Crown Spread (m) |       |      |      |        | First Significant Branch (m) | Crown Clearance (m) | Life Stage   | Physiological Condition | Structural Condition | Comments   | BS5837 Category | RPA Radius (m) |
|-------------|---------------------|-------------------------------|------------|------------------|-------|------|------|--------|------------------------------|---------------------|--------------|-------------------------|----------------------|--|-----------------|----------------|
|             |                     |                               |            | N                | E     | S    | W    | Radial |                              |                     |              |                         |                      |  |                 |                |
| 18          | Ash                 | 270                           | 12         | 2.75             | 4.75  | 2#   | 2    |        | 7                            | 7                   | Semi Mature  | Below Average           | Poor                 | Situated within sites boundary<br>Above average epicormic growth<br>Unremarkable example of species<br>Heavily suppressed by dominant companion<br>Reduced future potential  | C12             | 3.3            |
| 19          | Ash                 | 380 oi #                      | 6          |                  |       |      |      | 2      | n/a                          | 3                   | Early Mature | Dead                    | Hazardous            | Stem failed at c.1.5-2m<br>Hung up within neighbouring T20   | U               | N/A            |
| 20          | English Oak         | 750 oi #                      | 17         | 3                | 10.75 | 11#  | 5.75 |        | 4                            | 6#                  | Mature       | Below Average           | Indifferent          | Clad and obscured by Ivy, unable to thoroughly inspect<br>Prominent within views from adjacent highway<br>Slightly sparse crown for species<br>Short annual extension growth<br>Above average epicormic growth<br>Scaffold structure and crown biased to south   | B2              | 9*             |
| 21          | Purple Plum         | 420<br>450                    | 7          | 5                | 5.75  | 5    | 4.75 |        | 2                            | 1.75                | Mature       | Below Average           | Poor                 | Standalone Specimen<br>Dieback to upper crown<br>Multiple <i>Phellinus pomaceus</i> fruiting bodies throughout main stem and primary scaffold structure<br>Browsing damage on lower stem<br>Reduced future potential   | C12             | 7.5            |
| 22          | Field Maple         | 380<br>200<br>170<br>140<br># | 8          | 4.5              | 5#    | 3#   | 4#   |        | 1.25                         | 1.5                 | Early Mature | Average                 | Indifferent          | Stem inaccessible due to dense understory<br>Situated within roadside verge<br>Average small diameter internal deadwood<br>Dense crown, showing good signs of vitality<br>Structure typical for lapsed coppice stool<br>Moderate example of species  | B1              | 5.7*           |
| 23          | Field Maple         | 560<br>455                    | 11.5       | 6                | 5.25  | 5.75 | 4.75 |        | 1.5                          | 1.5                 | Mature       | Average                 | Poor                 | Standalone Specimen<br>Minor internal deadwood<br>Minor epicormic growth on scaffold structure<br>Upper crown appears slightly sparse<br>Large burrs on lower stem<br>Lower stem obscured by Bramble<br>Moderate example of species  | B12             | 8.7            |
| 24          | Field Maple         | 340                           | 9.5        | 3.75             | 4.25  | 3.75 | 2.75 |        | 2                            | 1.75                | Early Mature | Dead                    | Poor                 | Standalone Specimen<br>Sparse crown for species<br>Above average internal deadwood<br>Above average dieback<br>Reduced future potential  | U               | 4.2            |
| 25          | English Oak         | 660                           | 17         | 7.75             | 3     | 8    | 7.75 |        | 3.25                         | 1.75                | Early Mature | Average                 | Indifferent          | Visually prominent individual<br>Average internal deadwood<br>Minor epicormic growth on scaffold structure<br>Situated within interior of field<br>Mutually suppressed and cohesive with T26 forming one single canopy<br>High value as prominent pair with T26<br>Minor fibre buckling on lower stem! | A2              | 7.8            |

| Tree Number | Common Species Name | Trunk Diameter (mm)                 | Height (m) | Crown Spread (m) |      |      |       |        | First Significant Branch (m) | Crown Clearance (m) | Life Stage   | Physiological Condition | Structural Condition | Comments  | BS5837 Category | RPA Radius (m) |
|-------------|---------------------|-------------------------------------|------------|------------------|------|------|-------|--------|------------------------------|---------------------|--------------|-------------------------|----------------------|---|-----------------|----------------|
|             |                     |                                     |            | N                | E    | S    | W     | Radial |                              |                     |              |                         |                      |   |                 |                |
| 26          | English Oak         | 760                                 | 18         | 12               | 8.75 | 10.5 | 7.25  |        | 3.25                         | 1.75                | Mature       | Average                 | Indifferent          | Average internal deadwood of large diameter in lower crown<br>Minor epicormic growth on scaffold structure<br>Minor dieback to tips<br>Good example of species<br>Situating within interior of field<br>Mutually suppressed and cohesive with T25 forming one single canopy   | A12             | 9              |
| 27          | Field Maple         | 180<br>160<br>130<br>120<br>90<br># | 6          | 3#               | 3.5  | 2.75 | 5     |        | n/a                          | 1.75                | Early Mature | Below Average           | Poor                 | Inaccessible, offsite within adjacent third-party land, unable to thoroughly inspect<br>Sparse crown for species<br>Multi stemmed from ground level<br>Unremarkable example of species  | C12             | 3.6            |
| 28          | English Oak         | 600                                 | 17         | 10#              | 8    | 4.25 | 8.75  |        | 3.75                         | 3.5                 | Early Mature | Average                 | Indifferent          | Average internal deadwood of large diameter in lower crown<br>Upper crown appears slightly sparse<br>Dominant component of internal field boundary collection<br>Mutually suppressed and cohesive forming one single canopy<br>Reliant on companion shelter<br>Compacted RPA due to heavy cattle usage<br>High value as component of wider collection forming sites principal arboricultural feature  | A2              | 6.9            |
| 29          | English Oak         | 675<br>300                          | 17         | 5                | 9    | 5.25 | 10    |        | 2.5                          | 2.25                | Early Mature | Average                 | Poor                 | Average internal deadwood of large diameter in lower crown<br>Minor dieback to tips<br>Natural bracing on lower scaffold to west<br>Included primary union, stems fused from c.1.5m - 3.5m<br>Dominant component of internal field boundary collection<br>Mutually suppressed and cohesive forming one single canopy<br>Reliant on companion shelter<br>Compacted RPA due to heavy cattle usage<br>High value as component of wider collection forming sites principal arboricultural feature | A2              | 8.7            |
| 30          | English Oak         | 590                                 | 14.5       | 4.75             | 11   | 4    | 11.75 |        | 2                            | 2.25                | Early Mature | Average                 | Indifferent          | Average internal deadwood<br>Minor epicormic growth on scaffold structure<br>Crown breaks low<br>Minor browsing damage on lower stem<br>Dominant component of internal field boundary collection<br>Mutually suppressed and cohesive forming one single canopy<br>Reliant on companion shelter<br>Compacted RPA due to heavy cattle usage<br>High value as component of wider collection forming sites principal arboricultural feature   | A2              | 7.2            |
| 31          | English Oak         | 270                                 | 15         | 4.75             | 3.75 | 2    | 9     |        | 4.5                          | 2.25                | Semi Mature  | Average                 | Indifferent          | Average internal deadwood<br>Minor epicormic growth on scaffold structure<br>Etiolated form<br>Component of internal field boundary collection<br>Mutually suppressed and cohesive forming one single canopy<br>Reliant on companion shelter<br>Compacted RPA due to heavy cattle usage<br>Individually of low significance, conferred moderate value as component of wider collective only   | B2              | 3.3            |



| Tree Number | Common Species Name | Trunk Diameter (mm) | Height (m) | Crown Spread (m) |       |      |      |        | First Significant Branch (m) | Crown Clearance (m) | Life Stage   | Physiological Condition | Structural Condition | Comments   | BS5837 Category | RPA Radius (m) |
|-------------|---------------------|---------------------|------------|------------------|-------|------|------|--------|------------------------------|---------------------|--------------|-------------------------|----------------------|--|-----------------|----------------|
|             |                     |                     |            | N                | E     | S    | W    | Radial |                              |                     |              |                         |                      |  |                 |                |
| 32          | Ash                 | 270                 | 15         | 3                | 4.75  | 4    | 3.5  |        | 4                            | 2                   | Semi Mature  | Below Average           | Poor                 | Weaker component of collection<br>Cavity with anticipated column of decay from ground level to c.5m<br>Large dead limb to south at c.5.25m<br>Low arboricultural quality   | C12             | 3.3            |
| 33          | English Oak         | 335                 | 13         | 3.25             | 2.75  | 2.75 | 8.5  |        | 1.75                         | 2.5                 | Early Mature | Average                 | Indifferent          | Component of internal field boundary collection<br>Mutually suppressed and cohesive forming one single canopy<br>Reliant on companion shelter<br>Compacted RPA due to heavy cattle usage<br>Individually of low significance, conferred moderate value as component of wider collective only   | B2              | 3.9            |
| 34          | English Oak         | 530                 | 15         | 4                | 2     | 5.25 | 9.5  |        | 2.5                          | 2.25                | Early Mature | Average                 | Indifferent          | Average internal deadwood of large diameter in lower crown<br>Dominant component of internal field boundary collection<br>Mutually suppressed and cohesive forming one single canopy<br>Reliant on companion shelter<br>Compacted RPA due to heavy cattle usage<br>High value as component of wider collection forming sites principal arboricultural feature  | A2              | 6.3            |
| 35          | English Oak         | 330                 | 16.5       | 3                | 3.5   | 3.25 | 4.75 |        | 5                            | 2.25                | Early Mature | Below Average           | Indifferent          | Upper crown appears slightly sparse<br>Above average internal deadwood<br>Failed sub dominant stem to southern aspect at c.0.5m, active decay pocket within wounding<br>Component of internal field boundary collection<br>Mutually suppressed and cohesive forming one single canopy<br>Reliant on companion shelter<br>Compacted RPA due to heavy cattle usage<br>Individually of low significance, conferred moderate value as component of wider collective only | B2              | 3.9            |
| 36          | English Oak         | 890                 | 15         | 7.75             | 11.25 | 9.25 | 1.25 |        | 3.25                         | 2                   | Mature       | Average                 | Indifferent          | Above average epicormic growth<br>Unbalanced scaffold structure and crown<br>Dominant component of internal field boundary collection<br>Mutually suppressed and cohesive forming one single canopy<br>Reliant on companion shelter<br>Compacted RPA due to heavy cattle usage<br>High value as component of wider collection forming sites principal arboricultural feature   | A2              | 10.8           |
| 37          | English Oak         | 590                 | 16.5       | 5.75             | 2     | 8.5  | 10.5 |        | 2.5                          | 2.25                | Early Mature | Average                 | Indifferent          | Component of internal field boundary collection<br>Mutually suppressed and cohesive forming one single canopy<br>Reliant on companion shelter<br>Compacted RPA due to heavy cattle usage<br>Individually of low significance, conferred moderate value as component of wider collective only<br>Moderate example of species  | B12             | 7.2            |
| 38          | English Oak         | 300                 | 4          | 1.75             | 10.75 | 4    | 1.5  |        | 2                            | 1.75                | Semi Mature  | Average                 | Indifferent          | Suppressed specimen, stem kinks horizontal to east at c.2m<br>Decay in bole<br>Unremarkable example of species   | C12             | 3.6            |

| Tree Number | Common Species Name | Trunk Diameter (mm)                                  | Height (m) | Crown Spread (m) |      |       |      |        | First Significant Branch (m) | Crown Clearance (m) | Life Stage   | Physiological Condition | Structural Condition | Comments   | BS5837 Category | RPA Radius (m) |
|-------------|---------------------|--|------------|------------------|------|-------|------|--------|------------------------------|---------------------|--------------|-------------------------|----------------------|--|-----------------|----------------|
|             |                     |  |            | N                | E    | S     | W    | Radial |                              |                     |              |                         |                      |  |                 |                |
| 39          | Field Maple         | 220<br>230<br>190<br>130<br>255<br>220<br>130<br>175 | 11         | 4                | 4.25 | 4.25  | 5    |        | 1.75                         | 2                   | Early Mature | Average                 | Indifferent          | Partially clad and obscured by Ivy<br>Component of internal field boundary collection<br>Mutually suppressed and cohesive forming one single canopy<br>Reliant on companion shelter<br>Compacted RPA due to heavy cattle usage<br>Individually of low significance, conferred moderate value as component of wider collective only   | B2              | 6.6            |
| 40          | English Oak         | 690<br>340   | 12.5       | 6.75             | 12.5 | 6.25  | 11.5 |        | 1.75                         | 2                   | Early Mature | Average                 | Indifferent          | Component of internal field boundary collection<br>Mutually suppressed and cohesive forming one single canopy<br>Reliant on companion shelter<br>Compacted RPA due to heavy cattle usage<br>Individually of low significance, conferred moderate value as component of wider collective only<br>Moderate example of species  | B12             | 9.3            |
| 41          | English Oak         | 620<br>660<br>470                                    | 15.5       | 6.75             | 10.5 | 9.25  | 9.75 |        | 4                            | 1.75                | Mature       | Average                 | Indifferent          | Multi stemmed from ground level<br>Cavities within bole<br>Component of internal field boundary collection<br>Mutually suppressed and cohesive forming one single canopy<br>Reliant on companion shelter<br>Compacted RPA due to heavy cattle usage<br>Individually of low significance, conferred moderate value as component of wider collective only  | B2              | 12.3           |
| 42          | English Oak         | 520  | 13.5       | 5.75             | 7    | 5.5   | 8    |        | 3                            | 1.75                | Early Mature | Average                 | Indifferent          | Component of internal field boundary collection<br>Mutually suppressed and cohesive forming one single canopy<br>Reliant on companion shelter<br>Compacted RPA due to heavy cattle usage<br>Individually of low significance, conferred moderate value as component of wider collective only<br>Moderate example of species<br>Prominent within moderate distance views                              | B12             | 6.3            |
| 43          | English Oak         | 720<br>390   | 12.5       | 9.25             | 10   | 10.25 | 8.25 |        | 1.75                         | 1.75                | Mature       | Average                 | Indifferent          | Average internal deadwood of large diameter in lower crown<br>Upper crown appears slightly sparse<br>Dominant component of internal field boundary collection<br>Mutually suppressed and cohesive forming one single canopy<br>Reliant on companion shelter<br>Compacted RPA due to heavy cattle usage<br>High value as component of wider collection forming sites principal arboricultural feature | A2              | 9.9            |
| 44          | English Oak         | 330<br>185   | 8.5        | 2.5              | 3.5  | 2.75  | 6.25 |        | 2.25                         | 3.25                | Early Mature | Dead                    | Hazardous            | Standing Deadwood  | U               | N/A            |
| 45          | Ash                 | 305<br>295<br>320                                    | 9.5        | 4.25             | 3.5  | 5.5   | 4    |        | 3.5                          |                     | Early Mature | Dead                    | Hazardous            | Standing Deadwood  | U               | N/A            |

| Tree Number | Common Species Name | Trunk Diameter (mm)                                 | Height (m) | Crown Spread (m) |      |      |      |        | First Significant Branch (m) | Crown Clearance (m) | Life Stage   | Physiological Condition | Structural Condition | Comments   | BS5837 Category | RPA Radius (m) |
|-------------|---------------------|---|------------|------------------|------|------|------|--------|------------------------------|---------------------|--------------|-------------------------|----------------------|--|-----------------|----------------|
|             |                     |   |            | N                | E    | S    | W    | Radial |                              |                     |              |                         |                      |  |                 |                |
| 46          | English Oak         | 850<br>850<br>580<br>330                            | 19         | 8.5              | 12   | 10   | 10   |        | 2.5                          | 1.75                | Mature       | Average                 | Indifferent          | Multi stemmed from c.1.25m, unions appear sound<br>Average internal deadwood of large diameter in lower crown<br>Upper crown appears slightly sparse<br>Dominant component of internal field boundary collection<br>Mutually suppressed and cohesive forming one single canopy<br>Reliant on companion shelter<br>Compacted RPA due to heavy cattle usage<br>Good example of the species | A12             | 15             |
| 47          | Field Maple         | 200<br>190<br>190<br>70<br>250<br>150<br>120<br>180 | 10         | 4.25             | 4.5  | 4    | 4.5  |        | 1.74                         | 1.75                | Early Mature | Average                 | Indifferent          | Multi stemmed from ground level<br>Unremarkable example of species   | C12             | 6              |
| 48          | Horse Chestnut      | 500   | 13         | 6.5#             | 4.5  | 5.5# | 7.25 |        | 2.5                          | 1.75                | Early Mature | Below Average           | Indifferent          | Dominant component of G5<br>Maintains a single leader for majority of the height<br>Sparse Canopy  | C12             | 6              |
| 49          | London Plane        | 770   | 17         | 6                | 6    | 10#  | 5    |        | 4.25                         | 4.5                 | Mature       | Average                 | Indifferent          | Unbalanced scaffold structure and crown<br>Leans to the south from ground level<br>Dominant component of G6  | A2              | 9.3*           |
| 50          | Lime                | 200   | 13.5       | 3.5              | 3.75 | 4.5  | 3.25 |        | 3.5                          | 2.5                 | Semi Mature  | Below Average           | Hazardous            | Previously failed and fallen to north, phoenix stems from base<br>Hazardous structural condition, unsuitable for retention   | U               | N/A            |
| 51          | London Plane        | 815   | 17         | 7#               | 7.75 | 10#  | 6    |        | 4.25                         |                     | Mature       | Average                 | Indifferent          | Unbalanced scaffold structure and crown<br>Dominant component of G6  | A2              | 9.9*           |
| 52          | Lime                |   |            |                  |      |      |      |        |                              |                     |              |                         |                      | Previously Standing Deadwood - Removed as of September 2024  |                 |                |
| 53          | Lime                |   |            |                  |      |      |      |        |                              |                     |              |                         |                      | Previously Standing Deadwood - Removed as of September 2024  |                 |                |
| 54          | Corsican Pine       |   |            |                  |      |      |      |        |                              |                     |              |                         |                      | Previously Standing Deadwood - Removed as of September 2024  |                 |                |
| 55          | London Plane        | 810   | 18         | 7.5              | 8.25 | 10#  | 5    |        | 3                            | 1.75                | Mature       | Average                 | Indifferent          | Unbalanced scaffold structure and crown<br>Dominant component of G6  | A2              | 9.6*           |
| 56          | Lime                | 335<br>2* 200<br>3* 100<br>6* 85                    | 7          | 5.5              | 7    | 4    | 6    |        | 1.5                          | 0.5                 | Early Mature | Below Average           | Hazardous            | Central leader has failed, <i>Ganoderma</i> sp. brackets on bole<br>Basal epicormic growth forms canopy<br>In a state of terminal decline, unlikely to offer a long-term future contribution   | U               | N/A            |
| 57          | Ash                 | 470   | 14         | 9.5              | 7.5  | 0    | 5    |        | 2                            | 2.25                | Early Mature | Average                 | Indifferent          | Upper crown appears sparse<br>Above average epicormic growth<br>Unbalanced scaffold structure and crown<br>Unremarkable example of species<br>Leans to north from ground level   | C1              | 5.4            |
| 58          | Horse Chestnut      | 335   | 9.5        | 4.75             | 3.25 | 2    | 3    |        | 2.5                          | 2.5                 | Early Mature | Dead                    | Hazardous            | Standing deadwood  | U               | N/A            |

| Tree Number | Common Species Name | Trunk Diameter (mm) | Height (m) | Crown Spread (m) |      |      |      |        | First Significant Branch (m) | Crown Clearance (m) | Life Stage   | Physiological Condition | Structural Condition | Comments   | BS5837 Category | RPA Radius (m) |
|-------------|---------------------|---------------------|------------|------------------|------|------|------|--------|------------------------------|---------------------|--------------|-------------------------|----------------------|--|-----------------|----------------|
|             |                     |                     |            | N                | E    | S    | W    | Radial |                              |                     |              |                         |                      |  |                 |                |
| 59          | Norway Spruce       | 400#                | 14         | 6#               | 4#   | 6#   | 6#   |        | 4.5#                         | 3.5                 | Early Mature | Average                 | Indifferent          | Offsite and inaccessible, situated within party land<br>Prominent within moderate distance views   | B2              | 4.8            |
| 60          | Beech               | 230#                | 7.5        | 4#               | 2#   | 4.5# | 2#   |        | 3#                           | 3#                  | Semi Mature  | Average                 | Indifferent          | Inaccessible, offsite within neighbouring residential land, unable to thoroughly inspect<br>Readily replaceable at current size, low arboricultural value  | C12             | 2.7            |
| 61          | Beech               | 350                 | 12.5       | 5.5              | 2    | 5.5  | 5.5  |        | 1.5                          | 2                   | Early Mature | Average                 | Indifferent          | Inaccessible, offsite within neighbouring residential land, unable to thoroughly inspect<br>Unremarkable example of species  | C1              | 4.2            |
| 62          | Beech               | 475#                | 9          |                  |      |      |      | 5#     | 4                            | 2.5                 | Early Mature | Average                 | Indifferent          | Inaccessible, offsite within neighbouring residential land, unable to thoroughly inspect<br>Signs of past management from previous reduction works<br>Reduced future potential<br><i>Ganoderma</i> sp. bracket at base | C1              | 5.7            |
| 63          | Ash                 | 480<br>180          | 11.5       | 8.5              | 6.5  | 7.5  | 7    |        | 2.5                          | 1.5                 | Early Mature | Average                 | Indifferent          | Clad and obscured by Ivy, unable to thoroughly inspect<br>Moderate example of species<br>Prominent within moderate distance views  | C12             | 6              |
| 64          | English Oak         | 380                 | 8.5        | 5.5              | 4    | 4.5  | 7    |        | 2.5                          | 2                   | Early Mature | Average                 | Indifferent          | Unbalanced scaffold structure and crown<br>Unremarkable example of species   | C1              | 4.2            |
| 65          | English Oak         | 280                 | 14         | 1                | 2.5# | 5#   | 4    |        | 3.5                          | 5.5                 | Semi Mature  | Average                 | Indifferent          | Unbalanced scaffold structure and crown<br>Unremarkable example of species   | C1              | 3              |
| 66          | Sycamore            | 460                 | 13.5       | 4.5#             | 5#   | 5#   | 6.75 |        | 2.75                         | 2.5                 | Early Mature | Average                 | Indifferent          | Situated within site's boundary<br>Moderate example of species   | B1              | 5.4            |
| 67          | Horse Chestnut      | 460                 | 10         | 5                | 5    | 6.5  | 5.25 |        | 2.75                         | 1.75                | Early Mature | Average                 | Indifferent          | Standalone Specimen<br>Average internal deadwood<br>Moderate example of species  | B1              | 5.4            |
| 68          | Lime                | 650#                | 20         |                  |      |      |      | 6      | 3                            | 3                   | Early Mature | Average                 | Indifferent          | Inaccessible, offsite within neighbouring residential land, unable to thoroughly inspect<br>Prominent within views from adjacent highway   | A2              | 7.8            |
| 69          | Lime                | 550#                | 14.5       |                  |      |      |      | 4.5    | 4                            | 2.5                 | Early Mature | Average                 | Indifferent          | Inaccessible, offsite within neighbouring residential land, unable to thoroughly inspect<br>Unbalanced scaffold structure and crown<br>Prominent within moderate distance views  | B2              | 6.6            |
| 70          | Lime                | 470#                | 16         |                  |      |      |      | 4.5    | 6                            | 3                   | Early Mature | Average                 | Indifferent          | Inaccessible, offsite within neighbouring residential land, unable to thoroughly inspect<br>Prominent within moderate distance views   | B2              | 5.7            |

| Tree Number | Common Species Name | Trunk Diameter (mm) | Height (m) | Crown Spread (m) |      |      |      |        | First Significant Branch (m) | Crown Clearance (m) | Life Stage   | Physiological Condition | Structural Condition | Comments  | BS5837 Category | RPA Radius (m) |
|-------------|---------------------|---------------------|------------|------------------|------|------|------|--------|------------------------------|---------------------|--------------|-------------------------|----------------------|---|-----------------|----------------|
|             |                     |                     |            | N                | E    | S    | W    | Radial |                              |                     |              |                         |                      |   |                 |                |
| 71          | English Oak         | 545#                | 18         | 2.25             | 7#   | 11   | 4.5  |        | 2.25                         | 2.5                 | Early Mature | Average                 | Indifferent          | Unbalanced scaffold structure and crown<br>Prominent within moderate distance views   | B2              | 6.6*           |
| 72          | English Oak         | 605#                | 17         | 5#               | 4.75 | 6#   | 6.25 |        | 4.5                          | 2.5                 | Early Mature | Average                 | Indifferent          | Clad and obscured by Ivy, unable to thoroughly inspect<br>Moderate example of species<br>Prominent within moderate distance views | B12             | 7.2*           |
| 73          | Lime                | 480#                | 14         | 4.25             | 4.5# | 4.5# | 4.75 |        | 2                            | 0.5                 | Early Mature | Below Average           | Indifferent          | Vigorous basal epicormic growth<br>Displaying signs of decline, reduced future potential  | C1              | 5.7            |
| 74          | Lime                | 490#                | 13         | 4.5              | 4.5  | 5#   | 5.25 |        | 4.75                         | 1                   | Early Mature | Below Average           | Indifferent          | Vigorous basal epicormic growth<br>Displaying signs of decline, reduced future potential  | C1              | 6              |
| 75          | Lime                | 475                 | 8          | 5                | 5    | 3.5# | 4.25 |        | 3.25                         | 1                   | Early Mature | Below Average           | Hazardous            | Kretschmaria deusta at base<br>Hazardous structural condition, unsuitable for retention   | U               | N/A            |
| 76          | Lime                | 460                 | 15         |                  |      |      |      | 4.5    | 4.25                         | 4.5                 | Early Mature | Below Average           | Hazardous            | Ganoderma sp. bracket at base<br>Hazardous structural condition, unsuitable for retention   | U               | N/A            |
| 77          | Goat Willow         |                     |            |                  |      |      |      |        |                              |                     |              |                         |                      | Removed as of September 2024  |                 |                |
| 78          | Lime                | 370                 | 10.5       | 3.5              | 3.25 | 2.25 | 2.5  |        | 3.25                         | 2                   | Early Mature | Below Average           | Hazardous            | Ganoderma sp. bracket at base<br>In a state of terminal decline, unlikely to offer a long-term future contribution                | U               | N/A            |
| 79          | Lime                | 350#                | 11.5       | 3.25             | 3.75 | 3.75 | 3    |        | 1.75                         | 4.5                 | Early Mature | Below Average           | Hazardous            | In a state of terminal decline, unlikely to offer a long-term future contribution   | U               | N/A            |
| 80          | Field Maple         | 340#                | 8          | 4.5              | 2.75 | 2    | 2.25 |        | 1                            | 1.25                | Early Mature | Average                 | Indifferent          | Unremarkable example of species   | C12             | 4.2            |
| 81          | Lime                | 350                 | 11.5       | 4                | 3.5  | 3.75 | 3.75 |        | 4                            | 1.5                 | Early Mature | Below Average           | Indifferent          | Vigorous basal epicormic growth<br>Displaying signs of decline, reduced future potential  | C1              | 4.2            |
| 82          | Ash                 | 220                 | 8          | 2.25             | 2.75 | 4    | 3.5  |        | 3                            | 3.75                | Semi Mature  | Dead                    | Hazardous            | Standing deadwood   | U               | N/A            |
| 83          | Lime                | 475                 | 14         | 3                | 3.5  | 3.5  | 3    |        | 4.35                         | 2.5                 | Early Mature | Below Average           | Indifferent          | Vigorous basal epicormic growth<br>Displaying signs of decline, reduced future potential  | C1              | 5.7*           |
| 84          | Lime                | 350                 | 9          | 3                | 2.75 | 1.5  | 1    |        | 3.5                          | 3                   | Early Mature | Dead                    | Hazardous            | Standing deadwood   | U               | N/A            |
| 85          | Lime                | 380                 | 15         | 3.25             | 3.5  | 2.75 | 3    |        | 4.25                         | 1.25                | Early Mature | Below Average           | Indifferent          | Vigorous basal epicormic growth<br>Displaying signs of decline, reduced future potential  | C1              | 4.5*           |
| 86          | English Oak         | 275                 | 10         | 2.5              | 6    | 5.5  | 2.5  |        | 3.25                         | 1.5                 | Semi Mature  | Average                 | Indifferent          | Unbalanced scaffold structure and crown<br>Unremarkable example of species  | C1              | 3.3            |

| Tree Number | Common Species Name  | Trunk Diameter (mm)      | Height (m) | Crown Spread (m) |       |       |      |               | First Significant Branch (m) | Crown Clearance (m) | Life Stage                     | Physiological Condition     | Structural Condition        | Comments   | BS5837 Category | RPA Radius (m) |
|-------------|--|--------------------------|------------|------------------|-------|-------|------|---------------|------------------------------|---------------------|--------------------------------|-----------------------------|-----------------------------|--|-----------------|----------------|
|             |  |                          |            | N                | E     | S     | W    | Radial        |                              |                     |                                |                             |                             |  |                 |                |
| 87          | English Oak  | 725                      | 16.5       | 9.75             | 8.75  | 8.75  | 8.5  |               | 2.25                         | 2                   | Mature                         | Average                     | Indifferent                 | Well balanced radial crown and scaffold structure<br>Structure typical for the species within current context<br>Conferred high value as prominent pair  | A2              | 8.7            |
| 88          | English Oak  | 720                      | 14         | 9.25             | 11.25 | 10.25 | 9.25 |               | 2.5                          | 2                   | Mature                         | Average                     | Indifferent                 | Well balanced radial crown and scaffold structure<br>Structure typical for the species within current context<br>Conferred high value as prominent pair  | A2              | 8.7            |
| 89          | Field Maple  | 250#                     | 4          | 5                | 2     | 0     | 2    |               | n/a                          | 1.75                | Early Mature                   | Below Average               | Hazardous                   | Collapsed to north, canopy formed of phoenix growth<br>Majority of structure swamped by bramble  | U               | n/a            |
| 90          | Blackthorn   | 120<br>90                | 4          |                  |       |       |      | 3.5           | 1.75                         | 1.5                 | Early Mature                   | Average                     | Indifferent                 | Twin stemmed from c.0.25m<br>Suppressed to west by established tree group  | C12             | 1.8            |
| 91          | Lime   | 390<br>190               | 6          | 3                | 9     | 2     | 0    |               | n/a                          | 1.5                 | Early Mature                   | Below Average               | Hazardous                   | Windthrow, fallen to east; hung up within T50  | U               | n/a            |
| G1          | Elm<br>Hawthorn  | 270 max                  | 9 max      |                  |       |       |      | 3.75 max      | 0.5 to 4.5                   | 0.5 to 3.5          | Semi Mature to<br>Early Mature | Below Average               | Poor to Indifferent         | Cohesive scrub group<br>Majority of components are displaying signs of decline<br>Unremarkable collection  | C12             | 3.3            |
| G2          | English Oak<br>Field Maple<br>Hawthorn   | 750 max                  | 14 av      |                  |       |       |      | 10# max       | 0.5 to 6#                    | 1.25 to 4.5         | Semi Mature to<br>Mature       | Below Average to<br>Average | Poor to Indifferent         | Inaccessible, offsite within adjacent third-party land, unable to thoroughly inspect<br>Structures appear typical for species within current context<br>Cohesive internal field boundary group comprised of English Oak with occasional Field Maple and Hawthorn as understory<br>Individually of moderate quality, high collective value only | A2              | 9              |
| G3          | Ash<br>Apple<br>English Oak<br>Field Maple<br>Hawthorn                             | 245<br>150<br>220<br>max | 9 max      |                  |       |       |      | 8 max<br>3 av | 0.5 to 3                     | 0.5 to 4            | Semi Mature                    | Average                     | Indifferent                 | Provides understorey for T28 to T43<br>Unremarkable collection   | C12             | 4.2            |
| G4          | Blackthorn<br>Field Maple<br>Hawthorn  | 215<br>160<br>max        | 8 max      |                  |       |       |      | 5 max         | 0.5 to 2                     | 0.5 to 2            | Early Mature                   | Average                     | Indifferent                 | Provides understorey for T44 to T47<br>Unremarkable collection   | C12             | 3.3            |
| G5          | Ash<br>Corsican Pine<br>Elm<br>Horse Chestnut<br>Lime<br>Goat Willow<br>Blackthorn | 520 max                  | 16.5 max   |                  |       |       |      | 4.5 av        | 1.5 to 10.5                  | 1.5 to 11#          | Semi Mature to<br>Early Mature | Dead to Below<br>Average    | Hazardous to<br>Indifferent | Collection comprised of individuals in terminal decline and standing<br>deadwood with young scrub colonisation to the north  | U               | N/A            |
| G6          | Ash<br>Field Maple<br>Hawthorn<br>Lime   | 495 max                  | 18.5 max   |                  |       |       |      | 5.5 av        | 1.5 to 8.5                   | 2 to 12             | Semi Mature to<br>Early Mature | Average                     | Indifferent                 | Cohesive collection lining sites boundary<br>Individually of low significance, conferred moderate value as collective  | B2              | 6*             |
| G7          | Blackthorn<br>Hawthorn<br>Spindle  | 4* 85#                   | 6 max      |                  |       |       |      | 2.5 av        | 1 av                         | 1 av                | Semi Mature                    | Average                     | Indifferent                 | Intermittent scrub collection<br>Low arboricultural quality  | C12             | 2.1            |

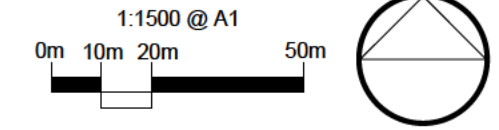
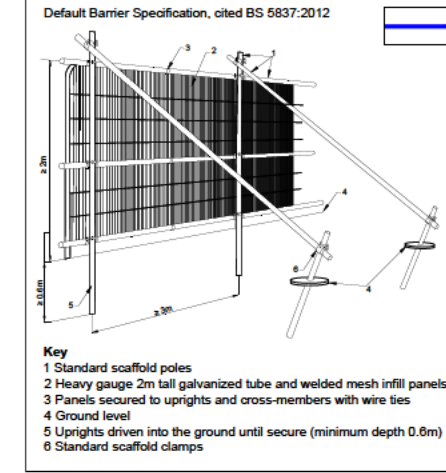
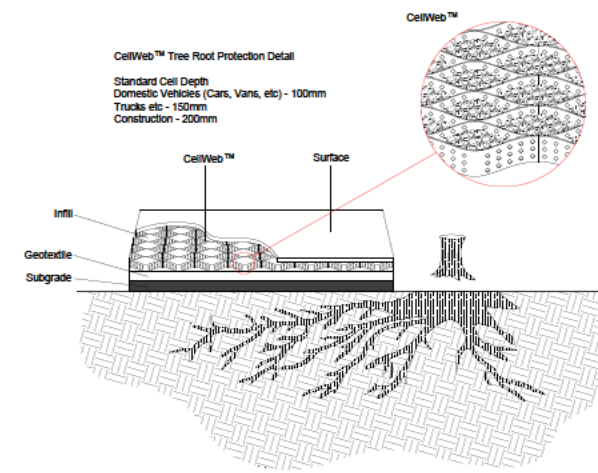
| Tree Number | Common Species Name   | Trunk Diameter (mm) | Height (m) | Crown Spread (m) |   |   |   |          | First Significant Branch (m) | Crown Clearance (m) | Life Stage                  | Physiological Condition | Structural Condition | Comments  | BS5837 Category | RPA Radius (m) |
|-------------|---|---------------------|------------|------------------|---|---|---|----------|------------------------------|---------------------|-----------------------------|-------------------------|----------------------|---|-----------------|----------------|
|             |   |                     |            | N                | E | S | W | Radial   |                              |                     |                             |                         |                      |   |                 |                |
| G8          | Blackthorn<br>Leyland Cypress                                     | 175 av              | 9.5 av     |                  |   |   |   | 3.25 av  | 0.5 to 1.5                   | 0.5 to 1.5          | Semi Mature to Early Mature | Average                 | Indifferent          | Cohesive linear group majoring on Leyland Cypress<br>Unremarkable collection  | C12             | 2.1            |
| G9          | Ash   | 285                 |            |                  |   |   |   |          |                              |                     |                             |                         |                      |   |                 |                |
|             | Apple   | 225                 |            |                  |   |   |   |          |                              |                     |                             |                         |                      |   |                 |                |
|             | Blackthorn  | 180                 |            |                  |   |   |   |          |                              |                     |                             |                         |                      |   |                 |                |
|             | Hawthorn  | 200                 | 7 av       |                  |   |   |   | 6.75 max | 0.5 to 3                     | 0.5 to 3            | Semi Mature to Early Mature | Average                 | Indifferent          | Cohesive scrub collection<br>Low arboricultural quality   | C12             | 5.7            |
|             | Plum  | 100                 |            |                  |   |   |   |          |                              |                     |                             |                         |                      |   |                 |                |
|             |   | 150 max             |            |                  |   |   |   |          |                              |                     |                             |                         |                      |   |                 |                |
| G10         | English Oak<br>Hawthorn<br>Blackthorn                             | 700#                | 16.5 max   |                  |   |   |   | 8.75 max | 2 to 5                       | 2.5 av              | Semi Mature to Early Mature | Average                 | Indifferent          | Inaccessible, offsite within adjacent third-party land, unable to thoroughly inspect<br>Prominent within moderate distance views<br>Considered to be of moderate arboricultural value | B12             | 8.4            |
| G11         | Blackthorn<br>Hawthorn  | 150 max             | 4.5 max    |                  |   |   |   | 5.25 max | 0.5 to 1.5                   | 0.5 to 1.5          | Semi Mature                 | Average                 | Poor                 | Small parcel of colonising scrub<br>Low arboricultural quality  | C12             | 1.8            |
| G12         | Blackthorn<br>Dogwood<br>Hazel                                    | 85 av               | 2.5 av     |                  |   |   |   | 4.5 av   | 0.5 av                       | 0.5 av              | Semi Mature                 | Average                 | Indifferent          | Small parcel of colonising scrub<br>Provides understory for T73 to T77<br>Low arboricultural quality  | C12             | 0.9            |
| G13         | Apple<br>Pear<br>Cherry   | 250#                | 3.5        |                  |   |   |   | 2.5      | 1.5                          | 1.5                 | Early Mature                | Average                 | Indifferent          | Domestic pruned fruit trees within neighbouring garden<br>Canopy oversails c.1m into site   | C12             | 3              |
| H1          | Ash<br>Blackthorn<br>Hawthorn                                     | 85 av               | 4 av       |                  |   |   |   | 1.5 av   | 0.25 av                      | 0.25 av             | Semi Mature                 | Below Average           | Indifferent          | Previously maintained field boundary hedgerow   | C12             | 0.9            |
| H2          | Hawthorn<br>Blackthorn<br>Dogwood                                 | 2* 100 av           | 6.5 av     |                  |   |   |   | 3.5 av   | 0.5 av                       | 0.5 av              | Semi Mature to Early Mature | Average                 | Indifferent          | Unmanaged intermittent field boundary hedgerow<br>Clad and obscured by Bramble  | C12             | 1.8            |
| H3          | Ash<br>Blackthorn<br>Field Maple<br>Hawthorn<br>Hazel<br>Sycamore | 75 av               | 1 av       |                  |   |   |   | 1.5 av   | 0.25 av                      | 0.25 av             | Semi Mature                 | Average                 | Poor                 | Maintained field boundary hedgerow  | C12             | 0.9            |
| H4          | Blackthorn<br>Field Maple<br>Goat Willow<br>Hawthorn              | 75 av               | 2.5 max    |                  |   |   |   | 1 av     | 0.25 av                      | 0.25 av             | Semi Mature                 | Average                 | Indifferent          | Maintained field boundary hedgerow  | C12             | 0.9            |
| H5          | Field Maple<br>Box<br>Elder<br>Laurel<br>Hazel                    | 250 max.            | 4          |                  |   |   |   | 1        | n/a                          | 0.25                | Early Mature                | Average                 | Indifferent          | Maintained domestic hedge<br>Laurel towards southern extent   | C12             | 3              |

**APPENDIX C**

**TREE PROTECTION PLAN (10816 TPP 01 Rev A)**



10816 TPP 01 Rev A (1/2)



- KEY:**
- Site Boundary
  - Tree Numbers
  - Tree Canopies
  - Category 'U' Trees
  - Category 'A' RPA
  - Category 'B' RPA
  - Category 'C' RPA
  - Trees to be Removed
  - Tree Protection Barrier
  - Tree Protection Barrier (2nd Position)
  - Above Soil Surfacing

Note: Trees 1-5, 8, 9, 14, 22, 49, 51, 55, 71, 72, 83, 85, 89-91 have been plotted using measurements onsite in conjunction with aerial imagery. Their locations were not recorded on the topographical survey of the site (drawing ref: 19192-100-RevA.dwg).

Note: The RPA footprint for Trees 1-5, 8, 9, 14, 22, 49, 51, 55, 71, 72, 83, 85 have been displaced to allow for the effect of the adopted highway. The surface area of the RPA has not been reduced.



|           |         |  |       |       |
|-----------|---------|--|-------|-------|
| A         | NOV '25 | Revised to include retention of T45 for ecological benefit. NOTE | JB    | n/a   |
| REV       | DATE    |  | Drawn | Chk'd |
| REVISIONS |         |  |       |       |

aspect arboriculture

TITLE  
Land North of Guildford Road,  
Rudgwick  
Tree Protection Plan

|  |                  |
|--|------------------|
| CLIENT<br>Welbeck Land                         |                  |
| SCALE<br>1:1500 @ A3                           | DATE<br>MAY 2025 |
| DRAWING NUMBER<br>10816 TPP 01 Rev A(Overview) | REVISION<br>JB   |

Based on: WELB190309 SL03-P4



Company: T01794 367703  
Partishead: T01275 407000  
London: T01794 367703  
www.thrivearchitects.co.uk

Rev Description Date Aut Ch  
R1 First Issue 11/01/25 JLB/JPB AB  
R2 Amendments to include Landscaping/Highways comments 18/01/25 JLB/JPB AB  
R3 Widened street between plots 32 and 54 to allow for refuse vehicle 05/01/25 JLB -  
R4 Adjusted buffer planting to existing constraints and re-arranged plots 21/01/25 JLB -

Rev Description Date Aut Ch  
R1 First Issue 11/01/25 JLB/JPB AB  
R2 Amendments to include Landscaping/Highways comments 18/01/25 JLB/JPB AB  
R3 Widened street between plots 32 and 54 to allow for refuse vehicle 05/01/25 JLB -  
R4 Adjusted buffer planting to existing constraints and re-arranged plots 21/01/25 JLB -

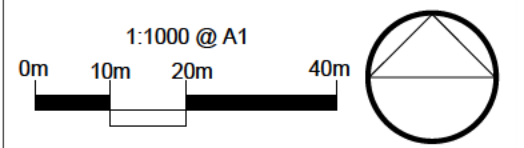
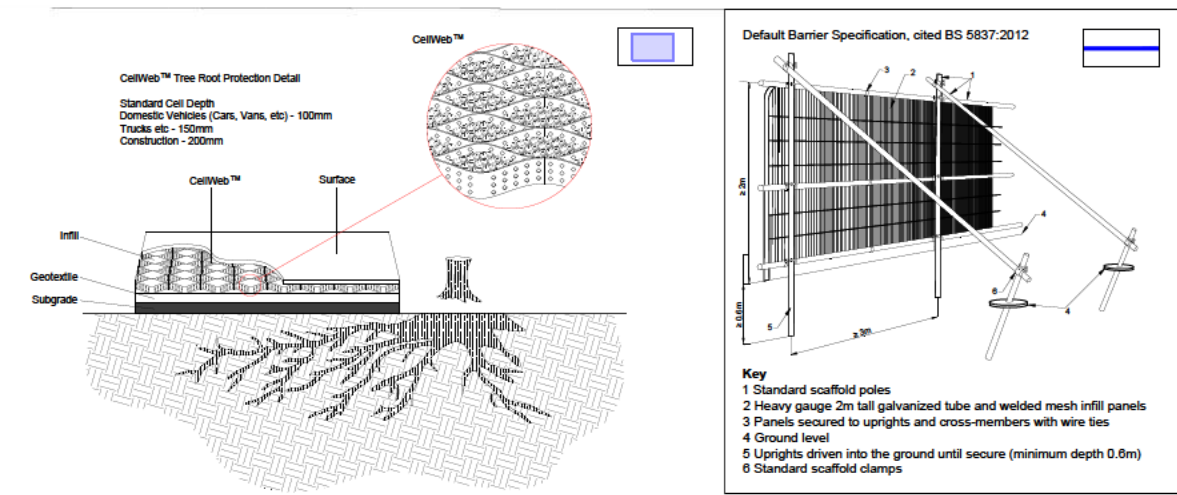
Date Aut Ch

Project: Land at Rudgwick  
Drawing: Site Layout-03

Client: WELBECK LAND  
Drawing: WELB190309  
Drawing: SL03

Date: 23.01.25  
Rev: P4





- KEY:
- Site Boundary
  - Tree Numbers
  - Tree Canopies
  - Category 'U' Trees
  - Category 'A' RPA
  - Category 'B' RPA
  - Category 'C' RPA
  - Trees to be Removed
  - Tree Protection Barrier
  - Tree Protection Barrier (2nd Position)
  - Above Soil Surfacing

Note: Trees 1-5, 8, 9, 14, 22, 49, 51, 55, 71, 72, 83, 85, 89-91 have been plotted using measurements onsite in conjunction with aerial imagery. Their locations were not recorded on the topographical survey of the site (drawing ref: 19192-100-RevA.dwg).

Note: The RPA footprint for Trees 1-5, 8, 9, 14, 22, 49, 51, 55, 71, 72, 83, 85 have been displaced to allow for the effect of the adopted highway. The surface area of the RPA has not been reduced.



|           |         |   |       |       |
|-----------|---------|---|-------|-------|
| A         | NOV '25 | Revised to include retention of T45 for ecological benefit. | JB    | n/a   |
| REV       | DATE    | NOTE  | Drawn | Chk'd |
| REVISIONS |         |   |       |       |

**aspect arboriculture**

TITLE  
Land North of Guildford Road, Rudgwick  
Tree Protection Plan

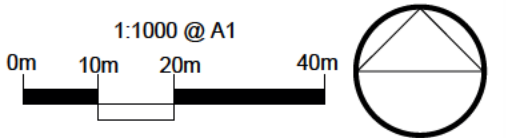
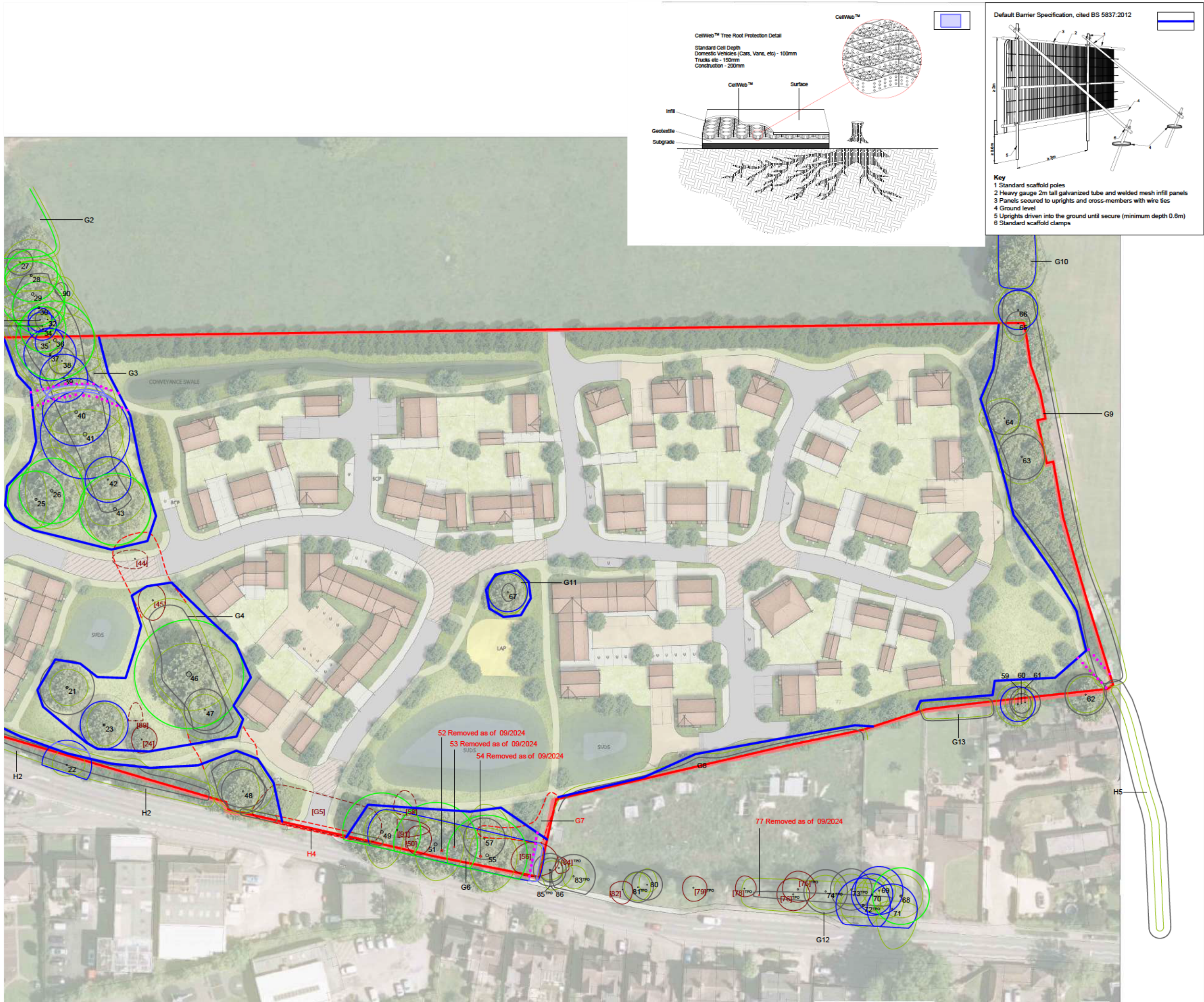
CLIENT  
Welbeck Land

|   |                  |             |
|---|------------------|-------------|
| SCALE<br>1:1000 @ A3                      | DATE<br>MAY 2025 | DRAWN<br>JB |
| DRAWING NUMBER<br>10816 TPP 01 Rev A(1/2) |                  | REVISION    |

Based on: WELB190309 SL03-P4







- KEY:**
- Site Boundary
  - Tree Numbers
  - Tree Canopies
  - Category 'U' Trees
  - Category 'A' RPA
  - Category 'B' RPA
  - Category 'C' RPA
  - Trees to be Removed
  - Tree Protection Barrier
  - Tree Protection Barrier (2nd Position)
  - Above Soil Surfacing

Note: Trees 1-5, 8, 9, 14, 22, 49, 51, 55, 71, 72, 83, 85, 89-91 have been plotted using measurements onsite in conjunction with aerial imagery. Their locations were not recorded on the topographical survey of the site (drawing ref: 19192-100-RevA.dwg).

Note: The RPA footprint for Trees 1-5, 8, 9, 14, 22, 49, 51, 55, 71, 72, 83, 85 have been displaced to allow for the effect of the adopted highway. The surface area of the RPA has not been reduced.



|           |         |   |       |       |
|-----------|---------|---|-------|-------|
| A         | NOV '25 | Revised to include retention of T45 for ecological benefit. | JB    | n/a   |
| REV       | DATE    | NOTE  | Drawn | Chk'd |
| REVISIONS |         |   |       |       |

**aspect** arboriculture

TITLE  
Land North of Guildford Road,  
Rudgwick  
Tree Protection Plan

|                         |              |       |  |  |
|-------------------------|--------------|-------|--|--|
| CLIENT                  | Welbeck Land |       |  |  |
| SCALE                   | DATE         | DRAWN |  |  |
| 1:1000 @ A3             | MAY 2025     | JB    |  |  |
| DRAWING NUMBER          | REVISION     |       |  |  |
| 10816 TPP 01 Rev A(2/2) |              |       |  |  |

Based on: WELB190309 SL03-P4



## APPENDIX D

### TREE SURVEY METHODOLOGY

## Tree Survey Methodology

The tree survey is a form of Visual Tree Assessment, undertaken in November 2021 and updated during October 2024. Tree locations are identified via a topographical survey; locations of any trees excluded from the topographical survey were plotted on site. The purpose of the survey is to record information about trees on or adjacent to the site to inform design options. In keeping with clause 4.4 of BS5837: 2012 'Trees in Relation to Design, Construction and Demolition', the survey provides a record of the following parameters:

**Tree Numbers:** all individual trees are sequentially numbered. Groups of trees, woodlands and hedgerow are also sequentially numbered with a corresponding prefix relevant to their type e.g. G, W or H respectively; the identification of trees as woodland, groups of trees or within hedgerows is undertaken where appropriate. The identification of trees as individuals within collections has been made where it is considered sensible to make such a differentiation.

**Species:** listed by common name

**Stem Diameter:** given in millimetres and obtained by measuring single/multiple stems at 1.5m using a diameter tape in accordance with Annex C within BS5837:2012. Diameters of inaccessible trunks are estimated and provided with the suffix '#'.

**Tree Heights:** determined using a clinometer and measured to the nearest 500mm. Heights are estimated where specific triangulation is not achievable and by reference to measured trees nearby (provided with the suffix '#').

**Crown Spreads:** measured at cardinal points using a Leica Disto™ laser distance measurer. Measurements were recorded to the nearest 250mm. Inaccessible crown spreads are estimated based on measured canopies nearby and provided with the suffix '#'

**Crown Clearance:** The height of the first significant living branch and/or canopy (as appropriate) is recorded using a Leica Disto™ laser distance measurer to inform vertical ground clearance. Crown clearance may be higher or lower than the first significant branch. Estimated clearances are provided with the suffix '#'. Height of first significant branch will be provided where considered advantageous to make the distinction.

**Life Stage** – The age of trees, groups of trees, hedges and woodlands are defined as follows:

- Young - A tree that has been recently planted or established and is still in the early stages of growth.
- Semi-mature - A tree that has passed the early establishment phase but has not yet reached its full size.
- Early Mature - A tree that has reached a stage where it is structurally developed and possesses a near full size crown.
- Mature - A fully developed tree that has reached or is near its maximum size and is functioning at full capacity.
- Notable - a significant tree because of its age or size but does not yet possess sufficient features to be considered veteran.
- Veteran - old and large for the species and possess aged features associated with senescence.
- Ancient - a tree of significant age and size by comparison to others of the same species. All ancient trees are veteran trees, although very few trees of any species reach ancient life-stage.

**Physiological and structural condition:** physiological condition defined as follows; good, above average, average, below average, poor or dead. Structural condition is defined as: good, moderate, indifferent, poor or hazardous

**Comments:** further observations were recorded where necessary i.e. details regarding defects, preliminary management recommendations, presence of pest/disease and perceived significance.

**BS5837 Category:** pursuant to BS5837:2012 section 4.5 and cascade chart for tree quality assessment (refer to reproduced Table 1 overleaf). Trees qualifying under a given category (A-C and U) and any appropriate subheading (1-3) are considered to fall within the scope of that category's definition.

Table 1 Cascade chart for tree quality assessment

| Category and definition   | Criteria (including subcategories where appropriate)   |   |   |
|---|--|---|---|
| <b>Trees unsuitable for retention</b> (see Note)  |  |   |   |
| <b>Category U</b><br>Those in such a condition that they cannot realistically be retained as living trees in the context of the current land use for longer than 10 years | <ul style="list-style-type: none"><li>Trees that have a serious, irremediable, structural defect, such that their early loss is expected due to collapse, including those that will become unviable after removal of other category U trees (e.g. where, for whatever reason, the loss of companion shelter cannot be mitigated by pruning)</li><li>Trees that are dead or are showing signs of significant, immediate, and irreversible overall decline</li><li>Trees infected with pathogens of significance to the health and/or safety of other trees nearby, or very low quality trees suppressing adjacent trees of better quality</li></ul> <p><i>NOTE Category U trees can have existing or potential conservation value which it might be desirable to preserve; see 4.5.7.</i></p> |   |   |
|   | <b>1 Mainly arboricultural qualities</b>   | <b>2 Mainly landscape qualities</b>   | <b>3 Mainly cultural values, including conservation</b>   |
| <b>Trees to be considered for retention</b>   |  |   |   |
| <b>Category A</b><br><b>Trees of high quality</b> with an estimated remaining life expectancy of at least 40 years  | Trees that are particularly good examples of their species, especially if rare or unusual; or those that are essential components of groups or formal or semi-formal arboricultural features (e.g. the dominant and/or principal trees within an avenue)   | Trees, groups or woodlands of particular visual importance as arboricultural and/or landscape features  | Trees, groups or woodlands of significant conservation, historical, commemorative or other value (e.g. veteran trees or wood-pasture) |
| <b>Category B</b><br><b>Trees of moderate quality</b> with an estimated remaining life expectancy of at least 20 years  | Trees that might be included in category A, but are downgraded because of impaired condition (e.g. presence of significant though remediable defects, including unsympathetic past management and storm damage), such that they are unlikely to be suitable for retention for beyond 40 years; or trees lacking the special quality necessary to merit the category A designation  | Trees present in numbers, usually growing as groups or woodlands, such that they attract a higher collective rating than they might as individuals; or trees occurring as collectives but situated so as to make little visual contribution to the wider locality | Trees with material conservation or other cultural value  |
| <b>Category C</b><br><b>Trees of low quality</b> with an estimated remaining life expectancy of at least 10 years, or young trees with a stem diameter below 150 mm       | Unremarkable trees of very limited merit or such impaired condition that they do not qualify in higher categories  | Trees present in groups or woodlands, but without this conferring on them significantly greater collective landscape value; and/or trees offering low or only temporary/transient landscape benefits  | Trees with no material conservation or other cultural value   |



landscape planning • ecology • arboriculture

aspect

Aspect Arboriculture  
West Court  
Hardwick Business Park  
Noral Way  
Banbury  
Oxfordshire OX16 2AF

T: 01295 276066  
F: 01295 265072  
E: [info@aspect-arbor.com](mailto:info@aspect-arbor.com)  
W: [www.aspect-arbor.com](http://www.aspect-arbor.com)