

NOTES:

All dimensions to be checked on site.
This drawing is to be used in conjunction with all relevant Architectural, Interior, Structural, M&E, Drainage, Public Health, Landscape and Civils drawings and specifications. It is not to be used in isolation. Any discrepancies are to be reported to the Architect before any work commences. The Contractor's attention is drawn to the Health & Safety Plan and the fact that the drawing is a preliminary drawing and being potentially hazardous. These items should not be considered as a final and final item.

The Ayre Chamberlain Gaunt's normal Health & Safety operations both on and off site.

Ayre Chamberlain Gaunt take no responsibility for the location of legal boundaries indicated on this drawing and advise a separate drawing to be completed by specialist surveyors. DWG files provided for information only. Refer to PDF record.

The copyright of this drawing is held by Ayre Chamberlain Gaunt. It is not to be used for any purpose without consent.

Material Key Bay Elevations

- 01 Slate roof tile
- 02 Masonry Brick 02 (Light Red)
- 03 Solid to SE + SW elevations (Bronze)
- 04 Aluminium window (Bronze)
- 05 Aluminium panel (Bronze)
- 06 Solder/Solder & header course feature detail
- 07 Masonry Brick 01 (Light Red)
- 08 Solid to NW elevation (Bronze)
- 09 Saw Py / Header
- 10 Aluminium wall panel - solid (Bronze)
- 11 Aluminium railing (Bronze)
- 12 Aluminium doors (Bronze)
- 13 Aluminium balcony panel - solid (Bronze)
- 14 Masonry Brick 04 (Light grey)
- 15 Masonry Brick 03 (Grey)
- 16 Concrete base/footing detail
- 17 Porcelain brick course feature detail
- 18 Masonry balcony wall (Buff/gray)
- 19 Aluminium (Ivory) (Bronze)
- 20 Existing Masonry brick (Red)
- 21

ACGARCHITECTS.CO.UK

Ayre Chamberlain Gaunt
Belvedere House
Basing View
Basingstoke
Hampshire, RG21 4HG
+44 (0)20 3909 5750
ma@acgarchitects.co.uk

AYRE
CHAMBERLAIN
GAUNT

PROJECT

Former Novartis Site
Parsonage Road, Horsham

DRAWING TITLE

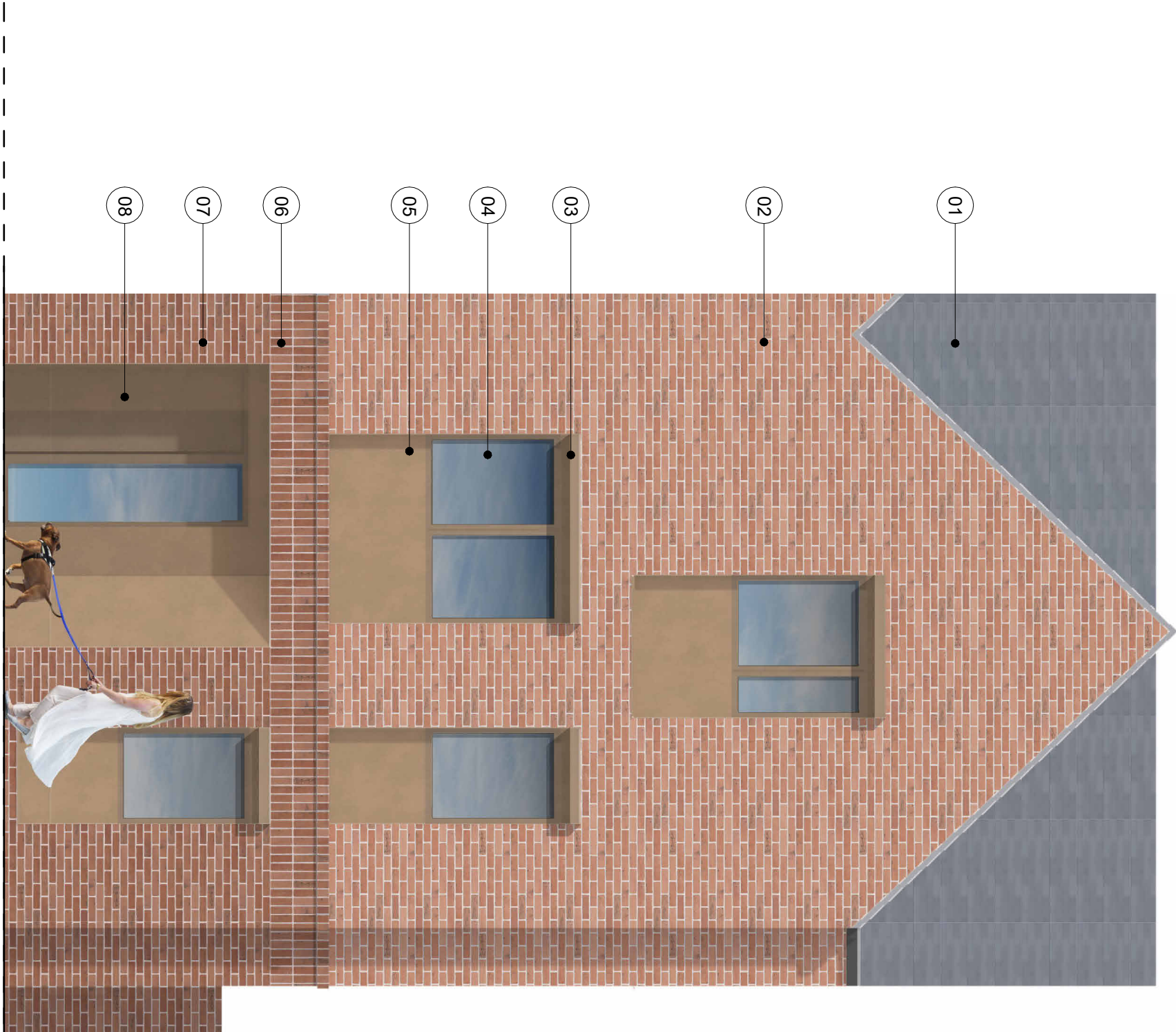
Architectural Materials Bay Elevations

REV.	DATE	DESCRIPTION
P1	28.02.25	Draft Planning Issue For Comment
P2	10.03.25	Issue For Planning
P3	03.10.25	Issue For Planning

--	--

DRWN BY AKG	CHKD BY MA	APPD BY MA
DRAWING NO.		
project code - originator - volume - sheet - type - date - number HOR-ACG-XX-XX-DR-A-9806		

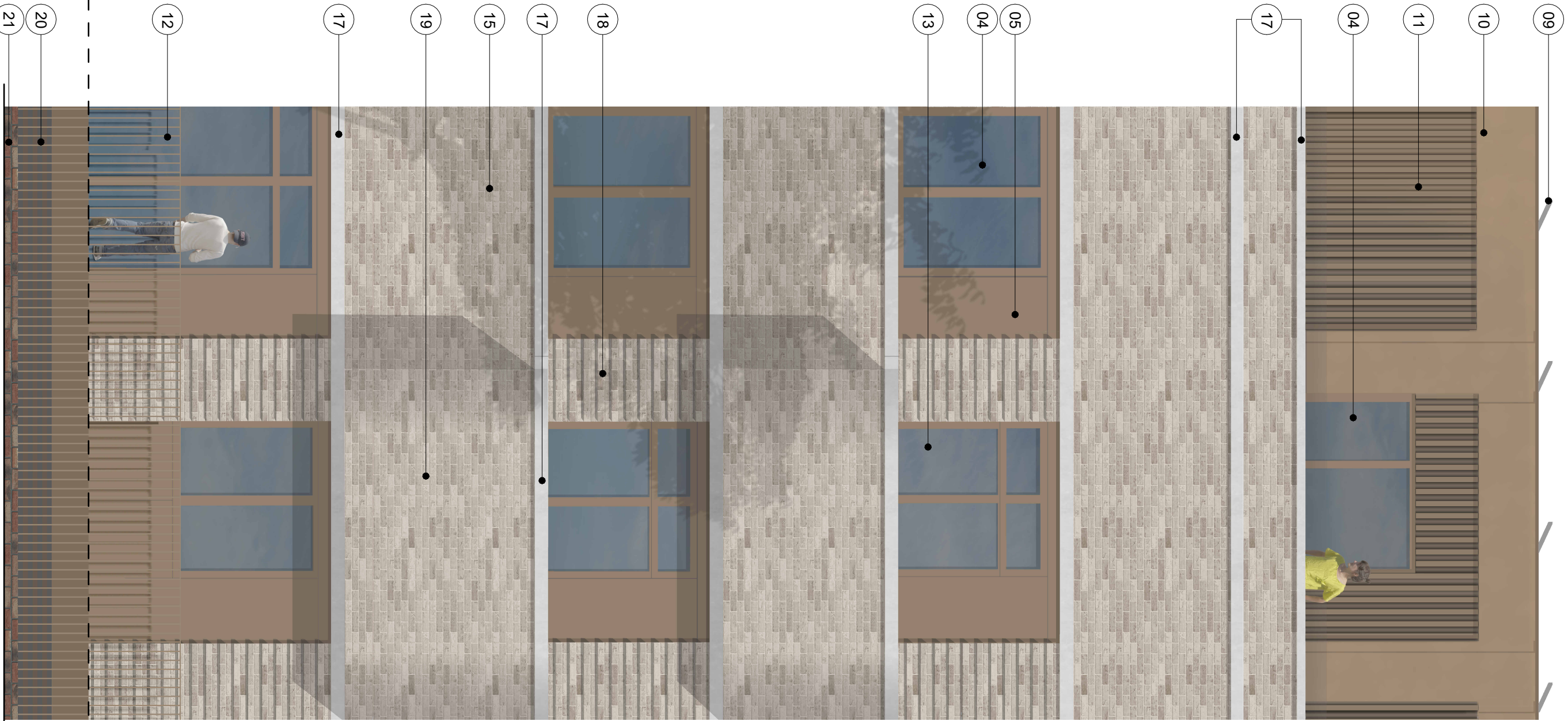
STAGE	SUTABILITY
RelA stage 3	code S3 description Suitable for Review & Comment



1 Typical Townhouse Type Bay Elevation
NTS



2 Typical New Apartment Building Bay Elevation
NTS



3 Typical Non-Designated Heritage Asset Bay Elevation
NTS

GRD FLOOR