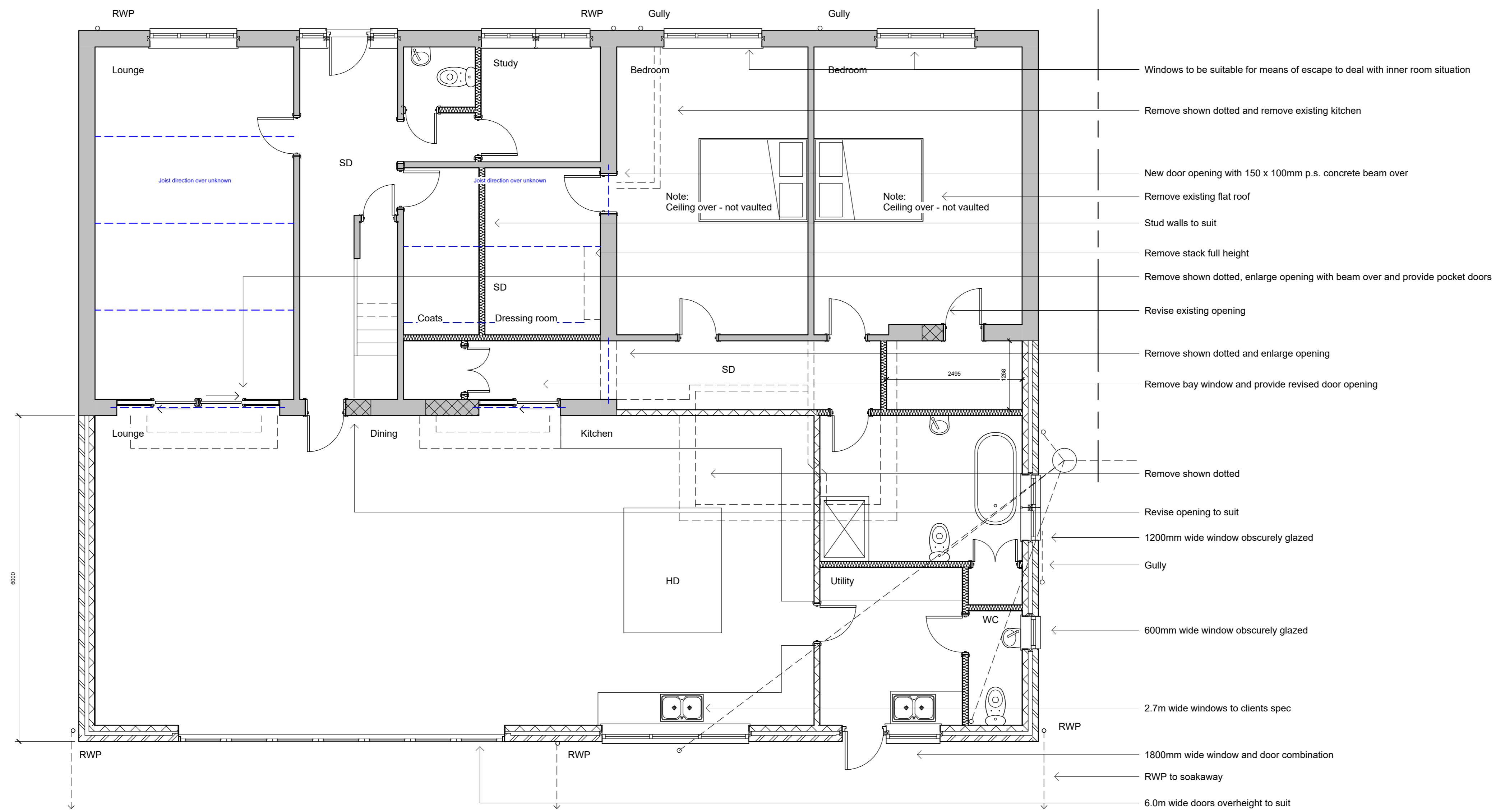
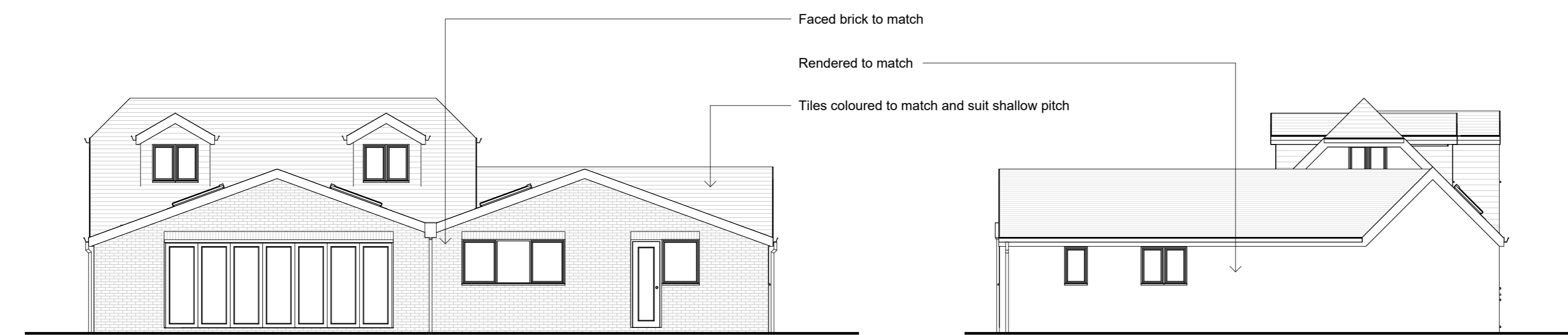


Ground Floor

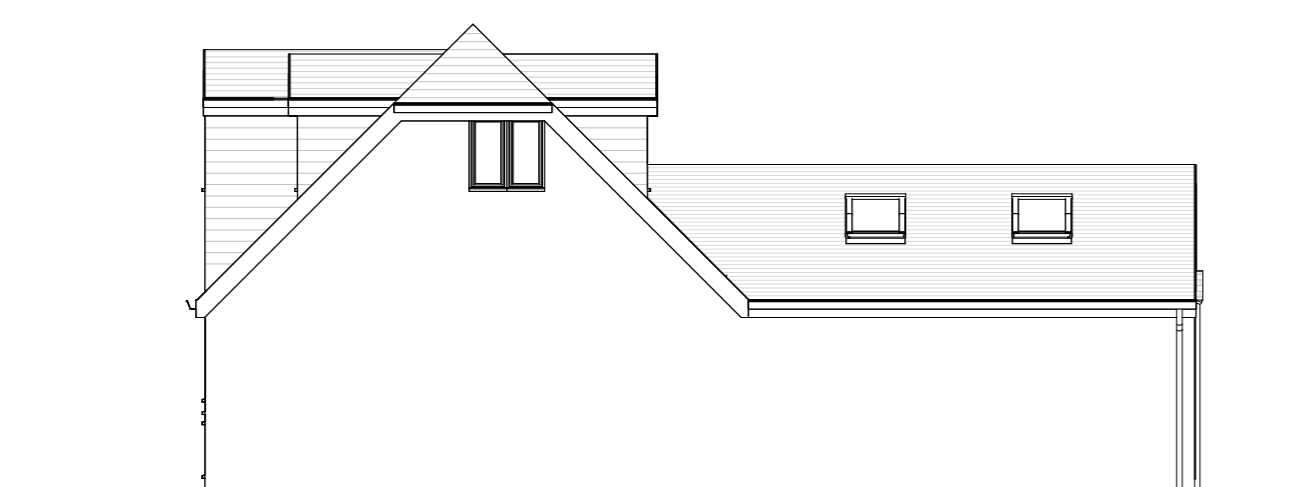


- Windows to be suitable for means of escape to deal with inner room situation
- Remove shown dotted and remove existing kitchen
- New door opening with 150 x 100mm p.s. concrete beam over
- Remove existing flat roof
- Stud walls to suit
- Remove stack full height
- Remove shown dotted, enlarge opening with beam over and provide pocket doors
- Revise existing opening
- Remove shown dotted and enlarge opening
- Remove bay window and provide revised door opening
- Remove shown dotted
- Revise opening to suit
- 1200mm wide window obscurely glazed
- Gully
- 600mm wide window obscurely glazed
- 2.7m wide windows to clients spec
- 1800mm wide window and door combination
- RWP to soakaway
- 6.0m wide doors overheight to suit



Rear Elevation

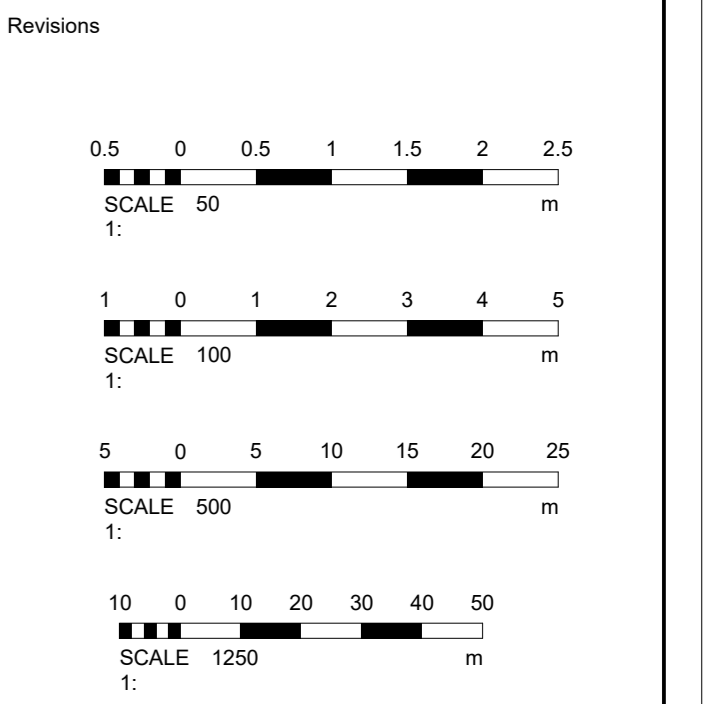
Side Elevation



Side Elevation



Front Elevation



Materials

Drawing Number 2025/221 Sheet 2 of 3

Size A1 Scale 1:50, 1:100, 1:500, 1:1250

Project
Proposed details
December 2025

Job Title
69 Pound Lane
Upper Beeding
Steyning
BN44 3JB

Do not scale from this drawing except for planning as photocopies will be subject to distortion. Drawings to be read in conjunction with all other Designers and structural engineers contract drawings and specifications. Any discrepancies must be brought to the attention of the Designer immediately. The contractor must verify all dimensions by site measurement before ordering materials or manufacturing components. Substitute materials and products to those named will be acceptable if proven to be of equal or higher performance and not in conflict with other elements.

M.J.Humphrey Ltd



Mel Humphrey MRICS 9 Aldsworth Avenue Goring By Sea West Sussex BN12 4XQ
Adam Humphrey MCIQB 21 Pendine Avenue Worthing West Sussex BN11 2NA

Mel@mjhumphrey.co.uk 07701055182 Adam@mjhumphrey.co.uk 07812419142