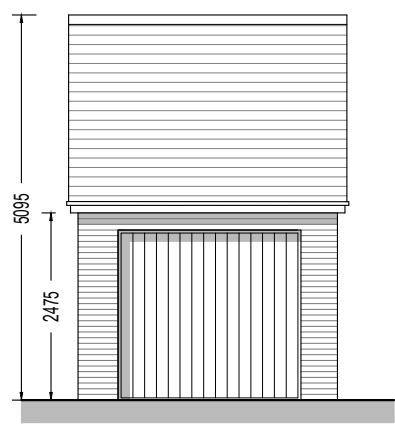
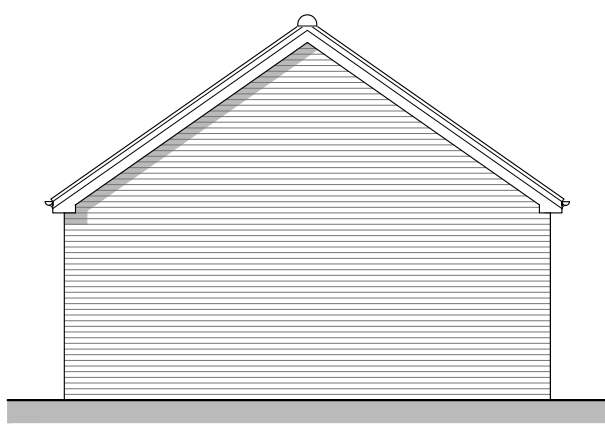


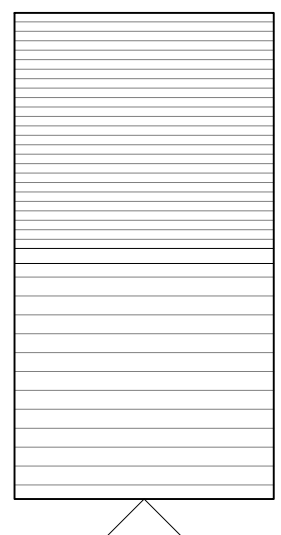
Ground Floor Plan
(Single Garage)



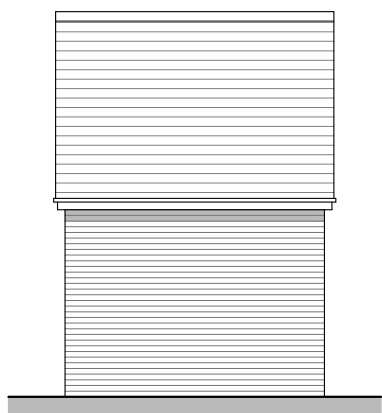
Front Elevation



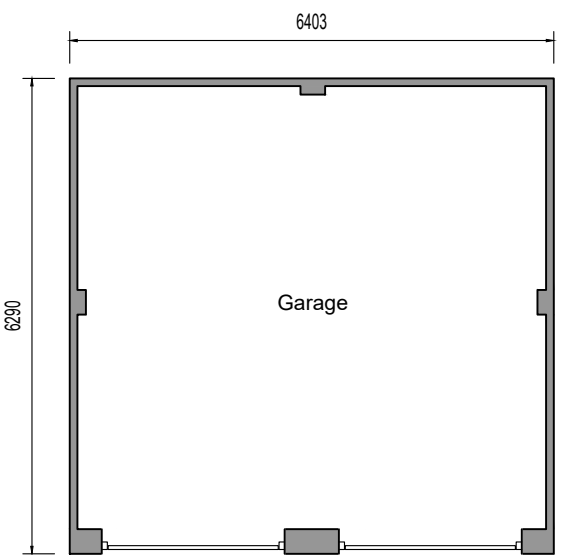
Side Elevation



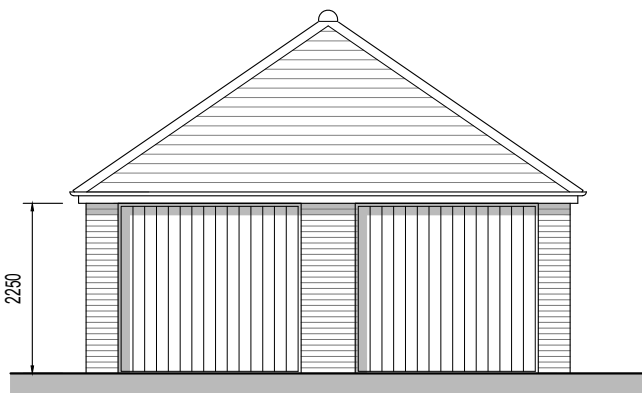
Roof Plan



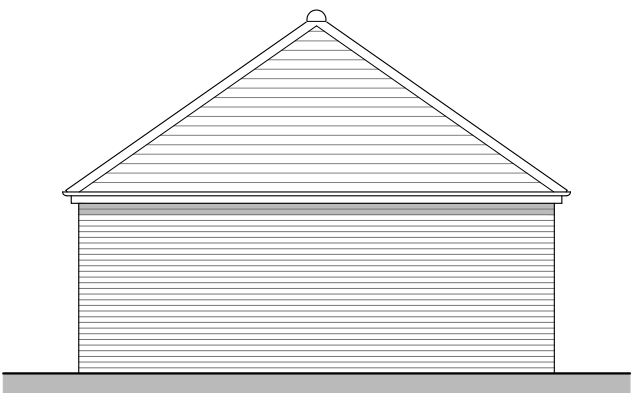
Rear Elevation



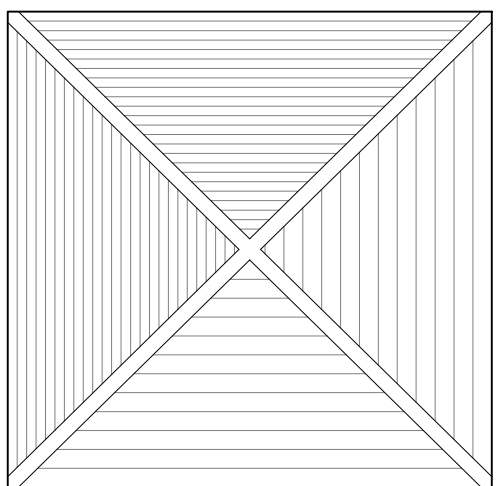
Ground Floor Plan
(Double Garage)



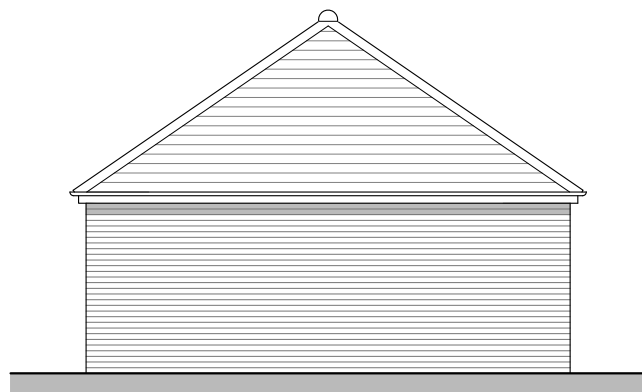
Front Elevation



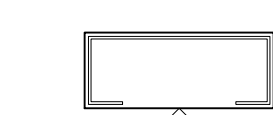
Side Elevation



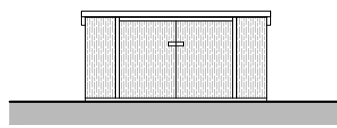
Roof Plan



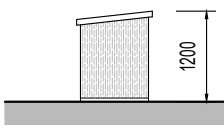
Rear Elevation



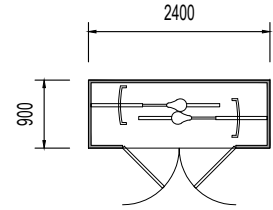
Roof Plan



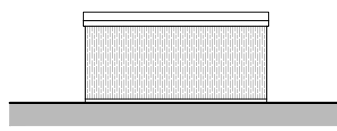
Front Elevation
Lockable proprietary timber cycle store



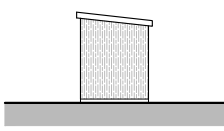
Side Elevation



Ground Floor Plan



Rear Elevation

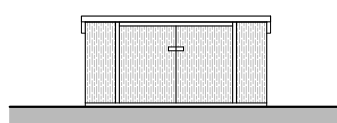


Side Elevation

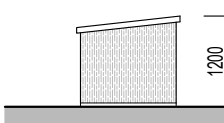
Cycle Storage
(2 Bike Shed)



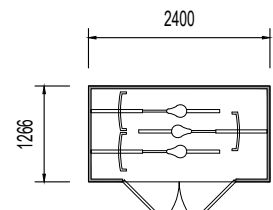
Roof Plan



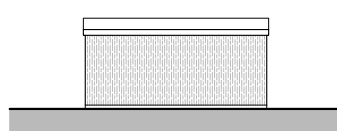
Front Elevation
Lockable proprietary timber cycle store



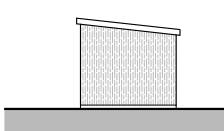
Side Elevation



Ground Floor Plan



Rear Elevation

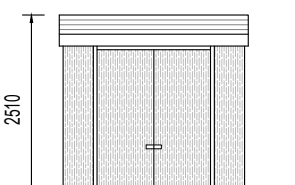


Side Elevation

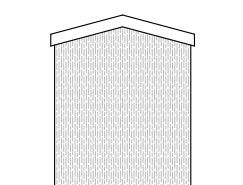
Cycle Storage
(3 Bike Shed)



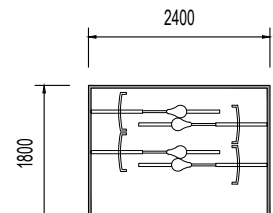
Roof Plan



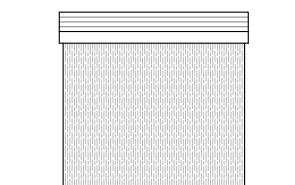
Front Elevation



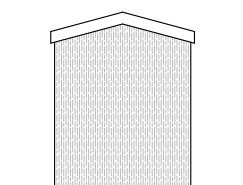
Side Elevation



Ground Floor Plan



Rear Elevation



Side Elevation

Cycle Storage
(4 Bike Shed)

REV.	DATE	REVISIONS:	BY	REV.	DATE	REVISIONS:	BY	REV.	DATE	REVISIONS:	BY	STATUS:

CLIENT:	Miller Homes	PROJECT:	Barns Green, Horsham
SCALE:	1:100 (A1 ORIGINAL)	DRAWING:	Proposed Ancillary Buildings
DRAWN:	AM	24088	P140
DATE:	15/09/25		—



OSP
architecture

Broadmeade House, Farnham Business Park,
Weydon Lane, Farnham, Surrey GU9 9QT.
info@osparchitecture.com · www.osparchitecture.com
Tel: 01252 267878