

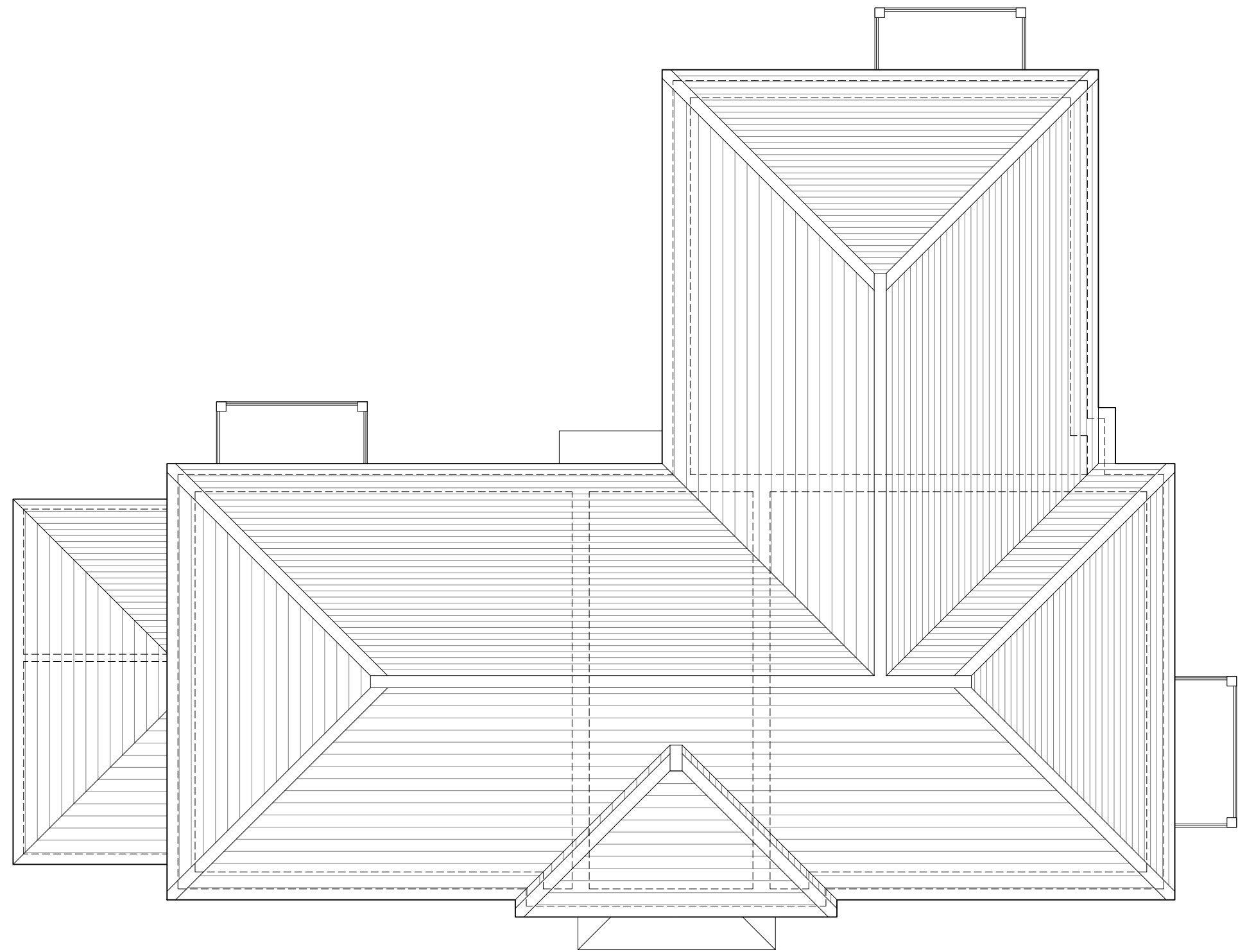
Nationally Described Space Standards (2 Bed 3 person 1 storey)	
Gross Internal Area (requirement 61m²)	61.2m²
Built-in storage (requirement 2.0m²)	2.14m²
Bed 1 - Double/ twin (req. 11.5m², 2.75m wide)	13.03m², 3.30m
Bed 2 - Single (req. 7.5m², 2.15m wide)	8.29m², 2.15m



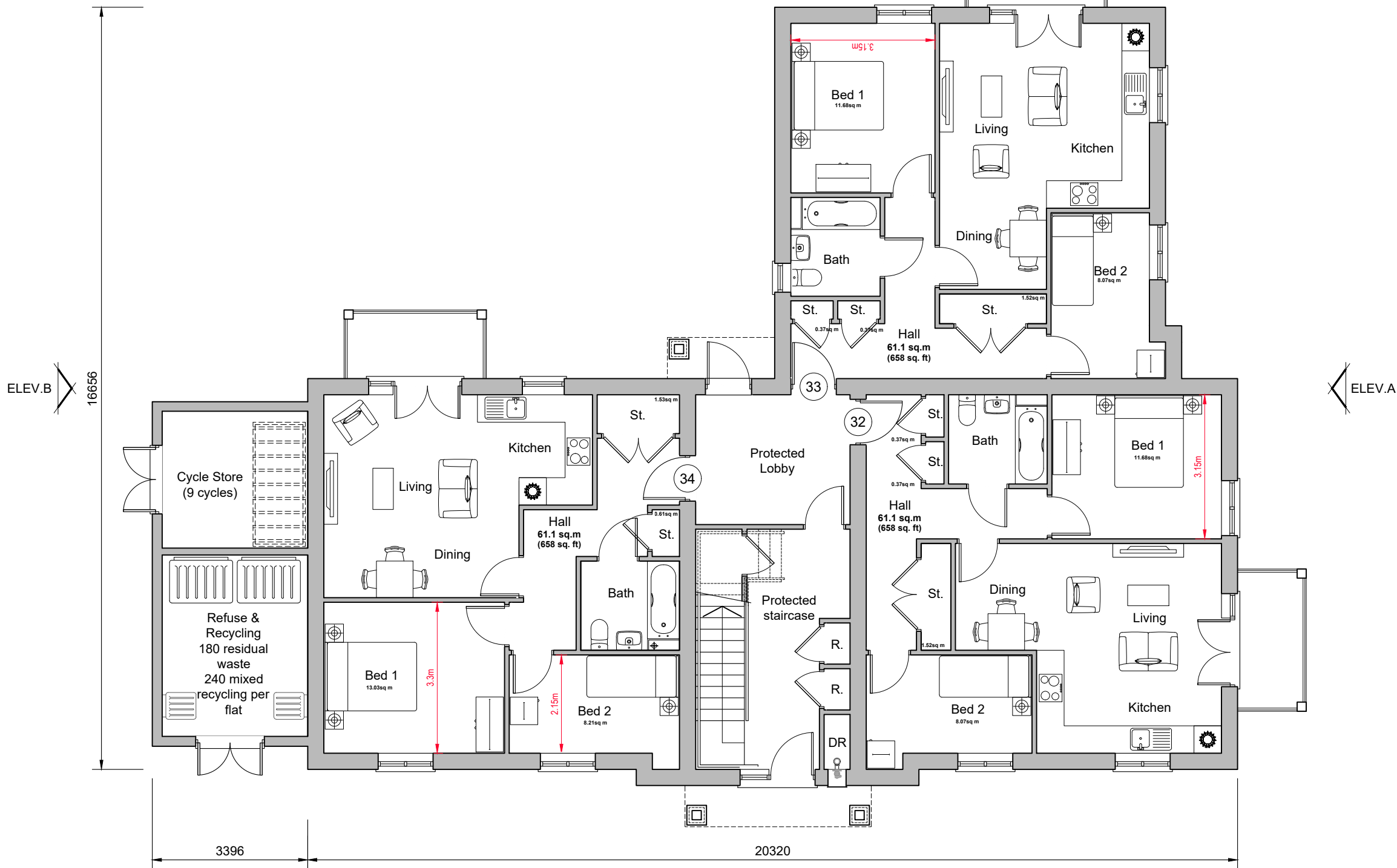
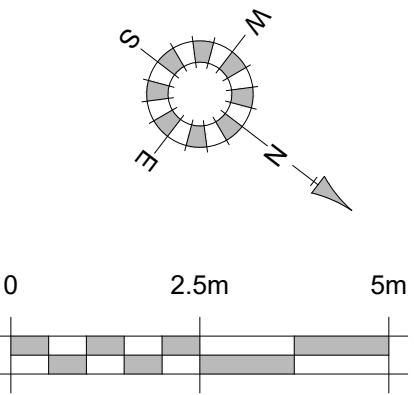
First Floor Plan

Nationally Described Space Standards (2 Bed 3 person 1 storey)	
Gross Internal Area (requirement 61m²)	61.2m²
Built-in storage (requirement 2.0m²)	2.14m²
Bed 1 - Double/ twin (req. 11.5m², 2.75m wide)	13.03m², 3.30m
Bed 2 - Single (req. 7.5m², 2.15m wide)	8.29m², 2.15m

Nationally Described Space Standards (2 Bed 3 person 1 storey)	
Gross Internal Area (requirement 61m²)	61.1m²
Built-in storage (requirement 2.0m²)	2.26m²
Bed 1 - Double/ twin (req. 11.5m², 2.75m wide)	11.68m², 3.15m
Bed 2 - Single (req. 7.5m², 2.15m wide)	8.08m², 2.15m



Roof Plan



Ground Floor Plan

Preliminary

REV. A	DATE 06/08/25	REVISIONS: Client comment revisions.	BY AM	REV. DATE	REVISIONS:	BY	REV. DATE	REVISIONS:	BY	STATUS:	CLIENT: Miller Homes	PROJECT: Barns Green, Horsham	 Broadmeade House, Farnham Business Park, Weydon Lane, Farnham, Surrey GU9 8QT. info@osparchitecture.com www.osparchitecture.com Tel: 01252 267878
											SCALE: 1:100 (A1 ORIGINAL)	DRAWING: Plots 32 - 37 Proposed Floor Plans	
											DRAWN: NCL	24088	P133
											DATE: 21/07/25		A