

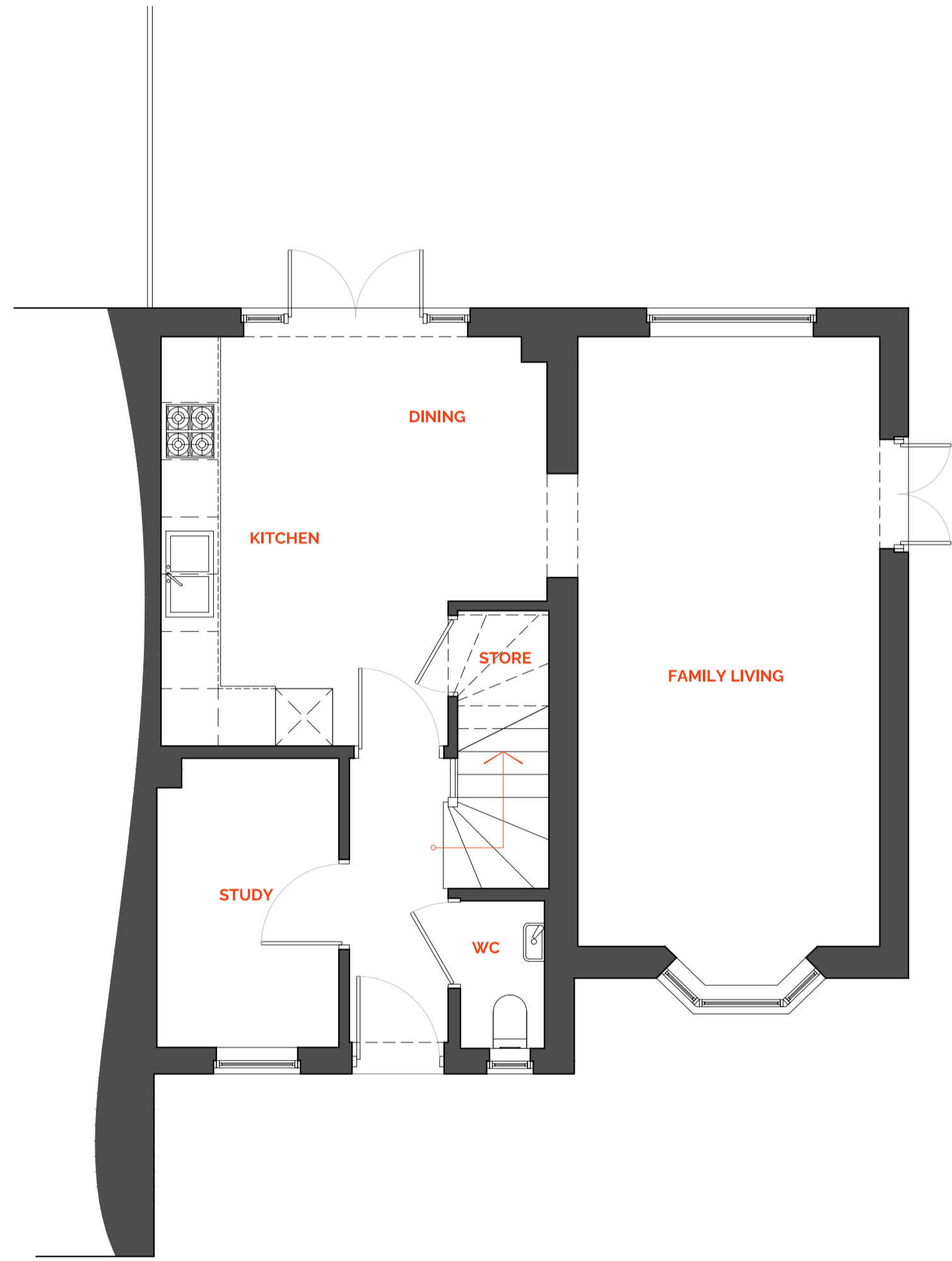
**DISCLAIMER**

The copyright in all designs, drawings, reports, models, specifications, bills of quantities, calculations and any other documents prepared by Elements Architectural Studio shall remain vested in Elements Architectural Studio and may not be copied, reproduced or distributed to third parties without our prior written consent.

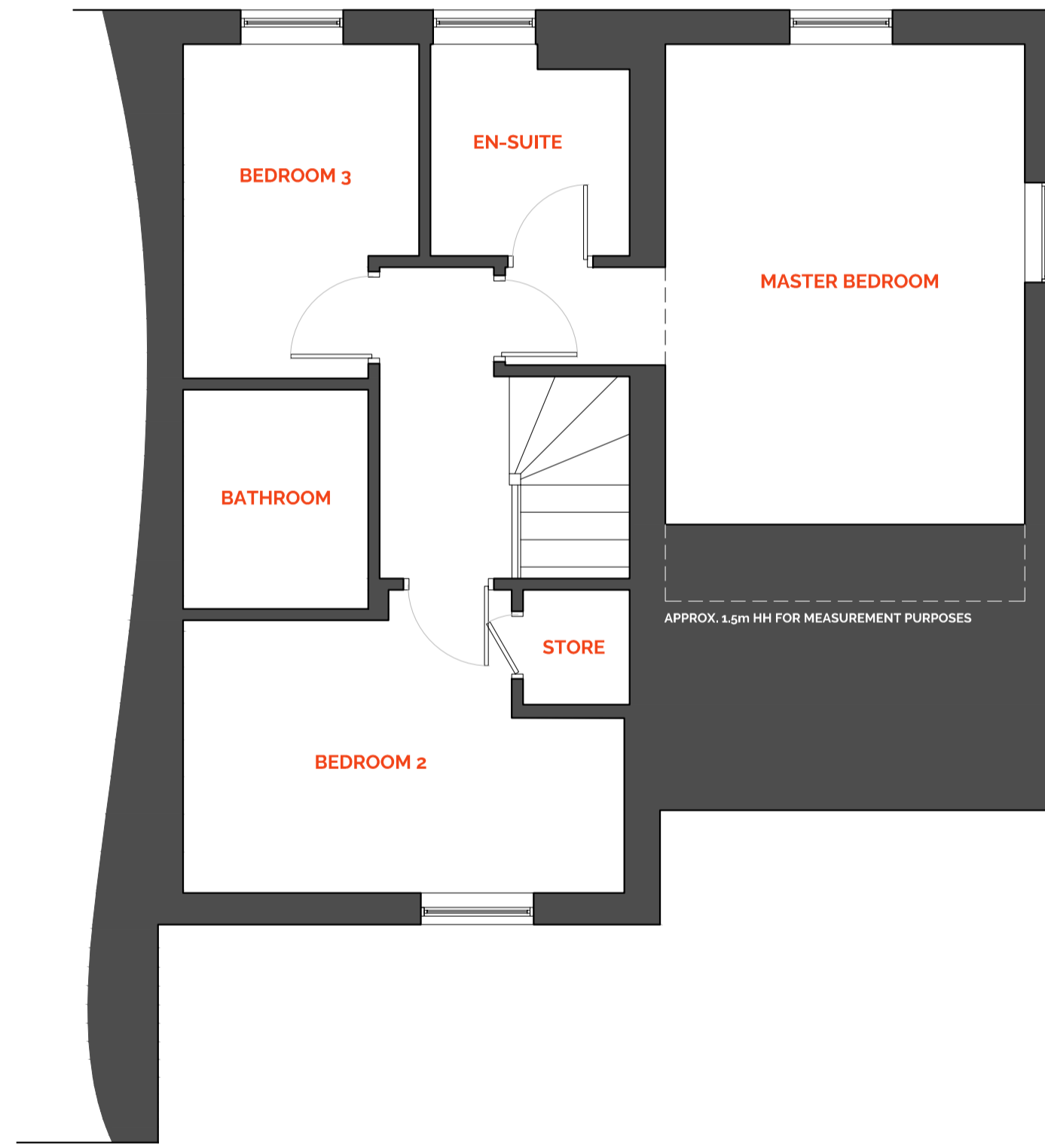
This drawing is to be read in conjunction with all relevant supporting drawings, documents and information submitted alongside including any survey or specialist designs and comments.

Stage 2 + 3 designs, whilst produced to be feasible, do not omit the need for Stage 4 Technical drawings/specifications, do not necessarily meet all requirements of the Building Regulations and must therefore not be built from.

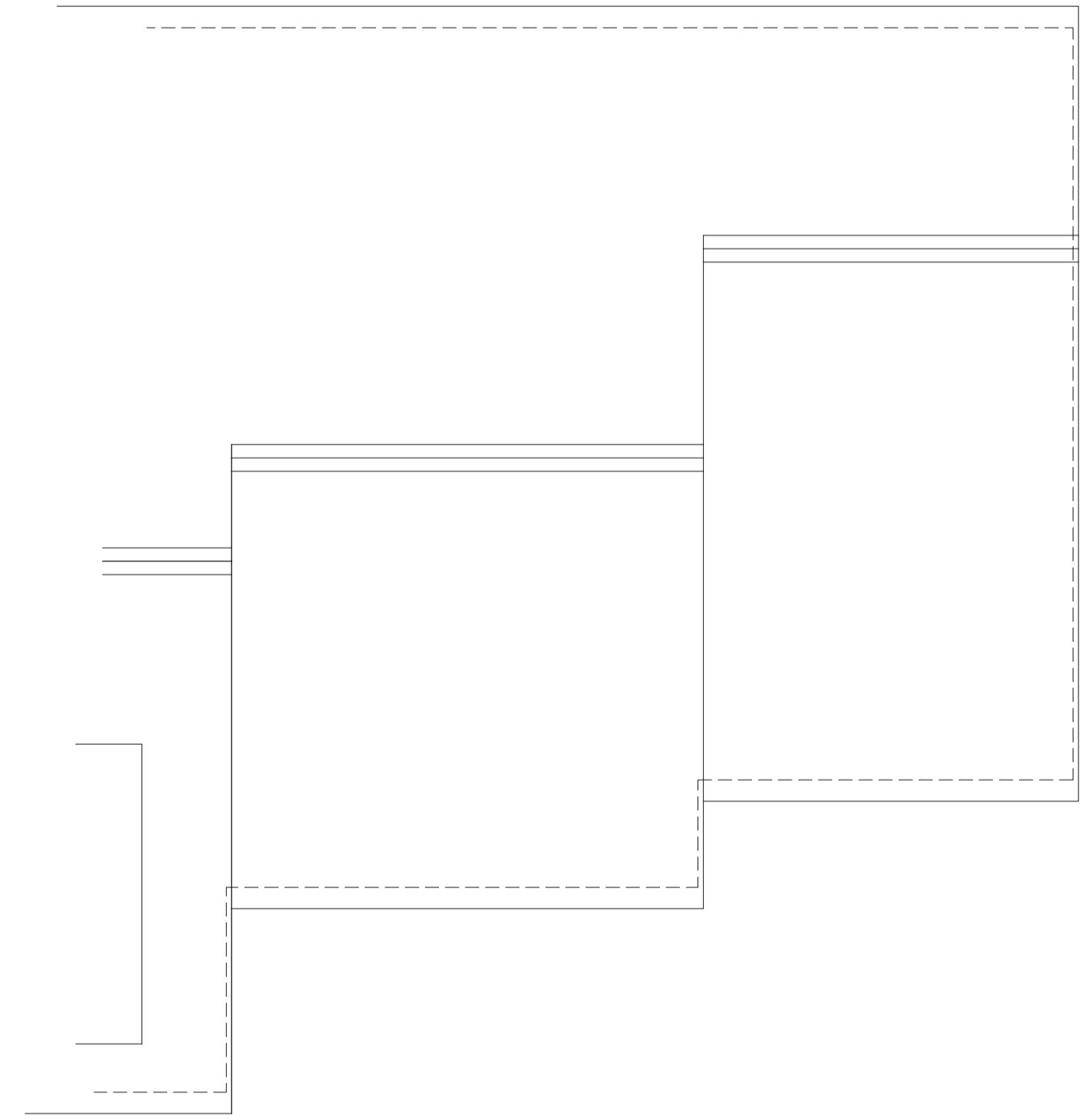
Any discrepancies are to be raised immediately. No assumptions are to be made unless otherwise noted.



**GROUND FLOOR**  
53.03 m<sup>2</sup> / 571 sq.ft.



**FIRST FLOOR**  
46.05 m<sup>2</sup> / 496 sq.ft.  
TOTAL  
99.08 m<sup>2</sup> / 1,067 sq.ft.



**ROOF**

