

9.3

Site Character Photography



Photograph A - Christ's Hospital Station Parcels (August 2025)
View looking southeast from the western side of the Site boundary, beside a pedestrian swing-gate.

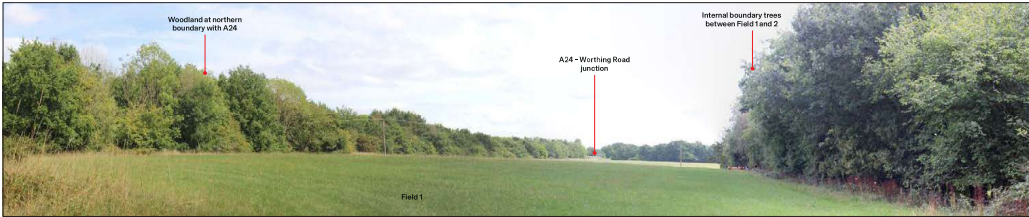


Photograph B (August 2025)
View looking west from the dairy farm, across field 3 towards Grade II Listed Sluett's, which is situated to the immediate west of the western boundary.





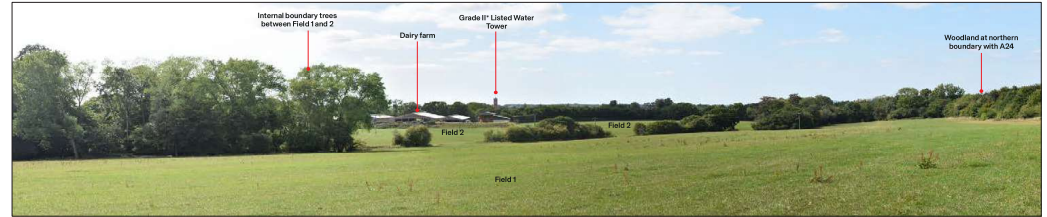
Photograph C (August 2025)
View looking south towards the Dairy farm, from the northwestern corner of field 2.



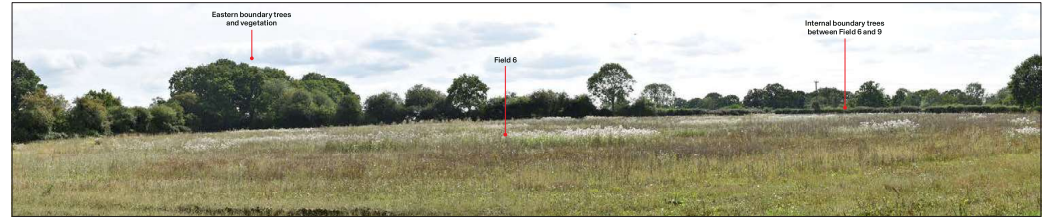
Photograph D (August 2025)
View looking southwest across field 1 towards Worthing Road and the A24 junction.



Site boundary
Photo location



Photograph E (August 2025)
View looking west towards the dairy farm, from the eastern boundary of field 1. From this location, the Grade II* Listed Water Tower at Christ's Hospital School, is apparent, amongst the tree skyline.



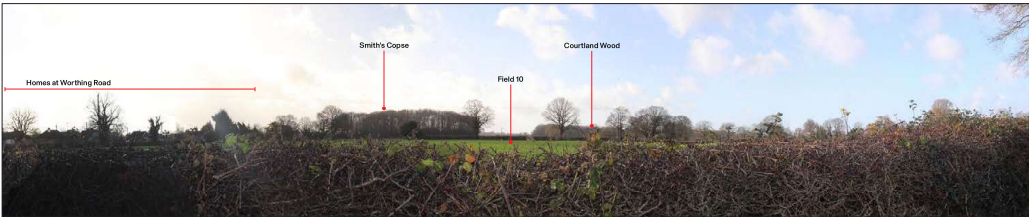
Photograph F (August 2025)
View looking into field 6, from the southern edge of the tree belt which crosses west to east and immediately south of the dairy farm, trees at the field boundaries inform a verdant skyline.



Site boundary
Photo location



Photograph G (December 2025)
View looking east from Bridleway SOW-1662 on the western boundary, which is framed by mature hedgerow at the southern edge of Field 8.



Photograph H (December 2025)
View looking southwest from Bridleway SOW-1662 along the northern boundary, which is framed by mature hedgerow at the northern edge of Field 10.



Site boundary
Photo location



Photograph I (December 2025)
View looking northwest from Footpath SOW-1660, at the southeastern corner of Field 13 - at the Site's eastern boundary.



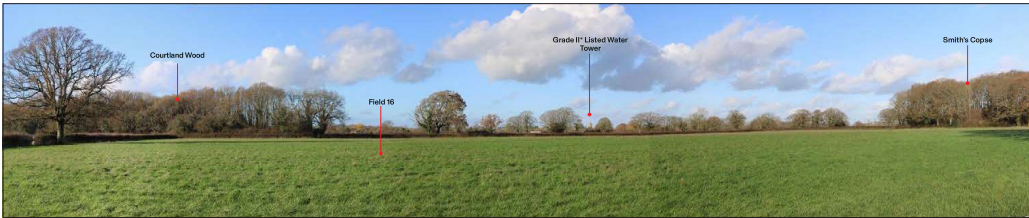
Photograph J (December 2025)
View looking southeast from Footpath SOW-1660, at the northwestern corner of Field 14.



Site boundary
Photo location



Photograph K (December 2025)
View looking northeast from Field 16, adjacent to Courtland Wood. From here, Smith's Copse is apparent, together with existing homes at Fletchers and Worthing Road at the settlement edge.



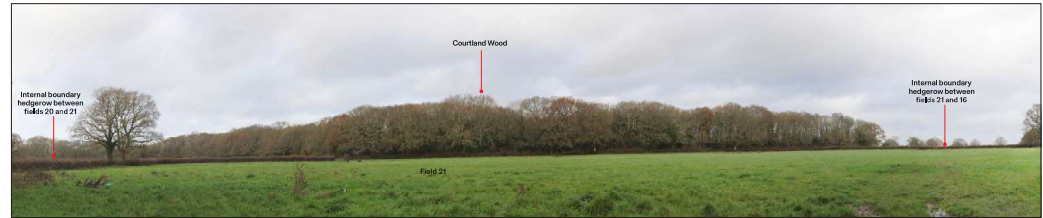
Photograph L (December 2025)
View looking northwest from the southwestern corner of Field 16, and the alignment of footpath SOW-1656, from here there are views of the Grade II* Listed Water Tower at Christ's Hospital School.



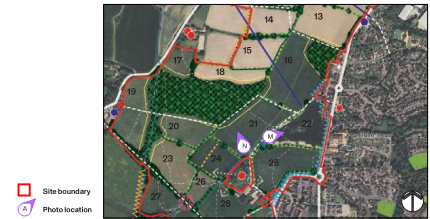
Site boundary
Photo location



Photograph M (December 2025)
View looking east from the southwestern corner of Field 22, and the alignment of footpath SOW-1656, where there are views of the Site's mature hedgerows, trees and Southwater's western settlement edge.



Photograph N (December 2025)
View looking northeast from footpath SOW-1656, and the southeastern corner of Field 21, where there are views of Courtland Wood Ancient Woodland, and the Site's mature hedgerows and trees.



Site boundary
Photo location



Photograph O (December 2025)
View looking west from footpath SOW-1656 towards Grade II* Listed Great House Farmhouse.



Photograph P1 (December 2025)
View looking west from footpath SOW-1656, at the eastern corner of field 27, at the junction with the Downs Link (Bridleway SOW-3568)



Site boundary
Photo location



Photograph P2 (December 2025)
View looking east towards Grade II* Listed Great House Farmhouse from the Downs Link (Bridleway SOW-3568).



Photograph P3 (December 2025)
View looking northeast from the Downs Link (Bridleway SOW-3568) towards Courtland Wood. Great Farmhouse is glimpsed to the east from this location.



Site boundary
Photo location



Photograph Q (December 2025)
View looking north-west from footpath SOW-1655 and the southern corner of Field 27.



Photograph R (August 2025)
View looking north-east from the southwestern corner of Field 19, adjacent to the Bax Castle Pub. Courtland Wood Ancient Woodland is prominent, truncating wider views of the Site from this location.



Site boundary
Photo location



Photograph S (August 2025)
View looking southeast from Field 23, and from where the tree belt associated with the Downs Link is apparent, together with other mature trees at field boundaries, and homes at the existing settlement edge, nestled amongst the verdant skyline.



Photograph T (December 2025)
View looking southeast from Field 20, adjacent to the southern edge of Courtland Wood Ancient Woodland. From here, the Grade II* Listed Great House Farmhouse is apparent, nestled amongst the tree skyline and seen within the context of the existing settlement edge of Southwater.



Site boundary
Photo location