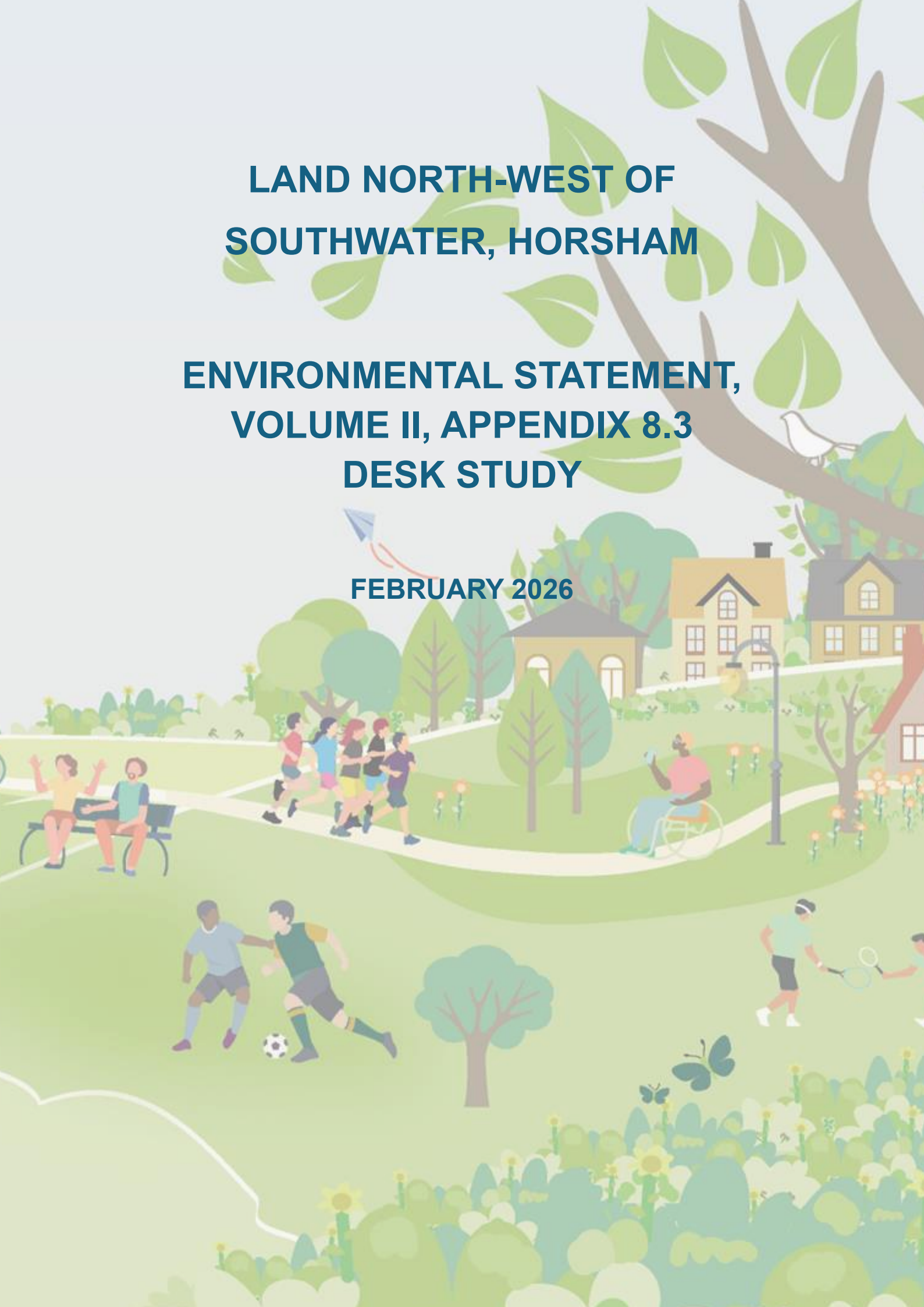
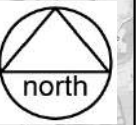


**LAND NORTH-WEST OF
SOUTHWATER, HORSHAM**


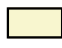

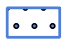

**ENVIRONMENTAL STATEMENT,
VOLUME II, APPENDIX 8.3
DESK STUDY**

FEBRUARY 2026





KEY

-  Site boundary
-  10km Site Buffer
-  Ramsar
-  Special Protection Areas
-  Special Areas of Conservation

CLIENT:
Berkeley Strategic Land Ltd

PROJECT:
Land North-West of Southwater, Horsham

TITLE:
10km Internationally Designated Areas

SCALE AT A3: DATE:
See scale bar January 2026

2090.78 / 21

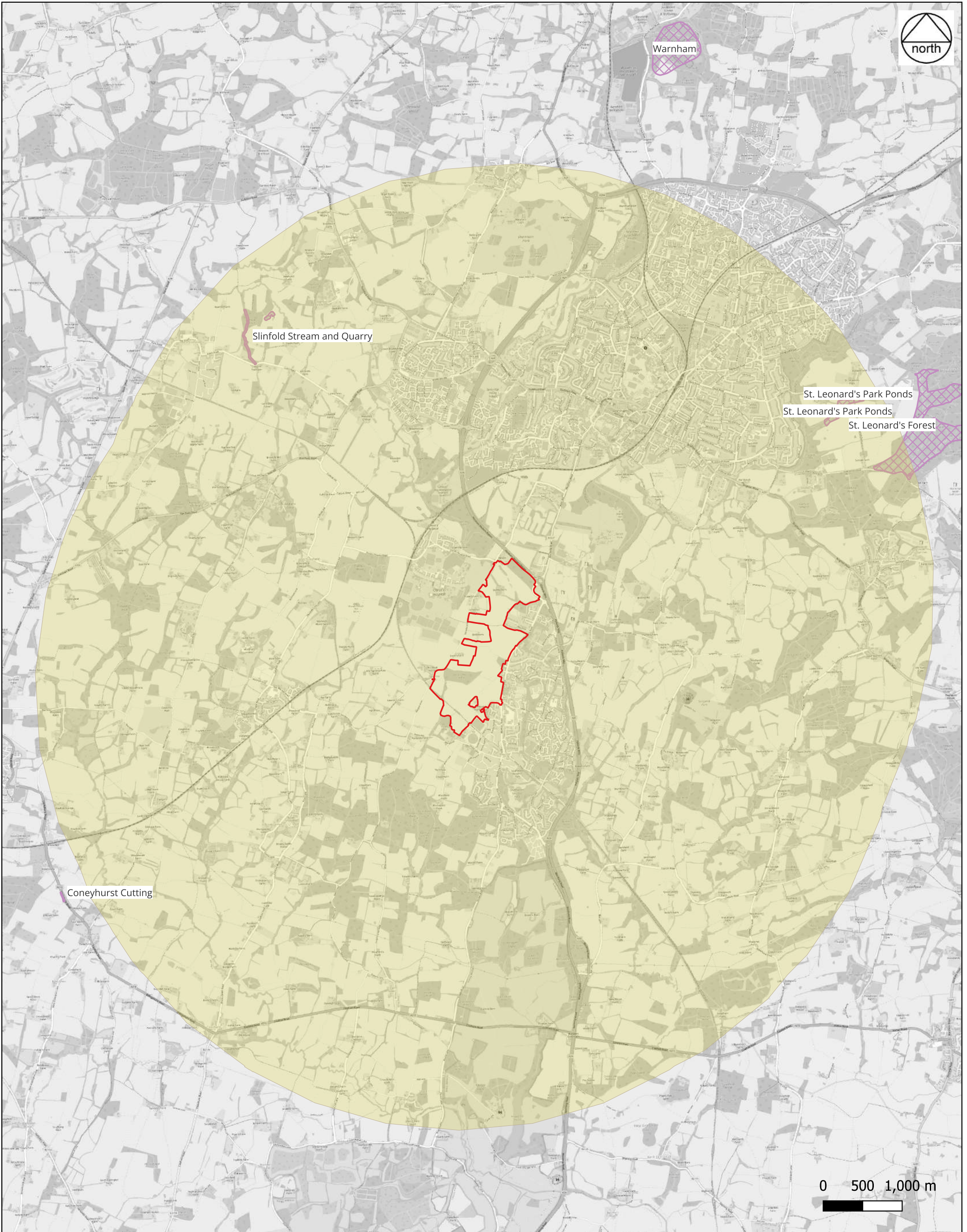
Based on Ordnance Survey mapping with permission of Her Majesty's Stationery Office
Licence no. AR187372

© hankinson duckett associates

The Stables, Howbery Park, Benson Lane, Wallingford, OX10 8BA
t 01491 838175 e consult@hda-enviro.co.uk w www.hda-enviro.co.uk

Landscape Architecture
Masterplanning
Ecology





KEY

- Site boundary
- 5km Site Buffer
- Sites of Special Scientific Interest
- National Nature Reserves

CLIENT:
Berkeley Strategic Land Ltd

PROJECT:
Land North-West of Southwater, Horsham

TITLE:
5km Nationally Designated Areas

SCALE AT A3: DATE:
See scale bar January 2026

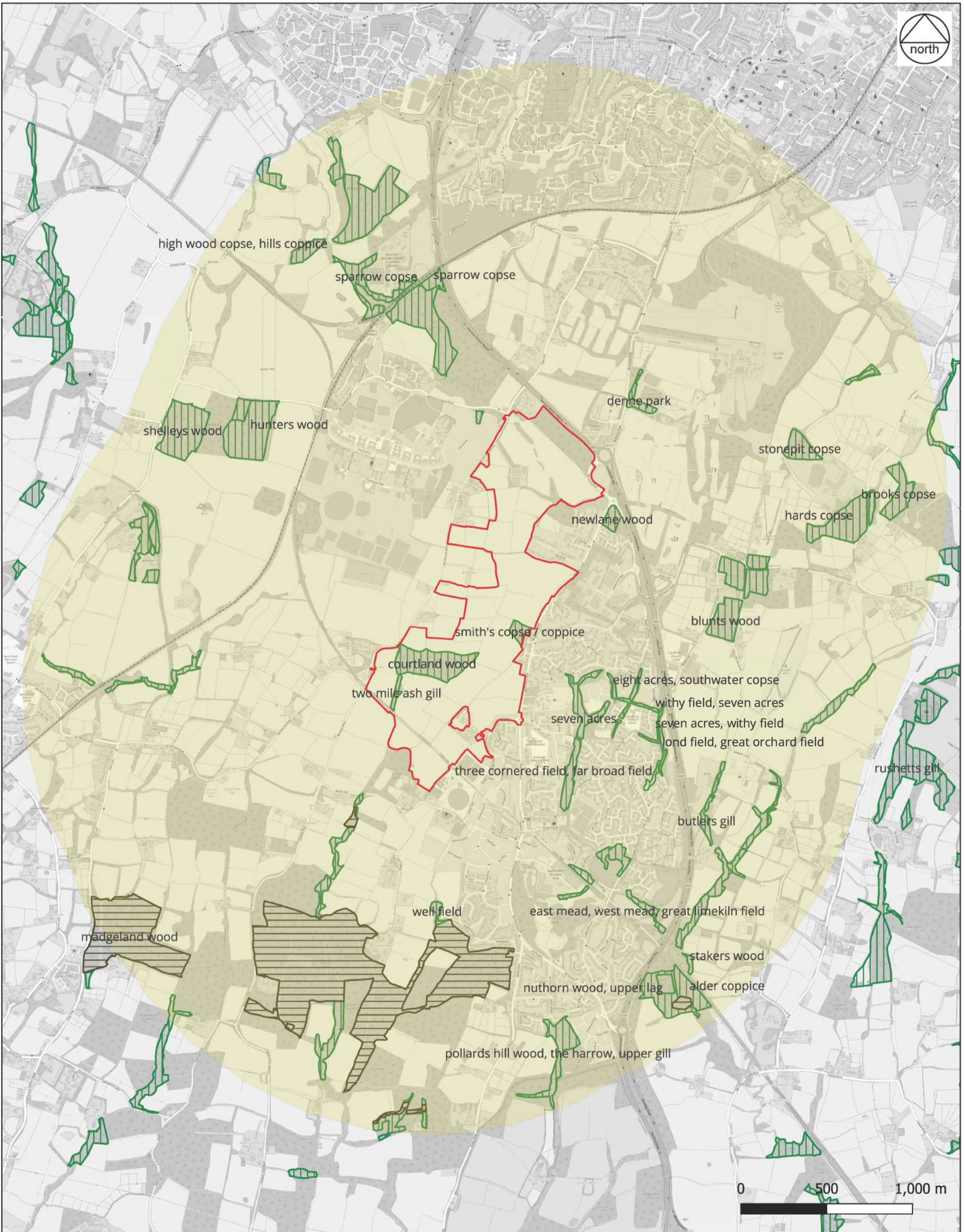
2090.78 / 20

Based on Ordnance Survey mapping with permission of Her Majesty's Stationery Office
Licence no. AR187372

© hankinson duckett associates
The Stables, Howbery Park, Benson Lane, Wallingford, OX10 8BA
† 01491 838175 e consult@hda-enviro.co.uk w www.hda-enviro.co.uk

Landscape Architecture
Masterplanning
Ecology





KEY

- Site boundary
- 2km Site Buffer
- Local Nature Reserves
- Ancient & Semi-Natural Woodland
- Ancient Replanted Woodland

CLIENT:
Berkeley Strategic Land Ltd

PROJECT:
Land North-West of Southwater, Horsham

TITLE:
2km Ancient and Semi-Natural Woodland

SCALE AT A3: DATE:
See scale bar January 2026

2090.78 / 19

Based on Ordnance Survey mapping with permission of Her Majesty's Stationery Office
Licence no. AR187372

© hankinson duckett associates

The Stables, Howbery Park, Benson Lane, Wallingford, OX10 8BA
t 01491 838175 e consult@hda-enviro.co.uk w www.hda-enviro.co.uk

Landscape Architecture
Masterplanning
Ecology



STANDARD DATA FORM for sites within the 'UK national site network of European sites'

Special Protection Areas (SPAs) are classified and Special Areas of Conservation (SACs) are designated under:

- the Conservation of Habitats and Species Regulations 2017 (as amended) in England and Wales (including the adjacent territorial sea) and to a limited extent in Scotland (reserved matters) and Northern Ireland (excepted matters);
- the Conservation (Natural Habitats &c.) Regulations 1994 (as amended) in Scotland;
- the Conservation (Natural Habitats, &c) Regulations (Northern Ireland) 1995 (as amended) in Northern Ireland; and
- the Conservation of Offshore Marine Habitats and Species Regulations 2017 (as amended) in the UK offshore area.

Each SAC or SPA (forming part of the UK national site network of European sites) has its own Standard Data Form containing site-specific information. The information provided here generally follows the same documenting format for SACs and SPAs, as set out in the [Official Journal of the European Union recording the Commission Implementing Decision of 11 July 2011 \(2011/484/EU\)](#).

Please note that these forms contain a number of codes, all of which are explained either within the data forms themselves or in the end notes.

More general information on SPAs and SACs in the UK is available from the [SPA homepage](#) and [SAC homepage](#) on the JNCC website. These webpages also provide links to Standard Data Forms for all SAC and SPA sites in the UK.

<https://jncc.gov.uk/>



NATURA 2000 - STANDARD DATA FORM

For Special Protection Areas (SPA),
Proposed Sites for Community Importance (pSCI),
Sites of Community Importance (SCI) and
for Special Areas of Conservation (SAC)

SITE UK0012716

SITENAME The Mens

TABLE OF CONTENTS

- [1. SITE IDENTIFICATION](#)
- [2. SITE LOCATION](#)
- [3. ECOLOGICAL INFORMATION](#)
- [4. SITE DESCRIPTION](#)
- [5. SITE PROTECTION STATUS AND RELATION WITH CORINE BIOTOPES](#)
- [6. SITE MANAGEMENT](#)

1. SITE IDENTIFICATION

1.1 Type B	1.2 Site code UK0012716	Back to top
----------------------	-----------------------------------	-----------------------------

1.3 Site name

The Mens

1.4 First Compilation date 1995-06	1.5 Update date 2015-12
--	-----------------------------------

1.6 Respondent:

Name/Organisation: Joint Nature Conservation Committee
Address: Joint Nature Conservation Committee Monkstone House City Road Peterborough PE1 1JY
Email:

Date site proposed as SCI:	1995-06
Date site confirmed as SCI:	2004-12
Date site designated as SAC:	2005-04
National legal reference of SAC designation:	Regulations 11 and 13-15 of the Conservation of Habitats and Species Regulations 2010 (http://www.legislation.gov.uk/uksi/2010/490/contents/made).

2. SITE LOCATION

[Back to top](#)

					Min	Max				Pop.	Con.	Iso.	Glo.
M	1308	Barbastella barbastellus		p	50	50	i		G	C	B	C	C

- **Group:** A = Amphibians, B = Birds, F = Fish, I = Invertebrates, M = Mammals, P = Plants, R = Reptiles
- **S:** in case that the data on species are sensitive and therefore have to be blocked for any public access enter: yes
- **NP:** in case that a species is no longer present in the site enter: x (optional)
- **Type:** p = permanent, r = reproducing, c = concentration, w = wintering (for plant and non-migratory species use permanent)
- **Unit:** i = individuals, p = pairs or other units according to the Standard list of population units and codes in accordance with Article 12 and 17 reporting (see [reference portal](#))
- **Abundance categories (Cat.):** C = common, R = rare, V = very rare, P = present - to fill if data are deficient (DD) or in addition to population size information
- **Data quality:** G = 'Good' (e.g. based on surveys); M = 'Moderate' (e.g. based on partial data with some extrapolation); P = 'Poor' (e.g. rough estimation); VP = 'Very poor' (use this category only, if not even a rough estimation of the population size can be made, in this case the fields for population size can remain empty, but the field "Abundance categories" has to be filled in)

4. SITE DESCRIPTION

[Back to top](#)

4.1 General site character

Habitat class	% Cover
N16	100.0
Total Habitat Cover	100

Other Site Characteristics

1 Terrestrial: Soil & Geology: acidic,nutrient-poor,clay,basic 2 Terrestrial: Geomorphology and landscape: lowland

4.2 Quality and importance

Atlantic acidophilous beech forests with Ilex and sometimes also Taxus in the shrublayer (Quercion robori-petraeae or Ilici-Fagenion) for which this is considered to be one of the best areas in the United Kingdom. *Barbastella barbastellus* for which the area is considered to support a significant presence.

4.3 Threats, pressures and activities with impacts on the site

The most important impacts and activities with high effect on the site

Negative Impacts			
Rank	Threats and pressures [code]	Pollution (optional) [code]	inside/outside [i o b]
H	B02		I
H	J03		B
H	M02		B
H	A02		I

Positive Impacts			
Rank	Activities, management [code]	Pollution (optional) [code]	inside/outside [i o b]

Rank: H = high, M = medium, L = low

Pollution: N = Nitrogen input, P = Phosphor/Phosphate input, A = Acid input/acidification, T = toxic inorganic chemicals, O = toxic organic chemicals, X = Mixed pollutions

i = inside, o = outside, b = both

4.5 Documentation

Conservation Objectives - the Natural England links below provide access to the Conservation Objectives (and other site-related information) for its terrestrial and inshore Natura 2000 sites, including conservation advice packages and supporting documents for European Marine Sites within English waters and for cross-border sites. See also the 'UK Approach' document for more information (link via the JNCC website).

Link(s): <http://publications.naturalengland.org.uk/category/6490068894089216>

<http://publications.naturalengland.org.uk/category/3212324>

http://jncc.defra.gov.uk/pdf/Natura2000_StandardDataForm_UKApproach_Dec2015.pdf

5. SITE PROTECTION STATUS (optional)

[Back to top](#)

5.1 Designation types at national and regional level:

Code	Cover [%]	Code	Cover [%]	Code	Cover [%]
UK04	100.0				

6. SITE MANAGEMENT

[Back to top](#)

6.1 Body(ies) responsible for the site management:

Organisation:	Natural England
Address:	
Email:	

6.2 Management Plan(s):

An actual management plan does exist:

<input type="checkbox"/>	Yes
<input type="checkbox"/>	No, but in preparation
<input checked="" type="checkbox"/>	No

6.3 Conservation measures (optional)

For available information, including on Conservation Objectives, see Section 4.5.

EXPLANATION OF CODES USED IN THE SPECIAL AREA OF CONSERVATION (SAC) AND SPECIAL PROTECTION AREA (SPA) STANDARD DATA FORMS

The codes in the table below generally follow those explained in the [official European Union guidelines for the Standard Data Form](#) (also referencing the relevant page number).

1.1 Site type

CODE	DESCRIPTION	PAGE NO
A	SPA (classified Special Protection Area)	53
B	cSAC, SCI or SAC (candidate Special Area of Conservation, Site of Community Importance, designated Special Area of Conservation)	53
C	SPA area/boundary is the same as the cSAC/SCI/SAC i.e. a co-classified/designated site (Note: this situation only occurs in Gibraltar)	53

3.1 Habitat code

CODE	DESCRIPTION	PAGE NO
1110	Sandbanks which are slightly covered by sea water all the time	57
1130	Estuaries	57
1140	Mudflats and sandflats not covered by seawater at low tide	57
1150	Coastal lagoons	57
1160	Large shallow inlets and bays	57
1170	Reefs	57
1180	Submarine structures made by leaking gases	57
1210	Annual vegetation of drift lines	57
1220	Perennial vegetation of stony banks	57
1230	Vegetated sea cliffs of the Atlantic and Baltic Coasts	57
1310	Salicornia and other annuals colonizing mud and sand	57
1320	Spartina swards (<i>Spartinion maritimae</i>)	57
1330	Atlantic salt meadows (<i>Glauco-Puccinellietalia maritimae</i>)	57
1340	Inland salt meadows	57
1420	Mediterranean and thermo-Atlantic halophilous scrubs (<i>Sarcocornetea fruticosi</i>)	57
2110	Embryonic shifting dunes	57
2120	Shifting dunes along the shoreline with <i>Ammophila arenaria</i> ("white dunes")	57
2130	Fixed coastal dunes with herbaceous vegetation ("grey dunes")	57
2140	Decalcified fixed dunes with <i>Empetrum nigrum</i>	57
2150	Atlantic decalcified fixed dunes (<i>Calluno-Ulicetea</i>)	57
2160	Dunes with <i>Hippophya rhamnoides</i>	57
2170	Dunes with <i>Salix repens</i> ssp. <i>argentea</i> (<i>Salicion arenariae</i>)	57
2190	Humid dune slacks	57
21A0	Machairs (* in Ireland)	57
2250	Coastal dunes with <i>Juniperus</i> spp.	57
2330	Inland dunes with open <i>Corynephorus</i> and <i>Agrostis</i> grasslands	57
3110	Oligotrophic waters containing very few minerals of sandy plains (<i>Littorelletalia uniflorae</i>)	57
3130	Oligotrophic to mesotrophic standing waters with vegetation of the <i>Littorelletea uniflorae</i> and/or of the <i>Isoëto-Nanojuncetea</i>	57
3140	Hard oligo-mesotrophic waters with benthic vegetation of <i>Chara</i> spp.	57
3150	Natural eutrophic lakes with <i>Magnopotamion</i> or <i>Hydrocharition</i> - type vegetation	57

CODE	DESCRIPTION	PAGE NO
3160	Natural dystrophic lakes and ponds	57
3170	Mediterranean temporary ponds	57
3180	Turloughs	57
3260	Water courses of plain to montane levels with the Ranunculion fluitantis and Callitriche-Batrachion vegetation	57
4010	Northern Atlantic wet heaths with Erica tetralix	57
4020	Temperate Atlantic wet heaths with Erica ciliaris and Erica tetralix	57
4030	European dry heaths	57
4040	Dry Atlantic coastal heaths with Erica vagans	57
4060	Alpine and Boreal heaths	57
4080	Sub-Arctic Salix spp. scrub	57
5110	Stable xerothermophilous formations with Buxus sempervirens on rock slopes (Berberidion p.p.)	57
5130	Juniperus communis formations on heaths or calcareous grasslands	57
6130	Calaminarian grasslands of the Violetalia calaminariae	57
6150	Siliceous alpine and boreal grasslands	57
6170	Alpine and subalpine calcareous grasslands	57
6210	Semi-natural dry grasslands and scrubland facies on calcareous substrates (Festuco-Brometalia) (* important orchid sites)	57
6230	Species-rich Nardus grasslands, on silicious substrates in mountain areas (and submountain areas in Continental Europe)	57
6410	Molinia meadows on calcareous, peaty or clayey-silt-laden soils (Molinion caeruleae)	57
6430	Hydrophilous tall herb fringe communities of plains and of the montane to alpine levels	57
6510	Lowland hay meadows (Alopecurus pratensis, Sanguisorba officinalis)	57
6520	Mountain hay meadows	57
7110	Active raised bogs	57
7120	Degraded raised bogs still capable of natural regeneration	57
7130	Blanket bogs (* if active bog)	57
7140	Transition mires and quaking bogs	57
7150	Depressions on peat substrates of the Rhynchosporion	57
7210	Calcareous fens with Cladium mariscus and species of the Caricion davallianae	57
7220	Petrifying springs with tufa formation (Cratoneurion)	57
7230	Alkaline fens	57
7240	Alpine pioneer formations of the Caricion bicoloris-atrofuscae	57
8110	Siliceous scree of the montane to snow levels (Androsacetalia alpinae and Galeopsietalia ladani)	57
8120	Calcareous and calcshist screes of the montane to alpine levels (Thlaspietea rotundifolii)	57
8210	Calcareous rocky slopes with chasmophytic vegetation	57
8220	Siliceous rocky slopes with chasmophytic vegetation	57
8240	Limestone pavements	57
8310	Caves not open to the public	57
8330	Submerged or partially submerged sea caves	57
9120	Atlantic acidophilous beech forests with Ilex and sometimes also Taxus in the shrublayer (Quercion robori-petraeae or Ilici-Fagenion)	57
9130	Asperulo-Fagetum beech forests	57
9160	Sub-Atlantic and medio-European oak or oak-hornbeam forests of the Carpinion betuli	57
9180	Tilio-Acerion forests of slopes, screes and ravines	57
9190	Old acidophilous oak woods with Quercus robur on sandy plains	57
91A0	Old sessile oak woods with Ilex and Blechnum in the British Isles	57
91C0	Caledonian forest	57
91D0	Bog woodland	57
91E0	Alluvial forests with Alnus glutinosa and Fraxinus excelsior (Alno-Padion, Alnion incanae, Salicion albae)	57
91J0	Taxus baccata woods of the British Isles	57

3.1 Habitat representativity (abbreviated to 'Representativity' in data form)

CODE	DESCRIPTION	PAGE NO
A	Excellent representativity	57
B	Good representativity	57
C	Significant representativity	57
D	Non-significant presence representativity	57

3.1 Relative surface

CODE	DESCRIPTION	PAGE NO
A	> 15%-100%	58
B	> 2%-15%	58
C	≤ 2%	58

3.1 Degree of conservation (abbreviated to 'Conservation' in data form)

CODE	DESCRIPTION	PAGE NO
A	Excellent conservation	59
B	Good conservation	59
C	Average or reduced conservation	59

3.1 Global assessment (abbreviated to 'Global' in data form)

CODE	DESCRIPTION	PAGE NO
A	Excellent value	59
B	Good value	59
C	Significant value	59

3.2 Population (abbreviated to 'Pop.' in data form)

CODE	DESCRIPTION	PAGE NO
A	> 15%-100%	62
B	> 2%-15%	62
C	≤ 2%	62
D	Non-significant population	62

3.2 Degree of conservation (abbreviated to 'Con.' in data form)

CODE	DESCRIPTION	PAGE NO
A	Excellent conservation	63
B	Good conservation	63
C	Average or reduced conservation	63

3.2 Isolation (abbreviated to 'Iso.' in data form)

CODE	DESCRIPTION	PAGE NO
A	Population (almost) Isolated	63
B	Population not-isolated, but on margins of area of distribution	63
C	Population not-isolated within extended distribution range	63

3.2 Global Grade (abbreviated to 'Glo.' or 'G.' in data form)

CODE	DESCRIPTION	PAGE NO
A	Excellent value	63
B	Good value	63
C	Significant value	63

3.3 Other species – essentially covers bird assemblage types

CODE	DESCRIPTION	PAGE NO
WATR	Non-breeding waterbird assemblage	UK specific code
SBA	Breeding seabird assemblage	UK specific code

BBA	Breeding bird assemblage (applies only to sites classified pre 2000)	UK specific code
-----	--	------------------

4.1 Habitat class code

CODE	DESCRIPTION	PAGE NO
N01	Marine areas, Sea inlets	65
N02	Tidal rivers, Estuaries, Mud flats, Sand flats, Lagoons (including saltwork basins)	65
N03	Salt marshes, Salt pastures, Salt steppes	65
N04	Coastal sand dunes, Sand beaches, Machair	65
N05	Shingle, Sea cliffs, Islets	65
N06	Inland water bodies (Standing water, Running water)	65
N07	Bogs, Marshes, Water fringed vegetation, Fens	65
N08	Heath, Scrub, Maquis and Garrigue, Phygrana	65
N09	Dry grassland, Steppes	65
N10	Humid grassland, Mesophile grassland	65
N11	Alpine and sub-Alpine grassland	65
N14	Improved grassland	65
N15	Other arable land	65
N16	Broad-leaved deciduous woodland	65
N17	Coniferous woodland	65
N19	Mixed woodland	65
N21	Non-forest areas cultivated with woody plants (including Orchards, groves, Vineyards, Dehesas)	65
N22	Inland rocks, Scree, Sands, Permanent Snow and ice	65
N23	Other land (including Towns, Villages, Roads, Waste places, Mines, Industrial sites)	65
N25	Grassland and scrub habitats (general)	65
N26	Woodland habitats (general)	65

4.3 Threats code

CODE	DESCRIPTION	PAGE NO
A01	Cultivation	65
A02	Modification of cultivation practices	65
A03	Mowing / cutting of grassland	65
A04	Grazing	65
A05	Livestock farming and animal breeding (without grazing)	65
A06	Annual and perennial non-timber crops	65
A07	Use of biocides, hormones and chemicals	65
A08	Fertilisation	65
A10	Restructuring agricultural land holding	65
A11	Agriculture activities not referred to above	65
B01	Forest planting on open ground	65
B02	Forest and Plantation management & use	65
B03	Forest exploitation without replanting or natural regrowth	65
B04	Use of biocides, hormones and chemicals (forestry)	65
B06	Grazing in forests/ woodland	65
B07	Forestry activities not referred to above	65
C01	Mining and quarrying	65
C02	Exploration and extraction of oil or gas	65
C03	Renewable abiotic energy use	65
D01	Roads, paths and railroads	65
D02	Utility and service lines	65
D03	Shipping lanes, ports, marine constructions	65
D04	Airports, flightpaths	65
D05	Improved access to site	65
E01	Urbanised areas, human habitation	65
E02	Industrial or commercial areas	65

CODE	DESCRIPTION	PAGE NO
E03	Discharges	65
E04	Structures, buildings in the landscape	65
E06	Other urbanisation, industrial and similar activities	65
F01	Marine and Freshwater Aquaculture	65
F02	Fishing and harvesting aquatic resources	65
F03	Hunting and collection of wild animals (terrestrial), including damage caused by game (excessive density), and taking/removal of terrestrial animals (including collection of insects, reptiles, amphibians, birds of prey, etc., trapping, poisoning, poaching, predator control, accidental capture (e.g. due to fishing gear), etc.)	65
F04	Taking / Removal of terrestrial plants, general	65
F05	Illegal taking/ removal of marine fauna	65
F06	Hunting, fishing or collecting activities not referred to above	65
G01	Outdoor sports and leisure activities, recreational activities	65
G02	Sport and leisure structures	65
G03	Interpretative centres	65
G04	Military use and civil unrest	65
G05	Other human intrusions and disturbances	65
H01	Pollution to surface waters (limnic & terrestrial, marine & brackish)	65
H02	Pollution to groundwater (point sources and diffuse sources)	65
H03	Marine water pollution	65
H04	Air pollution, air-borne pollutants	65
H05	Soil pollution and solid waste (excluding discharges)	65
H06	Excess energy	65
H07	Other forms of pollution	65
I01	Invasive non-native species	65
I02	Problematic native species	65
I03	Introduced genetic material, GMO	65
J01	Fire and fire suppression	65
J02	Human induced changes in hydraulic conditions	65
J03	Other ecosystem modifications	65
K01	Abiotic (slow) natural processes	65
K02	Biocenotic evolution, succession	65
K03	Interspecific faunal relations	65
K04	Interspecific floral relations	65
K05	Reduced fecundity/ genetic depression	65
L05	Collapse of terrain, landslide	65
L07	Storm, cyclone	65
L08	Inundation (natural processes)	65
L10	Other natural catastrophes	65
M01	Changes in abiotic conditions	65
M02	Changes in biotic conditions	65
U	Unknown threat or pressure	65
XO	Threats and pressures from outside the Member State	65

5.1 Designation type codes

CODE	DESCRIPTION	PAGE NO
UK00	No Protection Status	67
UK01	National Nature Reserve	67
UK04	Site of Special Scientific Interest (GB)	67
UK05	Marine Conservation Zone	67
UK06	Nature Conservation Marine Protected Area	67
UK86	Special Area (Channel Islands)	67
UK98	Area of Special Scientific Interest (NI)	67
IN00	Ramsar Convention site	67
IN08	Special Protection Area	67
IN09	Special Area of Conservation	67

STANDARD DATA FORM for sites within the 'UK national site network of European sites'

Special Protection Areas (SPAs) are classified and Special Areas of Conservation (SACs) are designated under:

- the Conservation of Habitats and Species Regulations 2017 (as amended) in England and Wales (including the adjacent territorial sea) and to a limited extent in Scotland (reserved matters) and Northern Ireland (excepted matters);
- the Conservation (Natural Habitats &c.) Regulations 1994 (as amended) in Scotland;
- the Conservation (Natural Habitats, &c) Regulations (Northern Ireland) 1995 (as amended) in Northern Ireland; and
- the Conservation of Offshore Marine Habitats and Species Regulations 2017 (as amended) in the UK offshore area.

Each SAC or SPA (forming part of the UK national site network of European sites) has its own Standard Data Form containing site-specific information. The information provided here generally follows the same documenting format for SACs and SPAs, as set out in the [Official Journal of the European Union recording the Commission Implementing Decision of 11 July 2011 \(2011/484/EU\)](#).

Please note that these forms contain a number of codes, all of which are explained either within the data forms themselves or in the end notes.

More general information on SPAs and SACs in the UK is available from the [SPA homepage](#) and [SAC homepage](#) on the JNCC website. These webpages also provide links to Standard Data Forms for all SAC and SPA sites in the UK.

<https://jncc.gov.uk/>



NATURA 2000 - STANDARD DATA FORM

For Special Protection Areas (SPA),
Proposed Sites for Community Importance (pSCI),
Sites of Community Importance (SCI) and
for Special Areas of Conservation (SAC)

SITE UK0030366

SITENAME Arun Valley

TABLE OF CONTENTS

- [1. SITE IDENTIFICATION](#)
- [2. SITE LOCATION](#)
- [3. ECOLOGICAL INFORMATION](#)
- [4. SITE DESCRIPTION](#)
- [5. SITE PROTECTION STATUS AND RELATION WITH CORINE BIOTOPES](#)
- [6. SITE MANAGEMENT](#)

1. SITE IDENTIFICATION

1.1 Type B	1.2 Site code UK0030366	Back to top
----------------------	-----------------------------------	-----------------------------

1.3 Site name

Arun Valley

1.4 First Compilation date 2011-02	1.5 Update date 2016-05
--	-----------------------------------

1.6 Respondent:

Name/Organisation: Joint Nature Conservation Committee

Address: Joint Nature Conservation Committee Monkstone House City Road Peterborough
PE1 1JY

Email:

Date site proposed as SCI: 2011-02

Date site confirmed as SCI: 2012-11

Date site designated as SAC: 2016-02

National legal reference of SAC designation:

Regulations 11 and 13-15 of the Conservation of Habitats and Species Regulations 2010
(<http://www.legislation.gov.uk/uksi/2010/490/contents/made>).

2. SITE LOCATION

[Back to top](#)

2.1 Site-centre location [decimal degrees]:

Longitude

-0.528055556

Latitude

50.91861111

2.2 Area [ha]:

487.48

2.3 Marine area [%]

0.0

2.4 Sitelength [km]:

0.0

2.5 Administrative region code and name

NUTS level 2 code

Region Name

UKJ2	Surrey, East and West Sussex
------	------------------------------

2.6 Biogeographical Region(s)

Atlantic (100.0
%)

3. ECOLOGICAL INFORMATION

[Back to top](#)

3.2 Species referred to in Article 4 of Directive 2009/147/EC and listed in Annex II of Directive 92/43/EEC and site evaluation for them

Species					Population in the site						Site assessment			
G	Code	Scientific Name	S	NP	T	Size		Unit	Cat.	D.qual.	A B C D		A B C	
						Min	Max				Pop.	Con.	Iso.	Glo.
I	4056	Anisus vorticulus			p				P	DD	C	B	C	B

- **Group:** A = Amphibians, B = Birds, F = Fish, I = Invertebrates, M = Mammals, P = Plants, R = Reptiles
- **S:** in case that the data on species are sensitive and therefore have to be blocked for any public access enter: yes
- **NP:** in case that a species is no longer present in the site enter: x (optional)
- **Type:** p = permanent, r = reproducing, c = concentration, w = wintering (for plant and non-migratory species use permanent)
- **Unit:** i = individuals, p = pairs or other units according to the Standard list of population units and codes in accordance with Article 12 and 17 reporting (see [reference portal](#))
- **Abundance categories (Cat.):** C = common, R = rare, V = very rare, P = present - to fill if data are deficient (DD) or in addition to population size information
- **Data quality:** G = 'Good' (e.g. based on surveys); M = 'Moderate' (e.g. based on partial data with some extrapolation); P = 'Poor' (e.g. rough estimation); VP = 'Very poor' (use this category only, if not even a rough estimation of the population size can be made, in this case the fields for population size can remain empty, but the field "Abundance categories" has to be filled in)

4. SITE DESCRIPTION

4.1 General site character

Habitat class	% Cover
N06	2.0
N10	95.0
N16	1.0
N07	2.0
Total Habitat Cover	100

Other Site Characteristics

1 Terrestrial: Soil & Geology: neutral,clay,alluvium,acidic,sedimentary,sandstone,sand,peat,nutrient-poor 2
 Terrestrial: Geomorphology and landscape: floodplain,lowland

4.2 Quality and importance

Anisus vorticulus for which this is considered to be one of the best areas in the United Kingdom.

4.3 Threats, pressures and activities with impacts on the site

The most important impacts and activities with high effect on the site

Negative Impacts			
Rank	Threats and pressures [code]	Pollution (optional) [code]	inside/outside [i o b]
H	J02		B

Positive Impacts			
Rank	Activities, management [code]	Pollution (optional) [code]	inside/outside [i o b]
H	A02		I
H	B02		I

Rank: H = high, M = medium, L = low

Pollution: N = Nitrogen input, P = Phosphor/Phosphate input, A = Acid input/acidification,

T = toxic inorganic chemicals, O = toxic organic chemicals, X = Mixed pollutions

i = inside, o = outside, b = both

4.5 Documentation

Conservation Objectives - the Natural England links below provide access to the Conservation Objectives (and other site-related information) for its terrestrial and inshore Natura 2000 sites, including conservation advice packages and supporting documents for European Marine Sites within English waters and for cross-border sites. See also the 'UK Approach' document for more information (link via the JNCC website).

Link(s): <http://publications.naturalengland.org.uk/category/6490068894089216>

<http://publications.naturalengland.org.uk/category/3212324>

http://jncc.defra.gov.uk/pdf/Natura2000_StandardDataForm_UKApproach_Dec2015.pdf

5. SITE PROTECTION STATUS (optional)

5.1 Designation types at national and regional level:

Code	Cover [%]	Code	Cover [%]	Code	Cover [%]
UK04	100.0				

6. SITE MANAGEMENT

6.1 Body(ies) responsible for the site management:

Organisation:	Natural England
Address:	
Email:	

6.2 Management Plan(s):

An actual management plan does exist:

<input type="checkbox"/> Yes
<input type="checkbox"/> No, but in preparation
<input checked="" type="checkbox"/> No

6.3 Conservation measures (optional)

For available information, including on Conservation Objectives, see Section 4.5.

EXPLANATION OF CODES USED IN THE SPECIAL AREA OF CONSERVATION (SAC) AND SPECIAL PROTECTION AREA (SPA) STANDARD DATA FORMS

The codes in the table below generally follow those explained in the [official European Union guidelines for the Standard Data Form](#) (also referencing the relevant page number).

1.1 Site type

CODE	DESCRIPTION	PAGE NO
A	SPA (classified Special Protection Area)	53
B	cSAC, SCI or SAC (candidate Special Area of Conservation, Site of Community Importance, designated Special Area of Conservation)	53
C	SPA area/boundary is the same as the cSAC/SCI/SAC i.e. a co-classified/designated site (Note: this situation only occurs in Gibraltar)	53

3.1 Habitat code

CODE	DESCRIPTION	PAGE NO
1110	Sandbanks which are slightly covered by sea water all the time	57
1130	Estuaries	57
1140	Mudflats and sandflats not covered by seawater at low tide	57
1150	Coastal lagoons	57
1160	Large shallow inlets and bays	57
1170	Reefs	57
1180	Submarine structures made by leaking gases	57
1210	Annual vegetation of drift lines	57
1220	Perennial vegetation of stony banks	57
1230	Vegetated sea cliffs of the Atlantic and Baltic Coasts	57
1310	Salicornia and other annuals colonizing mud and sand	57
1320	Spartina swards (<i>Spartinion maritimae</i>)	57
1330	Atlantic salt meadows (<i>Glauco-Puccinellietalia maritimae</i>)	57
1340	Inland salt meadows	57
1420	Mediterranean and thermo-Atlantic halophilous scrubs (<i>Sarcocornetea fruticosi</i>)	57
2110	Embryonic shifting dunes	57
2120	Shifting dunes along the shoreline with <i>Ammophila arenaria</i> ("white dunes")	57
2130	Fixed coastal dunes with herbaceous vegetation ("grey dunes")	57
2140	Decalcified fixed dunes with <i>Empetrum nigrum</i>	57
2150	Atlantic decalcified fixed dunes (<i>Calluno-Ulicetea</i>)	57
2160	Dunes with <i>Hippophae rhamnoides</i>	57
2170	Dunes with <i>Salix repens</i> ssp. <i>argentea</i> (<i>Salicion arenariae</i>)	57
2190	Humid dune slacks	57
21A0	Machairs (* in Ireland)	57
2250	Coastal dunes with <i>Juniperus</i> spp.	57
2330	Inland dunes with open <i>Corynephorus</i> and <i>Agrostis</i> grasslands	57
3110	Oligotrophic waters containing very few minerals of sandy plains (<i>Littorelletalia uniflorae</i>)	57
3130	Oligotrophic to mesotrophic standing waters with vegetation of the <i>Littorelletea uniflorae</i> and/or of the <i>Isoëto-Nanojuncetea</i>	57
3140	Hard oligo-mesotrophic waters with benthic vegetation of <i>Chara</i> spp.	57
3150	Natural eutrophic lakes with <i>Magnopotamion</i> or <i>Hydrocharition</i> - type vegetation	57

CODE	DESCRIPTION	PAGE NO
3160	Natural dystrophic lakes and ponds	57
3170	Mediterranean temporary ponds	57
3180	Turloughs	57
3260	Water courses of plain to montane levels with the Ranunculion fluitantis and Callitriche-Batrachion vegetation	57
4010	Northern Atlantic wet heaths with Erica tetralix	57
4020	Temperate Atlantic wet heaths with Erica ciliaris and Erica tetralix	57
4030	European dry heaths	57
4040	Dry Atlantic coastal heaths with Erica vagans	57
4060	Alpine and Boreal heaths	57
4080	Sub-Arctic Salix spp. scrub	57
5110	Stable xerothermophilous formations with Buxus sempervirens on rock slopes (Berberidion p.p.)	57
5130	Juniperus communis formations on heaths or calcareous grasslands	57
6130	Calaminarian grasslands of the Violetalia calaminariae	57
6150	Siliceous alpine and boreal grasslands	57
6170	Alpine and subalpine calcareous grasslands	57
6210	Semi-natural dry grasslands and scrubland facies on calcareous substrates (Festuco-Brometalia) (* important orchid sites)	57
6230	Species-rich Nardus grasslands, on silicious substrates in mountain areas (and submountain areas in Continental Europe)	57
6410	Molinia meadows on calcareous, peaty or clayey-silt-laden soils (Molinion caeruleae)	57
6430	Hydrophilous tall herb fringe communities of plains and of the montane to alpine levels	57
6510	Lowland hay meadows (Alopecurus pratensis, Sanguisorba officinalis)	57
6520	Mountain hay meadows	57
7110	Active raised bogs	57
7120	Degraded raised bogs still capable of natural regeneration	57
7130	Blanket bogs (* if active bog)	57
7140	Transition mires and quaking bogs	57
7150	Depressions on peat substrates of the Rhynchosporion	57
7210	Calcareous fens with Cladium mariscus and species of the Caricion davallianae	57
7220	Petrifying springs with tufa formation (Cratoneurion)	57
7230	Alkaline fens	57
7240	Alpine pioneer formations of the Caricion bicoloris-atrofuscae	57
8110	Siliceous scree of the montane to snow levels (Androsacetalia alpinae and Galeopsietalia ladani)	57
8120	Calcareous and calcshist screes of the montane to alpine levels (Thlaspietea rotundifolii)	57
8210	Calcareous rocky slopes with chasmophytic vegetation	57
8220	Siliceous rocky slopes with chasmophytic vegetation	57
8240	Limestone pavements	57
8310	Caves not open to the public	57
8330	Submerged or partially submerged sea caves	57
9120	Atlantic acidophilous beech forests with Ilex and sometimes also Taxus in the shrublayer (Quercion robori-petraeae or Ilici-Fagenion)	57
9130	Asperulo-Fagetum beech forests	57
9160	Sub-Atlantic and medio-European oak or oak-hornbeam forests of the Carpinion betuli	57
9180	Tilio-Acerion forests of slopes, screes and ravines	57
9190	Old acidophilous oak woods with Quercus robur on sandy plains	57
91A0	Old sessile oak woods with Ilex and Blechnum in the British Isles	57
91C0	Caledonian forest	57
91D0	Bog woodland	57
91E0	Alluvial forests with Alnus glutinosa and Fraxinus excelsior (Alno-Padion, Alnion incanae, Salicion albae)	57
91J0	Taxus baccata woods of the British Isles	57

3.1 Habitat representativity (abbreviated to 'Representativity' in data form)

CODE	DESCRIPTION	PAGE NO
A	Excellent representativity	57
B	Good representativity	57
C	Significant representativity	57
D	Non-significant presence representativity	57

3.1 Relative surface

CODE	DESCRIPTION	PAGE NO
A	> 15%-100%	58
B	> 2%-15%	58
C	≤ 2%	58

3.1 Degree of conservation (abbreviated to 'Conservation' in data form)

CODE	DESCRIPTION	PAGE NO
A	Excellent conservation	59
B	Good conservation	59
C	Average or reduced conservation	59

3.1 Global assessment (abbreviated to 'Global' in data form)

CODE	DESCRIPTION	PAGE NO
A	Excellent value	59
B	Good value	59
C	Significant value	59

3.2 Population (abbreviated to 'Pop.' in data form)

CODE	DESCRIPTION	PAGE NO
A	> 15%-100%	62
B	> 2%-15%	62
C	≤ 2%	62
D	Non-significant population	62

3.2 Degree of conservation (abbreviated to 'Con.' in data form)

CODE	DESCRIPTION	PAGE NO
A	Excellent conservation	63
B	Good conservation	63
C	Average or reduced conservation	63

3.2 Isolation (abbreviated to 'Iso.' in data form)

CODE	DESCRIPTION	PAGE NO
A	Population (almost) Isolated	63
B	Population not-isolated, but on margins of area of distribution	63
C	Population not-isolated within extended distribution range	63

3.2 Global Grade (abbreviated to 'Glo.' or 'G.' in data form)

CODE	DESCRIPTION	PAGE NO
A	Excellent value	63
B	Good value	63
C	Significant value	63

3.3 Other species – essentially covers bird assemblage types

CODE	DESCRIPTION	PAGE NO
WATR	Non-breeding waterbird assemblage	UK specific code
SBA	Breeding seabird assemblage	UK specific code

BBA	Breeding bird assemblage (applies only to sites classified pre 2000)	UK specific code
-----	--	------------------

4.1 Habitat class code

CODE	DESCRIPTION	PAGE NO
N01	Marine areas, Sea inlets	65
N02	Tidal rivers, Estuaries, Mud flats, Sand flats, Lagoons (including saltwork basins)	65
N03	Salt marshes, Salt pastures, Salt steppes	65
N04	Coastal sand dunes, Sand beaches, Machair	65
N05	Shingle, Sea cliffs, Islets	65
N06	Inland water bodies (Standing water, Running water)	65
N07	Bogs, Marshes, Water fringed vegetation, Fens	65
N08	Heath, Scrub, Maquis and Garrigue, Phygrana	65
N09	Dry grassland, Steppes	65
N10	Humid grassland, Mesophile grassland	65
N11	Alpine and sub-Alpine grassland	65
N14	Improved grassland	65
N15	Other arable land	65
N16	Broad-leaved deciduous woodland	65
N17	Coniferous woodland	65
N19	Mixed woodland	65
N21	Non-forest areas cultivated with woody plants (including Orchards, groves, Vineyards, Dehesas)	65
N22	Inland rocks, Scree, Sands, Permanent Snow and ice	65
N23	Other land (including Towns, Villages, Roads, Waste places, Mines, Industrial sites)	65
N25	Grassland and scrub habitats (general)	65
N26	Woodland habitats (general)	65

4.3 Threats code

CODE	DESCRIPTION	PAGE NO
A01	Cultivation	65
A02	Modification of cultivation practices	65
A03	Mowing / cutting of grassland	65
A04	Grazing	65
A05	Livestock farming and animal breeding (without grazing)	65
A06	Annual and perennial non-timber crops	65
A07	Use of biocides, hormones and chemicals	65
A08	Fertilisation	65
A10	Restructuring agricultural land holding	65
A11	Agriculture activities not referred to above	65
B01	Forest planting on open ground	65
B02	Forest and Plantation management & use	65
B03	Forest exploitation without replanting or natural regrowth	65
B04	Use of biocides, hormones and chemicals (forestry)	65
B06	Grazing in forests/ woodland	65
B07	Forestry activities not referred to above	65
C01	Mining and quarrying	65
C02	Exploration and extraction of oil or gas	65
C03	Renewable abiotic energy use	65
D01	Roads, paths and railroads	65
D02	Utility and service lines	65
D03	Shipping lanes, ports, marine constructions	65
D04	Airports, flightpaths	65
D05	Improved access to site	65
E01	Urbanised areas, human habitation	65
E02	Industrial or commercial areas	65

CODE	DESCRIPTION	PAGE NO
E03	Discharges	65
E04	Structures, buildings in the landscape	65
E06	Other urbanisation, industrial and similar activities	65
F01	Marine and Freshwater Aquaculture	65
F02	Fishing and harvesting aquatic resources	65
F03	Hunting and collection of wild animals (terrestrial), including damage caused by game (excessive density), and taking/removal of terrestrial animals (including collection of insects, reptiles, amphibians, birds of prey, etc., trapping, poisoning, poaching, predator control, accidental capture (e.g. due to fishing gear), etc.)	65
F04	Taking / Removal of terrestrial plants, general	65
F05	Illegal taking/ removal of marine fauna	65
F06	Hunting, fishing or collecting activities not referred to above	65
G01	Outdoor sports and leisure activities, recreational activities	65
G02	Sport and leisure structures	65
G03	Interpretative centres	65
G04	Military use and civil unrest	65
G05	Other human intrusions and disturbances	65
H01	Pollution to surface waters (limnic & terrestrial, marine & brackish)	65
H02	Pollution to groundwater (point sources and diffuse sources)	65
H03	Marine water pollution	65
H04	Air pollution, air-borne pollutants	65
H05	Soil pollution and solid waste (excluding discharges)	65
H06	Excess energy	65
H07	Other forms of pollution	65
I01	Invasive non-native species	65
I02	Problematic native species	65
I03	Introduced genetic material, GMO	65
J01	Fire and fire suppression	65
J02	Human induced changes in hydraulic conditions	65
J03	Other ecosystem modifications	65
K01	Abiotic (slow) natural processes	65
K02	Biocenotic evolution, succession	65
K03	Interspecific faunal relations	65
K04	Interspecific floral relations	65
K05	Reduced fecundity/ genetic depression	65
L05	Collapse of terrain, landslide	65
L07	Storm, cyclone	65
L08	Inundation (natural processes)	65
L10	Other natural catastrophes	65
M01	Changes in abiotic conditions	65
M02	Changes in biotic conditions	65
U	Unknown threat or pressure	65
XO	Threats and pressures from outside the Member State	65

5.1 Designation type codes

CODE	DESCRIPTION	PAGE NO
UK00	No Protection Status	67
UK01	National Nature Reserve	67
UK04	Site of Special Scientific Interest (GB)	67
UK05	Marine Conservation Zone	67
UK06	Nature Conservation Marine Protected Area	67
UK86	Special Area (Channel Islands)	67
UK98	Area of Special Scientific Interest (NI)	67
IN00	Ramsar Convention site	67
IN08	Special Protection Area	67
IN09	Special Area of Conservation	67

COUNTY: WEST SUSSEX

SITE NAME: ST LEONARD'S PARK PONDS

DISTRICT: HORSHAM

Status: Site of Special Scientific Interest (SSSI) notified under Section 28 of the Wildlife and Countryside Act 1981.

Local Planning Authority: HORSHAM DISTRICT COUNCIL

National Grid Reference: TQ 200308 Area: 4 (ha.) 9.9 (ac.)

Ordnance Survey Sheet 1:50,000: 187 1:10,000: TQ 13 SE & TQ 23 SW

Date Notified (Under 1949 Act): 1954 Date of Last Revision: 1980

Date Notified (Under 1981 Act): 1986 Date of Last Revision: –

Further Information:

This SSSI was formerly known as St Leonard's House Ponds.

Reasons for Notification:

These species-rich ponds lie along a wooded stream, located 1km east of Horsham on the Hastings Beds (Upper Grinstead Clay and Upper Tunbridge Wells Sand). The broad fringe of fen and marginal vegetation surrounding the ponds support diverse botanical communities and a number of uncommon species occur at Dry Pond. The ponds and adjacent woodland provide habitat for a diverse range of Odonata (dragonflies and damselflies), including several rare species.

The woodlands are dominated by downy birch *Betula pubescens* and alder *Alnus glutinosa*. Other tree species include silver birch *B. pendula*, ash *Fraxinus excelsior* and sweet chestnut *Castanea sativa*. The shrub layer is dominated by rhododendron *Rhododendron ponticum*, although holly *Ilex aquifolium*, hazel *Corylus avellana* and elder *Sambucus nigra* also occur. The ground flora consists largely of bramble *Rubus fruticosus*, honeysuckle *Lonicera periclymenum* and bracken *Pteridium aquilinum*. In some areas the woodland grades into carr, with grey willow *Salix cinerea*, over a ground-flora of hemlock water-dropwort *Oenanthe crocata*, marsh thistle *Cirsium palustre* and velvet bent grass *Agrostis canina*.

The fen surrounding the ponds includes species such as reed sweet-grass *Glyceria maxima*, marsh pennywort *Hydrocotyle vulgaris* and the locally uncommon shoreweed *Littorella uniflora* and floating club-rush *Eleocharis fluitans*. The nationally rare yellow centaury *Cicendia filiformis* is known to occur on the site, favouring disturbed soil. Stew pond adds to the diversity of the fen vegetation with a stand of reedmace *Typha latifolia* and common club-rush *Schoenoplectus lacustris*. A number of uncommon bryophytes (mosses and liverworts) have been recorded in Dry pond including the rare moss *Nanomitrium tenerum* which grows on the mud of the pool when it is dry.

The open water areas are dominated by broad-leaved pondweed *Potamogeton natans*, with white water-lily *Nymphaea alba* and unbranched bur-reed *Sparganium emersum*.

The site supports a wide range of dragonflies including the uncommon variable damselfly *Coenagrion pulchellum*, while the ruddy darter *Sympetrum sanguineum*, a species which is dependent on fen vegetation is also present. The woodland shading some of the ponds adds to the species diversity by providing habitat for the downy emerald *Cordulia aenea* and brilliant emerald *Somatochlora metallica* dragonflies.

COUNTY: WEST SUSSEX

SITE NAME: ST LEONARD'S FOREST

DISTRICT: HORSHAM

Status: Site of Special Scientific Interest (SSSI) notified under Section 28 of the wildlife and Countryside Act 1981.

Local Planning Authority: HORSHAM DISTRICT COUNCIL

National Grid Reference: TQ 230295 Area: 84.5 (ha.) 208.8 (ac.)

Ordnance Survey Sheet 1:50,000: 187 1:10,000: TQ 22 NW, TQ 23 SE & SW

Date Notified (Under 1949 Act): 1954 Date of Last Revision: 1980

Date Notified (Under 1981 Act): 1987 Date of Last Revision: –

Other Information:

The SSSI is a Forest Conservation Area owned by the Forestry Commission, while parts of the site are managed by the Sussex Trust for Nature Conservation. Large areas have been deleted from the former boundary.

Reasons for Notification:

This site includes the remnants of a formerly more extensive deciduous forest on the Tunbridge Wells Sands (Hastings Beds) 3km east of Horsham. Examples of high forest remain and the ground vegetation is still varied, and the streams which cross the site retain relict flora from the 'Atlantic' period of some 5000 years ago. The woodland bird population is varied, and includes some of the more local species of old woodlands. The woodlands also support a population of the purple emperor *Apatura iris*, a butterfly with a restricted British distribution.

Much of the deciduous woodland is dominated by pedunculate oak *Quercus robur* with silver birch *Betula pendula*, common birch *B. pubescens* and beech *Fagus sylvatica*. The shrub layer includes holly *Ilex aquifolium* and hazel *Corylus avellana* with hawthorn *Crataegus monogyna*, blackthorn *Prunus spinosa* and guelder rose *Viburnum populus*. Also included in the site are areas of conifer plantation, largely consisting of Scots pine *Pinus sylvestris* and Corsican pine *P. nigra*.

The ground flora of the deciduous woodland is dominated by bracken *Pteridium aquilinum*, bramble *Rubus fruticosus* and honeysuckle *Lonicera periclymenum*, with bluebell *Endymion non-scriptus*, primrose *Primula vulgaris* and common violet *Viola riviniana*. At Lilybeds there is a large colony of wild Lily-of-the-valley *Convallaria majalis*. In the more open areas of woodland, and along the rides in the plantations, species characteristic of heathland occur including ling *Calluna vulgaris*, cross-leaved heath *Erica tetralix* and ivy-leaved bellflower *Wahlenbergia hederacea*.

The humid microclimate of sheepwash gill has enabled the 'atlantic' bryophytes (mosses and liverworts) *Hookeria lucens*, and *Hyoconium flagellare* to survive. The presence of these plants indicate the continuity of woodland cover at this site for the past 5000 years. The damp areas adjacent to the gills have stands of alder *Alnus glutinosa* with common sallow *Salix cinerea*. Along the edge of Hawkins pond damp woodlands grade through alder and willow carr to emergent vegetation dominated by reedmace *Typha latifolia* with water plantain *Alisma plantago-aquatica*, bulrush *Schoenoplectus lacustris* and bladder sedge *Carex vesicaria*. Hawkins pond itself is largely free of floating vegetation although in the shallow areas there are rafts of broad-leaved pondweed *Potamogeton natans*, yellow water lily *Nuphar lutea* and water crowfoot *Ranunculus peltatus*. The rare moss *Micromitrium tenerum* has been recorded on patches of drying mud, while the rare liverwort *Riccia huebeneriana* also occurs in the pond.

The woodlands support populations of the rare purple emperor butterfly *Apatura iris* and a diversity of woodland breeding birds including all three British woodpeckers, nightjar, redstart and wood warbler.