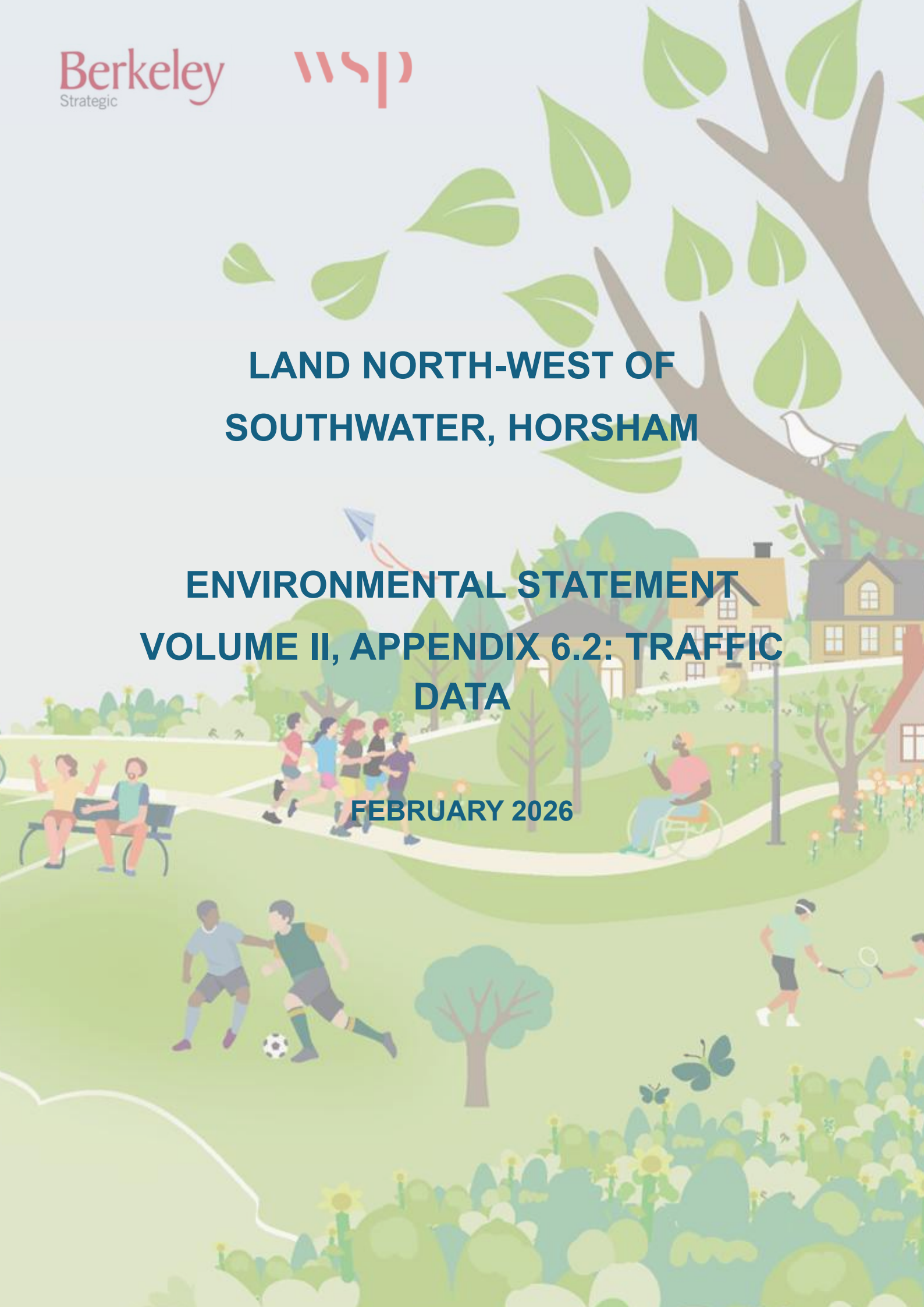


**LAND NORTH-WEST OF  
SOUTHWATER, HORSHAM**

**ENVIRONMENTAL STATEMENT  
VOLUME II, APPENDIX 6.2: TRAFFIC  
DATA**

**FEBRUARY 2026**





# CONTENTS

---

## 6.2 TRAFFIC DATA

---

1

## 6.2 TRAFFIC DATA

Table 6-2- 1: 2024 Baseline

Link ID	AADT	% HGV	Speed (kph)
3742-3678-B	1940	0.0	62.2
3758-3678-F	1260	0.7	28.5
3846-3742	1157	0.0	49.0
8287-3758-C	9733	1.4	22.9
3768-3758-B	2698	0.0	28.4
3908-3768-1	8869	0.5	47.1
3820-3814	7819	1.0	66.7
3916-3816-1	14256	3.2	61.3
3818-3814	22339	2.4	66.7
8287-3818	11138	1.0	51.2
3824-3820	23754	2.1	66.7
3822-3818	17340	2.8	66.7
3828-3824	19044	2.4	66.7
3834-3824	4954	1.1	21.7
3832-3828	26224	2.0	66.7
8270-3832-C	19335	2.3	104.9
3832-3822	6892	1.0	66.7
3890-3834-B	12135	1.1	61.4
3834-3828	7181	1.1	66.7
3854-3844	2631	0.9	53.6
3854-3846-1	1539	0.0	57.8
3890-3846	2684	0.0	28.2
3892-3854	1104	2.1	49.9
3918-3892	2663	0.9	44.6
3914-3908	17016	0.6	45.2
3928-3914	15479	0.5	49.7
3918-3916	14256	3.2	61.5
3934-3928	13110	0.4	49.4



Link ID	AADT	% HGV	Speed (kph)
4028-4020-R	17965	1.4	20.0
4022-4020-R	9157	1.9	20.0
8204-4022	10002	0.6	61.5
4026-4022-R	19158	1.2	20.0
4036-4028-R	20079	1.2	20.0
4032-4026-R	12224	0.3	20.0
4044-4036-R	13852	0.6	20.0
4042-4032-R	17817	0.9	20.0
4044-4042-R	17545	1.0	20.0
8341-4084	18582	3.1	99.2
8216-8200-R	23191	1.9	20.0
8211-8201-R	0	0.0	20.0
8212-8201	3724	4.2	41.5
8206-8202	11575	2.6	101.7
8210-8202	7760	2.0	51.0
8356-8203	14649	3.1	99.9
8204-8200	19467	1.4	63.4
8205-8203	9118	3.9	101.6
8205-8204	9465	2.3	38.5
8342-8206	20633	2.3	100.1
8207-8206	9058	2.0	113.7
8207-4020	8808	0.8	68.4
8208-8201-R	3724	4.2	20.0
8208-8207	17865	1.4	56.6
8209-8208-R	21590	1.9	20.0
8210-8209-R	20307	2.0	20.0
8211-8210-R	13492	1.8	20.0
8212-8200-R	3724	4.2	20.0
8213-8212-R	0	0.0	20.0
8213-8211	13492	1.8	41.5
8214-8203	5532	1.8	51.9



Link ID	AADT	% HGV	Speed (kph)
8214-8213-R	13492	1.8	20.0
8215-8214-R	19023	1.8	20.0
8216-8215-R	2759	0.3	20.0
8270-8202	19335	2.3	100.6
8271-8205	18582	3.1	99.2
8288-3822	10448	4.0	73.2
8288-8287	4203	0.8	47.5
8289-8288	14649	3.1	109.2
8341-8271	18582	3.1	99.2
8342-4082	20633	2.3	100.1
8356-8289	14649	3.1	109.2
11019-3678	0	0.0	20.0
10219-3678-D	0	0.0	20.0
11002-3742	0	0.0	20.0
11019-3742	0	0.0	20.0
10211-3758	0	0.0	20.0
10219-3758-B	0	0.0	20.0
11002-3846	0	0.0	20.0
11000-8287	0	0.0	20.0
11000-10211-B	0	0.0	20.0
10220-10219	0	0.0	20.0
11018-10220	0	0.0	20.0
11007-10220	0	0.0	20.0
11017-11000	0	0.0	20.0
11010-11000	0	0.0	20.0
11017-11001	0	0.0	20.0
11003-11001	0	0.0	20.0
11017-11002	0	0.0	20.0
11004-11003	0	0.0	20.0
11005-11004	0	0.0	20.0
11006-11005	0	0.0	20.0



Link ID	AADT	% HGV	Speed (kph)
11007-11006	0	0.0	20.0
11020-11019	0	0.0	20.0
3758-3678-E	1260	0.7	28.5
10219-3678-C	0	0.0	20.0
3758-3678-D	1260	0.7	28.5
10219-3678-B	0	0.0	20.0
3758-3678-C	1260	0.7	28.5
10219-3678-A	0	0.0	20.0
3758-3678-B	1260	0.7	28.5
10219-3758-A	0	0.0	20.0
3768-3758-A	2698	0.0	28.4
8270-3832-B	19335	2.3	104.9
8270-3832-A	19335	2.3	104.9
4032-4008-A	5592	2.1	62.9
3890-3834-A	12135	1.1	61.4
8287-3758-B	9733	1.4	22.9
8287-3758-A	9733	1.4	22.9
3860-3816-J	8112	1.3	20.0
3916-3816-J	14256	3.2	20.0
3816-3720-J	22166	2.3	20.0
3918-3916-J	14256	3.2	20.0
3954-3918-A-J	15829	2.7	20.0
3918-3892-B-J	2663	0.9	20.0
4058-40420-J	10225	0.1	20.0
4032-4008-A-J	5592	2.1	20.0
4026-4002-J	6934	2.9	20.0
8204-4022-J	10002	0.6	20.0
8207-4020-J	8808	0.8	20.0
4028-3988-J	17335	0.5	20.0
4082-4036-J	6229	2.6	20.0
4084-4044-J	3692	2.5	20.0



Link ID	AADT	% HGV	Speed (kph)
8208-8207-J	17865	1.4	20.0
8210-8202-J	7760	2.0	20.0
8213-8211-B-J	13492	1.8	20.0
8212-8201-B-J	3724	4.2	20.0
8212-8201-A-J	3724	4.2	20.0
8213-8211-A-J	13492	1.8	20.0
8219-8216-A-J	18812	2.3	20.0
8220-8215-A-J	14770	2.3	20.0
8214-8203-J	5532	1.8	20.0
8204-8200-J	19467	1.4	20.0
3758-3678-C-J	1260	0.7	20.0
10219-3678-B-J	0	0.0	20.0
3742-3678-A-J	1940	0.0	20.0
11019-3678-B-J	0	0.0	20.0
3678-3614-J	4752	0.7	20.0
11020-11019-J	0	0.0	20.0
3742-3678-A	1940	0.0	62.2
11019-3678-A-J	0	0.0	20.0
3742-3678-B-J	1940	0.0	20.0
11019-3742-B-J	0	0.0	20.0
3742-3678-C-J	1940	0.0	20.0
11019-3742-A-J	0	0.0	20.0
3742-3712-J	1311	0.0	20.0
3846-3742-B-J	1157	0.0	20.0
11002-3742-J	0	0.0	20.0
3854-3846-B-J	1539	0.0	20.0
3890-3846-B-J	2684	0.0	20.0
3846-3742-A-J	1157	0.0	20.0
11002-3846-J	0	0.0	20.0
3892-3854-B-J	1104	2.1	20.0
3854-3844-J	2631	0.9	20.0



Link ID	AADT	% HGV	Speed (kph)
3854-3846-A-J	1539	0.0	20.0
3918-3892-A-J	2663	0.9	20.0
3892-3844-J	1559	0.0	20.0
3892-3854-A-J	1104	2.1	20.0
3890-3846-A-J	2684	0.0	20.0
3924-3890-J	14819	0.9	20.0
3890-3834-A-J	12135	1.1	20.0
8287-3758-J	9733	1.4	20.0
10211-3758-J	0	0.0	20.0
3758-3678-B-J	1260	0.7	20.0
10219-3758-A-J	0	0.0	20.0
3768-3758-A-J	2698	0.0	20.0
10220-10219-J	0	0.0	20.0
3758-3678-A	1260	0.7	28.5
3768-3758-B-J	2698	0.0	20.0
3908-3768-B-J	8869	0.5	20.0
3768-3452-J	1942	1.0	20.0
3914-3908-B-J	17016	0.6	20.0
3908-3768-A-J	8869	0.5	20.0
3908-3812-J	9632	0.6	20.0
3928-3914-B-J	15479	0.5	20.0
3914-3908-A-J	17016	0.6	20.0
3922-3914-J	7977	0.8	20.0
3934-3928-J	13110	0.4	20.0
3978-3928-J	1513	0.0	20.0
3928-3914-A-J	15479	0.5	20.0
R2	14845	2.4	20.0
10219-3758-B-J	0	0.0	20.0
3758-3678-D-J	1260	0.7	20.0
10219-3678-A-J	0	0.0	20.0
3758-3678-A-J	1260	0.7	20.0

Link ID	AADT	% HGV	Speed (kph)
R3	1260	0.7	20.0
3978-3928	1513	0.0	27.4
3922-3914	7977	0.8	36.3
3908-3812	9632	0.6	70.3
3768-3452	1942	1.0	49.2
3742-3712	1311	0.0	63.6
3678-3614	4752	0.7	26.2
3916-3694	0	0.0	62.1
3860-3816	8112	1.3	59.4
3954-3918-A	15829	2.7	61.4
3924-3890	14819	0.9	44.3
3892-3844	1559	0.0	60.5
8219-8216-A	18812	2.3	61.6
8220-8215-A	14770	2.3	64.6
4058-4042	10225	0.1	44.3
4026-4002	6934	2.9	65.4
4032-4008-B	5592	2.1	62.9
4028-3988	17335	0.5	22.9
4082-4036	6229	2.6	59.0
4084-4044	3692	2.5	61.0
11000-10211-A	0	0.0	20.0
R1	9733	1.4	20.0
8287-3758-A-J	9733	1.4	20.0
11000-10211-A-J	0	0.0	20.0
8287-3758-C-J	9733	1.4	20.0
11000-10211-B-J	0	0.0	20.0
3816-3720	22166	2.3	57.7
3908-3768-2	8869	0.5	47.1
3854-3846-2	1539	0.0	57.8
3916-3816-2	14256	3.2	61.3

**Table 6-2-2: 2036 without Proposed Development**

Link ID	AADT	% HDV	Speed (kph)
3742-3678-B	3819	0.0	61.9
3758-3678-F	1757	0.4	28.1
3846-3742	2883	0.2	49.0
8287-3758-C	9507	0.9	20.1
3768-3758-B	5169	0.9	27.0
3908-3768-1	13509	0.9	44.1
3820-3814	8638	0.3	66.7
3916-3816-1	14740	1.1	61.3
3818-3814	27855	1.7	66.7
8287-3818	10751	0.5	50.2
3824-3820	28785	1.6	66.7
3822-3818	22564	2.1	66.7
3828-3824	24017	1.8	66.7
3834-3824	5014	0.4	4.8
3832-3828	35753	1.5	66.7
8270-3832-C	27513	1.7	98.1
3832-3822	8246	0.9	66.7
3890-3834-B	16751	0.7	57.4
3834-3828	11737	0.8	66.7
3854-3844	3450	0.8	52.9
3854-3846-1	2299	0.2	57.5
3890-3846	5045	0.2	27.6
3892-3854	1702	1.7	49.8
3918-3892	3724	0.9	44.1
3914-3908	24204	0.8	43.0
3928-3914	19864	0.6	49.6
3918-3916	15242	1.1	61.2
3934-3928	15685	0.5	49.0
4028-4020-R	25229	1.0	20.0
4022-4020-R	12383	1.4	20.0



Link ID	AADT	% HDV	Speed (kph)
8204-4022	10367	0.6	46.7
4026-4022-R	22749	1.1	20.0
4036-4028-R	24654	1.1	20.0
4032-4026-R	14052	0.3	20.0
4044-4036-R	18631	0.6	20.0
4042-4032-R	21461	0.8	20.0
4044-4042-R	23715	0.9	20.0
8341-4084	23339	1.9	97.3
8216-8200-R	29021	1.1	20.0
8211-8201-R	0	0.0	20.0
8212-8201	7183	2.2	41.5
8206-8202	14295	2.0	101.4
8210-8202	13224	1.3	48.3
8356-8203	19870	2.3	97.2
8204-8200	21678	0.7	60.3
8205-8203	12025	2.9	101.0
8205-8204	11311	0.8	37.7
8342-8206	24717	1.3	99.6
8207-8206	10421	0.2	113.9
8207-4020	12847	0.7	59.3
8208-8201-R	7183	2.2	20.0
8208-8207	23271	0.5	51.9
8209-8208-R	30460	0.9	20.0
8210-8209-R	27583	0.9	20.0
8211-8210-R	17220	0.6	20.0
8212-8200-R	7183	2.2	20.0
8213-8212-R	0	0.0	20.0
8213-8211	17220	0.6	41.5
8214-8203	7844	1.3	47.2
8214-8213-R	17220	0.6	20.0
8215-8214-R	25066	0.8	20.0



Link ID	AADT	% HDV	Speed (kph)
8216-8215-R	4336	0.4	20.0
8270-8202	27513	1.7	97.6
8271-8205	23339	1.9	97.3
8288-3822	14318	2.9	72.2
8288-8287	5555	0.6	46.5
8289-8288	19870	2.3	103.6
8341-8271	23339	1.9	97.3
8342-4082	24717	1.3	99.6
8356-8289	19870	2.3	103.6
11019-3678	0	0.0	20.0
10219-3678-D	0	0.0	20.0
11002-3742	0	0.0	20.0
11019-3742	0	0.0	20.0
10211-3758	0	0.0	20.0
10219-3758-B	0	0.0	20.0
11002-3846	0	0.0	20.0
11000-8287	0	0.0	20.0
11000-10211-B	0	0.0	20.0
10220-10219	0	0.0	20.0
11018-10220	0	0.0	20.0
11007-10220	0	0.0	20.0
11017-11000	0	0.0	20.0
11010-11000	0	0.0	20.0
11017-11001	0	0.0	20.0
11003-11001	0	0.0	20.0
11017-11002	0	0.0	20.0
11004-11003	0	0.0	20.0
11005-11004	0	0.0	20.0
11006-11005	0	0.0	20.0
11007-11006	0	0.0	20.0
11020-11019	0	0.0	20.0



Link ID	AADT	% HDV	Speed (kph)
3758-3678-E	1757	0.4	28.1
10219-3678-C	0	0.0	20.0
3758-3678-D	1757	0.4	28.1
10219-3678-B	0	0.0	20.0
3758-3678-C	1757	0.4	28.1
10219-3678-A	0	0.0	20.0
3758-3678-B	1757	0.4	28.1
10219-3758-A	0	0.0	20.0
3768-3758-A	5169	0.9	27.0
8270-3832-B	27513	1.7	98.1
8270-3832-A	27513	1.7	98.1
4032-4008-A	7405	1.7	49.5
3890-3834-A	16751	0.7	57.4
8287-3758-B	9507	0.9	20.1
8287-3758-A	9507	0.9	20.1
3860-3816-J	14272	3.1	20.0
3916-3816-J	14740	1.1	20.0
3816-3720-J	28798	2.0	20.0
3918-3916-J	15242	1.1	20.0
3954-3918-A-J	16893	0.8	20.0
3918-3892-B-J	3724	0.9	20.0
4058-40420-J	16798	0.2	20.0
4032-4008-A-J	7405	1.7	20.0
4026-4002-J	8697	2.2	20.0
8204-4022-J	10367	0.6	20.0
8207-4020-J	12847	0.7	20.0
4028-3988-J	24211	0.4	20.0
4082-4036-J	6036	2.3	20.0
4084-4044-J	5084	1.9	20.0
8208-8207-J	23271	0.5	20.0
8210-8202-J	13224	1.3	20.0



Link ID	AADT	% HDV	Speed (kph)
8213-8211-B-J	17220	0.6	20.0
8212-8201-B-J	7183	2.2	20.0
8212-8201-A-J	7183	2.2	20.0
8213-8211-A-J	17220	0.6	20.0
8219-8216-A-J	22243	1.4	20.0
8220-8215-A-J	18193	1.0	20.0
8214-8203-J	7844	1.3	20.0
8204-8200-J	21678	0.7	20.0
3758-3678-C-J	1757	0.4	20.0
10219-3678-B-J	0	0.0	20.0
3742-3678-A-J	3819	0.0	20.0
11019-3678-B-J	0	0.0	20.0
3678-3614-J	5525	0.6	20.0
11020-11019-J	0	0.0	20.0
3742-3678-A	3819	0.0	61.9
11019-3678-A-J	0	0.0	20.0
3742-3678-B-J	3819	0.0	20.0
11019-3742-B-J	0	0.0	20.0
3742-3678-C-J	3819	0.0	20.0
11019-3742-A-J	0	0.0	20.0
3742-3712-J	2165	0.0	20.0
3846-3742-B-J	2883	0.2	20.0
11002-3742-J	0	0.0	20.0
3854-3846-B-J	2299	0.2	20.0
3890-3846-B-J	5045	0.2	20.0
3846-3742-A-J	2883	0.2	20.0
11002-3846-J	0	0.0	20.0
3892-3854-B-J	1702	1.7	20.0
3854-3844-J	3450	0.8	20.0
3854-3846-A-J	2299	0.2	20.0
3918-3892-A-J	3724	0.9	20.0

Link ID	AADT	% HDV	Speed (kph)
3892-3844-J	2022	0.2	20.0
3892-3854-A-J	1702	1.7	20.0
3890-3846-A-J	5045	0.2	20.0
3924-3890-J	22525	0.5	20.0
3890-3834-A-J	16751	0.7	20.0
8287-3758-J	9507	0.9	20.0
10211-3758-J	0	0.0	20.0
3758-3678-B-J	1757	0.4	20.0
10219-3758-A-J	0	0.0	20.0
3768-3758-A-J	5169	0.9	20.0
10220-10219-J	0	0.0	20.0
3758-3678-A	1757	0.4	28.1
3768-3758-B-J	5169	0.9	20.0
3908-3768-B-J	13509	0.9	20.0
3768-3452-J	3161	1.5	20.0
3914-3908-B-J	24204	0.8	20.0
3908-3768-A-J	13509	0.9	20.0
3908-3812-J	13335	0.4	20.0
3928-3914-B-J	19864	0.6	20.0
3914-3908-A-J	24204	0.8	20.0
3922-3914-J	10872	1.2	20.0
3934-3928-J	15685	0.5	20.0
3978-3928-J	3058	0.0	20.0
3928-3914-A-J	19864	0.6	20.0
R2	19270	2.0	20.0
10219-3758-B-J	0	0.0	20.0
3758-3678-D-J	1757	0.4	20.0
10219-3678-A-J	0	0.0	20.0
3758-3678-A-J	1757	0.4	20.0
R3	1757	0.4	20.0
3978-3928	3058	0.0	25.9

Link ID	AADT	% HDV	Speed (kph)
3922-3914	10872	1.2	36.6
3908-3812	13335	0.4	69.3
3768-3452	3161	1.5	48.6
3742-3712	2165	0.0	63.6
3678-3614	5525	0.6	24.8
3916-3694	502	0.0	62.0
3860-3816	14272	3.1	57.3
3954-3918-A	16893	0.8	61.0
3924-3890	22525	0.5	39.2
3892-3844	2022	0.2	60.1
8219-8216-A	22243	1.4	43.6
8220-8215-A	18193	1.0	61.8
4058-4042	16798	0.2	39.3
4026-4002	8697	2.2	65.2
4032-4008-B	7405	1.7	49.5
4028-3988	24211	0.4	20.5
4082-4036	6036	2.3	54.0
4084-4044	5084	1.9	59.9
11000-10211-A	0	0.0	20.0
R1	9507	0.9	20.0
8287-3758-A-J	9507	0.9	20.0
11000-10211-A-J	0	0.0	20.0
8287-3758-C-J	9507	0.9	20.0
11000-10211-B-J	0	0.0	20.0
3816-3720	28798	2.0	46.0
3908-3768-2	13509	0.9	44.1
3854-3846-2	2299	0.2	57.5
3916-3816-2	14740	1.1	61.3



**Table 6-2-3: 2036 with Proposed Development**

Link ID	AADT	% HDV	Speed (kph)
3742-3678-B	0	0.0	20.0
3758-3678-F	0	0.0	20.0
3846-3742	0	0.0	20.0
8287-3758-C	0	0.0	20.0
3768-3758-B	6294	0.7	25.8
3908-3768-1	14881	0.7	41.3
3820-3814	9306	0.2	66.7
3916-3816-1	15445	1.1	61.1
3818-3814	28737	1.6	66.7
8287-3818	11490	0.4	51.6
3824-3820	29222	1.5	66.7
3822-3818	22641	2.2	66.7
3828-3824	24715	1.7	66.7
3834-3824	4692	0.6	4.8
3832-3828	36177	1.4	66.7
8270-3832-C	28043	1.6	98.1
3832-3822	8141	1.0	66.7
3890-3834-B	16155	0.8	57.6
3834-3828	11463	0.9	66.7
3854-3844	3610	0.7	53.1
3854-3846-1	4127	0.7	56.2
3890-3846	5727	0.0	27.2
3892-3854	2771	1.9	49.7
3918-3892	4847	1.2	44.6
3914-3908	25222	0.6	42.7
3928-3914	20366	0.5	49.5
3918-3916	15913	1.0	60.6
3934-3928	15938	0.4	49.0
4028-4020-R	25993	1.0	20.0
4022-4020-R	12328	1.4	20.0

Link ID	AADT	% HDV	Speed (kph)
8204-4022	10764	0.5	46.7
4026-4022-R	23092	1.0	20.0
4036-4028-R	25224	1.0	20.0
4032-4026-R	14095	0.3	20.0
4044-4036-R	19382	0.5	20.0
4042-4032-R	21942	0.7	20.0
4044-4042-R	24379	0.8	20.0
8341-4084	23520	2.0	97.3
8216-8200-R	28673	1.1	20.0
8211-8201-R	0	0.0	20.0
8212-8201	6832	2.2	41.5
8206-8202	14473	2.0	101.4
8210-8202	13577	1.1	48.3
8356-8203	20710	2.2	97.2
8204-8200	21681	0.7	60.3
8205-8203	12600	2.9	101.0
8205-8204	10917	1.0	37.7
8342-8206	24864	1.2	99.6
8207-8206	10391	0.2	113.9
8207-4020	13665	0.6	59.3
8208-8201-R	6832	2.2	20.0
8208-8207	24059	0.4	51.9
8209-8208-R	30829	0.8	20.0
8210-8209-R	27969	0.8	20.0
8211-8210-R	17263	0.6	20.0
8212-8200-R	6832	2.2	20.0
8213-8212-R	0	0.0	20.0
8213-8211	17263	0.6	41.5
8214-8203	8110	1.0	47.2
8214-8213-R	17263	0.6	20.0
8215-8214-R	25374	0.7	20.0



Link ID	AADT	% HDV	Speed (kph)
8216-8215-R	4779	0.3	20.0
8270-8202	28043	1.6	97.6
8271-8205	23520	2.0	97.3
8288-3822	14501	2.8	72.2
8288-8287	6213	0.7	46.5
8289-8288	20710	2.2	103.6
8341-8271	23520	2.0	97.3
8342-4082	24864	1.2	99.6
8356-8289	20710	2.2	103.6
11019-3678	2797	0.0	55.3
10219-3678-D	7240	0.0	23.1
11002-3742	1827	0.0	48.8
11019-3742	2741	0.0	63.6
10211-3758	7061	0.0	24.4
10219-3758-B	1923	0.0	26.0
11002-3846	5538	0.0	49.7
11000-8287	17904	0.0	10.2
11000-10211-B	12741	0.0	18.9
10220-10219	3306	0.0	25.2
11018-10220	644	0.0	30.0
11007-10220	3074	0.0	28.8
11017-11000	5178	0.0	26.7
11010-11000	1628	0.0	28.1
11017-11001	6974	0.0	33.3
11003-11001	6974	0.0	33.3
11017-11002	3944	0.0	31.0
11004-11003	6974	0.0	32.3
11005-11004	3074	0.0	33.3
11006-11005	3074	0.0	33.3
11007-11006	3074	0.0	33.3
11020-11019	75	0.0	30.0

Link ID	AADT	% HDV	Speed (kph)
3758-3678-E	0	0.0	20.0
10219-3678-C	7240	0.0	23.1
3758-3678-D	0	0.0	20.0
10219-3678-B	7240	0.0	23.1
3758-3678-C	0	0.0	20.0
10219-3678-A	7240	0.0	23.1
3758-3678-B	0	0.0	20.0
10219-3758-A	1923	0.0	26.0
3768-3758-A	6294	0.7	25.8
8270-3832-B	28043	1.6	98.1
8270-3832-A	28043	1.6	98.1
4032-4008-A	7842	1.5	49.5
3890-3834-A	16155	0.8	57.6
8287-3758-B	0	0.0	20.0
8287-3758-A	0	0.0	20.0
3860-3816-J	14189	3.1	20.0
3916-3816-J	15445	1.1	20.0
3816-3720-J	29438	1.9	20.0
3918-3916-J	15913	1.0	20.0
3954-3918-A-J	16460	0.7	20.0
3918-3892-B-J	4847	1.2	20.0
4058-40420-J	17079	0.2	20.0
4032-4008-A-J	7842	1.5	20.0
4026-4002-J	8997	2.1	20.0
8204-4022-J	10764	0.5	20.0
8207-4020-J	13665	0.6	20.0
4028-3988-J	24478	0.3	20.0
4082-4036-J	5857	2.4	20.0
4084-4044-J	4997	1.9	20.0
8208-8207-J	24059	0.4	20.0
8210-8202-J	13577	1.1	20.0



Link ID	AADT	% HDV	Speed (kph)
8213-8211-B-J	17263	0.6	20.0
8212-8201-B-J	6832	2.2	20.0
8212-8201-A-J	6832	2.2	20.0
8213-8211-A-J	17263	0.6	20.0
8219-8216-A-J	21771	1.4	20.0
8220-8215-A-J	18099	0.9	20.0
8214-8203-J	8110	1.0	20.0
8204-8200-J	21681	0.7	20.0
3758-3678-C-J	0	0.0	20.0
10219-3678-B-J	7240	0.0	20.0
3742-3678-A-J	0	0.0	20.0
11019-3678-B-J	2797	0.0	20.0
3678-3614-J	5746	0.8	20.0
11020-11019-J	75	0.0	20.0
3742-3678-A	0	0.0	20.0
11019-3678-A-J	2797	0.0	20.0
3742-3678-B-J	0	0.0	20.0
11019-3742-B-J	2741	0.0	20.0
3742-3678-C-J	0	0.0	20.0
11019-3742-A-J	2741	0.0	20.0
3742-3712-J	2190	0.0	20.0
3846-3742-B-J	0	0.0	20.0
11002-3742-J	1827	0.0	20.0
3854-3846-B-J	4127	0.7	20.0
3890-3846-B-J	5727	0.0	20.0
3846-3742-A-J	0	0.0	20.0
11002-3846-J	5538	0.0	20.0
3892-3854-B-J	2771	1.9	20.0
3854-3844-J	3610	0.7	20.0
3854-3846-A-J	4127	0.7	20.0
3918-3892-A-J	4847	1.2	20.0

Link ID	AADT	% HDV	Speed (kph)
3892-3844-J	2076	0.2	20.0
3892-3854-A-J	2771	1.9	20.0
3890-3846-A-J	5727	0.0	20.0
3924-3890-J	22575	0.5	20.0
3890-3834-A-J	16155	0.8	20.0
8287-3758-J	0	0.0	20.0
10211-3758-J	7061	0.0	20.0
3758-3678-B-J	0	0.0	20.0
10219-3758-A-J	1923	0.0	20.0
3768-3758-A-J	6294	0.7	20.0
10220-10219-J	3306	0.0	20.0
3758-3678-A	0	0.0	20.0
3768-3758-B-J	6294	0.7	20.0
3908-3768-B-J	14881	0.7	20.0
3768-3452-J	3050	0.9	20.0
3914-3908-B-J	25222	0.6	20.0
3908-3768-A-J	14881	0.7	20.0
3908-3812-J	13451	0.4	20.0
3928-3914-B-J	20366	0.5	20.0
3914-3908-A-J	25222	0.6	20.0
3922-3914-J	11044	1.0	20.0
3934-3928-J	15938	0.4	20.0
3978-3928-J	3244	0.0	20.0
3928-3914-A-J	20366	0.5	20.0
R2	19691	1.9	20.0
10219-3758-B-J	1923	0.0	20.0
3758-3678-D-J	0	0.0	20.0
10219-3678-A-J	7240	0.0	20.0
3758-3678-A-J	0	0.0	20.0
R3	4156	0.0	20.0
3978-3928	3244	0.0	25.8

Link ID	AADT	% HDV	Speed (kph)
3922-3914	11044	1.0	38.1
3908-3812	13451	0.4	69.3
3768-3452	3050	0.9	48.6
3742-3712	2190	0.0	63.6
3678-3614	5746	0.8	24.6
3916-3694	469	0.0	61.9
3860-3816	14189	3.1	57.4
3954-3918-A	16460	0.7	61.1
3924-3890	22575	0.5	39.1
3892-3844	2076	0.2	60.1
8219-8216-A	21771	1.4	43.6
8220-8215-A	18099	0.9	61.8
4058-4042	17079	0.2	39.1
4026-4002	8997	2.1	65.2
4032-4008-B	7842	1.5	49.5
4028-3988	24478	0.3	20.5
4082-4036	5857	2.4	54.0
4084-4044	4997	1.9	59.9
11000-10211-A	12741	0.0	18.9
R1	12741	0.0	20.0
8287-3758-A-J	0	0.0	20.0
11000-10211-A-J	12741	0.0	20.0
8287-3758-C-J	0	0.0	20.0
11000-10211-B-J	12741	0.0	20.0
3816-3720	29438	1.9	45.9
3908-3768-2	14881	0.7	41.3
3854-3846-2	4127	0.7	56.2
3916-3816-2	15445	1.1	61.1



WSP House  
70 Chancery Lane  
London  
WC2A 1AF

[wsp.com](http://wsp.com)