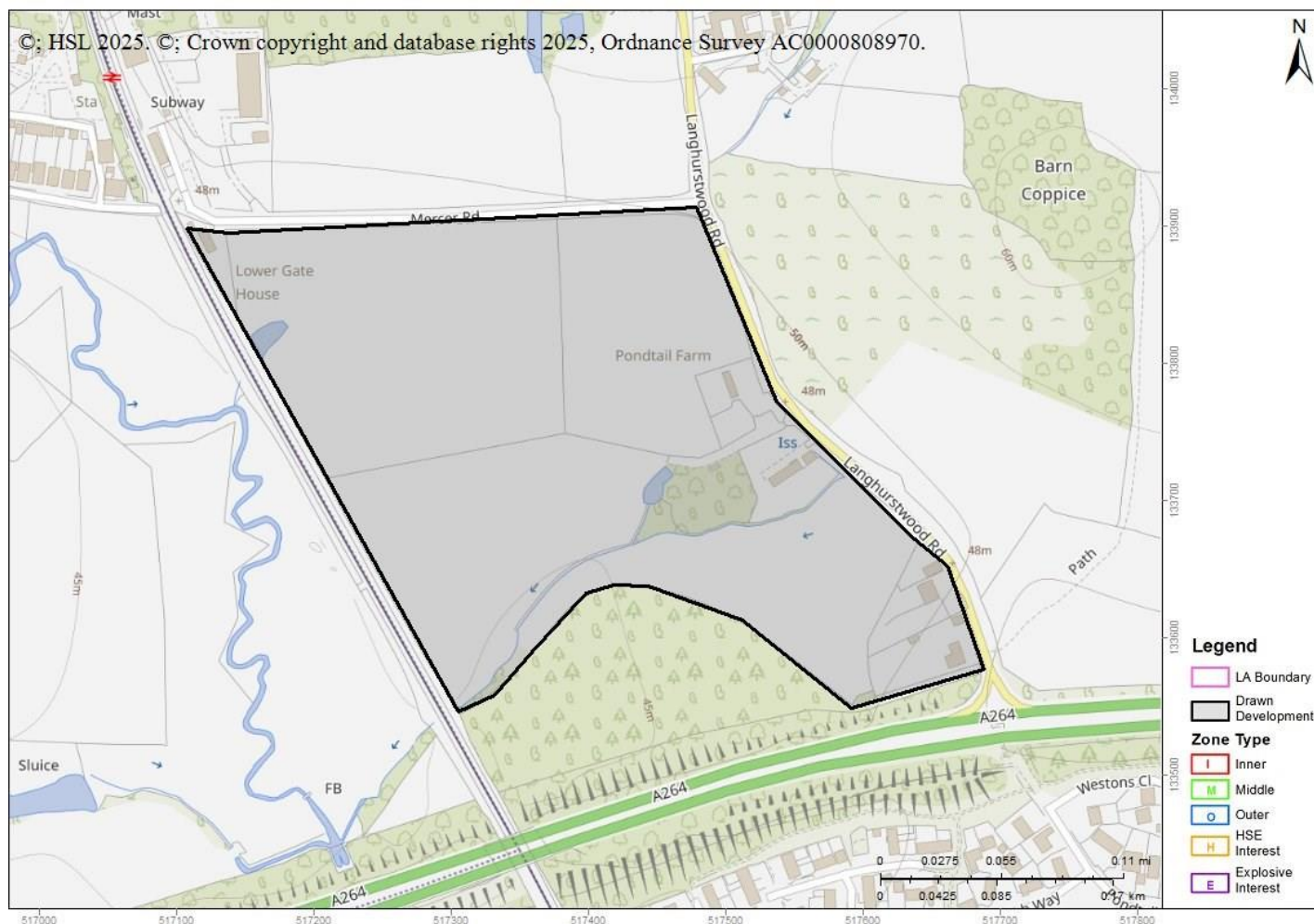


Advice : HSL-250219112638-190 Does Not Cross Any Consultation Zones

Your Ref: DC/25/0151

Development Name: Land To The North and South of Mercer Road Warnham West Sussex

Comments: Redevelopment of the site to provide 304 residential units, parking, a retail unit, public car park, public open space, attenuation basins and landscaping



The proposed development site which you have identified does not currently lie within the consultation distance (CD) of a major hazard site or major accident hazard pipeline; therefore at present HSE does not need to be consulted on any developments on this site. However, should there be a delay submitting a planning application for the proposed development on this site, you may wish to approach HSE again to ensure that there have been no changes to CDs in this area in the intervening period.

This advice report has been generated using information supplied by Stephanie Bryant at Horsham District on 19 February 2025.