

7.3 EXTERNAL LIGHTING STRATEGY

7.3.2 PROPOSED EXTERNAL LIGHTING STRATEGY

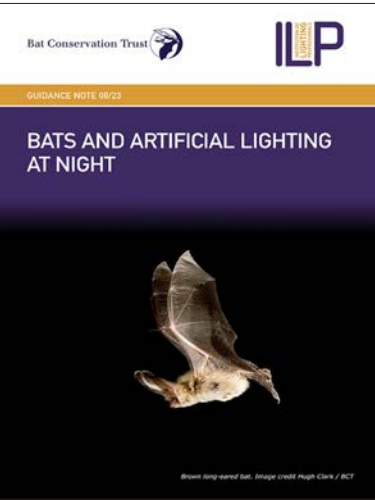
The proposed lighting is split into three categories:

- Back of house lighting
- Front of house functional lighting
- Front of house accent lighting

The proposed lighting design has been sensitively set out to follow the Institute of Lighting Professionals Guidance notes on 'Bats and Artificial Lighting at Night' dated August 23.

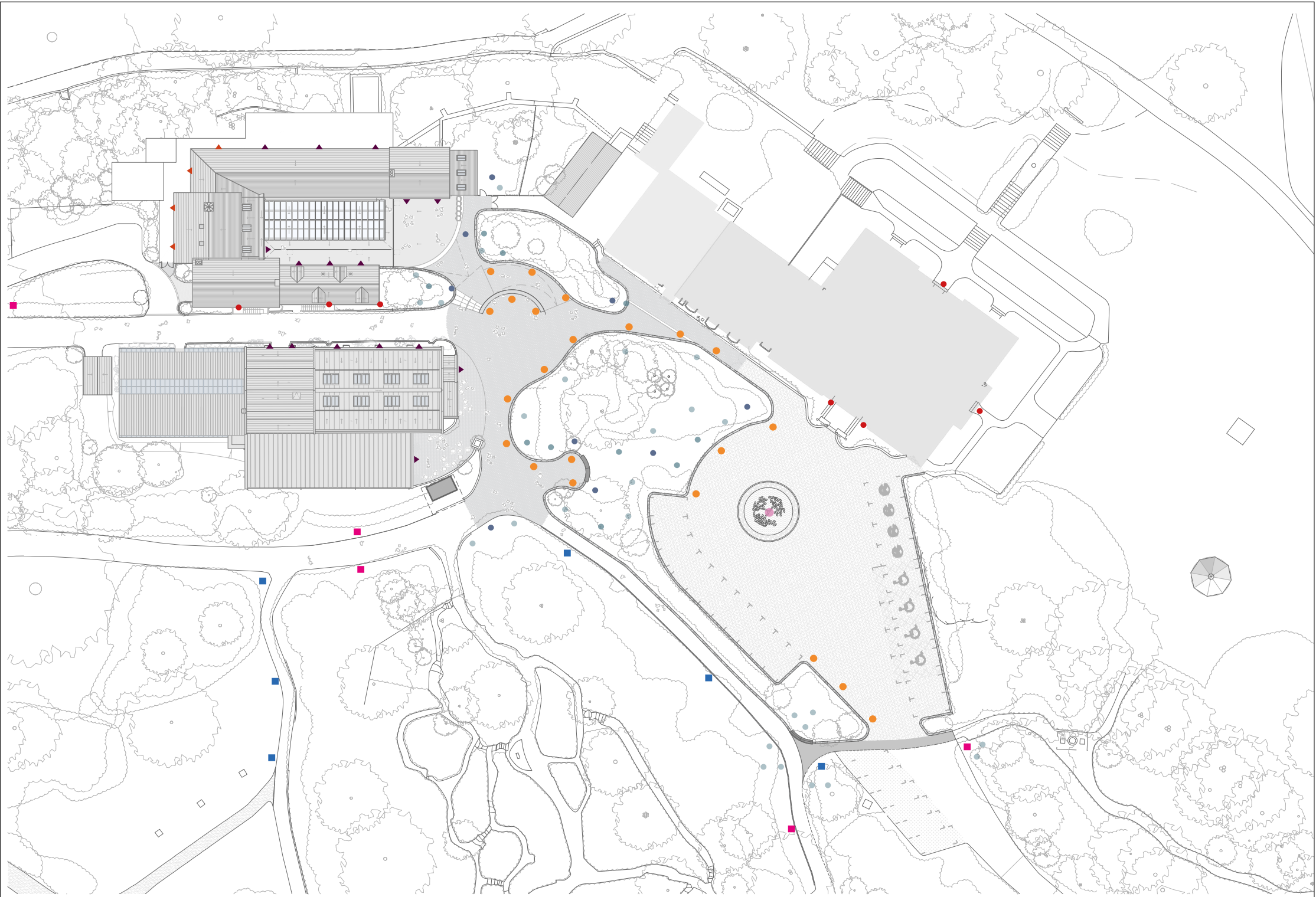
The design has taken into account mitigation measures listed in the table above to avoid impacts to bats, their roosts and their commuting and foraging habitats.

It is assumed that following any permission approvals, a detailed, ecologically sensitive lighting design strategy will be provided with exact light fittings, colour temperatures light levels to demonstrate compliance.



Cover of “Bats and Artificial Lighting at Night”

- Key:**
- Existing timber bollard mounted lights to existing paths
 - Wall-mounted traditional style lights retained
 - Timber bollard mounted lights to match existing
 - ▲ Wall-mounted lights
 - ▲ Back of house wall-mounted lights on PIR sensors
 - Pole mounted down lights for garden accents (differing heights)
 - Directional lights to light buildings
 - Floor washer lights



Proposed external lighting plan