

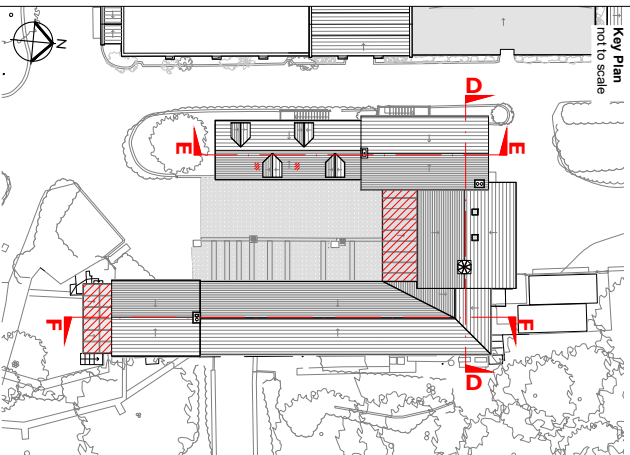
Notes:

Drawings are based on survey data and may not accurately represent what is physically present.

Do not scale from this drawing. All dimensions are to be verified on site before proceeding with the work.

All dimensions are in millimetres unless noted otherwise.

Purcell shall be notified in writing of any discrepancies.



KEY

Existing building fabric

Demolition

P03	07.07.25	JS	JC	Planning Issue
REV	DATE	BY	CHK	DESCRIPTION

CLIENT
Leonardslee Gardens

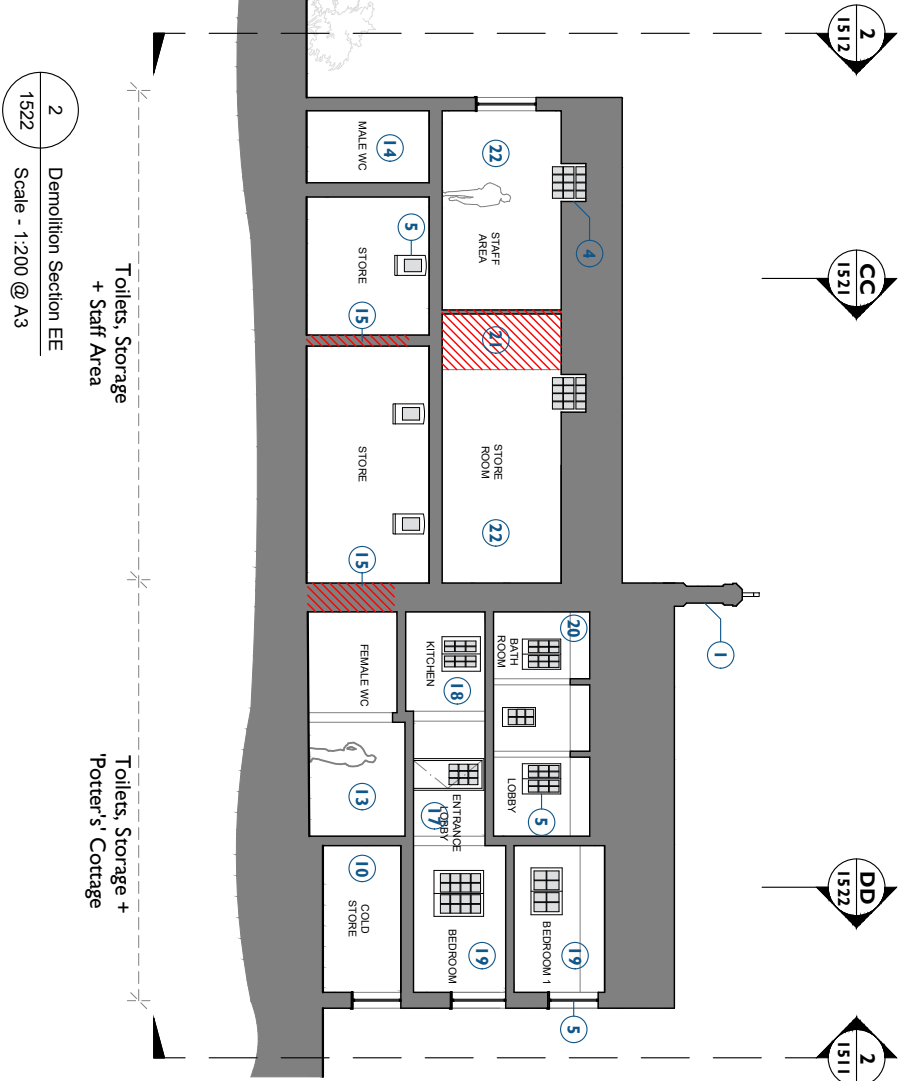
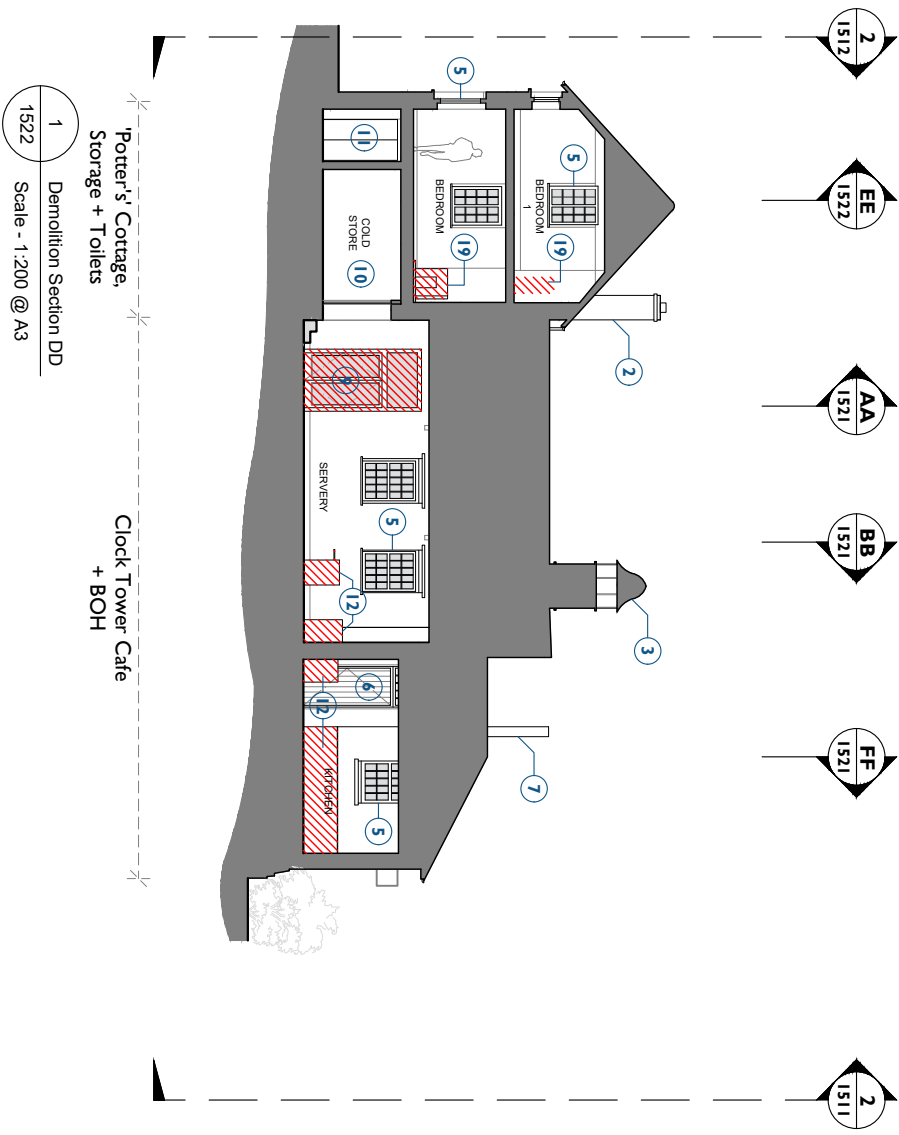
PROJECT
Leonardslee Lakes and Gardens

LOGS NUMBER
242769

PURCELL

Demolition Sections DD, EE & FF Stable Block

SIZE	SCALE
A31	1:200
ENVIRONMENTAL P03 Planning Issue	SUITABLE REASON FOR ISSUE
DRAWING NUMBER	
2424769-PUR-01 -ZZ-DR-A-1522	



- | | |
|---|--|
| <u>Stable Block Demolitions - General</u> | |
| 1 Retain stone chimney. | 16 Remove windows and wall below to allow for new larger windows. |
| 2 Retain brickwork chimney. | Historic frame to be retained and protected. |
| 3 Retain Clocktower. | |
| 4 Retain dormers. | |
| 5 Retain timber windows. | 17 Potter's Cottage Demolitions |
| 6 Retain timber doors. | 18 Retain entrance lobby. |
| 7 Retain telephone pole. | 19 Remove kitchen fittings. |
| 8 Remove modern conservatory. Historic frame to be retained and protected. | Blocked fire place in bedroom to be opened. |
| | <u>Staff Office Demolitions</u> |
| <u>Existing Stable Block - Cafe</u> | 20 Remove modern partitions for office use split with a entrance lobby. |
| 9 Removal of modern doors. | 21 Remove partitions in office. |
| 10 Retain modern refrigeration room. | 22 Retain office spaces with high level windows within high ceiling. |
| 11 Retain electrical plant. | |
| 12 Remove modern kitchen fittings. | <u>Honey Cottage Demolitions</u> |
| 13 Remove Female WC fittings. | 23 Remove door, doorleafs to be set aside. |
| 14 Remove Male WC fittings. | 24 Retain existing staircase and remove partitions, doorleafs to be set aside. |
| 15 Careful part-removal of walls to the stores within historic carriage house to create new opening adjacent to blocked historic opening. | |

