

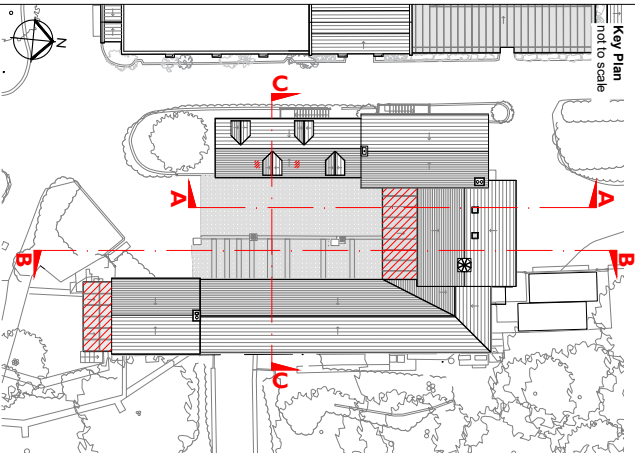
Notes:

Drawings are based on survey data and may not accurately represent what is physically present.

Do not scale from this drawing. All dimensions are to be verified on site before proceeding with the work.

All dimensions are in millimetres unless noted otherwise.

Purcell shall be notified in writing of any discrepancies.



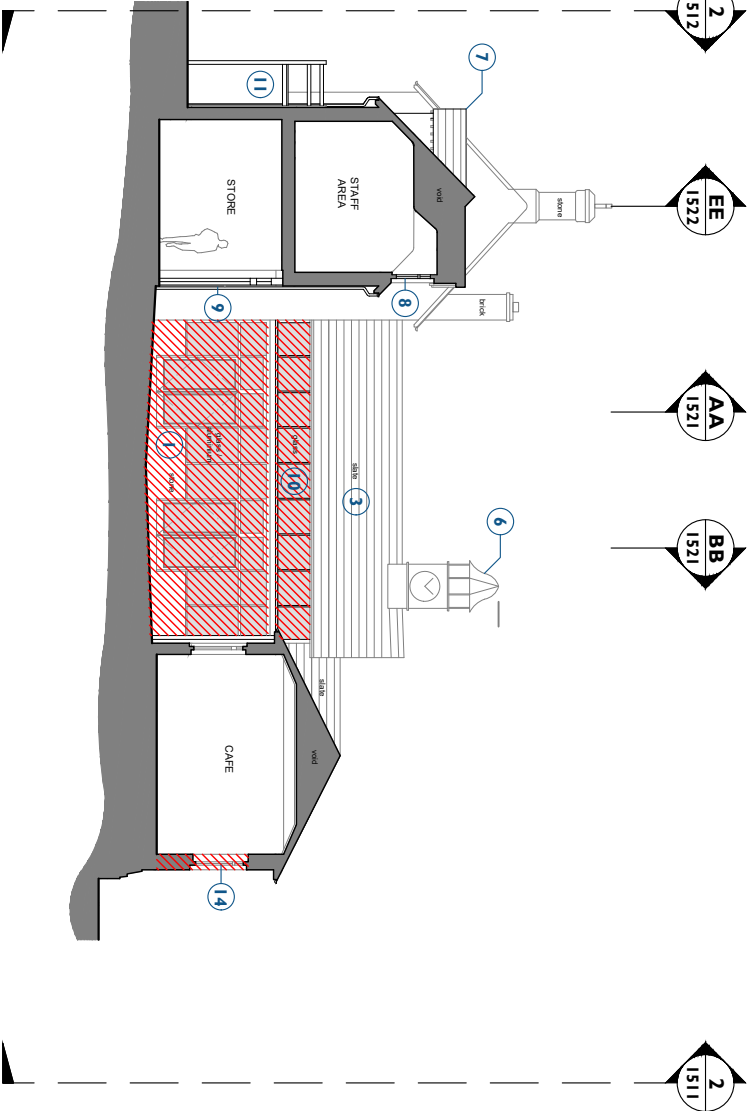
KEY

- Existing building fabric
- Demolition

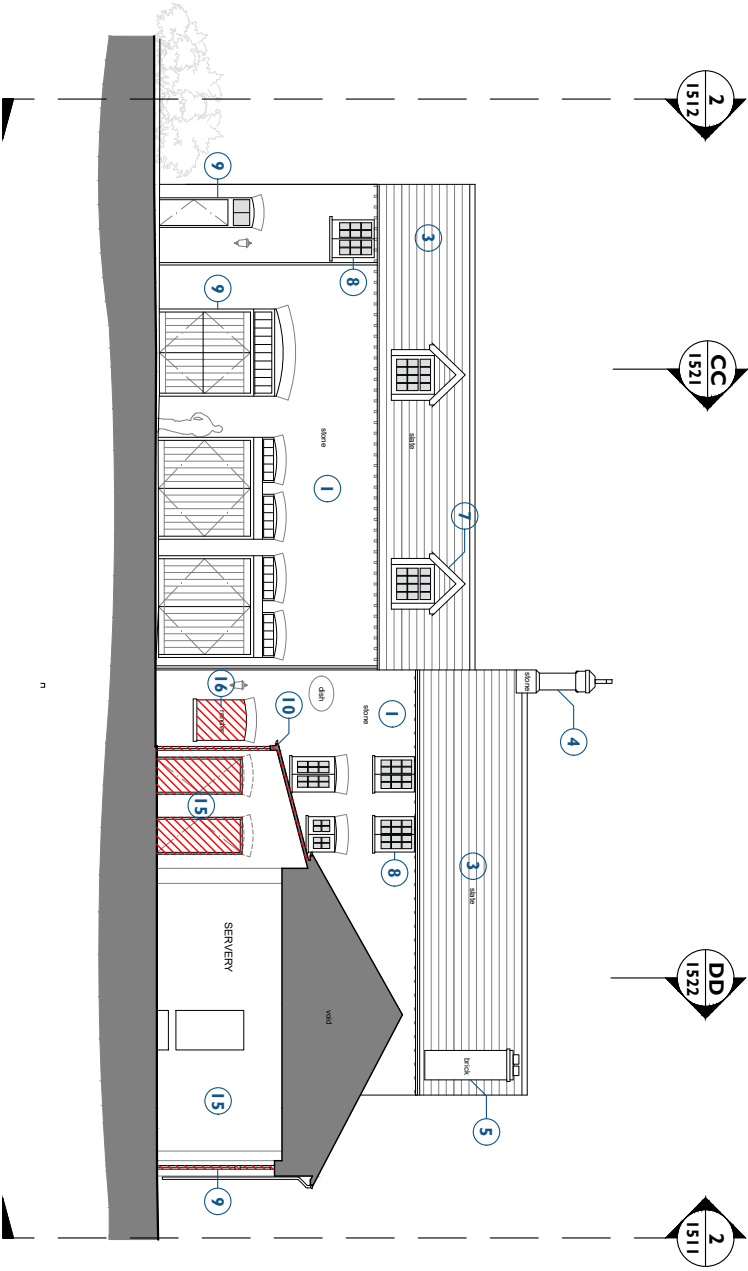
PG3	07/27/25	J.S.	J.C.	Planning Issue
REV	DATE	BY	CHK	DESCRIPTION
CLIENT				
Leonardslee Gardens				
PROJECT				
Leonardslee Lakes and Gardens				
JOB NUMBER				
242769				
PURCELL				

TITLE  
Demolition Sections AA, BB, & CC  
Stable Block

SIZE	SCALE
A3L	1:200
REV	SUBMITTAL/REASON FOR ISSUE
P03	Planning Issue
DRAWING NUMBER	
242769-PUR-01-ZZ-DR-A-1521	
PURCELL	
Purcell is the registered trademark of Purcell Architects Ltd and all subsidiary companies and is registered in the United Kingdom, European Union, Hong Kong, China and Australia. © Purcell. 2025. www.purcell.com	



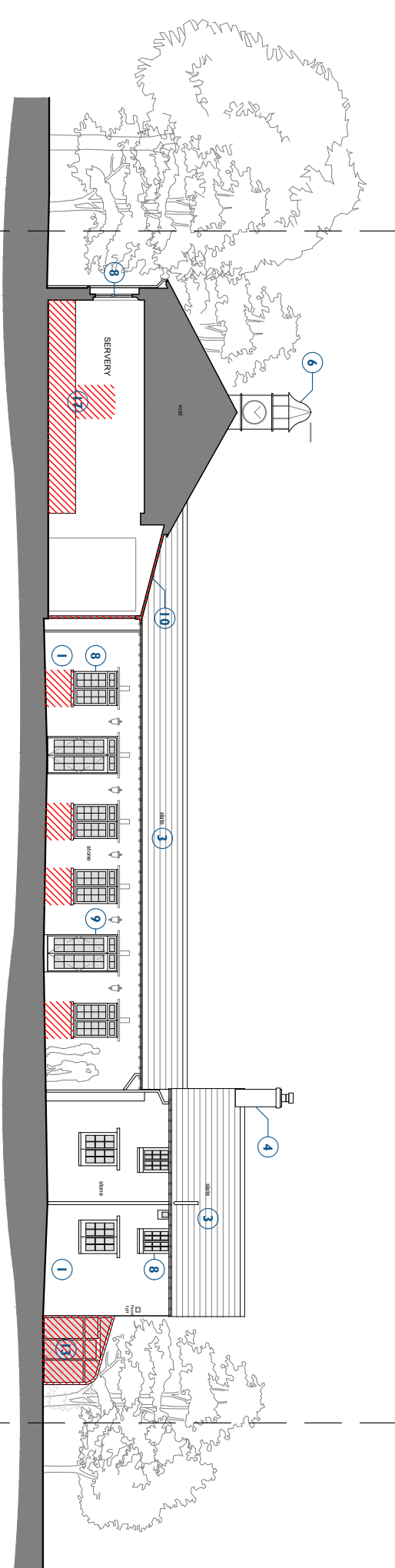
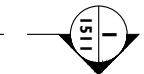
Staff Area + Storage  
Clock Tower Cafe  
Demolition Section CC  
1521  
Scale - 1:200 @ A3



Courtyard, Toilets,  
Storage + Staff Area  
Clock Tower Cafe,  
Storage + Porter's Cottage  
Demolition Section AA  
1521  
Scale - 1:200 @ A3



- Stable Block Demolitions - General
- Retain stonework.
  - Retain brickwork.
  - Retain slate roofing.
  - Retain stone chimney.
  - Retain brickwork chimney.
  - Retain Clocktower.
  - Retain dormers.
  - Retain timber windows.
  - Retain timber doors.
  - Removal of modern PVC roof and glazed entrance fixed to historic frame. Historic frame to be retained and protected.
  - Retain timber staircase.
  - Retain telephone pole.
  - Remove modern conservatory.
  - Remove windows and wall below to allow for new larger windows. Historic frame to be retained and protected.
  - Modern lobbies and doorleafs removed.
  - Infilled historic window opening unblocked.



Clock Tower Cafe  
+ Courtyard

Honey Cottage

Demolition Section BB  
1521  
Scale - 1:200 @ A3

