

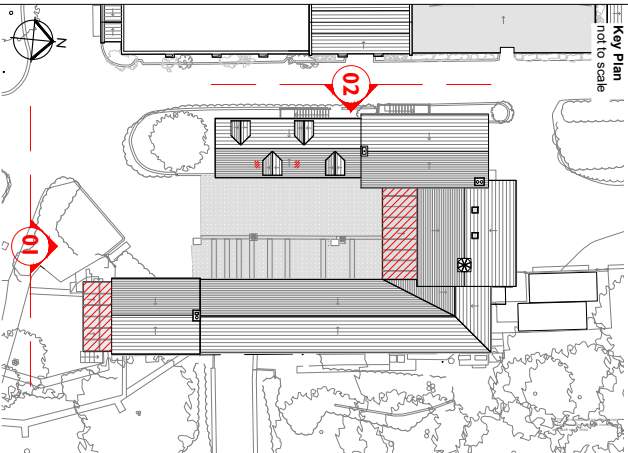
Notes:

Drawings are based on survey data and may not accurately represent what is physically present.

Do not scale from this drawing. All dimensions are to be verified on site before proceeding with the work.

All dimensions are in millimetres unless noted otherwise.

Purcell shall be notified in writing of any discrepancies.

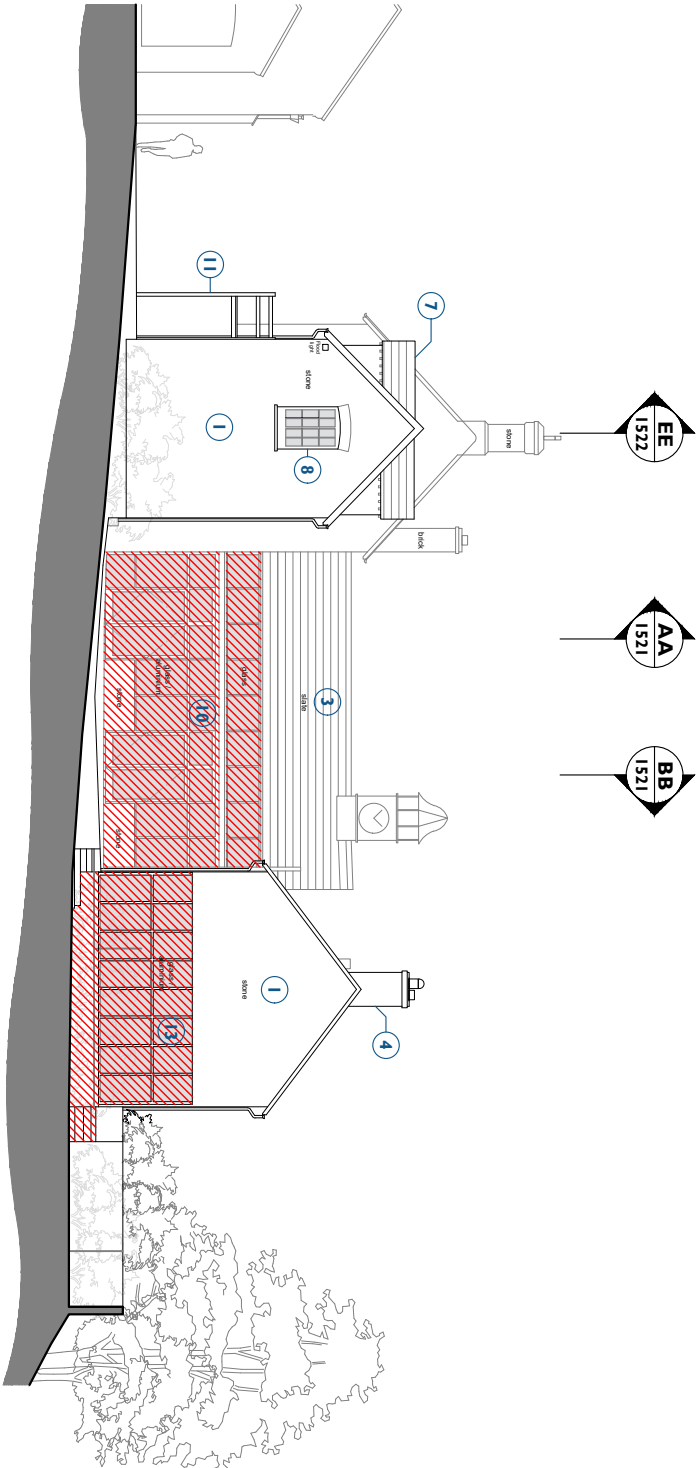


KEY

- Existing building fabric
- Demolition

Stable Block Demolitions - General

- Retain stonework.
- Retain brickwork.
- Retain slate roofing.
- Retain stone chimney.
- Retain brickwork chimney.
- Retain Clocktower.
- Retain dormers.
- Retain timber windows.
- Retain timber doors.
- Removal of modern PVC roof and glazed entrance fixed to historic frame. Historic frame to be retained and protected.
- Retain timber staircase.
- Retain telephone pole.
- Remove modern conservatory. Historic frame to be retained and protected.

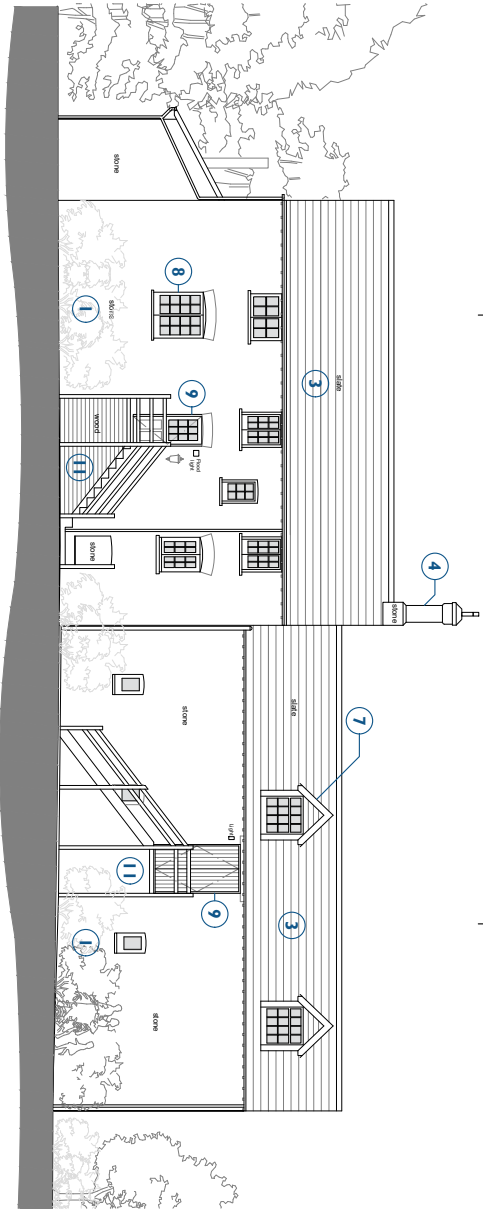


1 Demolition South Elevation
1512 Scale - 1:200 @ A3

Staff Area, Toilets + Storage

Courtyard + Clock Tower Cafe

Honey Cottage



2 Demolition West Elevation
1512 Scale - 1:200 @ A3

Poters' Cottage Flat + Storage

Staff Area, Toilets + Storage



CLIENT			
Leonardslee Gardens			
PROJECT			
Leonardslee Lakes and Gardens			
JOB NUMBER			
242769			
PURCELL			
TITLE			
Demolition South & West Elevation			
Stable Block			
SIZE SCALE			
A3L 1:200			
REV. SUBMITTAL/REASON FOR ISSUE			
P03 Planning Issue			
DRAWING NUMBER			
242769-PUR-01-ZZ-DR-A-1512			
PURCELL IS THE REGISTERED TRADE NAME FOR PURCELL ARCHITECTURE LTD AND ALL SUBSIDIARY COMPANIES AND IS REGISTERED IN THE UNITED KINGDOM, EUROPEAN UNION, HONG KONG, CHINA AND AUSTRALIA © PURCELL 2020. WWW.PURCELL.COM			