

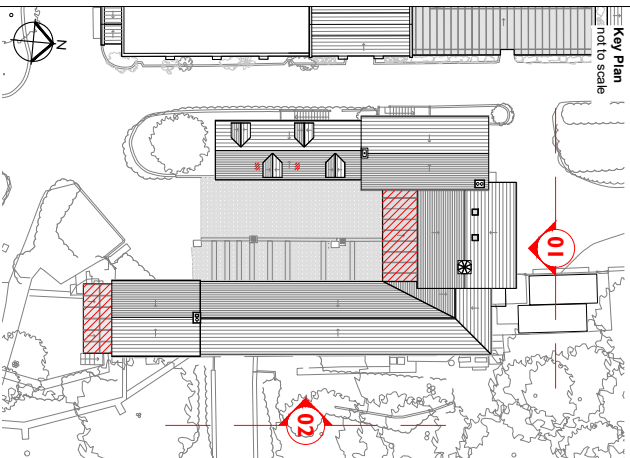
Notes:

Drawings are based on survey data and may not accurately represent what is physically present.

Do not scale from this drawing. All dimensions are to be verified on site before proceeding with the work.

All dimensions are in millimetres unless noted otherwise.

Purcell shall be notified in writing of any discrepancies.

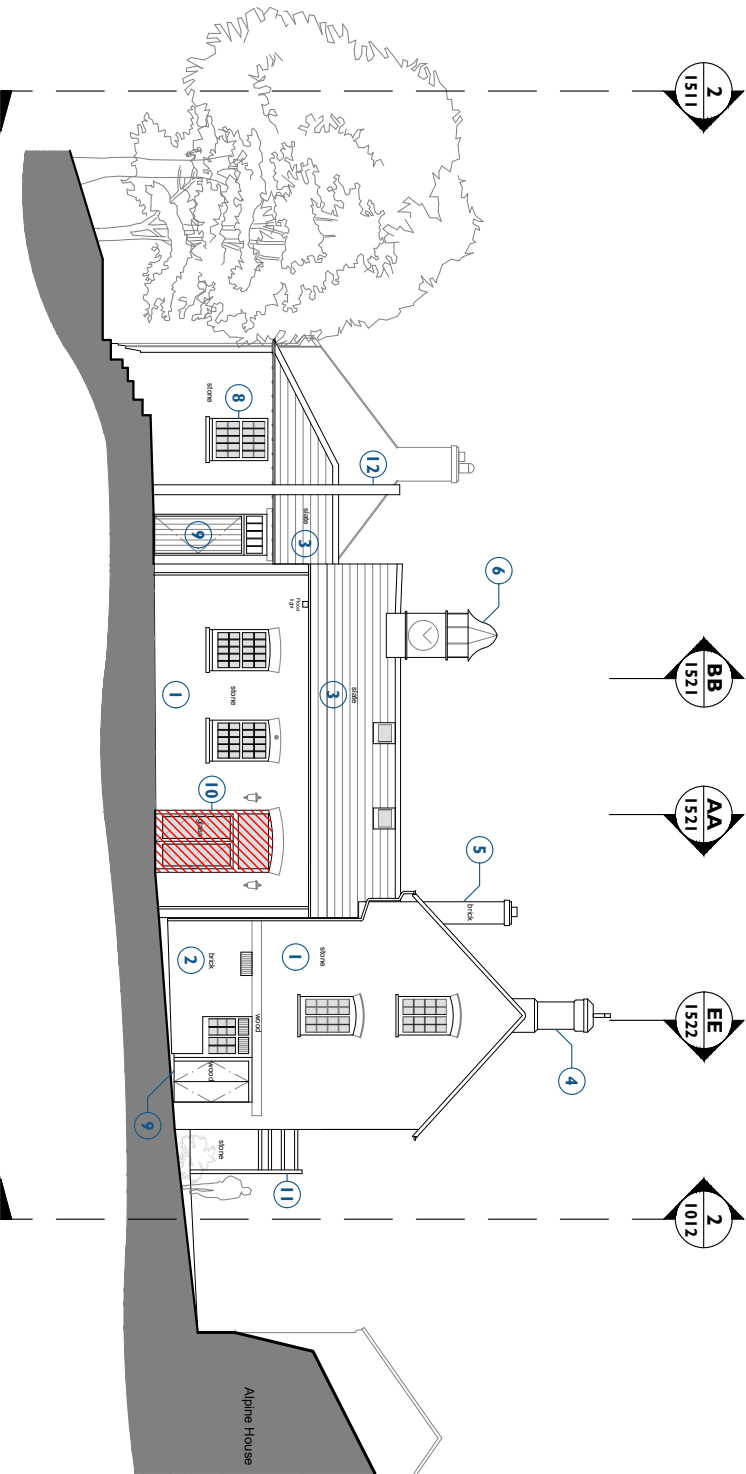


KEY

- Existing building fabric
- Demolition

Stable Block Demolitions - General

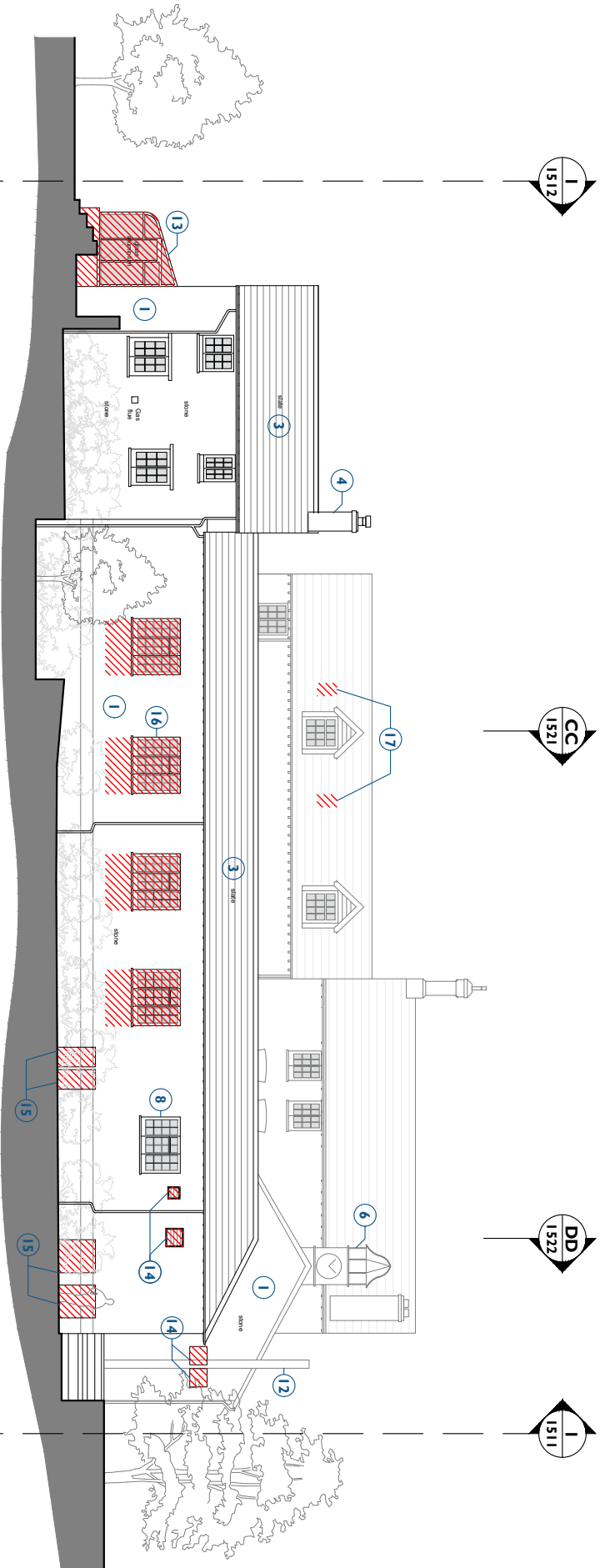
- Retain stonework.
- Retain brickwork.
- Retain slate roofing.
- Retain stone chimney.
- Retain brickwork chimney.
- Retain Clocktower.
- Retain dormers.
- Retain timber window.
- Retain timber door.
- Modern doorleafs and fanlight removed.
- Retain timber staircase.
- Retain telephone pole.
- Remove modern conservatory. Historic frame to be retained and protected.
- Remove modern extract grilles.
- Removal of mechanical equipment.
- Remove windows and wall below to allow for new larger windows. Historic frame to be retained and protected.
- Create openings for new extract vents.



Clock Tower Café
+ BOH

Porters' Cottage Flat
+ Storage

1 Demolition North Elevation
1511 Scale - 1:200 @ A3



Honey Cottage

Clock Tower Café

2 Demolition East Elevation
1511 Scale - 1:200 @ A3

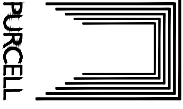


PO3	07/07/25	JS	JC	Planning Issue
REV	DATE	BY	CHK	DESCRIPTION

CLIENT
Leonardslee Gardens

PROJECT
Leonardslee Lakes and Gardens

JOB NUMBER
242769



TITLE
Demolition North & East Elevations
Stable Block

SIZE SCALE
A3L 1:200

REV SUTABILITY/REASON FOR ISSUE
P03 Planning Issue

DRAWING NUMBER
242769-PUR-01-ZZ-DR-A-1511

PURCELL IS THE REGISTERED TRADE NAME FOR PURCELL ARCHITECTURE LTD AND ALL SUBSIDIARY COMPANIES AND IS REGISTERED IN THE UNITED KINGDOM, EUROPEAN UNION, HONG KONG, CHINA AND AUSTRALIA © PURCELL 2020. WWW.PURCELL.COM