

- Stable Block Demolitions - Cafe

1

Retain historic stable slate roof.

2

Removal of modern PVC roof extension over existing historic structure to main entrance. Historic frame to be retained and protected

3

Retain back of house covering.

4

Retain Clocktower.

Potter's Cottage Demolitions

5

Retain slate roofing.

6

Retain chimneys.

Proposed Honey Cottage

10

Retain chimney.

11

Remove conservatory roof.

12

Retain slate roofing.

Carriage Cottage Demolitions

7

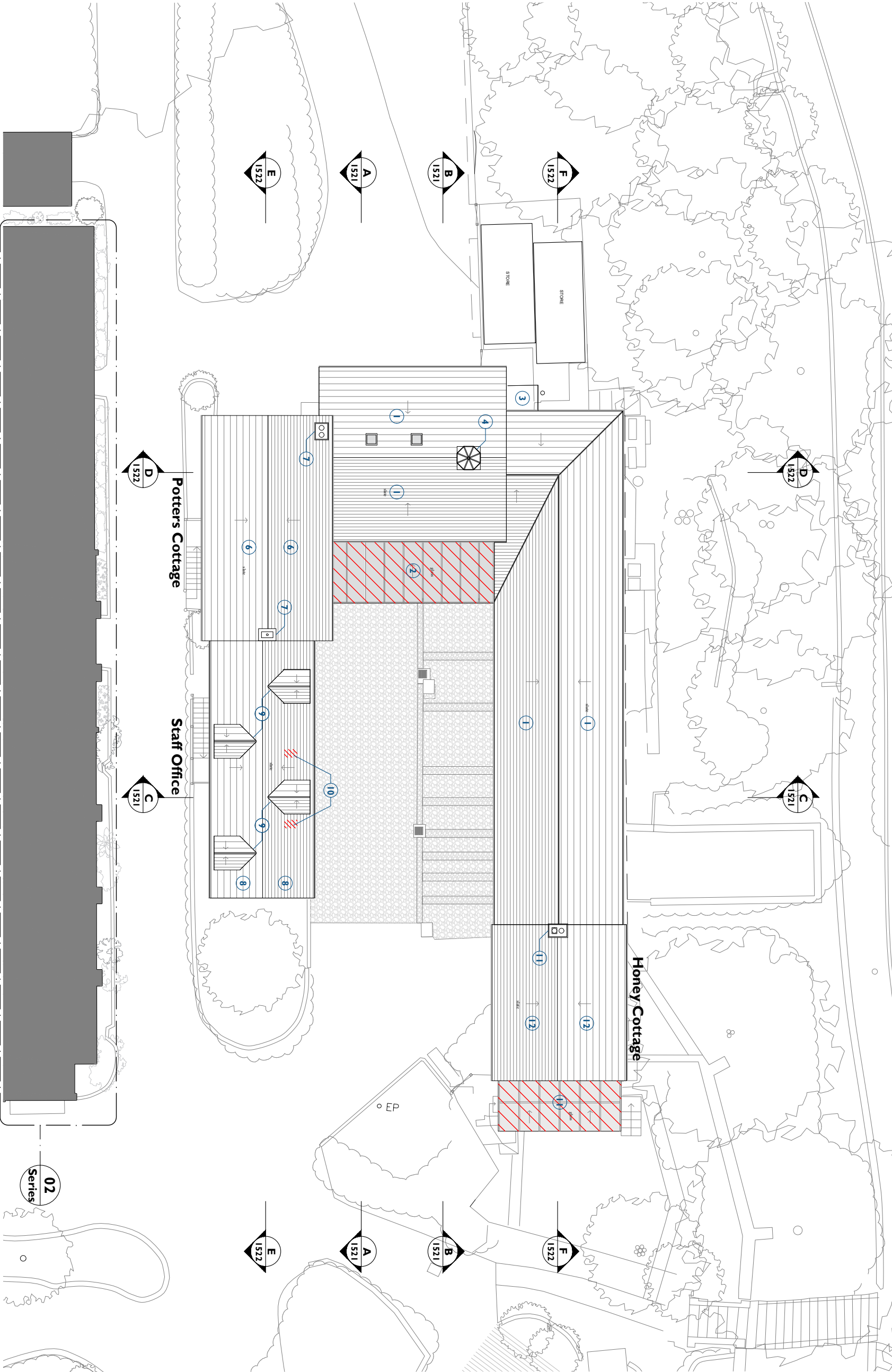
Retain slate roofing.

8

Retain dormers.

9

Create openings for new flues.



1

Demolition Roof Plan

1503

Scale - 1:200 @ A3



Notes:

Drawings are based on survey data and may not accurately represent what is physically present.

Do not scale from this drawing. All dimensions are to be verified on site before proceeding with the work.

All dimensions are in millimetres unless noted otherwise.

Purcell shall be notified in writing of any discrepancies.

Key Plan

not to scale



KEY

- Existing building fabric
- Demolition

PG3	07/07/25	J.S	J.C	Planning Issue
REV	DATE	BY	CHK	DESCRIPTION

CLIENT
Leonardslee Gardens

PROJECT
Leonardslee Lakes and Gardens

JOB NUMBER
242769

PURCELL

TITLE
Demolition Roof Plan
Stable Block

SIZE SCALE
A3L 1:200

REV SUITABILITY/REASON FOR ISSUE
P03 Planning Issue

DRAWING NUMBER
242769-PUR-01-RF-DR-A-1503

PURCELL IS THE REGISTERED TRADE NAME FOR PURCELL ARCHITECTURE LTD AND ALL SUBSIDIARY COMPANIES AND IS REGISTERED IN THE UNITED KINGDOM. EUROPEAN UNION, HONG KONG, CHINA AND AUSTRALIA © PURCELL 2020. WWW.PURCELL.COM