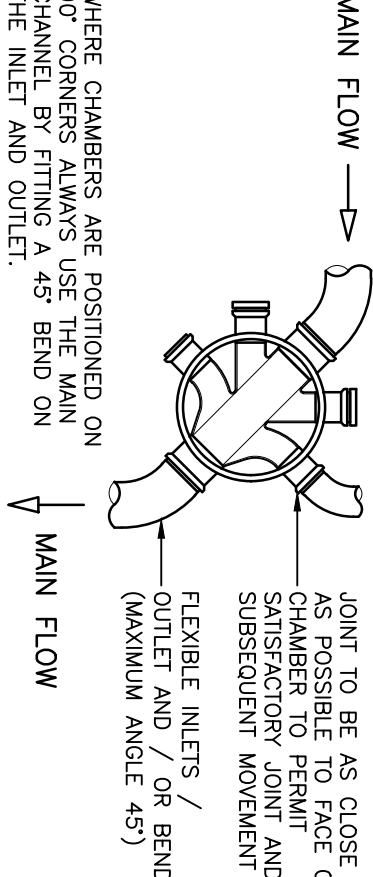
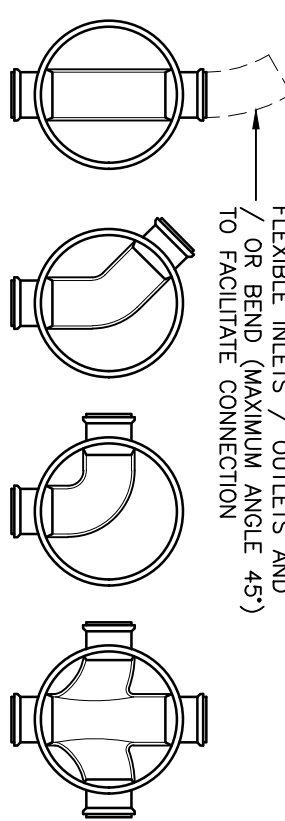


© This drawing is the copyright of ARCH Associates Limited. It may not be copied, altered or reproduced without their written authority. This drawing must not be scaled. It is 100% A3.

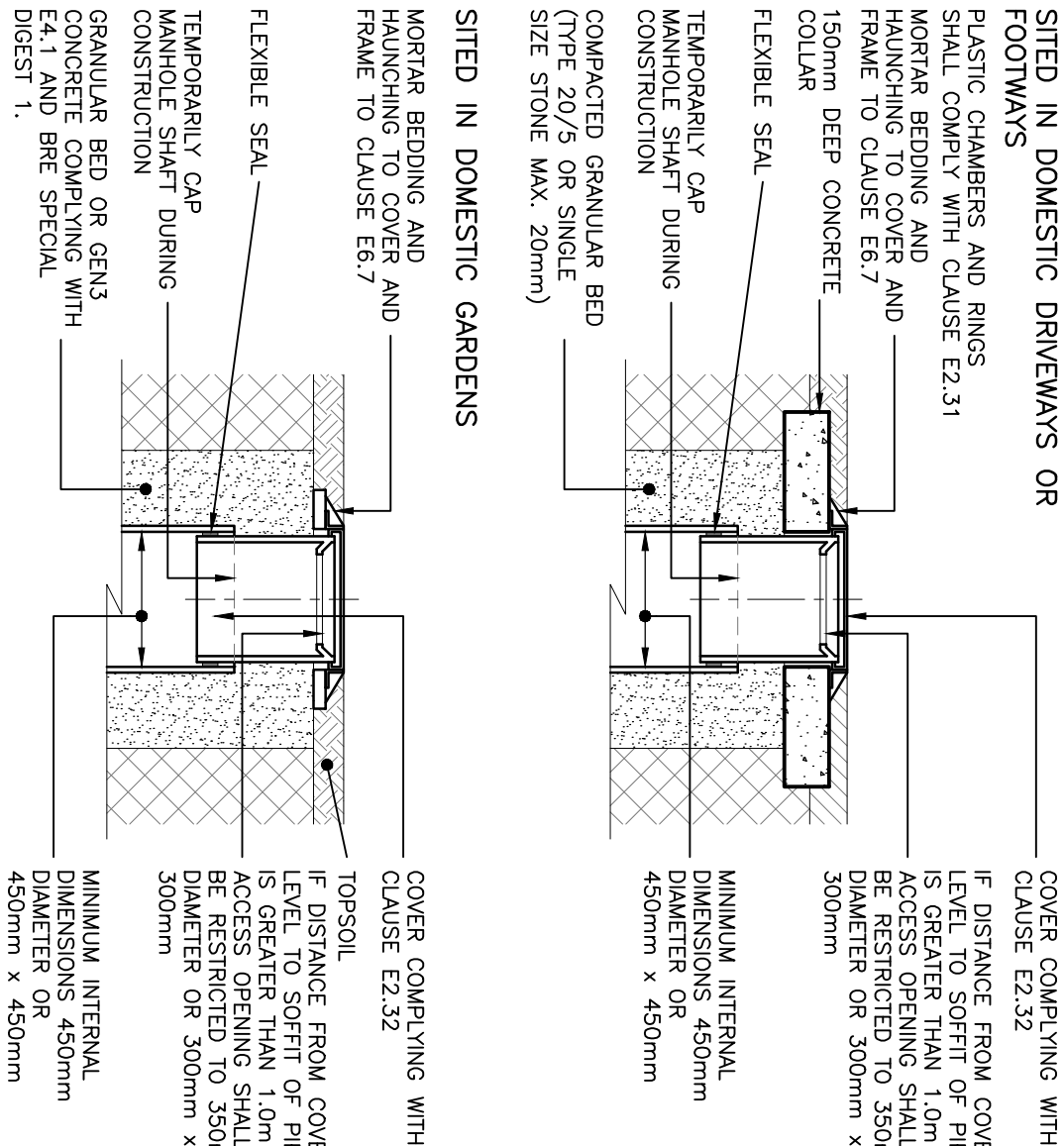
GENERAL NOTES

- THIS DRAWING IS TO BE READ IN CONJUNCTION WITH ALL DRAWINGS AND DETAILS.
- ALL FIGURED DIMENSIONS TO BE TAKEN IN PREFERENCE TO ANY DISCREPANCIES BETWEEN THIS DRAWING AND OTHER INFORMATION IS TO BE BROUGHT TO THE ATTENTION OF THE ENGINEER PRIOR TO THE COMMENCEMENT OF THE WORK.
- THE MAIN CONTRACTOR SHALL BE RESPONSIBLE FOR THE SETTING OUT AND ACCURACY OF ALL DIMENSIONS.
- THE CONTRACTOR IS TO ENSURE THE STABILITY AND AT ALL TIMES DURING WORKS AND IS TO BE RESPONSIBLE FOR PROPPING AND SHORING AS REQUIRED.
- MAIN CONTRACTOR TO PROVIDE AND FIX SUITABLE BRACING CONDITION DURING CONSTRUCTION STAGE, SUCH AS TO ENSURE STRUCTURE STABILITY AT ALL TIMES.
- IT IS THE CONTRACTOR'S SOLE RESPONSIBILITY FOR THE SPILL, NO CLAIM RESULTING FROM ABNORMAL TYPICAL REQUIREMENTS WILL BE ENTERAINED.

| KEY TO HEALTH AND SAFETY SYMBOLS | |
|----------------------------------|--|
| | THESE NOTES ARE BASED ON THE USE OF EXPERIENCED AND COMPETENT CONTRACTORS CARRYING OUT THE WORK USING AN APPROVED SAFE METHOD OF WORKING |
| | INDICATES A RESIDUAL RISK REQUIRING A PROHIBITIVE ACTION |
| | INDICATES A RESIDUAL RISK AS A WARNING |
| | INDICATES A RESIDUAL RISK FOR INFORMATION |

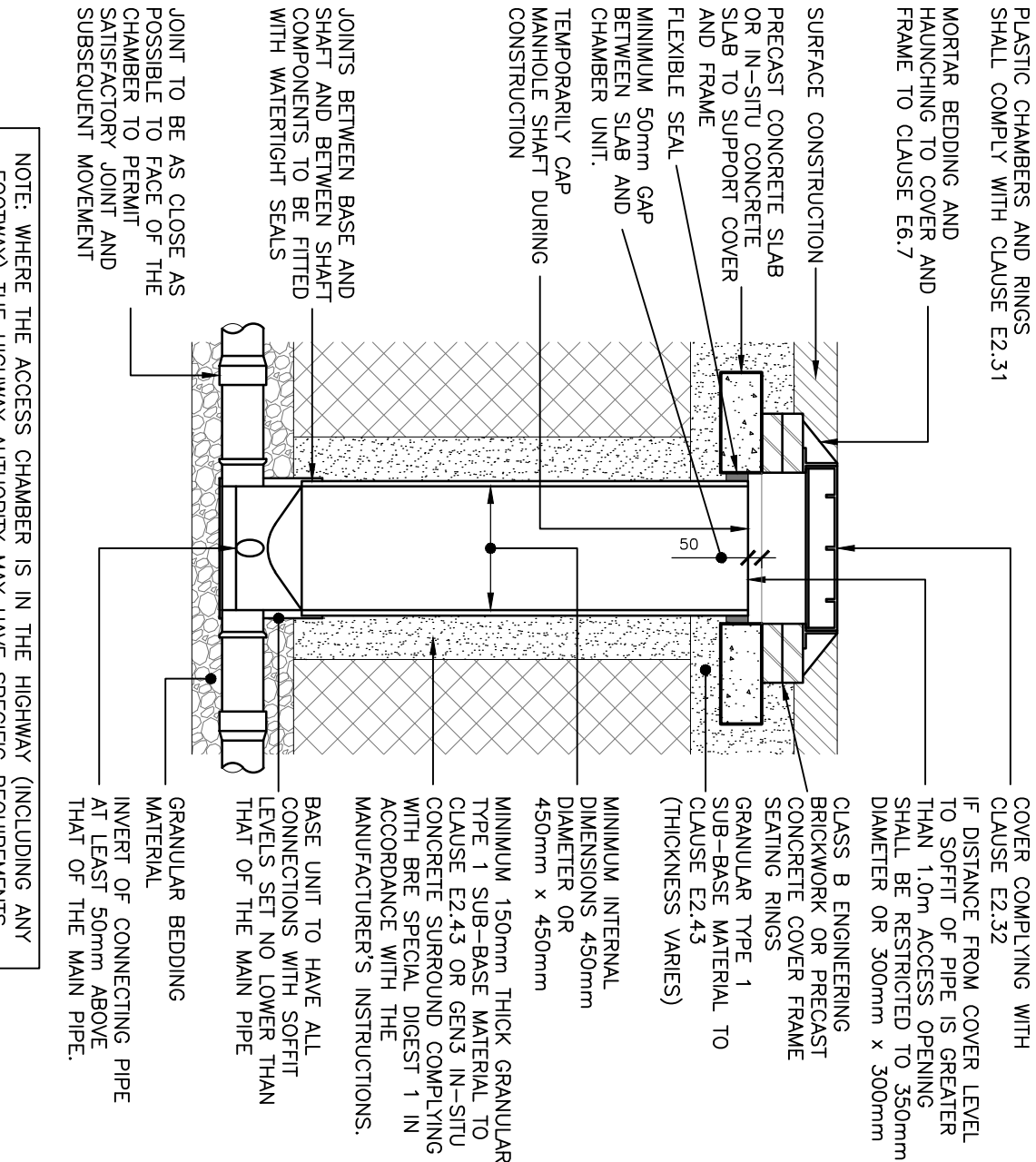


NOTE: WHERE A BEND IS USED IMMEDIATELY OUTSIDE THE MANHOLE, THIS MAY BE USED AS A ROCKER PIPE. (SCALE 1:250&A1)

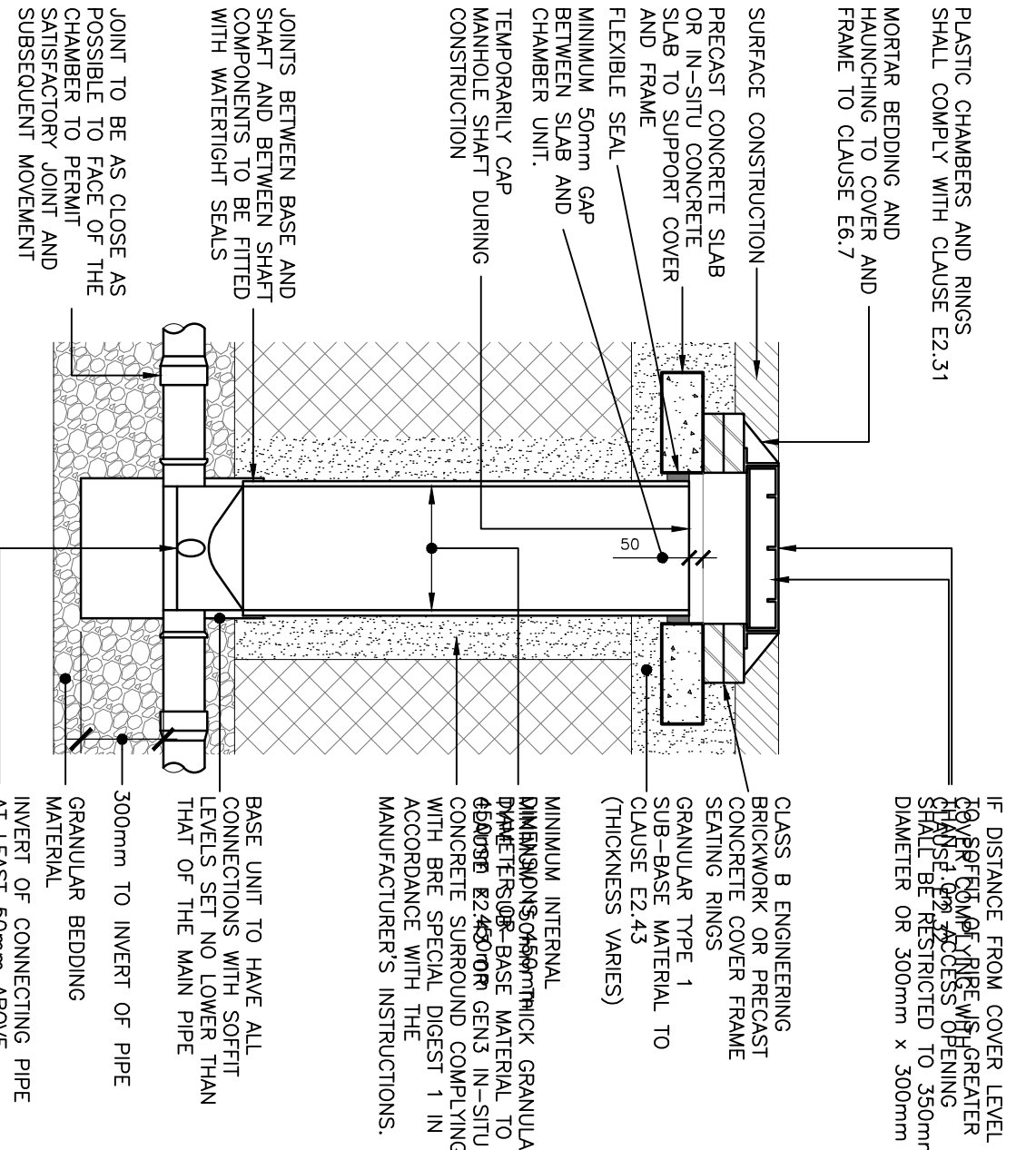


TYPICAL INSPECTION CHAMBER DETAIL – TYPE D
FLEXIBLE MATERIAL CONSTRUCTION ALTERNATIVE TOP DETAILS FOR USE IN AREAS OF LIGHT VEHICLE LOADING AND LANDSCAPED AREAS (SCALE 1:250&A1)

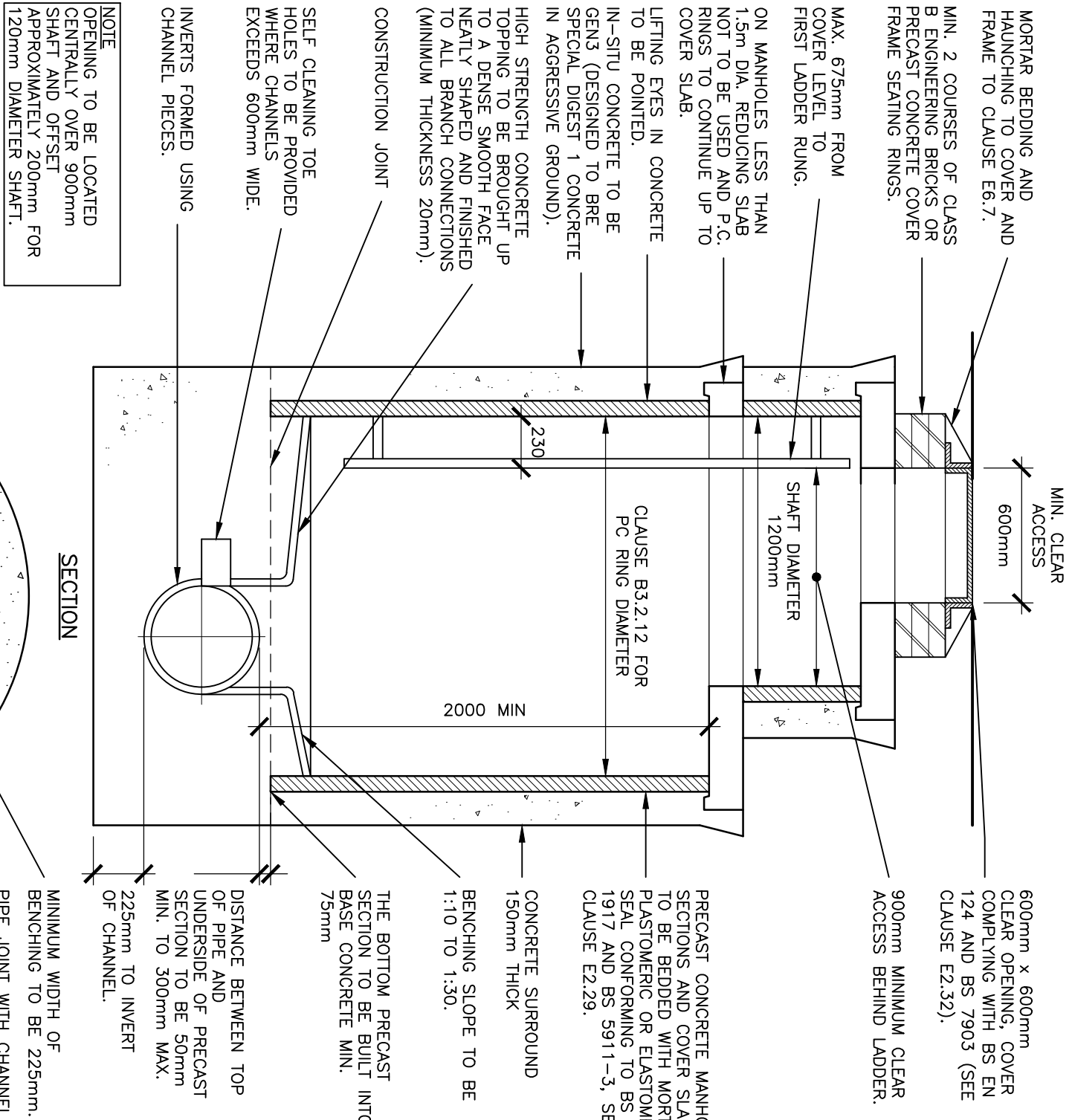
TYPICAL INSPECTION CHAMBER CATCHPI DETAIL – TYPE D
DEPTH FROM COVER LEVEL TO SOFTT OF PIPE UP TO 3m
FLEXIBLE MATERIAL CONSTRUCTION FOR USE IN AREAS SUBJECT TO VEHICLE LOADING (SCALE 1:250&A1)



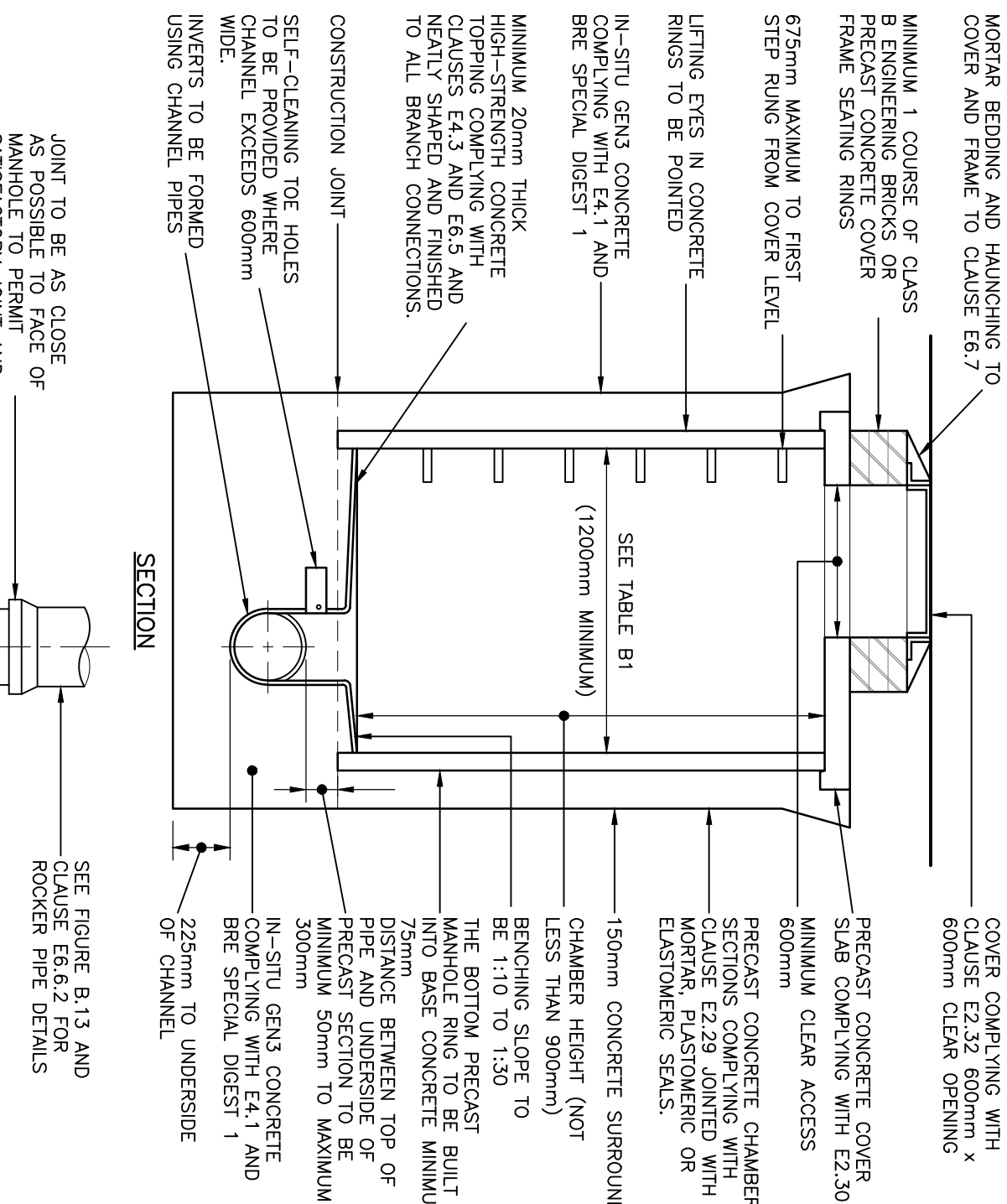
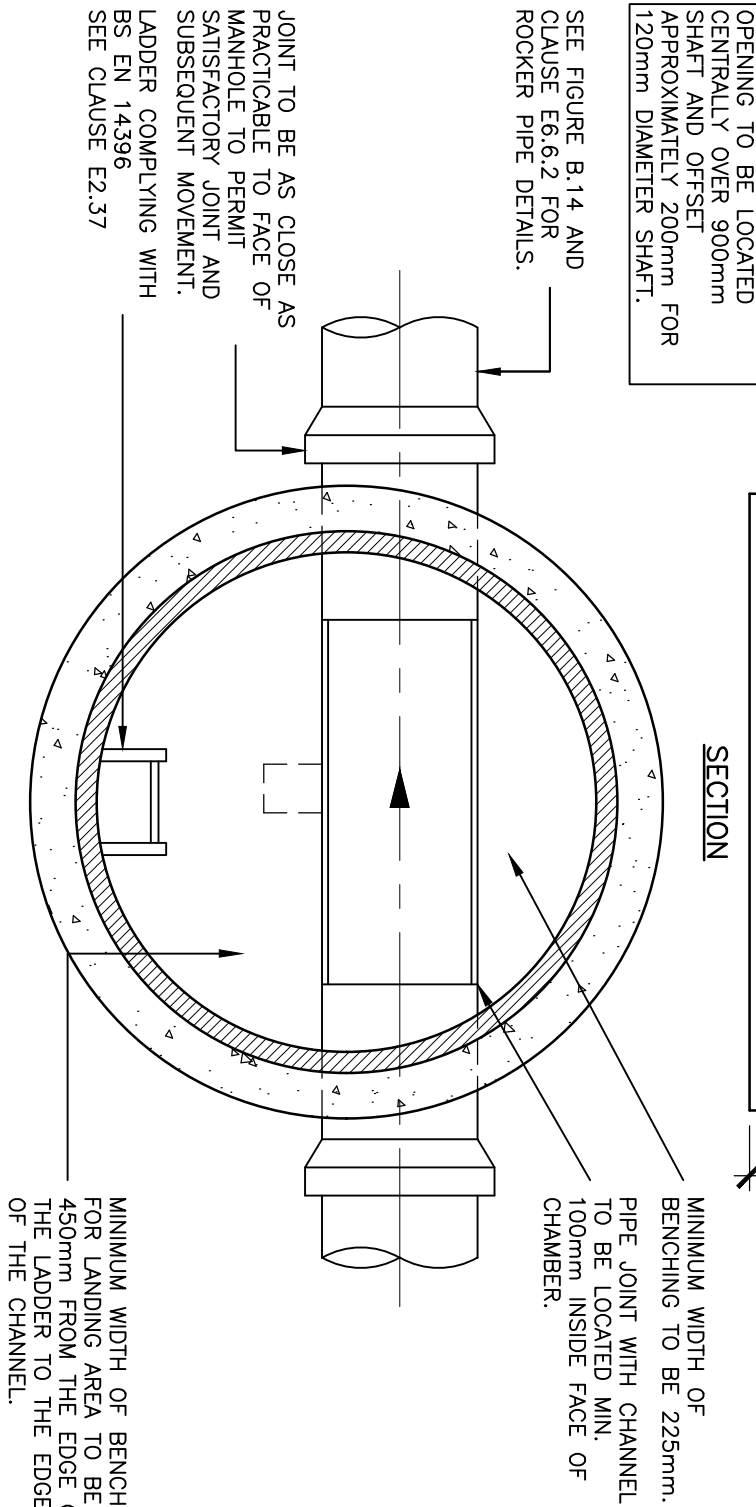
TYPICAL INSPECTION CHAMBER DETAIL – TYPE D
DEPTH FROM COVER LEVEL TO SOFTT OF PIPE UP TO 3m
FLEXIBLE MATERIAL CONSTRUCTION FOR USE IN AREAS SUBJECT TO VEHICLE LOADING (SCALE 1:250&A1)



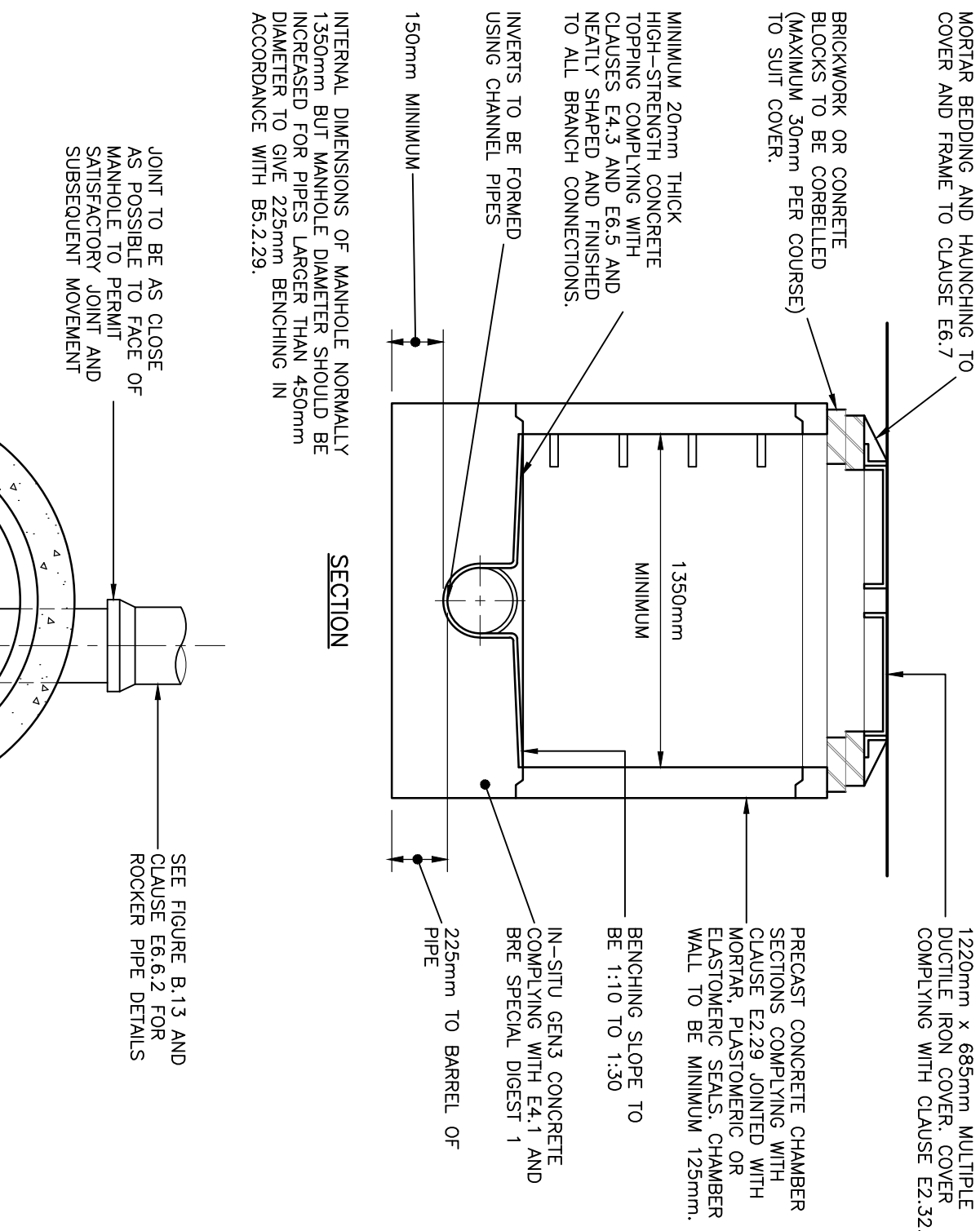
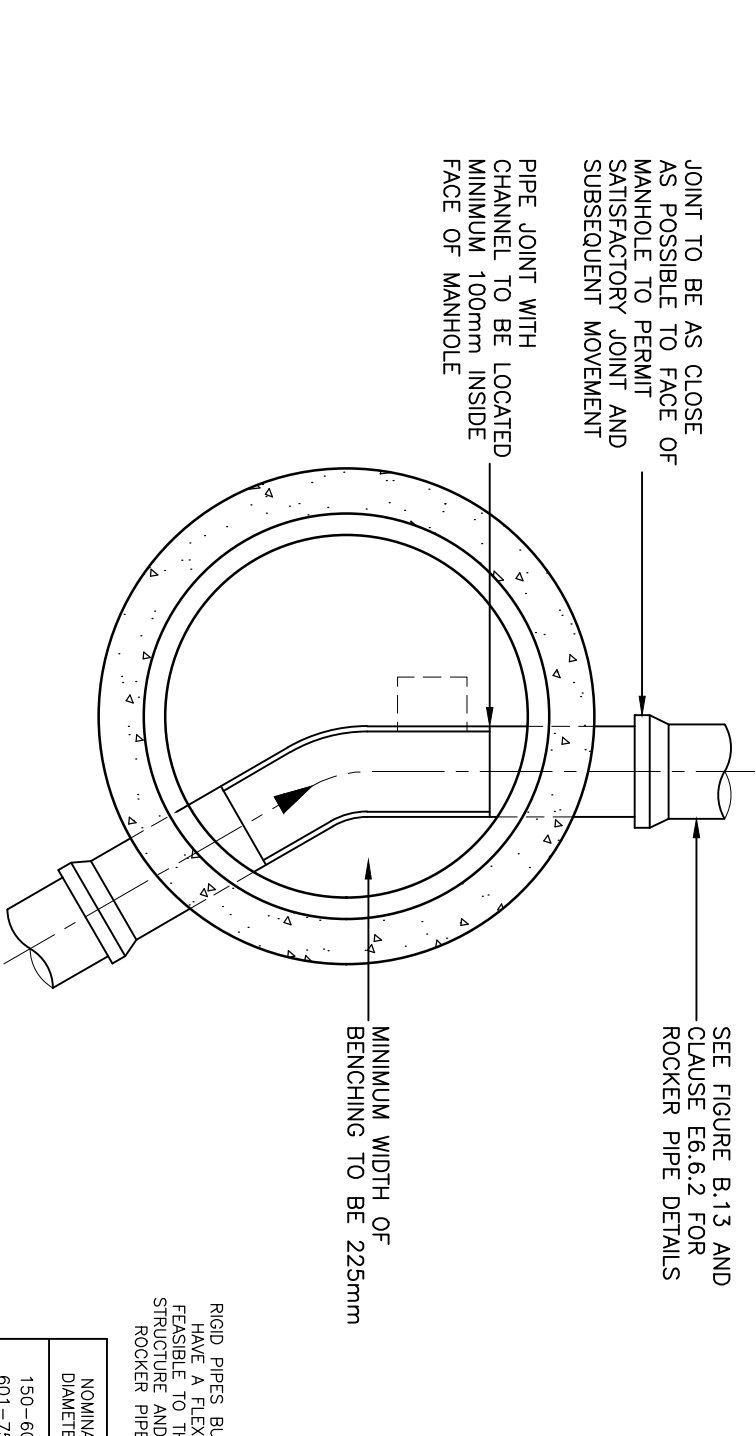
NOTE: WHERE THE ACCESS CHAMBER IS IN THE HIGHWAY (INCLUDING ANY FOOTWAY) THE HIGHWAY AUTHORITY MAY HAVE SPECIFIC REQUIREMENTS



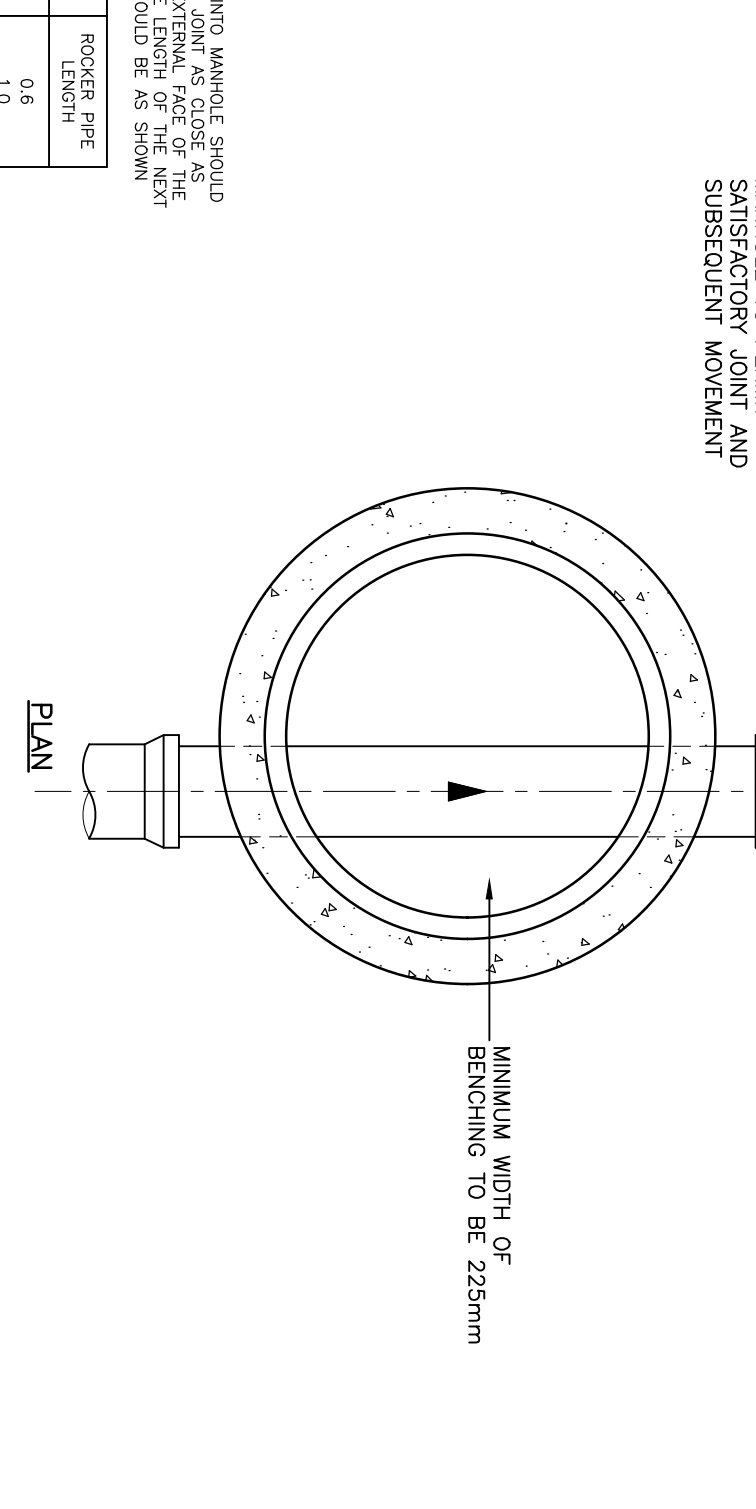
TYPICAL MANHOLE DETAIL – TYPE A
DEPTH FROM COVER LEVEL TO SOFTT OF PIPE 3.0m TO 6.0m (SCALE 1:250&A1)



TYPICAL MANHOLE DETAIL – TYPE B
DEPTH FROM COVER LEVEL TO SOFTT OF PIPE 1.5m-3.0m
(RIGID MATERIAL CONSTRUCTION WITH CONCRETE SURROUND) (SCALE 1:250&A1)



TYPICAL MANHOLE DETAIL – TYPE C
DEPTH FROM COVER LEVEL TO SOFTT OF PIPE LESS THAN 1.5m
(RIGID MATERIAL CONSTRUCTION) (SCALE 1:250&A1)



| RIGID PIPES BUILT INTO MANHOLE SHOULD PROVIDE A TO THE EXTERNAL SIDE OF THE STRUCTURE AND THE LENGTH OF THE NEXT ROCKER PIPE SHOULD BE AS SHOWN | |
|---|--------------------|
| NOMINAL DIAMETER | ROCKER PIPE LENGTH |
| 150-400 | 1.0 |
| 450-600 | 1.1 |
| OVER 750 | 1.25 |

| Scale | Page size | Date | Drawn by | Checked by | Status |
|----------|-----------|----------|----------|------------|--------|
| AS SHOWN | A1 | MAR 2025 | TA | CH | S3 |