

Legend

- Site Boundary
- All Breeding Bird Data (with BTO code)
- Target note
- Scattered Scrub
- Broadleaved scattered trees
- Coniferous scattered trees
- Scrub - scattered
- Broadleaved Parkland/scattered trees
- Coniferous Parkland/scattered trees
- Mixed Parkland/scattered trees
- Standing water
- Running water
- Intact hedge - native species-rich
- Intact hedge - species-poor
- Defunct hedge - species-poor
- Hedge with trees - native species-rich
- Hedge with trees - species-poor
- Fence
- Wall
- Dry ditch
- Broadleaved woodland - semi-natural
- Broadleaved woodland - plantation
- Mixed woodland - plantation
- Scrub - dense/continuous
- Scrub - scattered
- Broadleaved Parkland/scattered trees
- Mixed Parkland/scattered trees
- Neutral grassland - semi-improved
- Marsh/marshy grassland
- Poor semi-improved grassland
- Bracken - continuous
- Bracken - scattered
- Other tall herb and fern - ruderal
- Standing water
- Cultivated/disturbed land - arable
- Cultivated/disturbed land - amenity grassland
- Cultivated/disturbed land - ephemeral/short perennial
- Introduced shrub
- Buildings
- Bare ground
- Sandpits
- Hardstanding
- Unable to

Sheet Location

© Crown copyright and database rights 2018
Ordnance Survey 0100031673

Rev	Status	Rev Date	Purpose of revision	PN	BM	MG
01	S2	05/20/2019	Initial Issue			

Client: **Homes England**

Designer: **ARCADIS**
Registered office: Arcadis House, 34 York Way, London, N1 9AB
Coordinating office: 5th Floor, 401 Faraday Street, Brixwood, Warrington, WA3 6GA

Project: **Land West of Ifield**

Drawing Title: **Figure 1
Breeding Bird Surveys All Results**

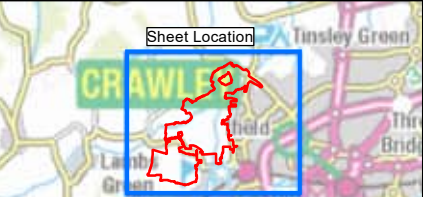
Status	S2	Revision	01
Scale	1:3,500	Date	05/20/2019
Drawn By	P. Nishle		
Checked By	B. Murrery		
Approved By	M. Girvan		
PHNS No.			
Drawing number	001	01	01

Figure 2: 'Farmland' birds identified during the breeding bird surveys

N.B. All BTO codes used in this map are presented in Appendix G.



- Legend**
- Site Boundary
 - Farmland Birds (with BTO species code)
 - Confirmed Breeder
 - Possible Breeder
 - Probable Breeder
 - Not Breeding



© Crown copyright and database rights 2018
Ordnance Survey 0100031673

Rev	Status	Rev. Date	Purpose of revision	Drawn	Chk'd	Appr'd
01	S2	05/20/2019	Initial Issue	PN	BM	MG

Client



Designer
ARCADIS
Registered office:
Arcadis House
34 York Way
London
N1 9AB
Coordinating office:
5th Floor, 401 Faraday Street
Birchwood
Warrington
WA3 6GA

Project
Land West of Ifield

Figure 2
Farmland Birds Identified During the
Breeding Bird Surveys

Status	S2	Revision	01
Scale	1:10,000	Date	05/20/2019

Drawn By P. Nehete

Checked By B. Murrery

Approved By M. Girvan

PINS No.

Drawing number

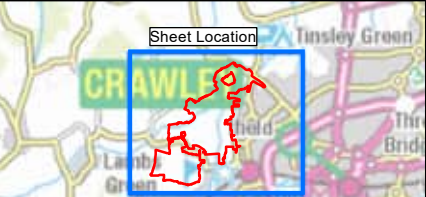
0 100 200 Metres

Figure 3: Notable birds and birds of conservation concern observed during the breeding bird surveys

N.B. All BTO codes used in this map are presented in Appendix G.



- Legend**
- Site Boundary
 - Notable Birds of Conservation Concern (with BTO species code)
 - Confirmed Breeder
 - Possible Breeder
 - Probable Breeder
 - Not Breeding



© Crown copyright and database rights 2018
Ordnance Survey 0100031673

Rev	Status	Rev. Date	Purpose of revision	Drawn	Chk'd	Appr'd
01	S2	05/20/2019	Initial Issue	PN	BM	MG

Client

Designer

Registered office:
Arcadis House
34 York Way
London
N1 9AB

Coordinating office:
5th Floor, 401 Faraday Street
Birchwood
Warrington
WA3 6GA

Project

Land West of Ifield

Drawing Title

Figure 3
Notable Birds of Conservation Concern
Identified During the Breeding Bird Surveys

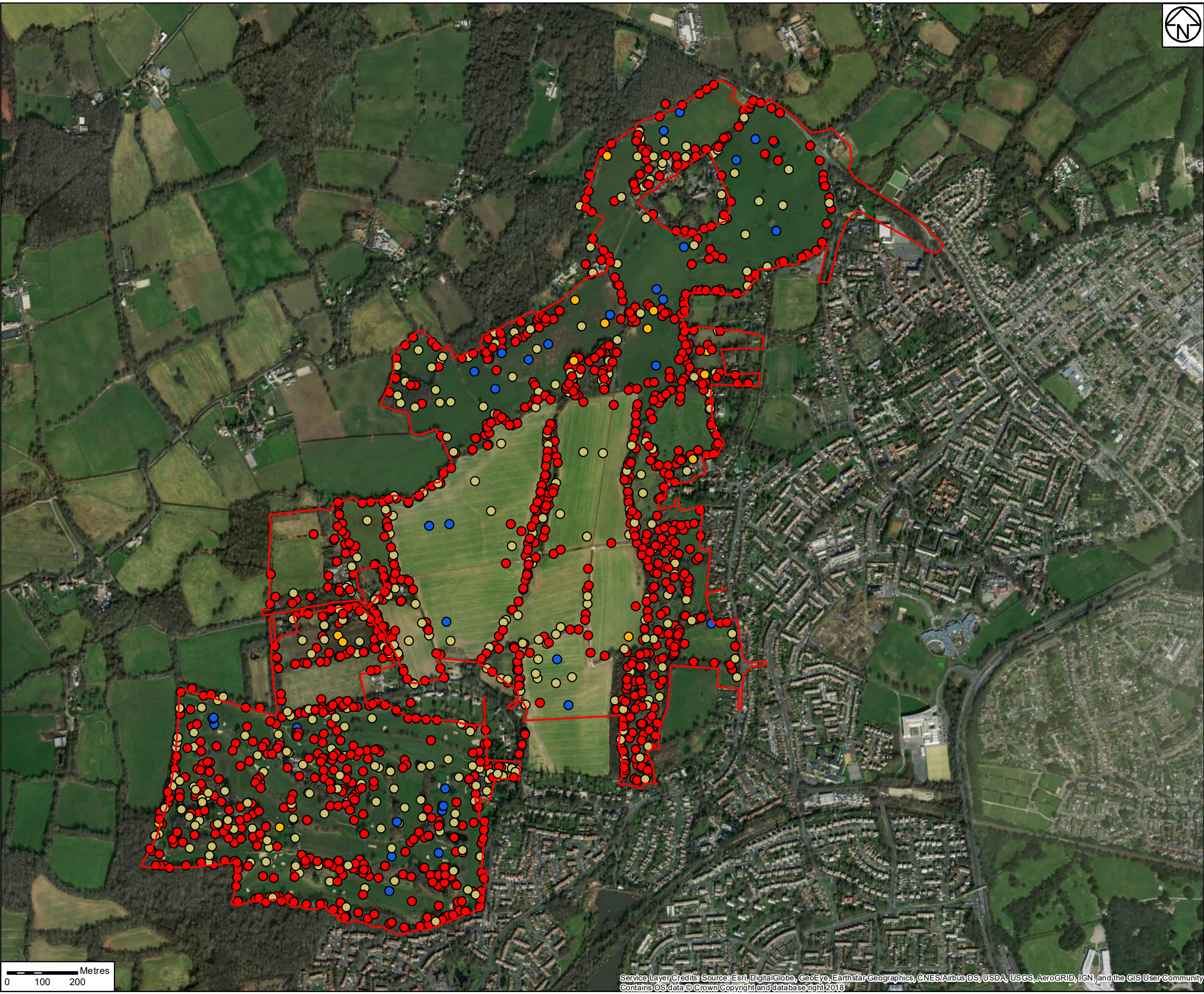
Status	S2	Revision	01
Scale	1:10,000	Date	05/20/2019
Drawn By	P. Nehete		
Checked By	B. Murrany		
Approved By	M. Girvan		
PHS No.			
Drawing number	HE-PIN	Originator	Volume
		Location	Type
		Drawn	Number

0 100 200 Metres

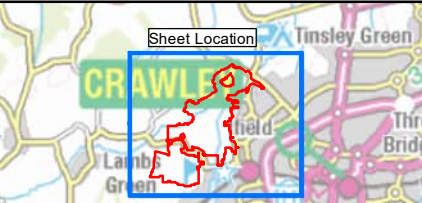
Service Layer Credits: Contains OS data © Crown Copyright and database right 2018
Source: Esri, DigitalGlobe, GeoEye, Earthstar Geographics, CNES/Airbus DS, USDA, USGS, AeroGRID, IGN, and the GIS User

Figure 4: Summary of all birds considered to be breeding on site

N.B. All BTO codes used in this map are presented in Appendix G.



- Legend**
- Site Boundary
 - All Breeding Bird Data (with BTO code)
 - Confirmed Breeder
 - Probable Breeder
 - Possible Breeder
 - Not Breeding



© Crown copyright and database rights 2018
Ordnance Survey 0100031673

Rev	Status	Rev. Date	Purpose of revision	Drawn	Chkd	Appvd
01	S2	18-Jun-19	Initial Issue	PN	BM	MG

Client

Homes England

Designer

ARCADIS
Registered office:
Arcadis House
34 York Way
London
N1 9AB

Coordinating office:
5th Floor, 401 Faraday Street
Richwood
Warrington
WA3 6GA

Project

Land West of Ifield

Drawing Title

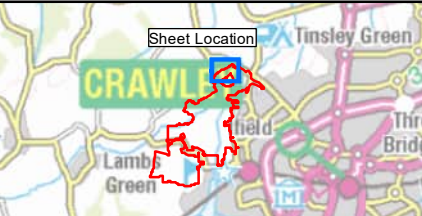
Figure 4
Summary of All Birds Considered to be
Breeding On-site
(Page 1 of 22)

Status	S2	Revision	01
Scale	1:10,000	Date	18-Jun-19
Drawn By	P. Nehete		
Checked By	B. Murray		
Approved By	M. Givan		
PINS No.			
Drawing number	RE-PIN	Originator	Volume
		Location	Type
			Revision
			Number

0 100 200 Metres



- Legend**
- Site Boundary
 - All Breeding Bird Data (with BTO code)
 - Confirmed Breeder
 - Probable Breeder
 - Possible Breeder
 - Not Breeding



© Crown copyright and database rights 2018
Ordnance Survey 0100031673

01	S2	18-Jun-19	Initial Issue	PN	BM	MG
Rev	Status	Rev. Date	Purpose of revision	Drawn	Chkd	Apprvd

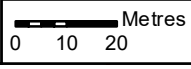
Client
Homes England

Designer
ARCADIS
Registered office:
Arcadis House
34 York Way
London
N1 9AB
Coordinating office:
5th Floor, 401 Faraday Street
Richwood
Warrington
WA3 6GA

Project
Land West of Ifield

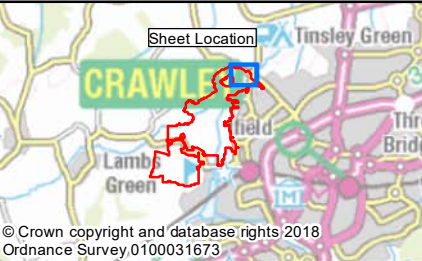
Drawing Title
Figure 4
Summary of All Birds Considered to be Breeding On-site
(Page 2 of 22)

Status	S2	Revision	01
Scale	1:1,500	Date	18-Jun-19
Drawn By	P. Nehete		
Checked By	B. Murray		
Approved By	M. Givan		
PINS No.			
Drawing number	RE PIR	Originator	Volume
		Location	Type
			Number





- Legend**
- Site Boundary
 - All Breeding Bird Data (with BTO code)
 - Confirmed Breeder
 - Possible Breeder
 - Not Breeding



01	S2	18-Jun-19	Initial Issue	PN	BM	MG
Rev	Status	Rev. Date	Purpose of revision	Drawn	Chkd	Apprvd

Client

Homes England

Designer

ARCADIS Design & Construction

Registered office: Arcadis House, 34 York Way, London N1 9AB

Coordinating office: 5th Floor, 401 Faraday Street, Richmond, Warrington WA3 6GA

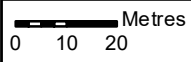
Project

Land West of Ifield

Drawing Title

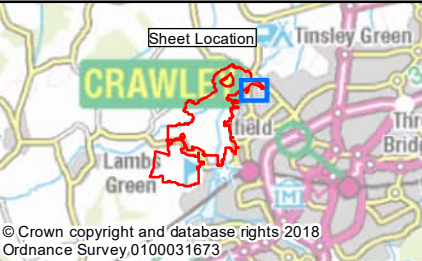
Figure 4
Summary of All Birds Considered to be Breeding On-site
(Page 3 of 22)

Status	S2	Revision	01
Scale	1:1,500	Date	18-Jun-19
Drawn By	P. Nehete		
Checked By	B. Murray		
Approved By	M. Givan		
PINS No.			
Drawing number	RE PIR	Originator	Volume
		Location	Type
			Number





- Legend**
- Site Boundary
 - All Breeding Bird Data (with BTO code)
 - Confirmed Breeder
 - Possible Breeder



© Crown copyright and database rights 2018
Ordnance Survey 0100031673

01	S2	18-Jun-19	Initial Issue	PN	BM	MG
Rev	Status	Rev. Date	Purpose of revision	Drawn	Chkd	Apprvd

Client

Homes England

Designer

ARCADIS

Registered office:
Arcadis House
34 York Way
London
N1 9AB

Coordinating office:
5th Floor, 401 Faraday Street
Richwood
Warrington
WA3 6GA

Project

Land West of Ifield

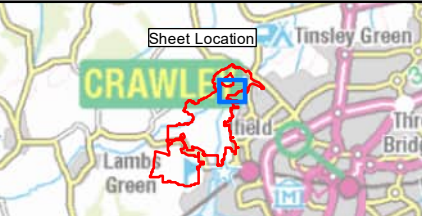
Drawing Title

Figure 4
Summary of All Birds Considered to be Breeding On-site
(Page 4 of 22)

Status	S2	Revision	01
Scale	1:1,500	Date	18-Jun-19
Drawn By	P. Nehete		
Checked By	B. Murray		
Approved By	M. Girvan		
PINS No.			
Drawing number	RE-PIN	Originator	Volume
		Location	Type
			Revision
			Number



- Legend**
- Site Boundary
 - All Breeding Bird Data (with BTO code)
 - Confirmed Breeder
 - Probable Breeder
 - Possible Breeder
 - Not Breeding



© Crown copyright and database rights 2018
Ordnance Survey 0100031673

01	S2	18-Jun-19	Initial Issue	PN	BM	MG
Rev	Status	Rev. Date	Purpose of revision	Drawn	Chkd	Apprvd

Client

Homes England

Designer

ARCADIS

Registered office:
Arcadis House
34 York Way
London
N1 9AB

Coordinating office:
5th Floor, 401 Faraday Street
Richwood
Warrington
WA3 6GA

Project

Land West of Ifield

Drawing Title

Figure 4
Summary of All Birds Considered to be Breeding On-site
(Page 5 of 22)

Status	S2	Revision	01
Scale	1:1,500	Date	18-Jun-19
Drawn By	P. Nehete		
Checked By	B. Murray		
Approved By	M. Givan		
PINS No.			
Drawing number	HE-PIN	Originator	Volume
		Location	Type
			Revision
			Number





Legend

- Site Boundary
- Confirmed Breeder
- Probable Breeder
- Possible Breeder

All Breeding Bird Data (with BTO code)

The aerial map shows a residential area with a green field labeled 'Ilfeld'. A red outline marks the site boundary. Several colored dots indicate breeding birds: one confirmed breeder (red) near the top left, several probable breeders (orange), and many possible breeders (yellow). Labels include 'Tinsley Green' at the top right and 'Lamb Green' at the bottom left.

© Crown copyright and database rights 2018
Ordnance Survey 0100031673

Rev	Status	Rev. Date	Purpose of revision	Drawn	Check'd	Appr'd
01	S2	18-Jun-19	Initial Issue	PN	BM	MG

Client

Homes England

Designer

Registered office:
Arcadis House
34 York Way
London
N1 9AB

Coordinating office:
5th Floor, 401 Farsday Street
Brixwood
Warrington
WA3 6GA

Project

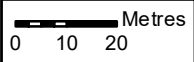
Land West of Ifield

Drawing Title

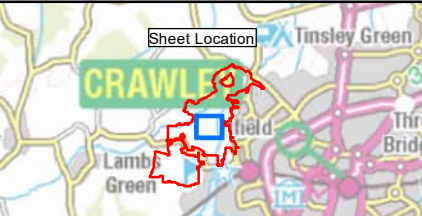
Figure 4
Summary of All Birds Considered to be
Breeding On-site
(Page 9 of 22)

	Status	S2	Revision	01
Scale	1:1,500		Date	18-Jun-19
Drawn By	P. Nehete			
Checked By	B. Murray			
Approved By	M. Givan			
PINS No.				

Drawing number	HE PINS		Original		Volume		Location		Type		Revised		Number
----------------	---------	--	----------	--	--------	--	----------	--	------	--	---------	--	--------



- Legend**
- Site Boundary
 - All Breeding Bird Data (with BTO code)
 - Confirmed Breeder
 - Possible Breeder



© Crown copyright and database rights 2018
Ordnance Survey 0100031673

01	S2	18-Jun-19	Initial Issue	PN	BM	MG
Rev	Status	Rev. Date	Purpose of revision	Drawn	Check'd	Approved

Client
Homes England

Designer
ARCADIS
Registered office:
Arcadis House
34 York Way
London
N1 9AB
Coordinating office:
5th Floor, 401 Faraday Street
Bichwood
Warrington
WA3 6GA

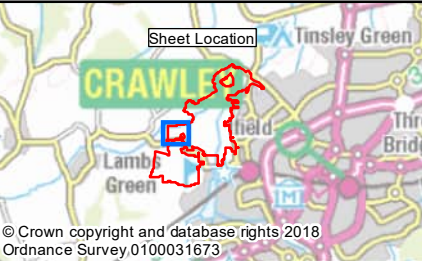
Project
Land West of Ifield

Drawing Title
Figure 4
Summary of All Birds Considered to be Breeding On-site
(Page 11 of 22)

Status	S2	Revision	01
Scale	1:1,500	Date	18-Jun-19
Drawn By	P. Nehete	Checked By	B. Murray
Approved By	M. Girvan	PINS No.	
Drawing number	RE-PIN	Originator	Volume
Location	Type	Drawn	Number



- Legend**
- Site Boundary
 - All Breeding Bird Data (with BTO code)
 - Confirmed Breeder
 - Possible Breeder
 - Not Breeding



01	S2	18-Jun-19	Initial Issue	PN	BM	MG
Rev	Status	Rev. Date	Purpose of revision	Drawn	Checked	Approved

Client

Homes England

Designer

ARCADIS

Registered office:
Arcadis House
34 York Way
London
N1 9AB

Coordinating office:
5th Floor, 401 Faraday Street
Richwood
Warrington
WA3 6GA

Project

Land West of Ifield

Drawing Title

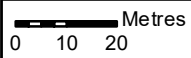
Figure 4
Summary of All Birds Considered to be Breeding On-site
(Page 13 of 22)

Status	S2	Revision	01
Scale	1:1,500	Date	18-Jun-19
Drawn By	P. Nehete	Checked By	B. Murray
Approved By	M. Girvan	PINS No.	
Drawing number	RE-PIN	Originator	Volume
		Location	Type
			Number

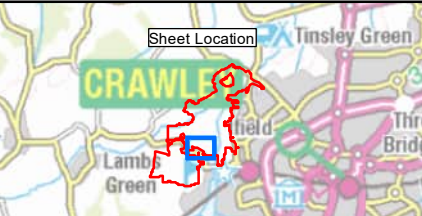
0 10 20 Metres



- Legend**
- Site Boundary
 - All Breeding Bird Data (with BTO code)
 - Confirmed Breeder
 - Possible Breeder
 - Not Breeding



Service Layer Credits: Source: Esri, DigitalGlobe, GeoEye, Earthstar Geographics, CNES/Airbus DS, USDA, USGS, AeroGRID, IGN, and the GIS User Community
Contains OS data © Crown Copyright and database right 2018



© Crown copyright and database rights 2018
Ordnance Survey 0100031673

01	S2	18-Jun-19	Initial Issue	PN	BM	MG
Rev	Status	Rev. Date	Purpose of revision	Drawn	Chkd	Apprvd

Client

Homes England

Designer

ARCADIS

Registered office:
Arcadis House
34 York Way
London
N1 9AB

Coordinating office:
5th Floor, 401 Faraday Street
Richwood
Warrington
WA3 6GA

Project

Land West of Ifield

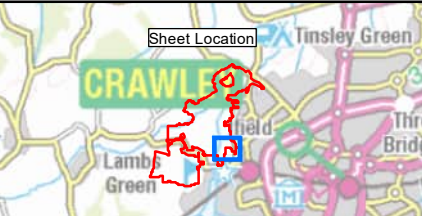
Drawing Title

Figure 4
Summary of All Birds Considered to be Breeding On-site
(Page 14 of 22)

Status	S2	Revision	01
Scale	1:1,500	Date	18-Jun-19
Drawn By	P. Nehete		
Checked By	B. Murray		
Approved By	M. Girvan		
PINS No.			
Drawing number	RE-PIN	Originator	Volume
		Location	Type
			Revision
			Number



- Legend**
- Site Boundary
 - All Breeding Bird Data (with BTO code)
 - Confirmed Breeder
 - Probable Breeder
 - Possible Breeder
 - Not Breeding



© Crown copyright and database rights 2018
Ordnance Survey 0100031673

01	S2	18-Jun-19	Initial Issue	PN	BM	MG
Rev	Status	Rev. Date	Purpose of revision	Drawn	Chkd	Appvd

Client

Designer

Registered office:
Arcadis House
34 York Way
London
N1 9AB

Coordinating office:
5th Floor, 401 Faraday Street
Richwood
Warrington
WA3 6GA

Project
Land West of Ifield

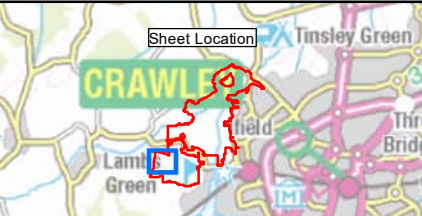
Drawing Title
Figure 4
Summary of All Birds Considered to be Breeding On-site
(Page 15 of 22)

Status	S2	Revision	01
Scale	1:1,500	Date	18-Jun-19
Drawn By	P. Nehete	Checked By	B. Murray
Approved By	M. Girvan	PINS No.	
Drawing number	RE-PIN	Originator	Volume
Location	Type	Drawn	Number

0 10 20 Metres



- Legend**
- Site Boundary
 - All Breeding Bird Data (with BTO code)
 - Confirmed Breeder
 - Probable Breeder
 - Possible Breeder
 - Not Breeding



© Crown copyright and database rights 2018
Ordnance Survey 0100031673

01	S2	18-Jun-19	Initial Issue	PN	BM	MG
Rev	Status	Rev. Date	Purpose of revision	Drawn	Checked	Approved

Client

Homes England

Designer

ARCADIS

Registered office:
Arcadis House
34 York Way
London
N1 9AB

Coordinating office:
5th Floor, 401 Faraday Street
Bichwood
Warrington
WA3 6GA

Project

Land West of Ifield

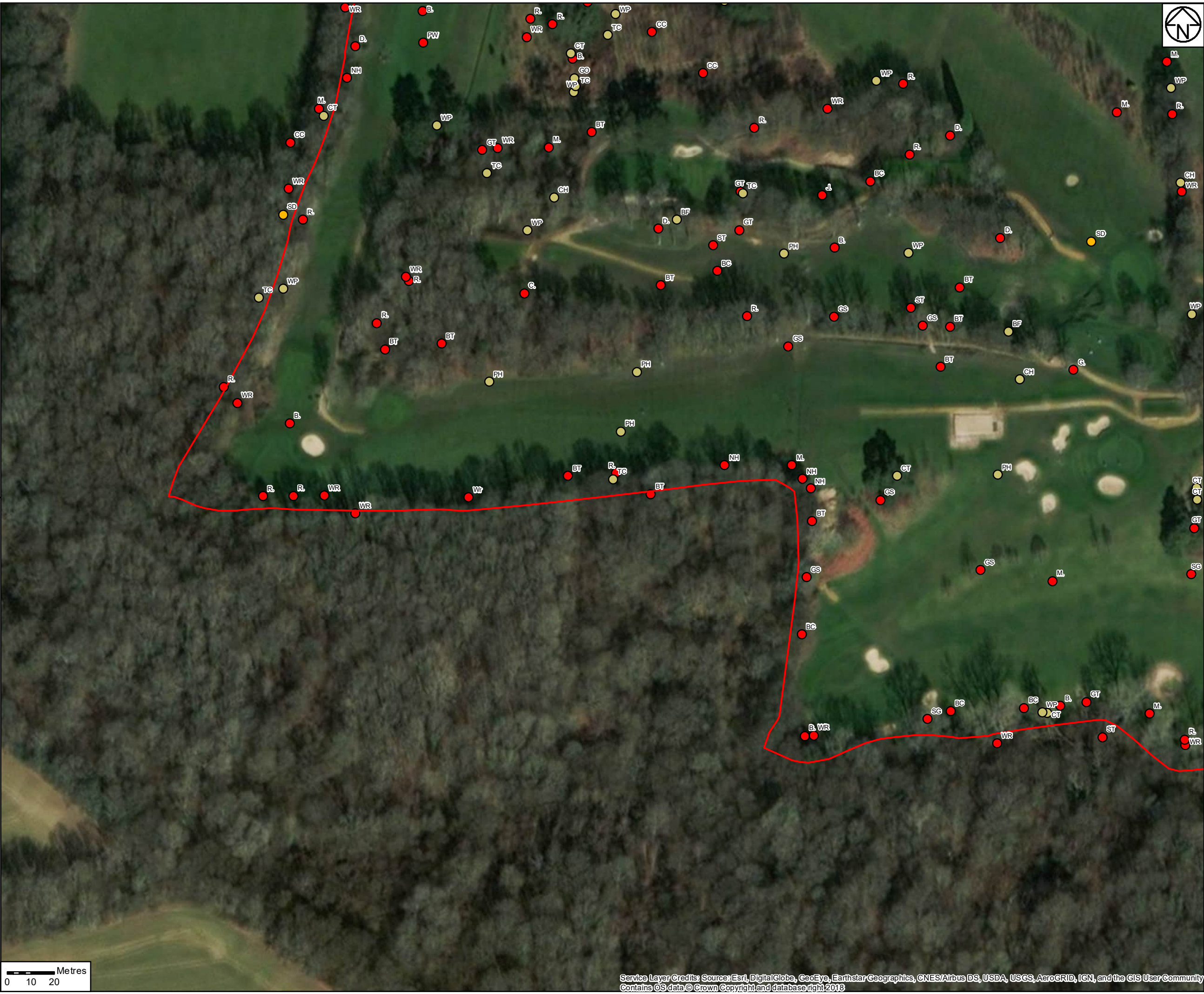
Drawing Title

Figure 4
Summary of All Birds Considered to be Breeding On-site
(Page 17 of 22)

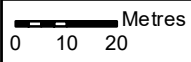
Status	S2	Revision	01
Scale	1:1,500	Date	18-Jun-19
Drawn By	P. Nehete		
Checked By	B. Murray		
Approved By	M. Givan		
PINS No.			
Drawing number	RE-PIN	Originator	Volume
		Location	Type
			Number

0 10 20 Metres

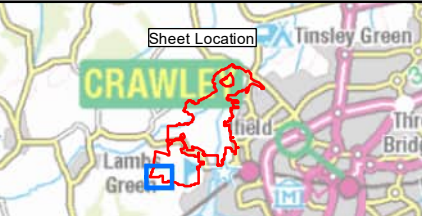
Service Layer Credits: Source: Esri, DigitalGlobe, GeoEye, Earthstar Geographics, CNES/Airbus DS, USDA, USGS, AeroGRID, IGN, and the GIS User Community
Contains OS data © Crown Copyright and database right 2018



- Legend**
- Site Boundary
 - All Breeding Bird Data (with BTO code)
 - Confirmed Breeder
 - Probable Breeder
 - Possible Breeder



Service Layer Credits: Source: Esri, DigitalGlobe, GeoEye, Earthstar Geographics, CNES/Airbus DS, USDA, USGS, AeroGRID, IGN, and the GIS User Community
Contains OS data © Crown Copyright and database right 2018



© Crown copyright and database rights 2018
Ordnance Survey 0100031673

01	S2	18-Jun-19	Initial Issue	PN	BM	MG
Rev	Status	Rev. Date	Purpose of revision	Drawn	Checked	Approved

Client

Designer

Registered office:
Arcadis House
34 York Way
London
N1 9AB

Coordinating office:
5th Floor, 401 Faraday Street
Richwood
Warrington
WA3 6GA

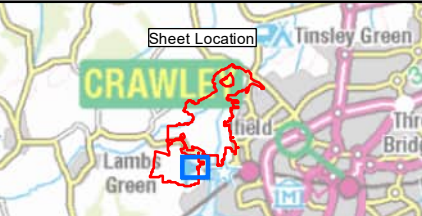
Project
Land West of Ifield

Drawing Title
Figure 4
Summary of All Birds Considered to be Breeding On-site
(Page 18 of 22)

	Status	S2	Revision	01
Scale	1:1,500	Date	18-Jun-19	
Drawn By	P. Nehete			
Checked By	B. Murray			
Approved By	M. Givan			
PINS No.				
Drawing number	RE-PIN	Original	Volume	Location
			Type	Draw Number



- Legend**
- Site Boundary
 - All Breeding Bird Data (with BTO code)
 - Confirmed Breeder
 - Possible Breeder
 - Not Breeding



© Crown copyright and database rights 2018
Ordnance Survey 0100031673

01	S2	18-Jun-19	Initial Issue	PN	BM	MG
Rev	Status	Rev. Date	Purpose of revision	Drawn	Chkd	Apprvd

Client

Designer

Registered office:
Arcadis House
34 York Way
London
N1 9AB

Coordinating office:
5th Floor, 401 Faraday Street
Richwood
Warrington
WA3 6GA

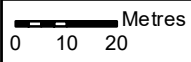
Project

Land West of Ifield

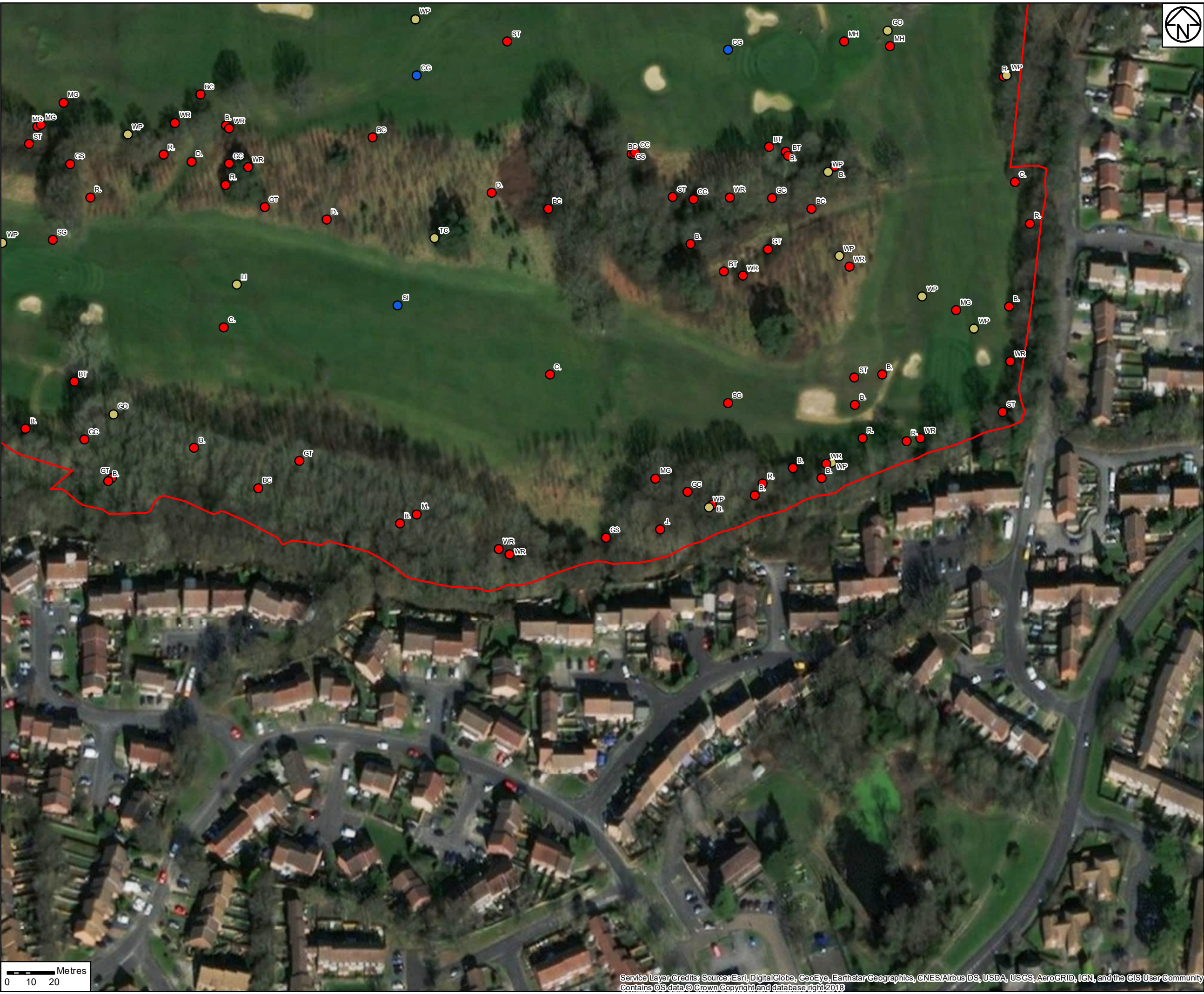
Drawing Title

Figure 4
Summary of All Birds Considered to be Breeding On-site
(Page 19 of 22)

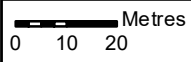
Status	S2	Revision	01
Scale	1:1,500	Date	18-Jun-19
Drawn By	P. Nehete		
Checked By	B. Murray		
Approved By	M. Givan		
PINS No.			
Drawing number	RE-PIN	Originator	Volume
		Location	Type
			Number



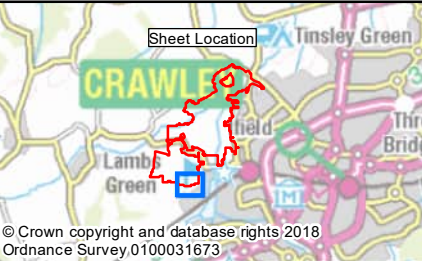
Service Layer Credits: Source: Esri, DigitalGlobe, GeoEye, Earthstar Geographics, CNES/Airbus DS, USDA, USGS, AeroGRID, IGN, and the GIS User Community
Contains OS data © Crown Copyright and database right 2018



- Legend**
- Site Boundary
 - All Breeding Bird Data (with BTO code)
 - Confirmed Breeder
 - Possible Breeder
 - Not Breeding



Service Layer Credits: Source: Esri, DigitalGlobe, GeoEye, Earthstar Geographics, CNES/Airbus DS, USDA, USGS, AeroGRID, IGN, and the GIS User Community
Contains OS data © Crown Copyright and database right 2018



01	S2	18-Jun-19	Initial Issue	PN	BM	MG
Rev	Status	Rev. Date	Purpose of revision	Drawn	Chkd	Appvd

Client

Homes England

Designer

ARCADIS Design & Draw Review

Registered office:
Arcadis House
34 York Way
London
N1 9AB

Coordinating office:
5th Floor, 401 Faraday Street
Richwood
Warrington
WA3 6GA

Project

Land West of Ifield

Drawing Title

Figure 4
Summary of All Birds Considered to be Breeding On-site
(Page 21 of 22)

Status	S2	Revision	01
Scale	1:1,500	Date	18-Jun-19
Drawn By	P. Nehete		
Checked By	B. Murray		
Approved By	M. Givan		
PINS No.			
Drawing number	RE-PIN	Originator	Volume
		Location	Type
			Number



Legend

- Site Boundary
- Confirmed Breeder
- Possible Breeder

All Breeding Bird Data (with BTO code)

© Crown copyright and database rights 2018
Ordnance Survey 0100031673

01	S2	18-Jun-19	Initial Issue	PN	BM	MG
Rev	Status	Rev. Date	Purpose of revision	Drawn	Chk'd	Apprv'd

Client

Homes England

Designer

ARCADIS

Registered office:
Arcadis House
34 York Way
London
N1 9AB

Coordinating office:
5th Floor, 401 Farsley Street
Birkwood
Warrington
WA3 6GA

Project

Land West of Ifield

Drawing Title

Figure 4
Summary of All Birds Considered to be Breeding On-site
(Page 22 of 22)

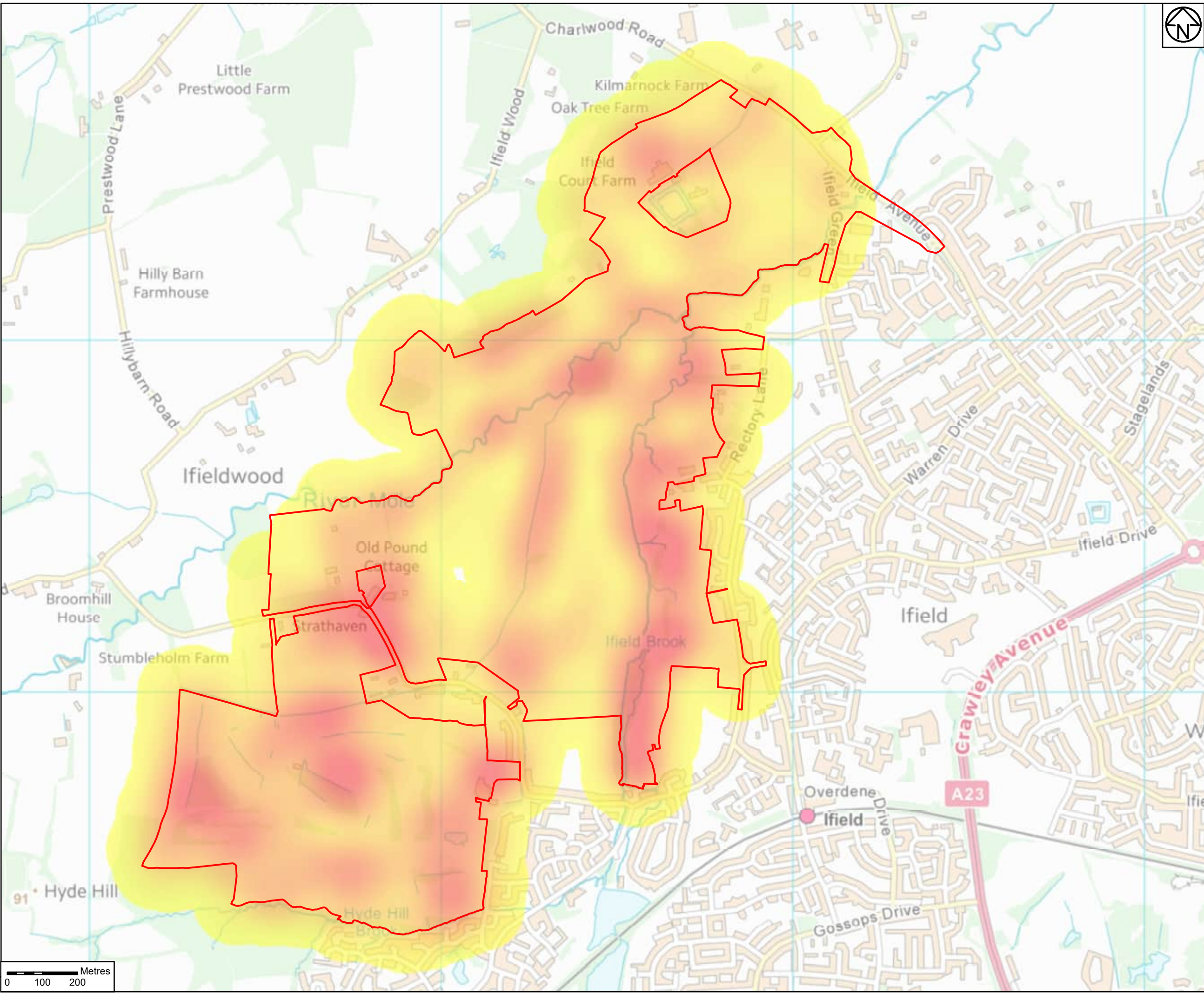
Status	S2	Revision	01
Scale	1:1,500	Date	18-Jun-19
Drawn By	P. Nehete		
Checked By	B. Murray		
Approved By	M. Givan		
PINS No.			

Drawing number

HE PIN | Originator | Volume | Location | Type | Date | Number

Figure 5: Heat map of breeding bird activity recorded on the site

N.B. All BTO codes used in this map are presented in Appendix G.



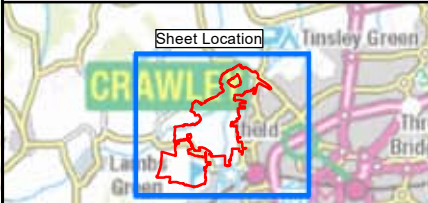
Legend

Site Boundary

Breeding Bird Heatmap

High

Low



© Crown copyright and database rights 2018
Ordnance Survey, 0100031673

Rev	Status	Rev. Date	Purpose of revision	Drawn	Chk'd	Appr'd
01	S2	05/20/2019	Initial Issue	PN	BM	MG

Client

Homes England

Designer

ARCADIS

Registered office:
Arcadis House
34 York Way
London
N1 9AB

Coordinating office:
5th Floor, 401 Faraday Street
Birmingham
B3 6GA

Project

Land West of Ifield

Drawing Title

Figure 5
Heatmap - Birds recorded during the 2018
Breeding Bird Surveys

Status	S2	Revision	01
Scale	1:10,000	Date	05/20/2019
Drawn By	P. Nehela		
Checked By	B. Murray		
Approved By	M. Girvan		
PHS No.			
Drawing number	HE-PN	Originator	Volume
		Location	Type
			Block
			Number

0 100 200 Metres

Figure 6: Buildings assessed for Barn Owl roosting and nesting potential





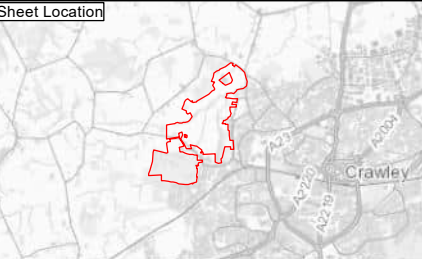
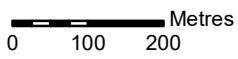
Legend

Redline Boundary

Roosting or Nesting Potential

● No

● Yes



01	S2	25/10/19	Initial Issue	PN	BM	MG
Rev	Status	Rev. Date	Purpose of revision	Drawn	Chk'd	Apprv'd

Client


Homes
England

Designer


ARCADIS
Registered office:
Arcadis House
34 York Way
London
N1 9AB

Coordinating office:
5th Floor, 401 Faraday Street
Birchwood
Warrington
WA3 6GA

Project

Land West of Ifield

Drawing Title

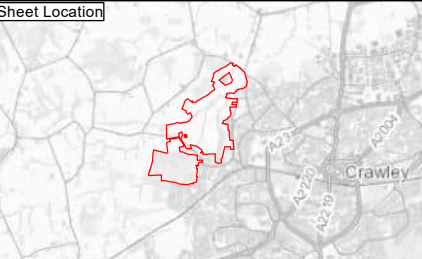
Figure 6
Buildings Assessed for Bar Owl Roosting
or Nesting Potential

Status	S2	Revision	01
Scale	1:10,000	Date	25/10/19
Drawn By	P. Nehete	Checked By	B. Murray
Approved By	M. Givan	PINS No.	
Drawn number	HE-PIN	Originator	Volume
Location	Type	Block	Number

Figure 7: Roosting and nesting potential assessment



- Legend**
- Redline Boundary
 - Evidence of temporary roosting, potential for roosting, potential for breeding (Blue dot)
 - Evidence of temporary roosting, potential for roosting, no potential for breeding (Magenta dot)
 - No evidence of temporary roosting, potential for roosting, potential for breeding (Green dot)
 - No evidence of temporary roosting, potential for roosting, no potential for breeding (Yellow dot)
 - No potential for roosting or breeding (Grey dot)



01	S2	13/11/19	Initial Issue	PN	BM	MG
Rev	Status	Rev. Date	Purpose of revision	Drawn	Chk'd	Appr'd

Client

Designer

Registered office:
Arcadis House
34 York Way
London
N1 9AB

Coordinating office:
5th Floor, 401 Faraday Street
Birchwood
Warrington
WA3 6GA

Project

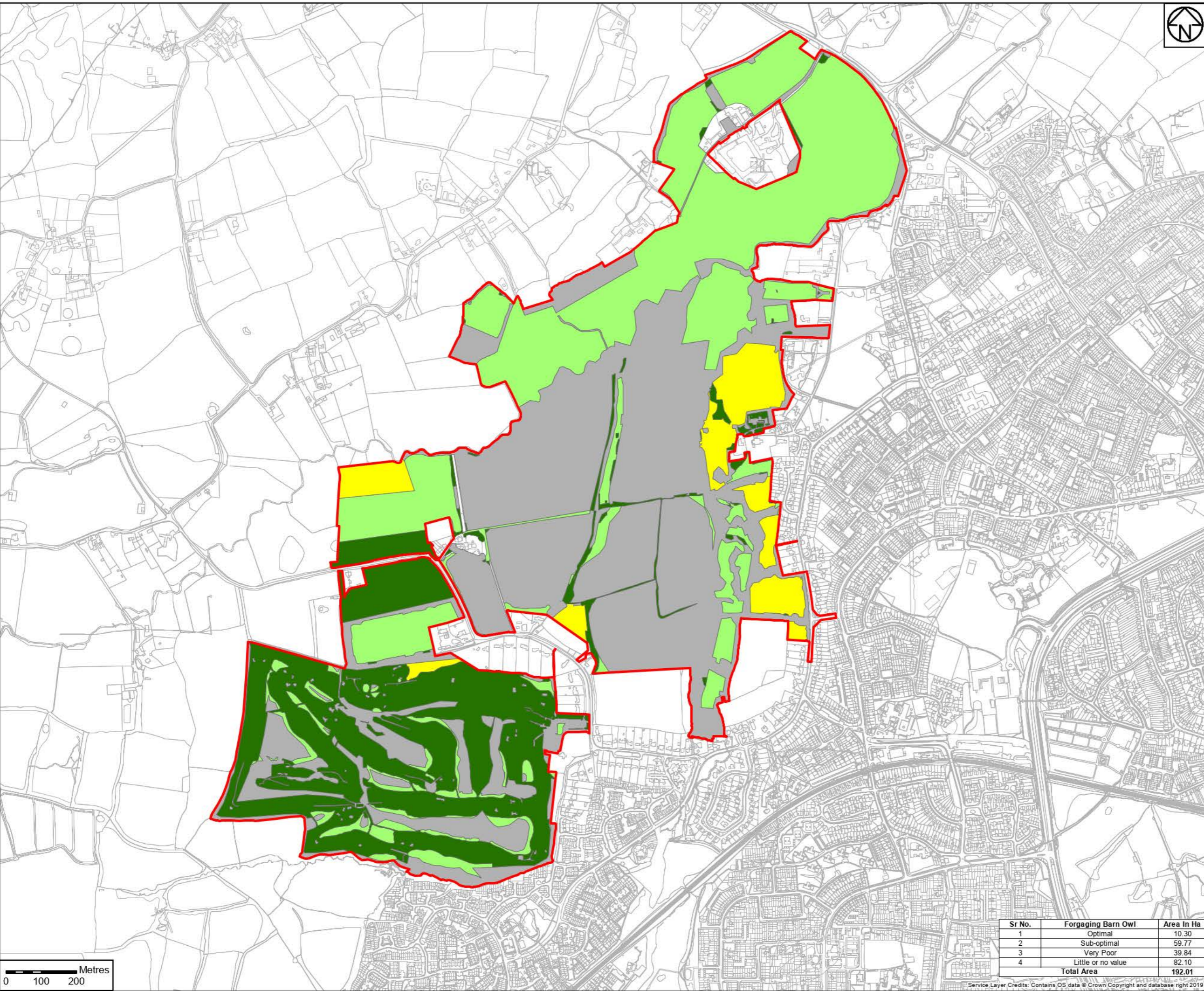
Land West of Ifield

Drawing Title

Figure 7
Roosting and Nesting Potential Assessment

Status	S2	Revision	01
Scale	1:10,000	Date	13/11/19
Drawn By	P. Nehete	Checked By	B. Murray
Approved By	M. Givan	PINS No.	
Drawing number	HC-PIN	Originator	Volume
Location	Type	Block	Number

Figure 8: Barn owl foraging habitat assessment



Legend

Redline Boundary

Foraging Barn Owl

Optimal

Sub-optimal

Very Poor

Little or no value



01	S2	07/11/19	Initial Issue	PN	BM	MG
Rev	Status	Rev. Date	Purpose of revision	Drawn	Chk'd	Apprv'd

Client

Designer

Registered office:
Arcadis House
34 York Way
London
N1 9AB

Coordinating office:
5th Floor, 401 Paradise Street
Birchwood
Warrington
WA3 6GA

Project

Land West of Ifield

Drawing Title

Figure 8
Calculate Habitat Types

Status	S2	Revision	01
Date	07/11/19		

Sr No.	Foraging Barn Owl	Area In Ha
1	Optimal	10.30
2	Sub-optimal	59.77
3	Very Poor	39.84
4	Little or no value	82.10
Total Area		192.01

0 100 200 Metres