

## Properties local to Sir Roberts – Examples of Two Storey Properties



Figure 1 - Diagram of local 2 storey properties

### **Bucks Farm, Crays Lane**

Lies approx 75m south from boundary of the Site.

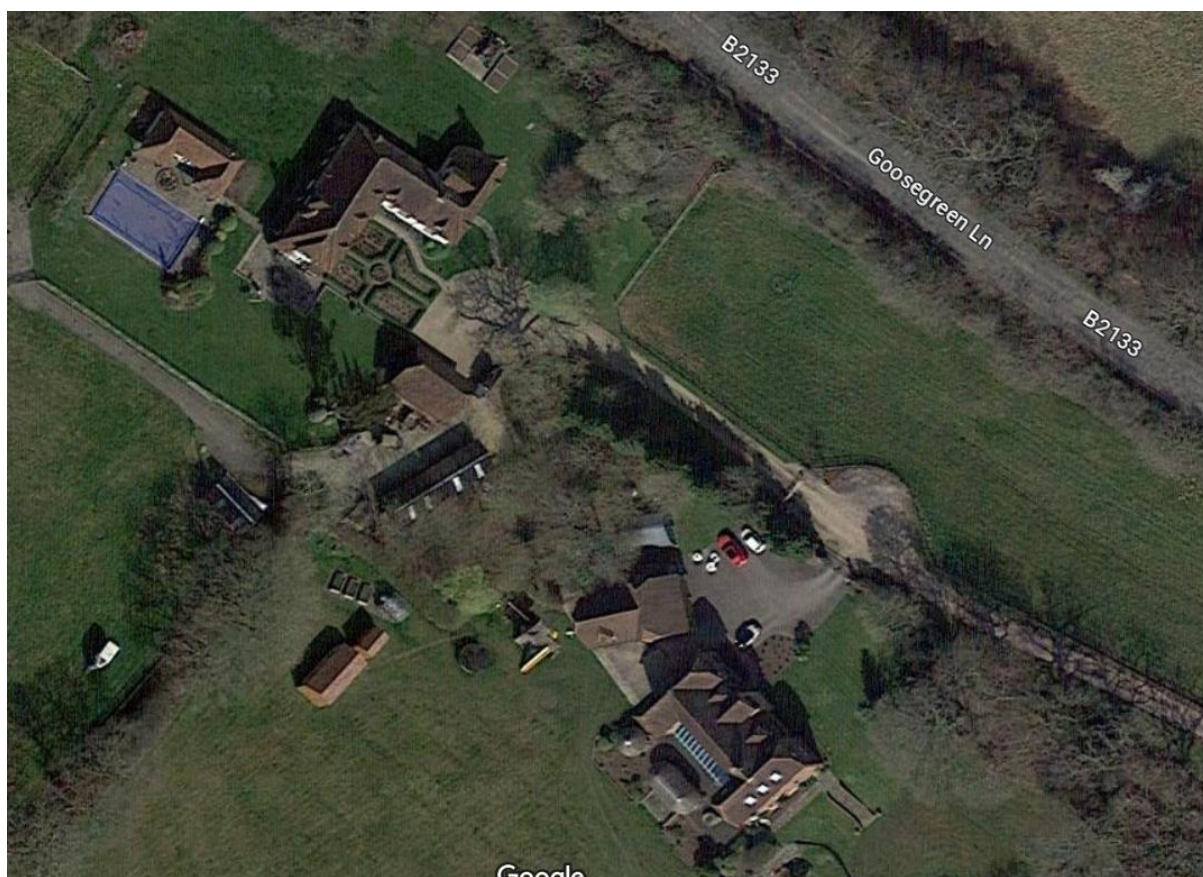
Substantial 2/2.5 storey residential property.



*Figure 2 - Bucks Farm - Front Elevation (It has been subject to a substantial 2 storey side extension since this photo)*



*Figure 3 - Bucks Farm – Rear Elevation (It has been subject to a substantial 2 storey side extension since this photo)*



*Figure 4 – Bucks Farm aerial image (includes two storey side extension)*



### **The Green, Goose Green Lane**

Lies approx 95m south-west from boundary of the Site.

Substantial 2 storey residential property.



*Figure 5 - Image of The Green, Goose Green Lane*



*Figure 6 - Aerial image of The Green*

### **Summers Place, Crays Lane**

Lies approx 95m south-west from boundary of the Site.

Substantial 2 storey residential property. Previously a Bungalow. Extended under DC/17/2792.



*Figure 7 - Photo of Summers Place Crays Lane (previously a single storey bungalow)*



**Dan Farm, Goose Green Lane**

Lies approx 930m north-west from boundary of the Site.

Substantial 2 storey residential property.



*Figure 8 - Photo of Dan Farm, front elevation.*



*Figure 9 - Photo of Dan Farm, rear elevation.*

## Laybrook Farm

Lies approx 730m north-west from boundary of the Site.

Substantial 2 storey residential property. Constructed under planning ref. T/25/02 and extended under DC/16/2892.



Figure 10 - Aerial View of Laybrook Farm.

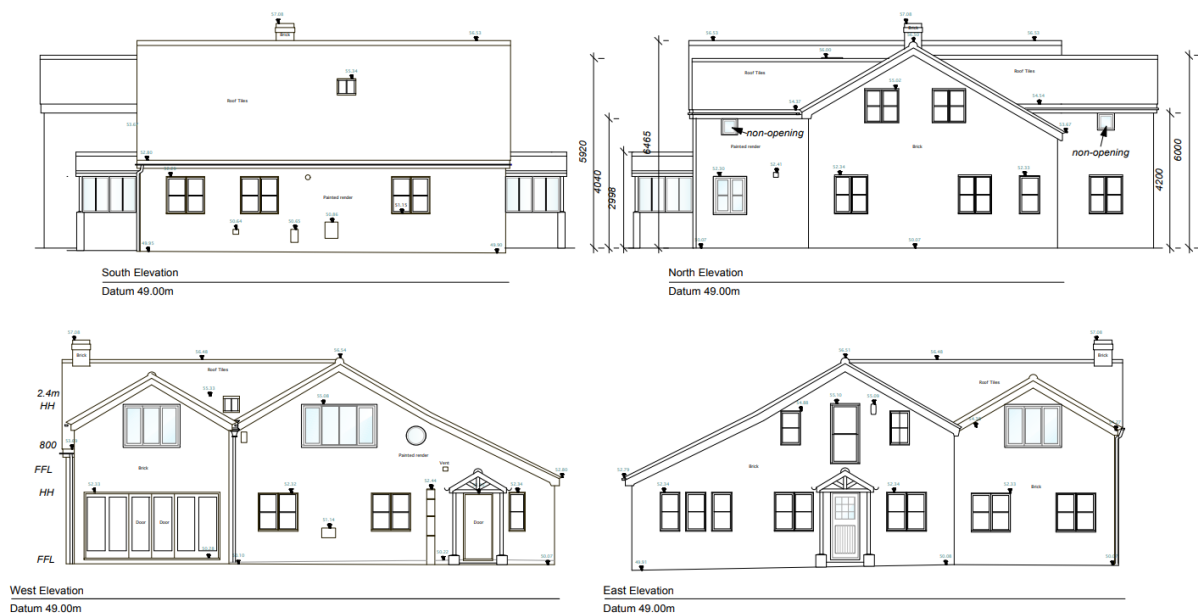


Figure 11 - Laybrook Farm, elevation drawings