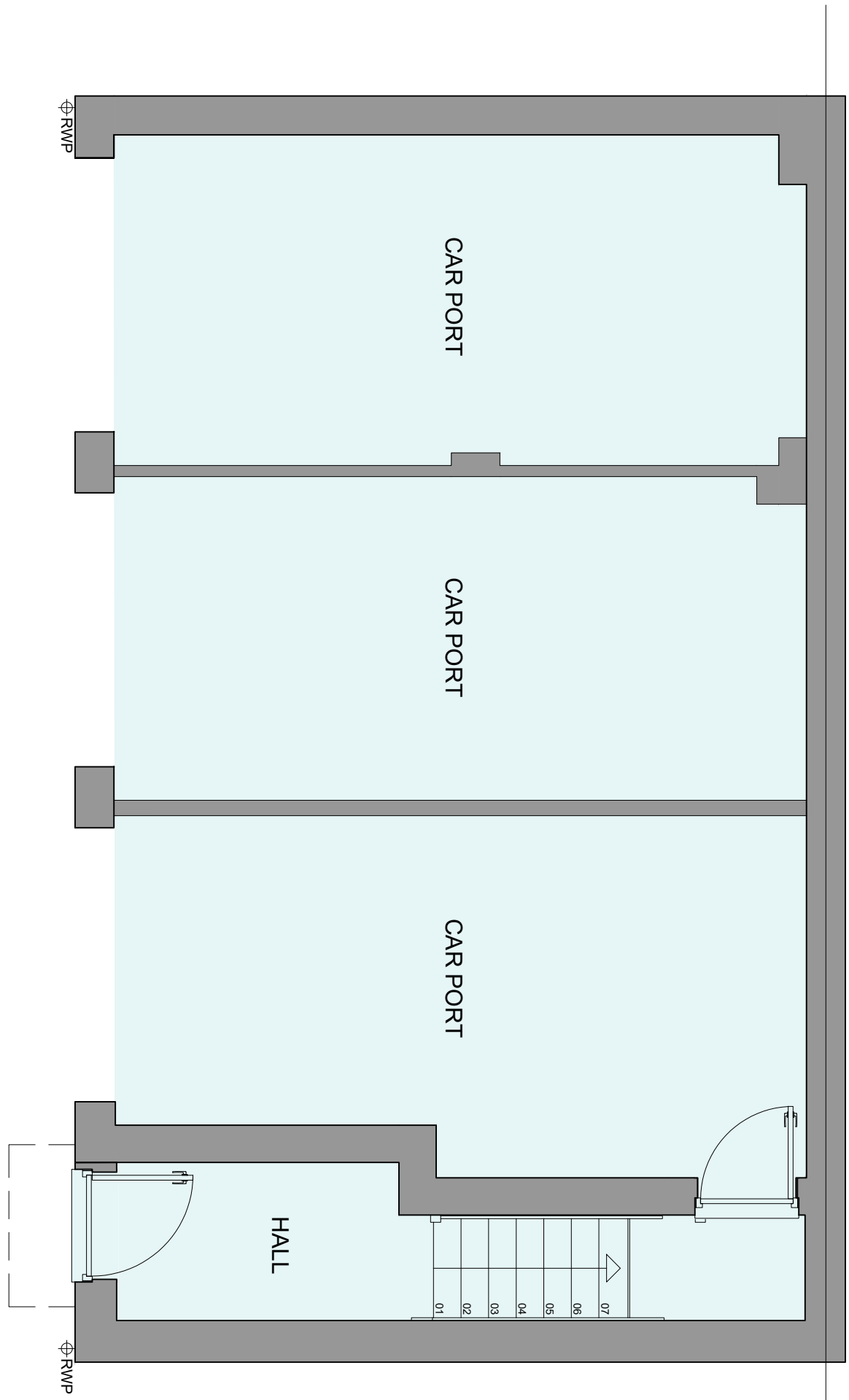
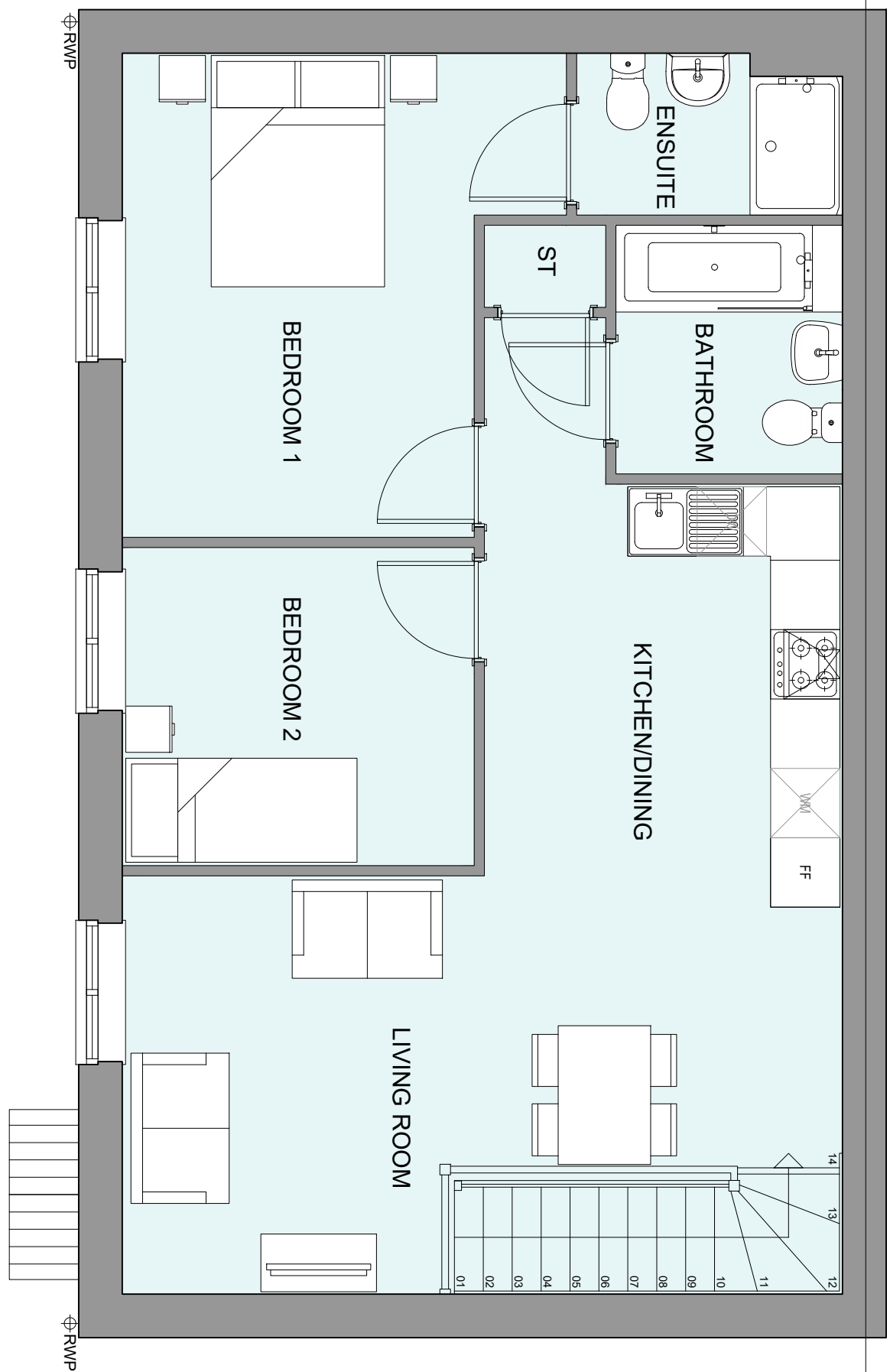


WICKHURST GREEN, BROADBRIDGE HEATH
PROPOSED HOUSETYPE PLANS - HT "23" VARIANT "V1"

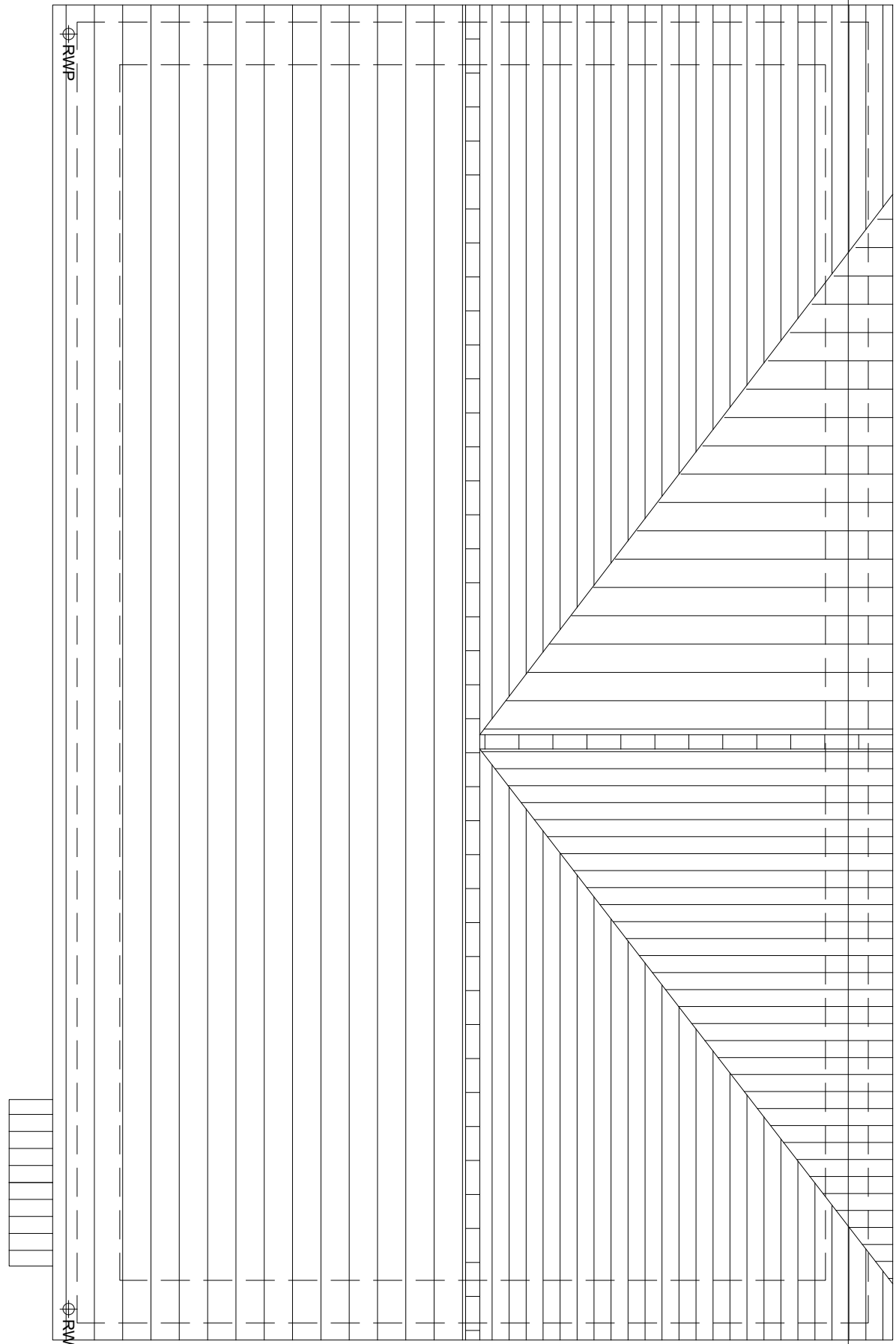
HOUSE TYPE VARIATIONS	
PLAT NUMBERS:	AS DRAWN - 22
	HANDED -
MATERIALS:	<div>WALLS<ul style="list-style-type: none">- BRICK</div> <div>WALLS TREATMENT<ul style="list-style-type: none">- TIMBER</div> <div>ROOF<ul style="list-style-type: none">- CORRUGATED IRON</div> <div>OSGISCHE WINDOWS<ul style="list-style-type: none">- UPVC</div> <div>EXTERNAL DOORS<ul style="list-style-type: none">- UPVC</div> <div>OSGISCHE DOORS<ul style="list-style-type: none">-</div> <div>ROOF<ul style="list-style-type: none">- TILE</div> <div>GUTTERING & DOWNPIPES<ul style="list-style-type: none">- UPVC</div> <div>FASCIA & SOFFITS<ul style="list-style-type: none">- UPVC</div>
WINDOW OMISSION:-	PLOTS:-
AREA OF UNIT (G.A.):	74 Sqm
B. RES PART M.	79 Sqft
NSS COMPLANT:-	M4(1)
YES	YES
CHARACTER AREA:	WESTERN AREA



GROUND FLOOR PLAN



FIRST FLOOR PLAN



ROOF PLAN

Project:

WICKHURST GREEN,
BROADBRIDGE HEATH

Client:

VISTRY (MAJOR PROJECTS)

Drawer:

PROPOSED HOUSETYPE PLANS
HT - '231' VARIANT 'V-1'

A	08.09.25	Planning Issue	
Rev	0101	Amendment	
		Initials	

PLANNING ISSUE

24.1945.4000

Scale@A1: 1:50 Date: APR 25 Drawn: JC Checked: CH

FINC Architects Ltd

FINC Architects Ltd
61-63 New London Road | Chelmsford | Essex | CM2 0ND
T: +44 (0)1245 933986
W: www.fincarchitects.com
E: company@fincarchitects.com

www.clinicaltrials.com
company@clinicaltrials.com

© FIMC Architects Limited holds the copyright to all the information contained within this document and their written consent must be obtained before copying or using the data other than for the purpose it was originally supplied.

Dis All dimensions and measurements to be checked on site.
Do not scale from this drawing. This drawing is to be printed in colour.

