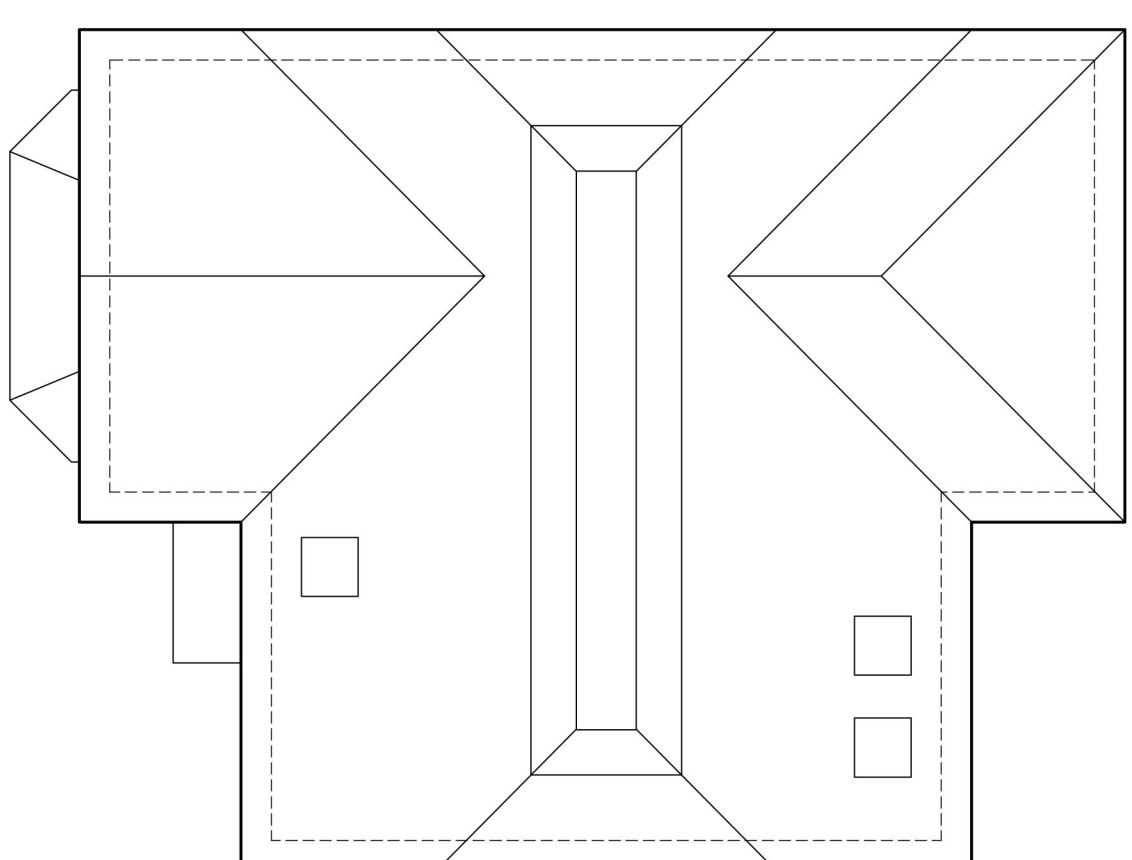


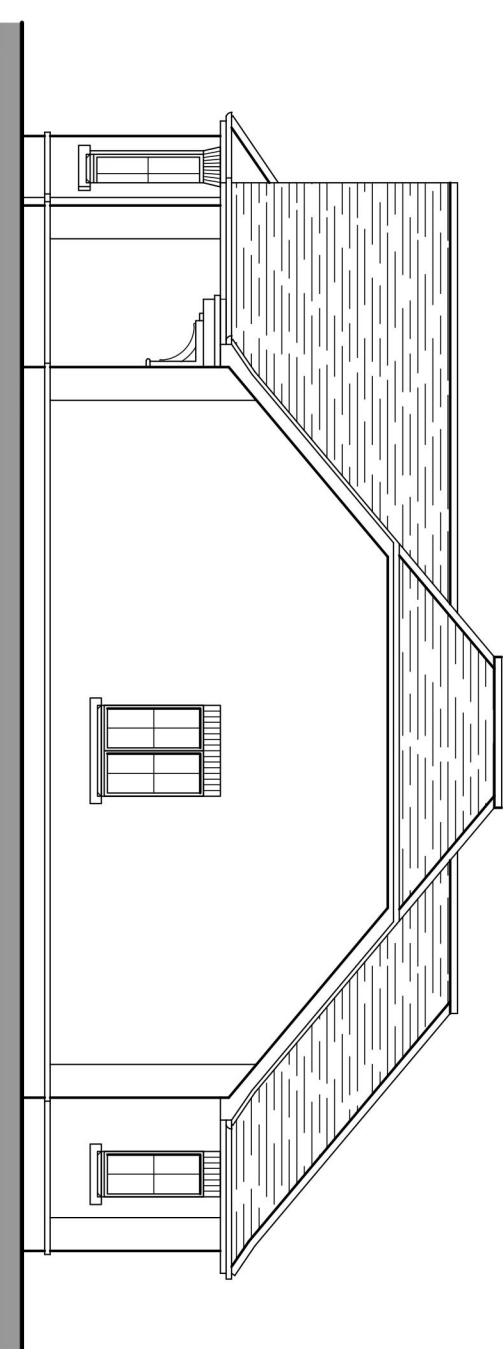
Ground Floor Plan  
GIA - 118.7m<sup>2</sup> (1,278ft<sup>2</sup>)  
TOTAL GIA - 118.7m<sup>2</sup> (1,278ft<sup>2</sup>)



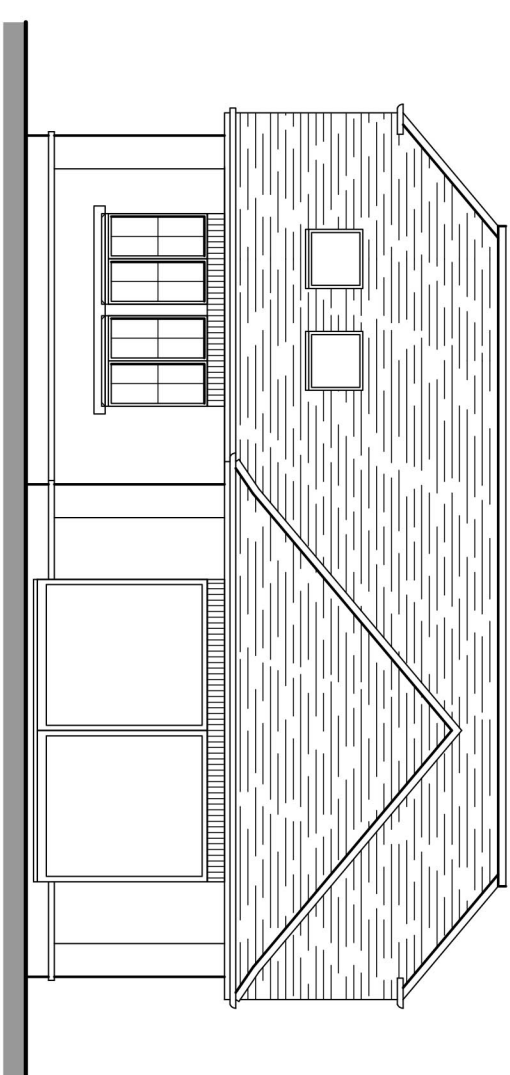
### Front Elevation



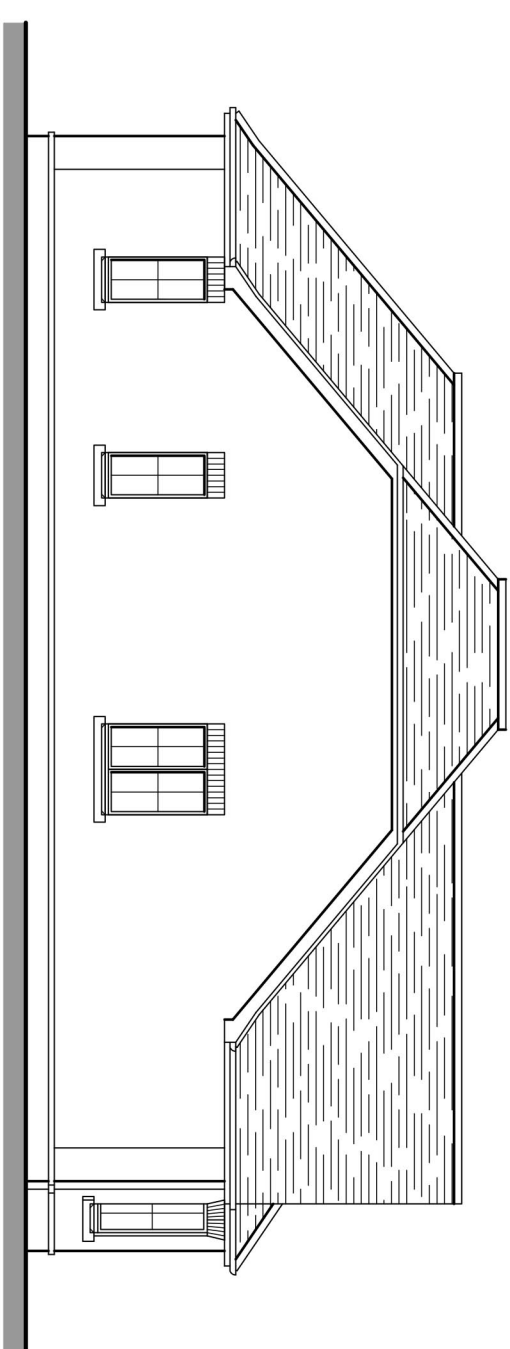
## Roof Plan



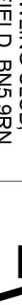
### Side Elevation



### Rear Elevation



### Side Elevation

|  |      |           |                       |      |           |  |
|--|------|-----------|-----------------------|------|-----------|--|
| REV.   | DATE | REVISIONS | REV.                  | DATE | REVISIONS | <div><div>:WENY-20</div><div>: Architectural</div><div>1:50000</div><div></div></div> |
|  |      |           |                       |      |           |  |
|  |      |           |                       |      |           |  |
|  |      |           |                       |      |           |  |
| © COPYRIGHT EXISTS ON THE DESIGN AND INFORMATION SHOWN ON THIS DRAWING   |      |           |                       |      |           |  |
| This drawing is the sole work of the Architect and is to be used for the project and for no other purpose. All other uses, including reproduction, are prohibited. The Architect is not responsible for any errors or omissions. The drawings are to be used in conjunction with other relevant materials. All drawings are to be checked by the Architect and the Engineer before construction. The drawings are to be used in conjunction with other relevant materials. |      |           |                       |      |           |  |
| CLIENT   |      |           | PROJECT               |      |           |  |
| BRUCLAND DEVELOPMENTS  |      |           | BRUCLAND DEVELOPMENTS |      |           |  |
| SCALE  |      |           | DRAWING               |      |           |  |
| 1:100 (A) ORIGINAL   |      |           | PLANS & ELEVATIONS    |      |           |  |
| DRAWN  |      |           | DRAWING NO.           |      |           |  |
| Cdmo   |      |           | 111                   |      |           |  |
| DATE   |      |           | REVISION              |      |           |  |
| OCT-25   |      |           | A                     |      |           |  |
| 25 - P0315   |      |           |                       |      |           |  |