

Key:

- Site Boundary
- 1km Study Area

Archaeological Monuments

Areas

- Roman
- Medieval
- Post Medieval

Points

- Prehistoric
- Roman
- Medieval
- Post Medieval
- Modern
- Unknown

0 50 100 150 200 250 m

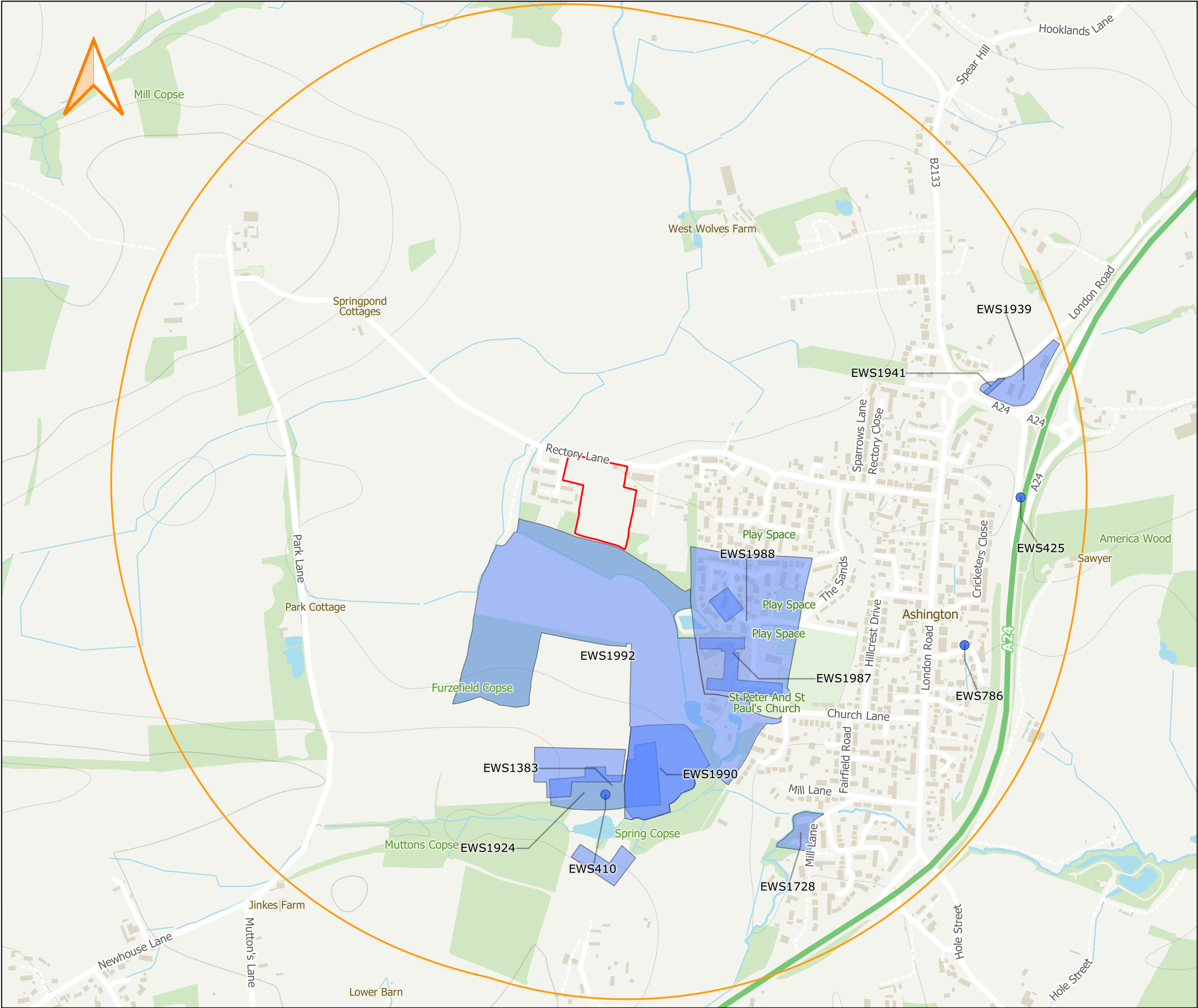
Land East of Mousdell Close, Ashington, Pulborough, RH20 3GS

HCUK GROUP

Figure 6

Archaeological Monuments recorded on the WSHR within the 1km study area

Project No.11336A | 24/7/2025 | Drawn By: EC



Key:

- Site Boundary
- 1km Study Area

Previous Archaeological Investigations

- Points
- Areas

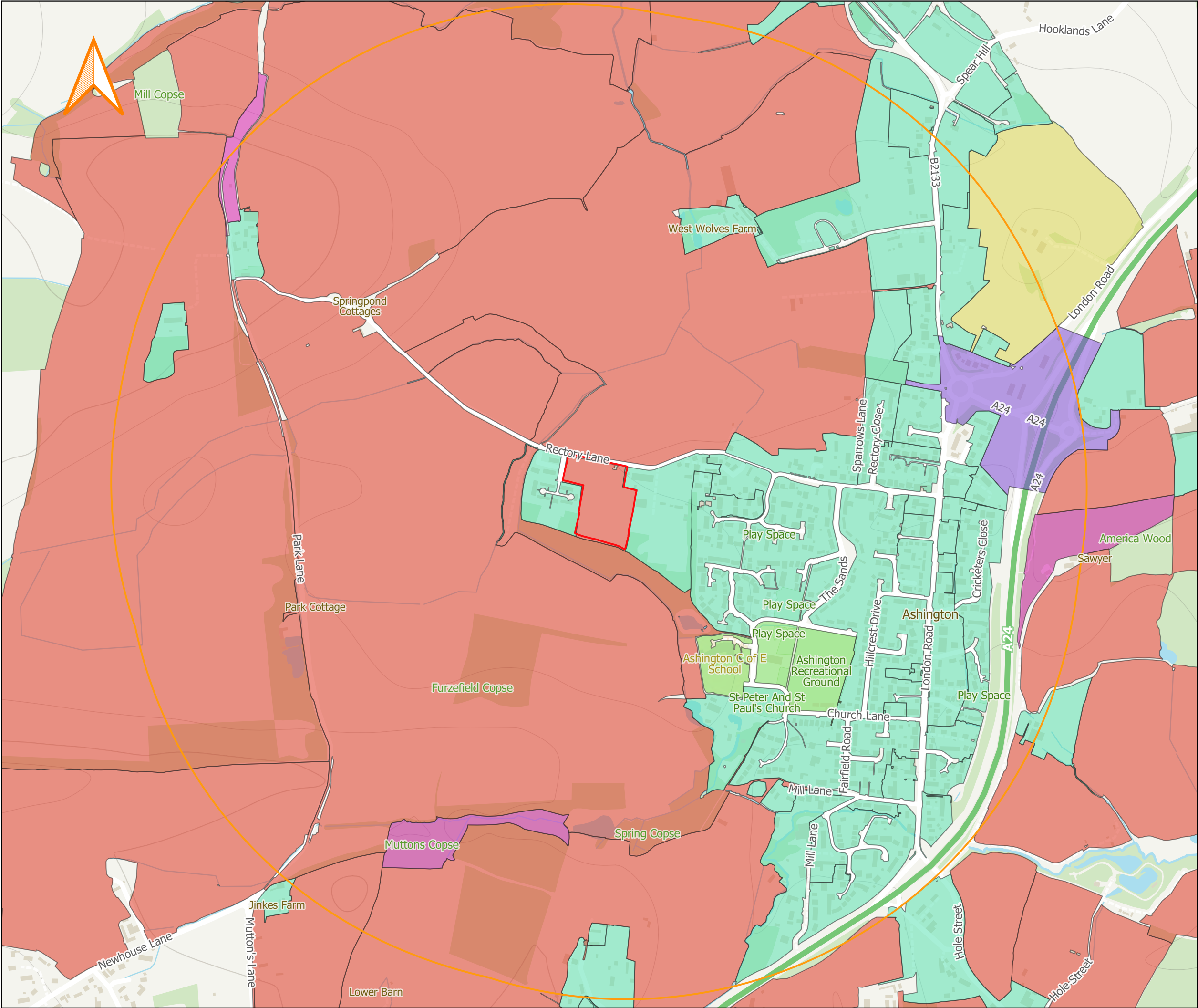
0 50 100 150 200 250 m

**Land East of Mousdell Close,
Ashington, Pulborough,
RH20 3GS**

HCUK
GROUP

Figure 7
Previous Archaeological
Investigations recorded on the
WSHER within the 1km study
area

Project No.11336A | 24/7/2025 | Drawn By: EC



Key:

- Site Boundary
- 1km Study Area

Historic Landscape Characterisation Broad Types

- Communications
- Designed Landscapes
- Fieldscapes
- Recreation
- Settlement
- Woodland

0 50 100 150 200 250 m

Land East of Mousdell Close, Ashington, Pulborough, RH20 3GS

HCUK GROUP


Figure 8

Historic Landscape Characterisation (HLC) Types recorded on the WSHR within the 1km study area


Project No.11336A | 24/7/2025 | Drawn By: EC



Key:

 Site Boundary

0 10 20 30 40 50 m



**Land East of Mousdell
Close, Ashington,
Pulborough, RH20 3GS**


Figure 9

LiDAR Coverage of the Site


Project No. 11336A | 24/7/2025 | Drawn By: EC



Key:

 Site Boundary

0 10 20 30 40 50 m



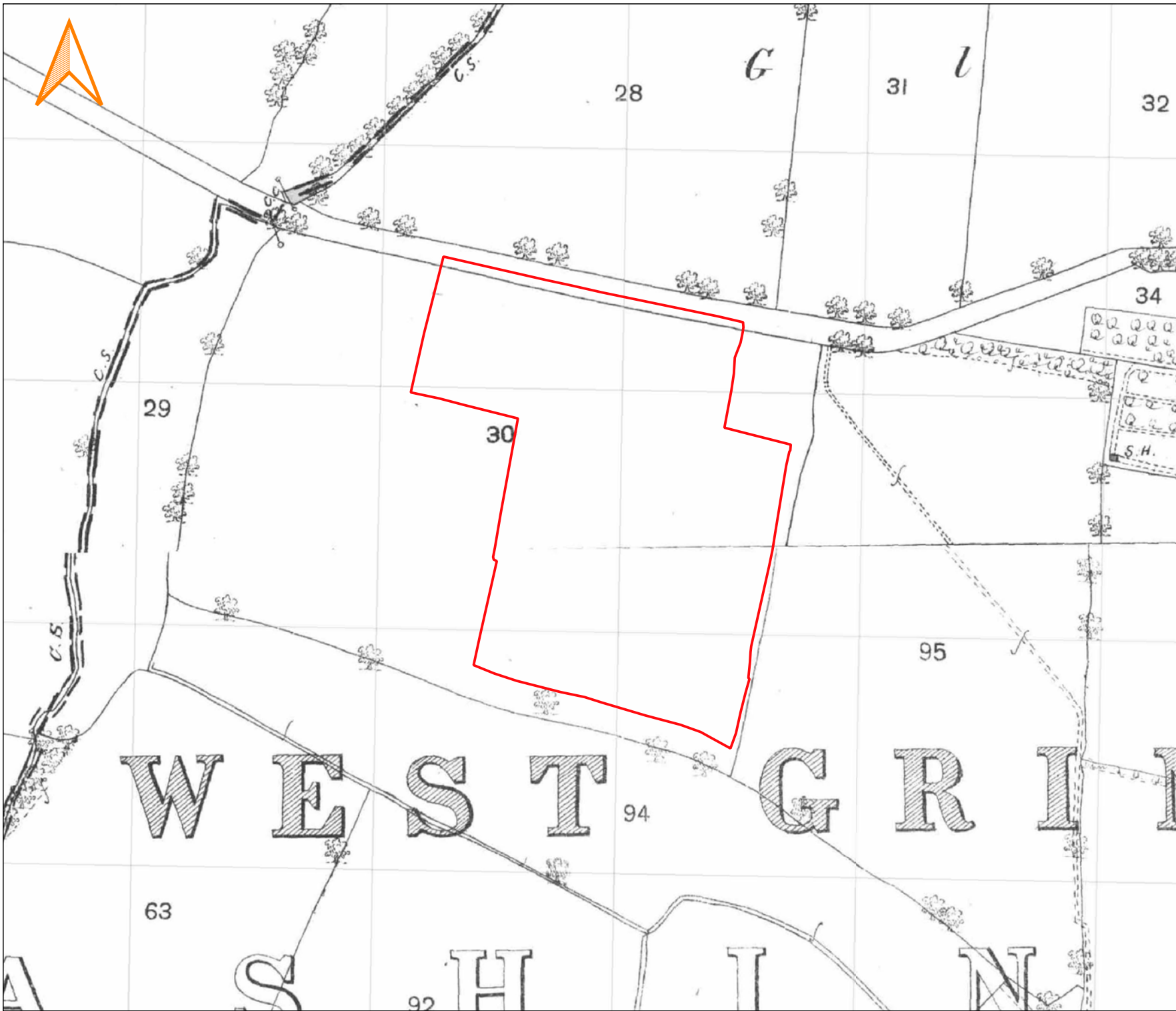


**Land East of Mousdell
Close, Ashington,
Pulborough, RH20 3GS**


**Figure
10**

1847 Ashington Parish Tithe
Plan

Project No. 11336A | 24/7/2025 | Drawn By: EC



Key:

 Site Boundary

0 10 20 30 40 50 m

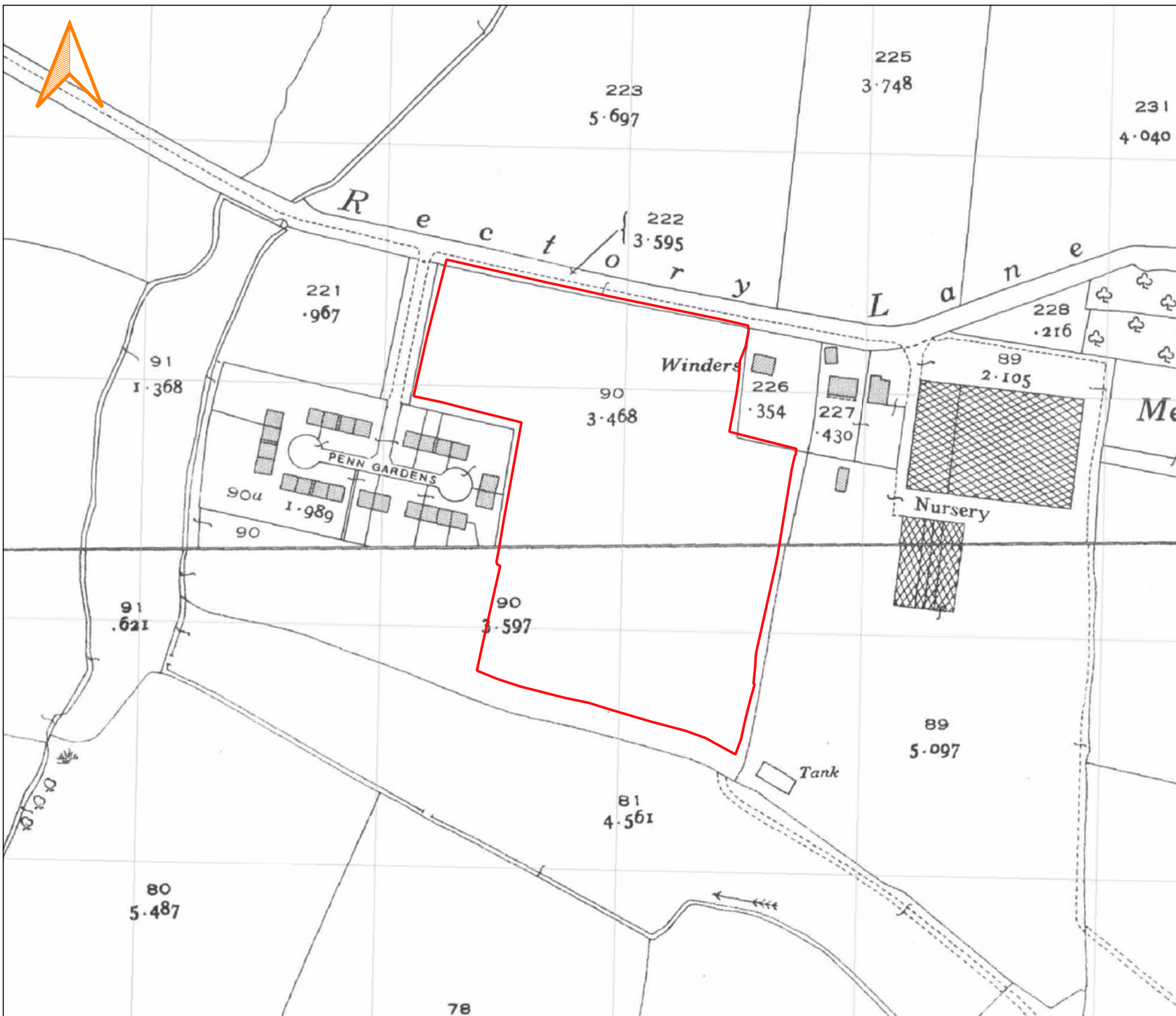
**HCUK**
GROUP

**Land East of Mousdell
Close, Ashington,
Pulborough, RH20 3GS**

Figure 11

1875 1:2500 County Series
Ordnance Survey map

Project No. 11336A | 24/7/2025 | Drawn By: EC



Key:

Site Boundary

0 10 20 30 40 50 m

HCUK GROUP

Land East of Mousdell Close, Ashington, Pulborough, RH20 3GS

Figure 12

1837-1839 1:2500 County Series Ordnance Survey map

Project No. 11336A | 24/7/2025 | Drawn By: EC



Key:

 Site Boundary

0 10 20 30 40 50 m



**Land East of Mousdell
Close, Ashington,
Pulborough, RH20 3GS**

Figure 13

2025 Satellite Image of the
Site

Project No. 11336A | 24/7/2025 | Drawn By: EC

Appendix 1: Proposed Development Plan

Accommodation Schedule

Affordable Dwellings (26no. - 35.1%)				
Affordable Rent				
4no.	1-Bedroom Flats	Up to 2.5 Storeys	Blocks A and B	540sqft
4no.	1-Bedroom Flats - M4(3)	Up to 2.5 Storeys	Blocks A and B	660sqft
8no.	2-Bedroom Flats	Up to 2.5 Storeys	Blocks A and B	660sqft
1no.	3-Bedroom Townhouses	2.5 Storeys	Semi / Terraced	1145sqft
1no.	3-Bedroom Townhouses	2.5 Storeys	Semi / Terraced	1271sqft

Shared Ownership				
1no.	1-Bedroom Flats	2 Storeys	Block C	540sqft
1no.	1-Bedroom Flats	2 Storeys	Block C	592sqft
2no.	2-Bedroom Houses	2 Storeys	Semi-Detached	855sqft
2no.	3-Bedroom Houses	2 Storeys	Semi-Detached	1003sqft
2no.	3-Bedroom Townhouses	2.5 Storeys	Semi / Terraced	1145sqft

Open Market Dwellings (48no. - 64.9%)				
2no.	1-Bedroom Flats	2 Storeys	Block D/E	540sqft
2no.	1-Bedroom Flats	2 Storeys	Block D/E	592sqft
8no.	2-Bedroom Houses	2 Storeys	Semi-Detached	855sqft
13no.	3-Bedroom Houses	2 Storeys	Semi-Detached	1003sqft
8no.	3-Bedroom Houses	2.5 Storeys	Semi-Detached	1145sqft
5no.	4-Bedroom Houses	2 Storeys	Detached	1240sqft
1no.	4-Bedroom Houses	2 Storeys	Detached	1261sqft
2no.	3-Bedroom Houses	2.5 Storeys	Semi-Detached	1271sqft
1no.	4-Bedroom Houses	2 Storeys	Detached	1285sqft
2no.	4-Bedroom Houses	2.5 Storeys	Semi-Detached	1340sqft
2no.	4-Bedroom Houses	2 Storeys	Detached	1425sqft
2no.	4-Bedroom Houses	2 Storeys	Detached	1933sqft

Total; 74 Dwellings [2.19 Ha approx. to Overall Ownership Line - 33.78 Dw/Ha]

Car Parking Generally; 1 space per 1-Bedroom Flat
1.5 spaces per 2-Bedroom Flat
2-3 spaces per 2 and 3-Bedroom House (incl. open car barns)
3 spaces per 4-Bedroom House (incl. garages)
23 visitor spaces (1 per 3.26 dwellings)

A 25.07.25 Updated Site Layout CV KE
Rev Date Revision Details Dr Ch

ECE Architecture
www.ecearchitecture.com
London: 76 Great Suffolk Street London, SE1 0BL
T 0207 928 2773 E london@ecearchitecture.com
Sussex: 64 - 68 Brighton Road, Worthing West Sussex, BN11 2EN
T 01903 248777 E sussex@ecearchitecture.com
Bristol: Westworks, Beacon Tower Colston Street, Bristol, BS1 4XE
T 0117 214 1101 E bristol@ecewestworks.com

Client's Name
Rocco Homes

Job Title
Land East of Penn Gardens, Ashington, West Sussex

Drawing Title
Proposed Site Layout

Scale
1:500 @ A1 / 1:1000 @ A3
metres 10 20 30 40 50

Drawn CV KE 16.07.25
Checked KE Date

Job No 7578 Drawing No PL01 Rev A

Status
APPROVAL

CAD Plot date: 25/07/2025 - 14:22:22 7578-site.dwg

