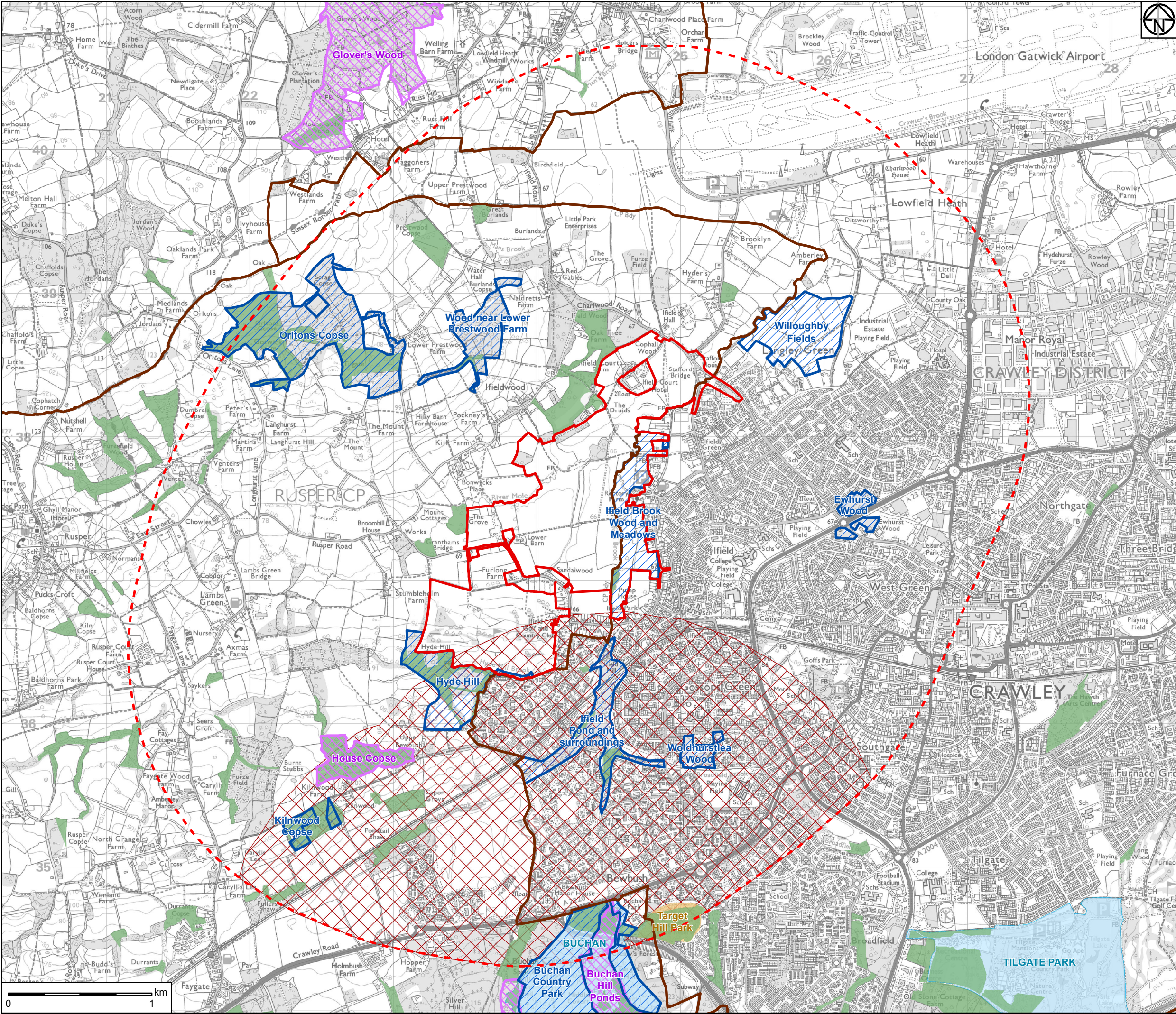
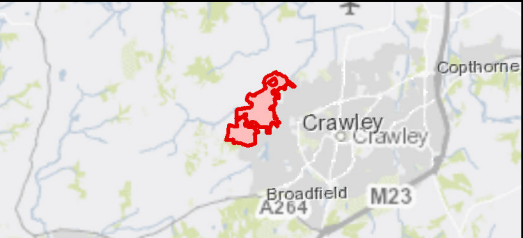


Figure 2: Statutory and Non-Statutory Designated Sites Location Plan



Notes:
Service Layer Credits: Contains OS data © Crown Copyright and database right 2018
Esri, HERE, DeLorme, MapmyIndia, © OpenStreetMap contributors, and the GIS user community

- Legend:
- Application Site Boundary
 - 2km Study Area
 - Local Authority Boundary
 - Ancient Woodland
 - Local Wildlife Sites
 - Country Parks
 - Local Nature Reserve
 - Sites of Special Scientific Interest (SSSI)
 - SSSI Impact Zone



P01	13/02/19	First Issue	MA	JN	XX
Rev	Date	Description	Drawn	Check	Approv

Client

Homes England

HOMES ENGLAND
PROJECT:
LAND WEST OF IFIELD

Site

Land West of ifield

Client

Homes England
Eastbrook
Shaftesbury Road
Cambridge
CB2 8BF

ARCADIS

Design & Consultancy
for natural and
built assets

Registered office:
Arcadis House
34 York Way,
London
N1 9AB

Coordinating office:
Arcadis Cymru House
Fortran Road
St Mellons, Cardiff
CF3 0EY

www.arcadis.com

TITLE:

Figure 2: Designated Sites

Drawn	R.Grubb	Date	13FEB19	Signed
Checked	J. Norman	Date	13FEB19	Signed
Approved	A.James	Date	13FEB19	Signed
Scale:	1:25,000	Datum:	AOD	
Original Size:	A3	Grid:	OS	
Suitability Code:	S2	Project Number:	10020728	
Suitability Description:	Issued for information			

Drawing Number:
10020728-ARC-XX-XX-DR-DE-7001

Revision:
P01

APPENDIX A: Legislation and Policy

Table 2: Summary of applicable legislation and policy

Ecological constraint	Rationale
European Designated sites (Special Areas of Conservation, Special Protection Areas and Ramsar Sites)	<p>Under the Conservation of Habitats and Species Regulations 2017 (Ref 15), an assessment is required where a plan or project may give rise to significant effects upon 'European Sites' including SACs, SPAs, and Ramsar sites. The process of assessing the implications of development on European Sites is known as Habitats Regulations Assessment (HRA).</p> <p>The initial stage of the HRA is Screening. This process initially identifies the likely impacts upon a European Site of a project or plan, either alone or in combination with other projects or plans, and considers whether these impacts may be significant.</p> <p>Natural England must be consulted in relation to the outcome of Screening. Unless the likelihood of a significant effect can be ruled out on the basis of objective information, then an Appropriate Assessment must be undertaken (this is the next stage of the HRA).</p>
Nationally Designated Sites (Sites of Special Scientific Interest)	<p>It is a legal requirement to apply for 'assent' from Natural England for any works which could potentially damage the flora, fauna or features for which a SSSI is designated (under the Wildlife and Countryside Act (1981) (as amended)) (Ref 16).</p>
Invasive Plants (Rhododendron, Giant Hogweed, Japanese Knotweed, certain species of Cotoneaster, Variegated Yellow Archangel, Canadian Waterweed, Japanese Rose, Monbretia, New Zealand Pigmyweed, Virginia Creeper, Water-fern etc.)	<p>It is an offence under Section 14 of Wildlife and Countryside Act 1981 (as amended) (Ref 16) to cause plants listed in Schedule 9 of this act to grow in the wild.</p> <p>Material contaminated with these species is classified as controlled waste under the Environmental Protection Act 1990 and should therefore be disposed of in an appropriately licensed landfill site.</p>
European protected species (great crested newts, natterjack toad, sand lizard, smooth snake, bats, dormice, otters)	<p>It is an offence under the Conservation of Habitats and Species Regulations 2017 (Ref 15) to deliberately kill or injure a European protected species, to destroy breeding/ resting sites, or to deliberately disturb these species and affect their ability to survive, rear young, breed or hibernate.</p>
Nationally protected species- those listed in Schedule 5 of the Wildlife and Countryside Act 1981 (as amended) (Allis shad, twaite shad, great crested newt, natterjack toad, bats, dormice, otter)	<p>It is an offence under the Wildlife and Countryside Act 1981 (as amended) (Ref 16) to intentionally or recklessly disturb a species listed on Schedule 5 whilst it is in a place of shelter, or to obstruct access to a place of shelter.</p>
Reptiles	<p>It is an offence under the Wildlife and Countryside Act 1981 (as amended) (Ref 16) to kill or injure common species of reptiles.</p>

Ecological constraint	Rationale
Nationally protected bird species- those listed under Schedule 1 of the Wildlife and Countryside Act 1981 (as amended) (barn owl, peregrine falcon, red kite, kingfisher, firecrest etc.)	All nesting birds are protected whilst nesting as identified below. However, for those listed under Schedule 1 of the Wildlife and Countryside Act 1981 (as amended) (Ref 16) it is also an offence to intentionally or recklessly disturb these birds at, on or near an active nest.
Nesting birds	It is an offence under the Wildlife and Countryside Act 1981 (as amended) (Ref 16) to damage or destroy a bird's nest whilst it is in use, and to kill or injure a bird or destroy an egg.
Badgers	It is an offence under the Protection of Badgers Act (1992) (Ref 17) to damage or destroy a badger sett; obstruct any entrance of a badger sett; and disturb a badger whilst it is occupying a badger sett.
Crawley Borough Council (2015). Crawley Borough Local Plan 2015-2030: Policy ENV2: Biodiversity	<p>All development proposals will be expected to incorporate features to encourage biodiversity where appropriate, and where possible enhance existing features of nature conservation value within and around the development.</p> <p>To ensure a net gain in biodiversity, the following areas will be conserved and enhanced where possible and the council will support their designation and management:</p> <p><u>Nationally designated sites:</u></p> <ul style="list-style-type: none"> • Sites of Special Scientific Interest (SSSI) <p>SSSI will receive the highest level of protection for habitat conservation value in line with national legislation, policy and guidance.</p> <p><u>National Planning Policy Framework Sites</u></p> <ul style="list-style-type: none"> • Ancient Woodland, and aged or veteran trees <p>Planning permission will not be granted for development that results in the loss or deterioration of ancient woodland and aged or veteran trees unless the need for, and benefits of, the development in that location clearly outweigh the loss. A buffer zone between development and ancient woodland will be required in line with Natural England Standing Advice.</p> <p><u>Locally designated sites, and habitats and species outside designated sites:</u></p> <ul style="list-style-type: none"> • Local Nature Reserves • Sites of Nature Conservation Importance • Nature Improvement Areas • Habitats of Principle Importance identified in S41 of the Natural Environment and Rural Communities Act 2006 or Biodiversity Action Plans • Biodiversity Opportunity Areas • Where Protected Species are present

Ecological constraint	Rationale
<p>Horsham District Council (2015) Horsham District Planning Framework: Policy 31 - Green Infrastructure and Biodiversity</p>	<ul style="list-style-type: none"> Where Species of Principal Importance are present, as identified in S41 of the Natural Environment and Rural Communities Act 2006 (Ref 9). <ol style="list-style-type: none"> Development will be supported where it can demonstrate that it maintains or enhances the existing network of green infrastructure. Proposals that would result in the loss of existing green infrastructure will be resisted unless it can be demonstrated that new opportunities will be provided that mitigates or compensates for this loss, and ensures that the ecosystem services of the area are retained. Development proposals will be required to contribute to the enhancement of existing biodiversity, and should create and manage new habitats where appropriate. The Council will support new development which retains and /or enhances significant features of nature conservation on development sites. The Council will also support development which makes a positive contribution to biodiversity through the creation of green spaces, and linkages between habitats to create local and regional ecological networks. Where felling of protected trees is necessary, replacement planting with a suitable species will be required. <ol style="list-style-type: none"> Particular consideration will be given to the hierarchy of sites and habitats in the district as follows: <ol style="list-style-type: none"> Special Protection Area (SPA) and Special Areas of Conservation (SAC) Sites of Special Scientific Interest (SSSIs) and National Nature Reserves (NNRs) Sites of Nature Conservation Importance (SNCIs), Local Nature Reserves (LNRs) and any areas of Ancient woodland, local geodiversity or other irreplaceable habitats not already identified in i & ii above. Where development is anticipated to have a direct or indirect adverse impact on sites or features for biodiversity, development will be refused unless it can be demonstrated that: <ol style="list-style-type: none"> The reason for the development clearly outweighs the need to protect the value of the site; and, That appropriate mitigation and compensation measures are provided. Any development with the potential to impact Arun Valley SPA or the Mens SAC will be subject to a HRA to determine the need for an Appropriate Assessment. In addition, development will be required to be in accordance with the necessary mitigation measures for development set out in the HRA of this plan (Ref 10).

APPENDIX B: Local Record Centre Data

Table 3: Record Centre Data

Scientific Name	Common Name	Status
Plants		
<i>Osmunda regalis</i>	Royal Fern	Sussex Rare
<i>Agrostemma githago</i>	Corncockle	Sussex Rare
<i>Anthemis cotula</i>	Stinking Chamomile	RedList GB post 2001 VU, RedList ENG post 2001 VU
<i>Briza media</i>	Quaking-grass	RedList ENG post 2001 NT
<i>Buxus sempervirens</i>	Box	RedList GB post 2001 DD, RedList ENG post 2001 DD, Nat Rare, Sussex Rare
<i>Calluna vulgaris</i>	Heather	RedList ENG post 2001 NT
<i>Carex echinata</i>	Star Sedge	RedList ENG post 2001 NT
<i>Carex vesicaria</i>	Bladder-sedge	RedList ENG post 2001 VU
<i>Cruciata laevipes</i>	Crosswort	RedList ENG post 2001 NT
<i>Erica tetralix</i>	Cross-leaved Heath	RedList ENG post 2001 NT
<i>Erysimum cheiranthoides</i>	Treacle-mustard	RedList ENG post 2001 NT
<i>Euphorbia platyphyllos</i>	Broad-leaved Spurge	Sussex Rare
<i>Euphrasia nemorosa</i>	Eyebright	RedList ENG post 2001 NT
<i>Filago vulgaris</i>	Common Cudweed	RedList GB post 2001 NT, RedList ENG post 2001 NT
<i>Fragaria vesca</i>	Wild Strawberry	RedList ENG post 2001 NT
<i>Hyacinthoides non-scripta</i>	Bluebell	WCA Sch8
<i>Knautia arvensis</i>	Field Scabious	RedList ENG post 2001 NT
<i>Lathyrus linifolius</i>	Bitter-vetch	RedList ENG post 2001 NT
<i>Lepidium campestre</i>	Field Pepperwort	RedList ENG post 2001 NT
<i>Meconopsis cambrica</i>	Welsh Poppy	Nat Scarce, Sussex Rare
<i>Melampyrum pratense</i>	Common Cow-wheat	RedList ENG post 2001 NT
<i>Mentha arvensis</i>	Corn Mint	RedList ENG post 2001 NT
<i>Oxalis acetosella</i>	Wood-sorrel	RedList ENG post 2001 NT
<i>Potentilla erecta</i>	Tormentil	RedList ENG post 2001 NT
<i>Ranunculus flammula</i>	Lesser Spearwort	RedList ENG post 2001 VU

Scientific Name	Common Name	Status
<i>Sanicula europaea</i>	Sanicle	RedList ENG post 2001 NT
<i>Silene flos-cuculi</i>	Ragged-Robin	RedList ENG post 2001 NT
<i>Stachys arvensis</i>	Field Woundwort	RedList GB post 2001 NT, RedList ENG post 2001 NT
<i>Stachys germanica</i>	Downy Woundwort	WCA Sch8, RedList GB post 2001 VU, RedList ENG post 2001 EN, Nat Rare
<i>Succisa pratensis</i>	Devil's-bit Scabious	RedList ENG post 2001 NT
<i>Tilia platyphyllos</i>	Large-leaved Lime	Nat Scarce, Sussex Rare
<i>Veronica officinalis</i>	Heath Speedwell	RedList ENG post 2001 NT
<i>Orthotrichum cupulatum</i>	Hooded Bristle-moss	Sussex Rare
<i>Allium triquetrum</i>	Three-cornered Garlic	WCA Sch 9 INNS
<i>Centranthus ruber</i>	Red valerian	Sussex INNS
<i>Cotoneaster</i>	A Flowering Plant	WCA Sch 9 INNS
<i>Cotoneaster franchetii</i>	Franchet's Cotoneaster	WCA Sch 9 INNS
<i>Cotoneaster frigidus x salicifolius</i> = <i>C. x watereri</i>	Waterer's Cotoneaster	WCA Sch 9 INNS
<i>Cotoneaster horizontalis</i>	Wall Cotoneaster	WCA Sch 9 INNS
<i>Cotoneaster simonsii</i>	Himalayan cotoneaster	WCA Sch 9 INNS
<i>Crassula helmsii</i>	New Zealand Pigmyweed	WCA Sch 9 INNS
<i>Crocsmia pottsii x aurea</i> = <i>C. x crocosmiiflora</i>	Montbretia	WCA Sch 9 INNS
<i>Elodea nuttallii</i>	Nuttall's Waterweed	WCA Sch 9 INNS
<i>Fallopia japonica</i>	Japanese Knotweed	WCA Sch 9 INNS
<i>Heracleum mantegazzianum</i>	Giant Hogweed	WCA Sch 9 INNS
<i>Hyacinthoides non-scripta x hispanica</i> = <i>H. x massartiana</i>	Hybrid bluebell	Sussex INNS
<i>Impatiens glandulifera</i>	Indian Balsam	WCA Sch 9 INNS
<i>Lamiastrum galeobdolon subsp. argentatum</i>	Yellow Archangel	WCA Sch 9 INNS
<i>Lemna minuta</i>	Least Duckweed	Sussex INNS
<i>Lysichiton americanus</i>	American Skunk-cabbage	Sussex INNS
<i>Petasites fragrans</i>	Winter Heliotrope	Sussex INNS

Scientific Name	Common Name	Status
<i>Prunus laurocerasus</i>	Cherry Laurel	Sussex INNS
<i>Quercus ilex</i>	Evergreen Oak	Sussex INNS
<i>Rhododendron ponticum</i>	A Flowering Plant	WCA Sch 9 INNS
<i>Robinia pseudoacacia</i>	False-acacia	WCA Sch 9 INNS
<i>Rosa rugosa</i>	Japanese Rose	WCA Sch 9 INNS
<i>Campylopus introflexus</i>	Heath Star Moss	Sussex INNS
Fungi		
<i>Mitula paludosa</i>	Bog Beacon	Sussex Rare
Invertebrates		
<i>Agabus</i>	A Beetle	Sussex Rare
<i>Agabus (Gaurodytes) bipustulatus</i>	A Beetle	Sussex Rare
<i>Donacia crassipes</i>	Water-Lily Reed Beetle	Nat Scarce, Notable B, Sussex Rare
<i>Helochares lividus</i>	A Beetle	Sussex Rare
<i>Peltodytes caesus</i>	A Beetle	Nat Scarce
<i>Rhantus (Rhantus) frontalis</i>	A Beetle	Nat Scarce, Notable B, Sussex Rare
<i>Staphylinus dimidiaticornis</i>	A Beetle	Sussex Rare
<i>Apatura iris</i>	Purple Emperor	WCA Sch5 s9.5a, RedList GB post 2001 NT, Sussex Rare
<i>Coenonympha pamphilus</i>	Small Heath	NERC S41, UK BAP Priority, RedList GB post 2001 NT
<i>Coenonympha pamphilus pamphilus</i>	Small Heath	NERC S41, UK BAP Priority, RedList GB post 2001 NT
<i>Cupido minimus</i>	Small Blue	WCA Sch5 s9.5a, NERC S41, UK BAP Priority, RedList GB post 2001 NT
<i>Erynnis tages</i>	Dingy Skipper	NERC S41, UK BAP Priority, RedList GB post 2001 VU
<i>Limenitis camilla</i>	White Admiral	NERC S41, UK BAP Priority, RedList GB post 2001 VU
<i>Polyommatus coridon</i>	Chalk Hill Blue	WCA Sch5 s9.5a RedList GB post 2001 NT
<i>Pyrgus malvae</i>	Grizzled Skipper	NERC S41, UK BAP Priority, RedList GB post 2001 VU
<i>Thecla betulae</i>	Brown Hairstreak	WCA Sch5 s9.5a, NERC S41, UK BAP Priority, RedList GB post 2001 VU, Sussex Rare

Scientific Name	Common Name	Status
<i>Cordulia aenea</i>	Downy Emerald	Sussex Rare
<i>Somatochlora metallica</i>	Brilliant Emerald	RedList GB post 2001 VU, Sussex Rare
<i>Conocephalus fuscus</i>	Long-winged Cone-head	Sussex Rare
<i>Metrioptera roeselii</i>	Roesel's Bush-cricket	Sussex Rare
<i>Acronicta rumicis</i>	Knot Grass	NERC S41, UK BAP Priority
<i>Allophytes oxyacanthae</i>	Green-brindled Crescent	NERC S41, UK BAP Priority
<i>Diarsia rubi</i>	Small Square-spot	NERC S41, UK BAP Priority
<i>Eilema sororcula</i>	Orange Footman	Sussex Rare
<i>Hoplodrina blanda</i>	Rustic	NERC S41, UK BAP Priority
<i>Lycia hirtaria</i>	Brindled Beauty	NERC S41, UK BAP Priority
<i>Malacosoma neustria</i>	Lackey	NERC S41, UK BAP Priority
<i>Spilosoma lutea</i>	Buff Ermine	NERC S41, UK BAP Priority
<i>Tyria jacobaeae</i>	Cinnabar	NERC S41, UK BAP Priority
<i>Aquarius paludum</i>	A True Bug	Nat Scarce, Notable B, Sussex Rare
<i>Harmonia axyridis</i>	Harlequin Ladybird	Sussex INNS
<i>Harmonia axyridis form spectabilis</i>	A Beetle	Sussex INNS
<i>Harmonia axyridis form succinea</i>	A Beetle	Sussex INNS
<i>Pacifastacus leniusculus</i>	Signal crayfish	WCA Sch 9 INNS
Amphibians		
<i>Bufo bufo</i>	Common Toad	WCA Sch5 s9.5a, NERC S41, UK BAP Priority
<i>Lissotriton helveticus</i>	Palmate Newt	WCA Sch5 s9.5a
<i>Lissotriton vulgaris</i>	Smooth Newt	WCA Sch5 s9.5a
<i>Rana temporaria</i>	Common Frog	WCA Sch5 s9.5a
<i>Triturus cristatus</i>	Great Crested Newt	Hab Dir A2 NP, Hab Dir A4, Hab Reg Sch2, WCA Sch5 s9.4b/s9.4c/s9.5a, NERC S41, UK BAP Priority
Reptiles		
<i>Anguis fragilis</i>	Slow-worm	WCA Sch5 s9.1/s9.1 kill/s9.5a, NERC S41, UK BAP Priority
<i>Natrix Helvetica</i>	Grass Snake	WCA Sch5 s9.1/s9.1 kill/s9.5a, NERC S41, UK BAP Priority

Scientific Name	Common Name	Status
<i>Vipera berus</i>	Adder	WCA Sch5 s9.1/s9.1 kill/s9.5a, NERC S41, UK BAP Priority
Birds		
<i>Cygnus olor</i>	Mute Swan	Bird Amber, Notable Bird
<i>Anas platyrhynchos</i>	Mallard	Bird Amber, Notable Bird
<i>Aythya fuligula</i>	Tufted Duck	Notable Bird
<i>Tachybaptus ruficollis</i>	Little Grebe	Notable Bird
<i>Milvus milvus</i>	Red Kite	Birds Dir A1 WCA Sch1 Pt1 RedList Global post 2001 NT, Notable Bird
<i>Pandion haliaetus</i>	Osprey	Birds Dir A1 WCA Sch1 Pt1 Bird Amber, Notable Bird
<i>Falco tinnunculus</i>	Kestrel	Bird Amber, Notable Bird
<i>Falco subbuteo</i>	Hobby	WCA Sch1 Pt1 Notable Bird
<i>Charadrius dubius</i>	Little Ringed Plover	WCA Sch1 Pt1 Notable Bird
<i>Vanellus vanellus</i>	Lapwing	NERC S41, UK BAP Priority, Bird Red, Notable Bird
<i>Actitis hypoleucos</i>	Common Sandpiper	Bird Amber, Notable Bird
<i>Gallinago gallinago</i>	Snipe	Bird Amber, Notable Bird
<i>Larus fuscus</i>	Lesser Black-backed Gull	Bird Amber, Notable Bird
<i>Larus argentatus</i>	Herring Gull	NERC S41, UK BAP Priority, Bird Red, Notable Bird
<i>Columba oenas</i>	Stock Dove	Bird Amber, Notable Bird
<i>Cuculus canorus</i>	Cuckoo	NERC S41, UK BAP Priority, Bird Red, Notable Bird
<i>Tyto alba</i>	Barn Owl	WCA Sch1 Pt1 Notable Bird
<i>Strix aluco</i>	Tawny Owl	Bird Amber, Notable Bird
<i>Caprimulgus europaeus</i>	Nightjar	Birds Dir A1 NERC S41, UK BAP Priority, Bird Amber, Notable Bird
<i>Apus apus</i>	Swift	Bird Amber, Notable Bird
<i>Alcedo atthis</i>	Kingfisher	Birds Dir A1 WCA Sch1 Pt1 Bird Amber, Notable Bird
<i>Picus viridis</i>	Green Woodpecker	Notable Bird
<i>Dendrocopos minor</i>	Lesser Spotted Woodpecker	NERC S41, UK BAP Priority, Bird Red, Notable Bird

Scientific Name	Common Name	Status
<i>Phylloscopus sibilatrix</i>	Wood Warbler	NERC S41, UK BAP Priority, Bird Red, Notable Bird
<i>Phylloscopus trochilus</i>	Willow Warbler	Bird Amber, Notable Bird
<i>Alauda arvensis</i>	Skylark	NERC S41, UK BAP Priority, Bird Red, Notable Bird
<i>Hirundo rustica</i>	Swallow	Notable Bird
<i>Delichon urbicum</i>	House Martin	Bird Amber, Notable Bird
<i>Anthus pratensis</i>	Meadow Pipit	Bird Amber, Notable Bird
<i>Motacilla cinerea</i>	Grey Wagtail	Bird Red, Notable Bird
<i>Prunella modularis</i>	Dunnock	NERC S41, UK BAP Priority, Bird Amber, Notable Bird
<i>Luscinia megarhynchos</i>	Nightingale	Bird Red, Notable Bird
<i>Phoenicurus ochruros</i>	Black Redstart	WCA Sch1 Pt1 Bird Red, Notable Bird
<i>Phoenicurus phoenicurus</i>	Redstart	Bird Amber, Notable Bird
<i>Oenanthe oenanthe</i>	Wheatear	Notable Bird
<i>Turdus philomelos</i>	Song Thrush	NERC S41, UK BAP Priority, Bird Red, Notable Bird
<i>Turdus viscivorus</i>	Mistle Thrush	Bird Red, Notable Bird
<i>Muscicapa striata</i>	Spotted Flycatcher	NERC S41, UK BAP Priority, Bird Red, Notable Bird
<i>Sylvia communis</i>	Whitethroat	Notable Bird
<i>Sylvia undata</i>	Dartford Warbler	Birds Dir A1 WCA Sch1 Pt1 RedList Global post 2001 NT, Bird Amber, Notable Bird
<i>Regulus ignicapilla</i>	Firecrest	WCA Sch1 Pt1 Notable Bird
<i>Poecile palustris</i>	Marsh Tit	NERC S41, UK BAP Priority, Bird Red, Notable Bird
<i>Sturnus vulgaris</i>	Starling	NERC S41, UK BAP Priority, Bird Red, Notable Bird
<i>Passer domesticus</i>	House Sparrow	NERC S41, UK BAP Priority, Bird Red, Notable Bird
<i>Acanthis cabaret</i>	Lesser Redpoll	NERC S41, UK BAP Priority, Bird Red, Notable Bird
<i>Linaria cannabina</i>	Linnet	NERC S41, UK BAP Priority, Bird Red, Notable Bird
<i>Loxia curvirostra</i>	Common Crossbill	WCA Sch1 Pt1 Notable Bird

Scientific Name	Common Name	Status
<i>Pyrrhula pyrrhula</i>	Bullfinch	NERC S41, UK BAP Priority, Bird Amber, Notable Bird
<i>Coccothraustes coccothraustes</i>	Hawfinch	NERC S41, UK BAP Priority, Bird Red, Notable Bird
<i>Emberiza citrinella</i>	Yellowhammer	NERC S41, UK BAP Priority, Bird Red, Notable Bird
<i>Emberiza schoeniclus</i>	Reed Bunting	NERC S41, UK BAP Priority, Bird Amber, Notable Bird
<i>Emberiza calandra</i>	Corn Bunting	NERC S41, UK BAP Priority, Bird Red, Notable Bird
<i>Aix galericulata</i>	Mandarin Duck	WCA Sch 9 INNS
<i>Alopochen aegyptiacus</i>	Egyptian Goose	WCA Sch 9 INNS
<i>Branta canadensis</i>	Canada Goose	WCA Sch 9 INNS
<i>Psittacula krameri</i>	Ring-necked Parakeet	WCA Sch 9 INNS
Mammals		
	Bat species	Hab Dir A2 NP, Hab Dir A4 Hab Reg Sch2, WCA Sch5 s9.4b/s9.4c/s9.5a, NERC S41, UK BAP Priority, RedList Global post 2001 NT
<i>Eptesicus serotinus</i>	Serotine	Hab Dir A4 Hab Reg Sch2, WCA Sch5 s9.4b/s9.4c/s9.5a
<i>Myotis sp.</i>	Myotis bat	Hab Dir A2 NP, Hab Dir A4 Hab Reg Sch2, WCA Sch5 s9.4b/s9.4c/s9.5a, NERC S41, UK BAP Priority, RedList Global post 2001 NT
<i>Myotis bechsteinii</i>	Bechstein's bat	Hab Dir A2 NP, Hab Dir A4 Hab Reg Sch2, WCA Sch5 s9.4b/s9.4c/s9.5a, NERC S41, UK BAP Priority, RedList Global post 2001 NT
<i>Myotis brandti</i>	Brandt's bat	Hab Dir A4 Hab Reg Sch2, WCA Sch5 s9.4b/s9.4c/s9.5a
<i>Myotis daubentonii</i>	Daubenton's bat	Hab Dir A4 Hab Reg Sch2, WCA Sch5 s9.4b/s9.4c/s9.5a
<i>Myotis mystacinus</i>	Whiskered bat	Hab Dir A4 Hab Reg Sch2, WCA Sch5 s9.4b/s9.4c/s9.5a
	Whiskered/ Brandt's bat	Hab Dir A4 Hab Reg Sch2, WCA Sch5 Sec9.4b, WCA Sch5 Sec9.4c, WCA Sch5 Sec9.5a
<i>Myotis nattereri</i>	Natterer's bat	Hab Dir A4 Hab Reg Sch2, WCA Sch5 s9.4b/s9.4c/s9.5a

Scientific Name	Common Name	Status
<i>Nyctalus leisleri</i>	Lesser noctule	Hab Dir A4 Hab Reg Sch2, WCA Sch5 s9.4b/s9.4c/s9.5a
<i>Nyctalus noctula</i>	Noctule	Hab Dir A4 Hab Reg Sch2, WCA Sch5 s9.4b/s9.4c/s9.5a, NERC S41, UK BAP Priority
<i>Pipistrellus sp.</i>	Pipistrelle sp.	Hab Dir A4 Hab Reg Sch2, WCA Sch5 s9.4b/s9.4c/s9.5a, NERC S41, UK BAP Priority
<i>Pipistrellus nathusii</i>	Nathusius's pipistrelle	Hab Dir A4 Hab Reg Sch2, WCA Sch5 s9.4b/s9.4c/s9.5a
<i>Pipistrellus pipistrellus</i>	Common pipistrelle	Hab Dir A4 Hab Reg Sch2, NERC S41, WCA Sch5 Sec9.4b, WCA Sch5 Sec9.4c, WCA Sch5 Sec9.5a, UK BAP Priority
<i>Pipistrellus pygmaeus</i>	Soprano pipistrelle	Hab Dir A4 Hab Reg Sch2, WCA Sch5 s9.4b/s9.4c/s9.5a, NERC S41, UK BAP Priority
<i>Plecotus sp.</i>	Long eared sp.	Hab Dir A4 Hab Reg Sch2, WCA Sch5 s9.4b/s9.4c/s9.5a, NERC S41, UK BAP Priority
<i>Plecotus auritus</i>	Brown long-eared bat	Hab Dir A4 Hab Reg Sch2, WCA Sch5 s9.4b/s9.4c/s9.5a, NERC S41, UK BAP Priority
<i>Erinaceus europaeus</i>	West European Hedgehog	NERC S41, UK BAP Priority
<i>Micromys minutus</i>	Harvest mouse	NERC S41, UK BAP Priority
<i>Muscardinus avellanarius</i>	Hazel dormouse	Hab Reg Sch2, WCA Sch5 s9.4b/s9.4c/s9.5a, NERC S41, UK BAP Priority
<i>Sciurus vulgaris</i>	Eurasian red squirrel	WCA Sch5 s9.1/s9.1 kill/s9.1 take/s9.4a/s9.4b/s9.4c/s9.5a, NERC S41, UK BAP Priority
<i>Neovison vison</i>	American Mink	WCA Sch 9 INNS
<i>Sciurus carolinensis</i>	Eastern grey squirrel	WCA Sch 9 INNS

APPENDIX C: Phase 1 Target Notes

Table 4: Phase 1 Target Notes

Phase 1 Target Notes	
Number	Description
Target Note 1	Bank good for reptiles.
Target Note 2	Rubble pile, suitable hibernacula.
Target Note 3	Corrugated sheets and wooden panels, suitable reptiles hibernacula.
Target Note 4	Woodpecker hole on pine tree on west side approx. 2.5m – high bat roost potential.
Target Note 5	Mammal path into woodland.
Target Note 6	Good for invertebrates and all reptile species.
Target Note 7	Mammal path leading into woodland.
Target Note 8	Mature oak – bat roost potential.
Target Note 9	Mature oaks - bat roost potential.
Target Note 10	Large mature oak with bat roost potential.
Target Note 11	Log pile- suitable reptile hibernacula.
Target Note 12	Log pile- suitable reptile hibernacula.
Target Note 13	Log pile- suitable reptile hibernacula.
Target Note 14	Log pile- suitable reptile hibernacula.
Target Note 15	Log pile- suitable reptile hibernacula.
Target Note 16	Log pile- suitable reptile hibernacula.
Target Note 17	Badger sett: One entrance with fresh spoil, bedding and hair at entrance, one entrance borderline big enough for badgers, five rabbit burrow entrances, one collapsed entrance.
Target Note 18	Rabbit warren.
Target Note 19	Tree with bat roost potential.
Target Note 20	Tree with bat roost potential.
Target Note 21	Tree with bat roost potential.
Target Note 22	Tree with bat roost potential.
Target Note 23	Wood pile – suitable hibernacula.
Target Note 24	Rhododendron.

Phase 1 Target Notes	
Number	Description
Target Note 25	Pond 6 - large pond approx. 1330m ² , good water quality with limited aquatic vegetation, surrounded by barbed wire, scattered Broadleaved trees scattered and grazed pasture, minor fish presence.
Target Note 26	Barn complex - not surveyed due to access restrictions.
Target Note 27	Concrete bridge over Ifield Brook.
Target Note 28	Tree with bat potential - woodpecker holes.
Target Note 29	Tree with bat roost potential.
Target Note 30	Multiple mature oaks with bat roost potential.
Target Note 31	Dead tree with bat potential.
Target Note 32	Mature Ash with bat potential.
Target Note 33	Dead tree with bat roost potential.
Target Note 34	Tree with bat roost potential- large cavity in main stem.
Target Note 35	Two mature Ash trees with bat roost potential.
Target Note 36	Pond 1 – small pond 8m x 15m, approx. area of 120m ² , appears to be permanent with wooded bank to one side and surrounded by amenity grassland. Diverse aquatic vegetation with good water quality.
Target Note 37	Mature Ivy-covered oak with bat roost potential.
Target Note 38	Mature oak trees with bat roost potential.
Target Note 39	Alder with woodpecker holes.
Target Note 40	Mature Ash with multiple bat features for bat roost potential.
Target Note 41	Brash pile.
Target Note 42	Multiple mature oaks along woodland with potential bat roost features.
Target Note 43	Slow-worm.
Target Note 44	Dead wood pile and brash pile. Suitable reptile hibernacula.
Target Note 45	Dead wood pile and brash pile. Suitable reptile hibernacula.
Target Note 46	Culvert on eastern side of Ifield Brook comprised of a concrete pipe with red brick head wall. Approx 1m in diameter. Horizontal grille on entrance and enough room between the horizontal bars for bats to fly through. However, could not see daylight at other end of culvert.
Target Note 47	Sandy/clay bank with holes and bird dropping - likely nesting site.
Target Note 48	Badger sett, hair found, 4 well used entrances (1 very well worn path with badger hair found), 2 partially used entrances, 4 collapsed entrances.

Phase 1 Target Notes	
Number	Description
Target Note 49	Mature oak with bat roost potential.
Target Note 50	Mature tree, possible Beech, with bat roost potential.
Target Note 51	Three mature oak trees, one standing dead tree, with bat roost potential.
Target Note 52	Mature oak with bat roost potential.
Target Note 53	Grass snake sighting.
Target Note 54	Concrete bridge carrying PROW over top. Easily accessible for bats for night time perching/roosting and passage. along the ditch. Heavily shaded so not considered suitable for roosting by large numbers of bats and no crevices present for daytime roosting.
Target Note 55	Brash and log pile, suitable hibernacula.
Target Note 56	Standing dead oak tree next to mature oaks with bat roost potential.
Target Note 57	Rhododendron.
Target Note 58	Derelict buildings – not surveyed due to access restrictions.
Target Note 59	Ifield Golf Course buildings- a number of buildings comprised a mixture of brick, breezeblock and metal buildings all with features suitable to support roosting bats.
Target Note 60	Ifield Art Centre buildings - a number of buildings comprised of a mixture of brick and wood. All of the buildings had a number of features suitable to support roosting bats.
Target Note 61	Pond 4 – large pond approx. 1580m ² , moderate water quality with diverse aquatic vegetation, major fish presence, wooded banks surrounded by amenity grassland.
Target Note 62	Pond 3b – small pond approx. 15m by 8m, good water quality with diverse range of aquatic vegetation, surrounded by mature willows and amenity grassland, fish present.
Target Note 63	Pond 3 – small pond approx. 10m x 20m, good water quality with diverse range of aquatic vegetation, surrounded by four semi-mature trees and amenity grassland, fish present. New Zealand Pigmyweed recorded in this pond.
Target Note 64	Pond 2 – small shallow pond approx. 10m x 10m, moderate water quality with limited aquatic vegetation, surrounded by amenity grassland. New Zealand Pigmyweed recorded in this pond.
Target Note 65	Pond 5 – medium pond approx. 550m ² , limited aquatic vegetation, poor water quality, wooded banks surrounded by amenity grassland.
Target Note 66	Ditch 2 – small ditch <50m ² , dry sections with wooded banks surrounded by grassland, amphibians observed.
Target Note 67	Ditch 4 – large ditch >330m ² , wooded banks surrounded by rough grassland.
Target Note 68	Ditch 6 – shallow ditch approx. 180m in length, 1m wide, surrounded by scrub banks with grazing pasture to one side, no aquatic vegetation.
Target Note 69	Potential badger sett under mature oak tree, badger hairs found and scratching signs.

Phase 1 Target Notes	
Number	Description
Target Note 70	Mature oak with bat roost potential.
Target Note 71	Oak with bat roost potential.
Target Note 72	Oak with bat roost potential.
Target Note 73	Large mature oak with split limb - potential for bats.
Target Note 74	Large mature oak with knotholes – potential for bats.
Target Note 75	Small concrete bridge, crossing Ifield Brook, within woodland area
Target Note 76	Small concrete crossing over brook.
Target Note 77	Wooden bridge crossing the River Mole.
Target Note 78	Small ornamental pond containing fish
Target Note 79	Group of buildings which house maintenance equipment
Target Note 80	Mature oak -bat potential
Target Note 81	Mature pollarded Ash with pigeon nest, bird box and knot holes
Target Note 82	Area of dense scrub
Target Note 83	Pollarded Ash with bat roost potential – knot holes and broken limb.
Target Note 84	Two Ash trees with bat roost potential – one with multiple woodpecker holes and a bird box and one with fewer features and a bird box
Target Note 85	Mature Field Maple with bat roost potential – ivy covered stem and a bird box.
Target Note 86	Mature oak with bat roost potential – large tear out, broken limbs and ivy clad stem.
Target Note 87	Concrete bridge, crossing Ifield Brook
Target Note 88	Pond, approx 30m long and 30m , contains island at centre with willow and ash, pond contains, yellow flag iris, bulrushes, water mint, water lilies.
Target Note 89	Building with bat potential slip tiles seen from the SINC and dense vegetation covering the roof
Target Note 90	Buildings with bat potential outside of redline boundary
Target Note 91	Freshwater mussel found on eastern bank of Ifield Brook. Species unknown.
Target Note 92	Badger sett on eastern bank of Ifield Brook. Nine entrances, one very well used with badger hair present and well defined pathway between entrances.
Target Note 93	Horticultural yard with a number of barn structures present
Target Note 94	Area of stored waste and aggregate / earth
Target Note 95	Area of piled earth adjacent to a plantation broadleaf woodland

Phase 1 Target Notes	
Number	Description
Target Note 96	Barn
Target Note 97	Semi-improved grassland, no evidence of management
Target Note 98	Hedgerow in the west of the site
Target Note 99	Improved grassland in the west of the site
Target Note 100	Broadleaf woodland plantation in the south of the site
Target Note 101	Derelict building adjacent to unused swimming pool in the west of the site
Target Note 102	Large oak tree, possibly veteran
Target Note 103	Duck pond in the west of the site
Target Note 104	Horse paddocks in the east of the site
Target Note 105	Area with derelict caravans and sheds

APPENDIX D: Photographs

Table 5: Photographs of the Site



Photo 1: Semi-natural broadleaved woodland



Photo 2: Ifield Golf Course plantation woodland



Photo 3: Scrub



Photo 4: Ifield Brook and Meadows LWS scattered trees



Photo 5: Ifield Golf Course scattered trees



Photo 6: Ifield Golf Course scattered trees



Photo 7: Ifield Brook and Meadows LWS neutral semi-improved grassland



Photo 8: Cut neutral semi-improved grassland



Photo 9: Cut species poor semi-improved grassland



Photo 10: Arable field margins species poor semi-improved grassland



Photo 11: Ifield Golf Course species poor semi-improved grasslands



Photo 12: Ruderal vegetation



Photo 13: Pond – TN 36



Photo 14: Pond - TN 64



Photo 15: Pond - TN 63



Photo 16: Pond TN - 62



Photo 17: Pond - TN 61



Photo 18: Pond - TN 65

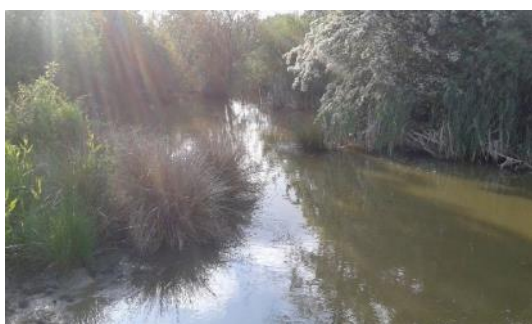


Photo 19: Pond - TN 25



Photo 20: Dry ditch



Photo 21: Ditch - TN 66



Photo 22: Ditch - TN 67



Photo 23: Ditch - TN 68



Photo 24: River Mole



Photo 25: Ifield Brook



Photo 26: Arable field





Photo 27: Ifield Golf Course amenity grassland



Photo 28: Ephemeral vegetation



Photo 29: Ifield Golf Course hedgerow



Photo 30: Ifield Golf Course buildings



Photo 31: Ifield Golf Course buildings



Photo 32: Ifield Golf Course buildings



Photo 33: Ifield Art Centre buildings



Photo 34: Rhododendron at Ifield Golf Course



Photo 35: New Zealand Pigmyweed



Photo 36: Rubble pile



Photo 37: Badger sett



Photo 38: Potential badger sett



Photo 39: Horticultural yard (TN 78)



Photo 40: Area of stored waste and aggregate / earth (TN 79)



Photo 41: Area of piled earth adjacent to a plantation broadleaf woodland (TN 80)



Photo 42: Barn (TN81)



Photo 43: Semi-improved grassland (TN82)



Photo 44: Hedgerow in the west of the site (TN83)



Photo 45: Improved grassland in the west of the site (TN84)



Photo 46: Broadleaf woodland plantation in the south of the site (TN85)



Photo 47: Derelict building adjacent to unused swimming pool in the west of the site (TN86)



Photo 48: Large oak tree (TN87)



Photo 49: Duck pond in the west of the site (TN88)



Photo 50: Horse paddocks in the east of the site (TN89)

APPENDIX E: Key Surveyor Pen Portraits

Table 6: Key Surveyor Pen Portraits

Surveyor	CV details
Brandon Murray MCIEEM (Principal Ecological Consultant) BSc(hons)	Brandon has been a professional ecologist for over nine years and has undertaken multiple Phase 1 habitat surveys and Hedgerow Assessments. Brandon has planned and led surveys for many species including badgers, bats, GCN (Great Crested Newts) water voles and reptiles and is very confident in assessing habitats for their protected species suitability.
Porscha Thompson ACIEEM (Graduate Ecologist) MSc BSc (Hons)	Porscha has experience in assessing sites for potential ecological impacts and is able to provide appropriate recommendations and mitigation in order to reduce potential impacts. Porscha has experience in undertaking a range of protected species surveys including bats, great crested newts (GCN), dormice, reptiles and badger surveys, phase 1 habitat surveys and ecological clerk of works and has a keen interest in botany. She also has strong report writing, desk study and coordination skills. She currently holds a Class 1 Natural England GCN licence, is an accredited agent of a Natural Resources Wales GCN licence and bat licence.
Siân Carr MCIEEM (Senior Ecologist) PhD BSc (Hons)	Siân has over 10 years' experience as an ecological consultant working on both public and private sector projects of various scales. These roles have provided her with a wide range of technical experience, and a thorough understanding of environmental legislation and excellent organisational skills. She has expertise in a range of species surveys, including badgers and produced numerous technical reports, including habitat assessments, species specific reports including mitigation strategies and method statements
Julie Player ACIEEM (Ecologist) BSc (Hons)	Julie has 6 years' experience as an ecological consultant working on both public and private sector projects. Julie has significant experience of undertaking surveys for protected species. These roles have provided her with a wide range of technical experience, has significant experience in undertaking surveys for protected species, a thorough understanding of environmental legislation, Ecological and Environmental Clerk of Works and excellent organisation skills. Julie is experienced in producing technical reports, including habitat assessments, species specific reports including mitigation strategies, method statements and species licenses.

Arcadis (UK) Limited

Arcadis House
34 York Way
London N1 9AB
United Kingdom
T: +44 (0)20 7812 2000

[arcadis.com](https://www.arcadis.com)