

APPEARANCE AND MATERIALS

FENESTRATION/ ORIENTATION

To achieve a coherent visual continuity across the scheme, all openings to the facades of all blocks have been coordinated to achieve visual harmony.

The elevations are expressed with openings, which within their reveal vary according to orientation to maximise passive cooling measures.

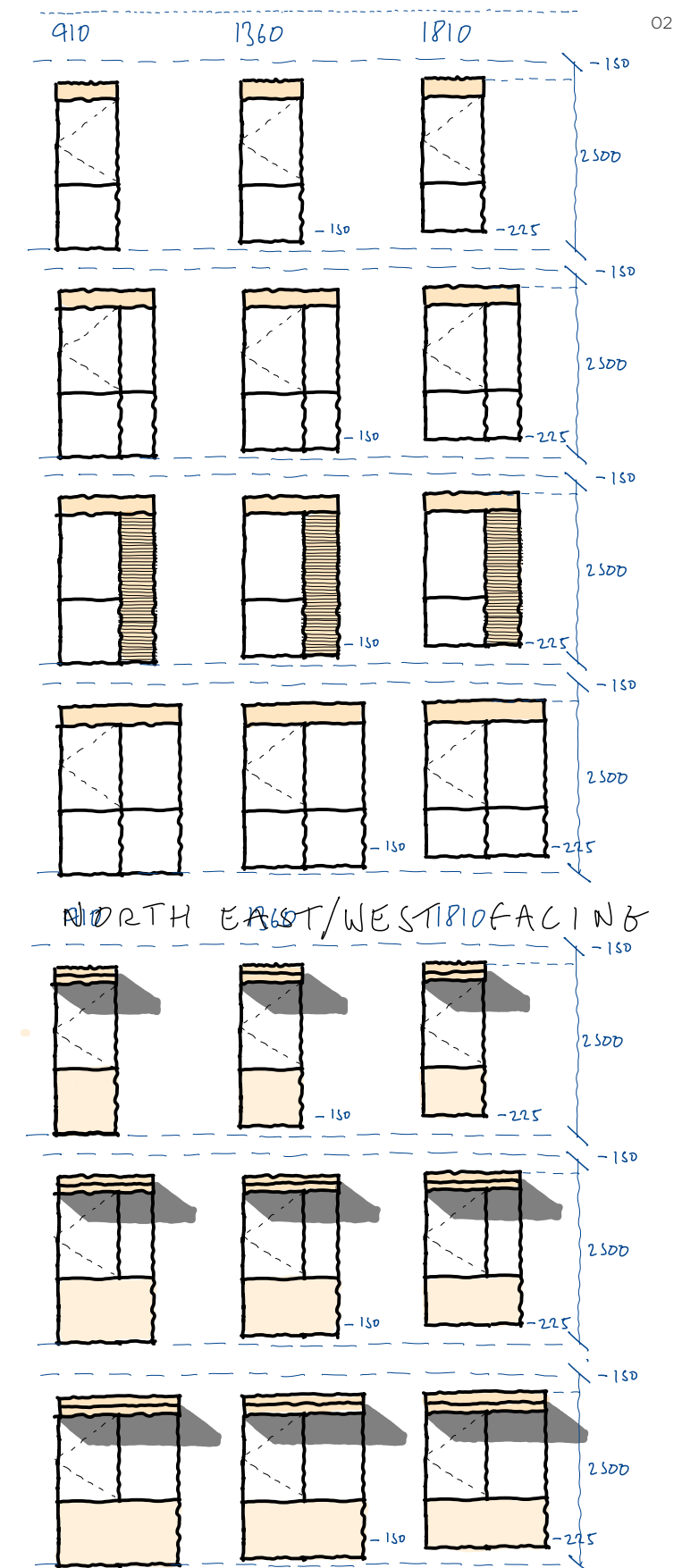
- Any openings on the NE and SE elevation are full height to maximise daylight and internal quality of units.
- Any openings on the NW and SW elevation are reduced in area by a 1100mm high (from finish floor level) solid panel and projecting brise soleil to shield direct sunlight and minimise unwanted overheating.

This is particularly critical as the site requires a degree of symmetry, the fact that alternate types of windows are framed within a consistent opening language allows for a coherency, and ensures the prospect when looking at opposing orientated elevations do not appear cluttered.

The proportions of these openings are derived from both the Richmond Road conservation area and existing heritage building openings.



- 01 Differing but relational elevations that incorporate passive cooling
02 Glazing Consistency



APPEARANCE AND MATERIALS

Incorporating the preceding strategies, the differing architectural conversion and new build reads as a coherent rationalised scheme.

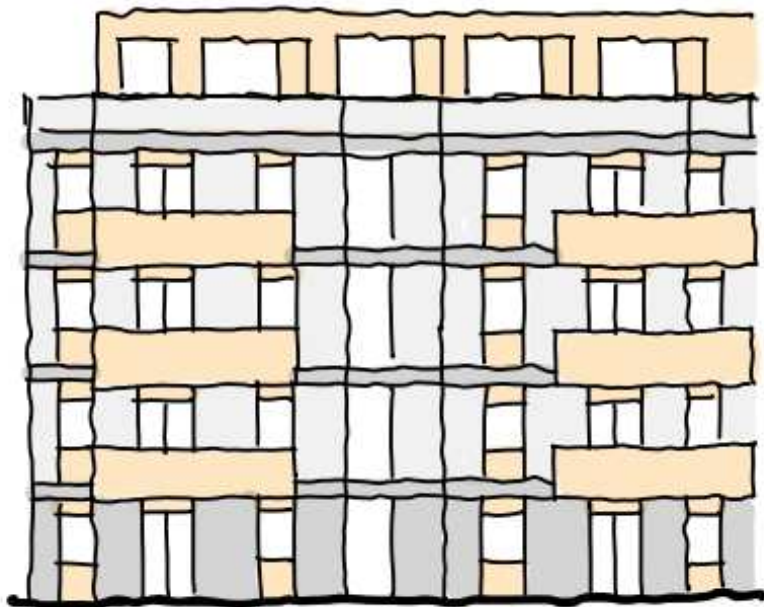
01



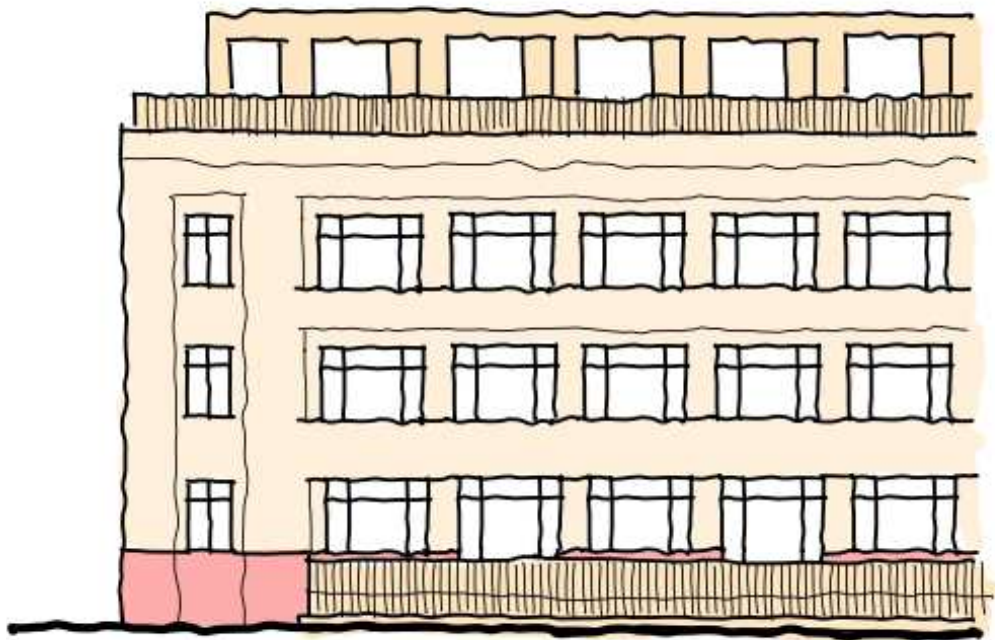
02



03



04



01 Mews Houses
02 Town Houses

03 Apartments
04 Heritage block

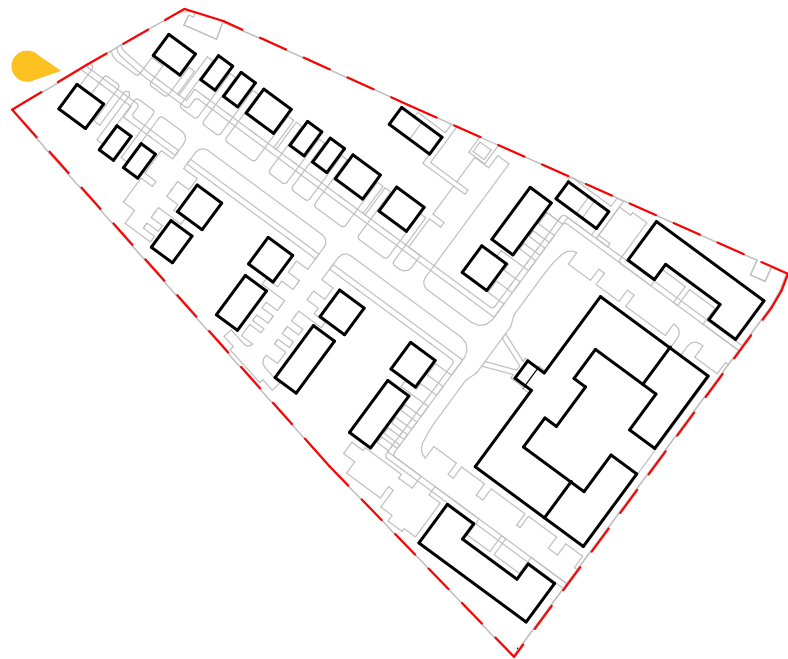
07 ILLUSTRATIVE VISUALS

AYRE
CHAMBERLAIN
GAUNT

AERIAL VIEW



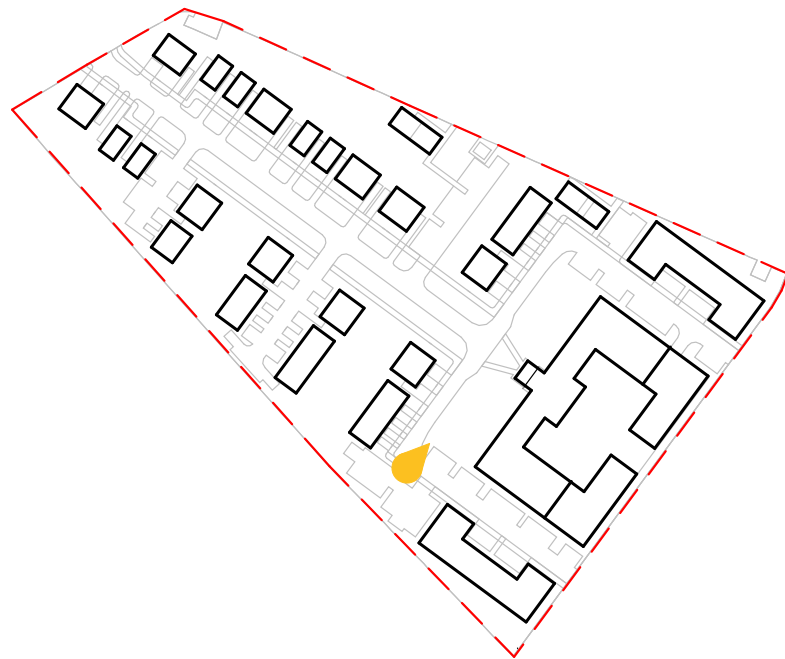
EXTERNAL VIEW



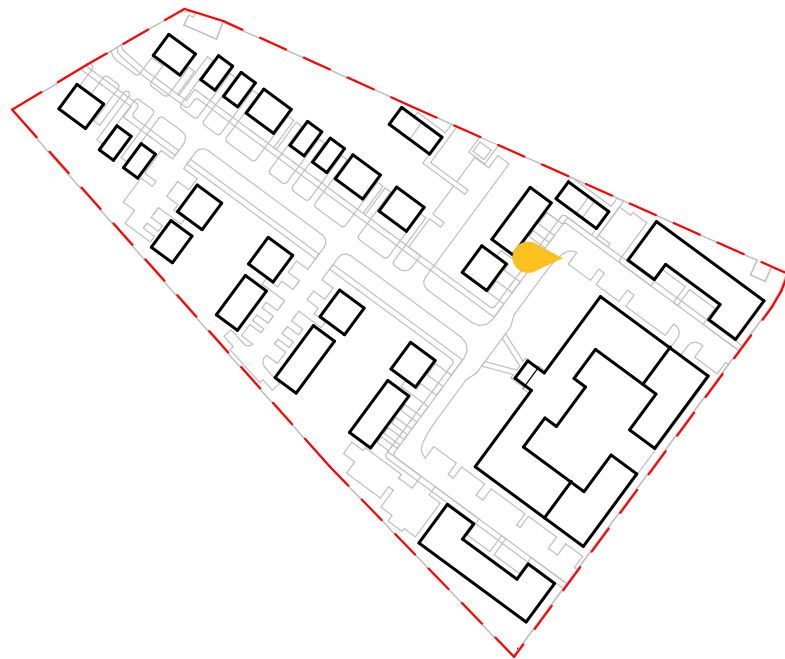
EXTERNAL VIEW



EXTERNAL VIEW



EXTERNAL VIEW





ACGARCHITECTS.CO.UK

Registered Office

Belvedere House, Basing View
Basingstoke
Hampshire
RG21 4HG

+44 (0)20 3909 5750

mail@acgarchitects.co.uk

© Copyright 2024 Ayre Chamberlain Gaunt