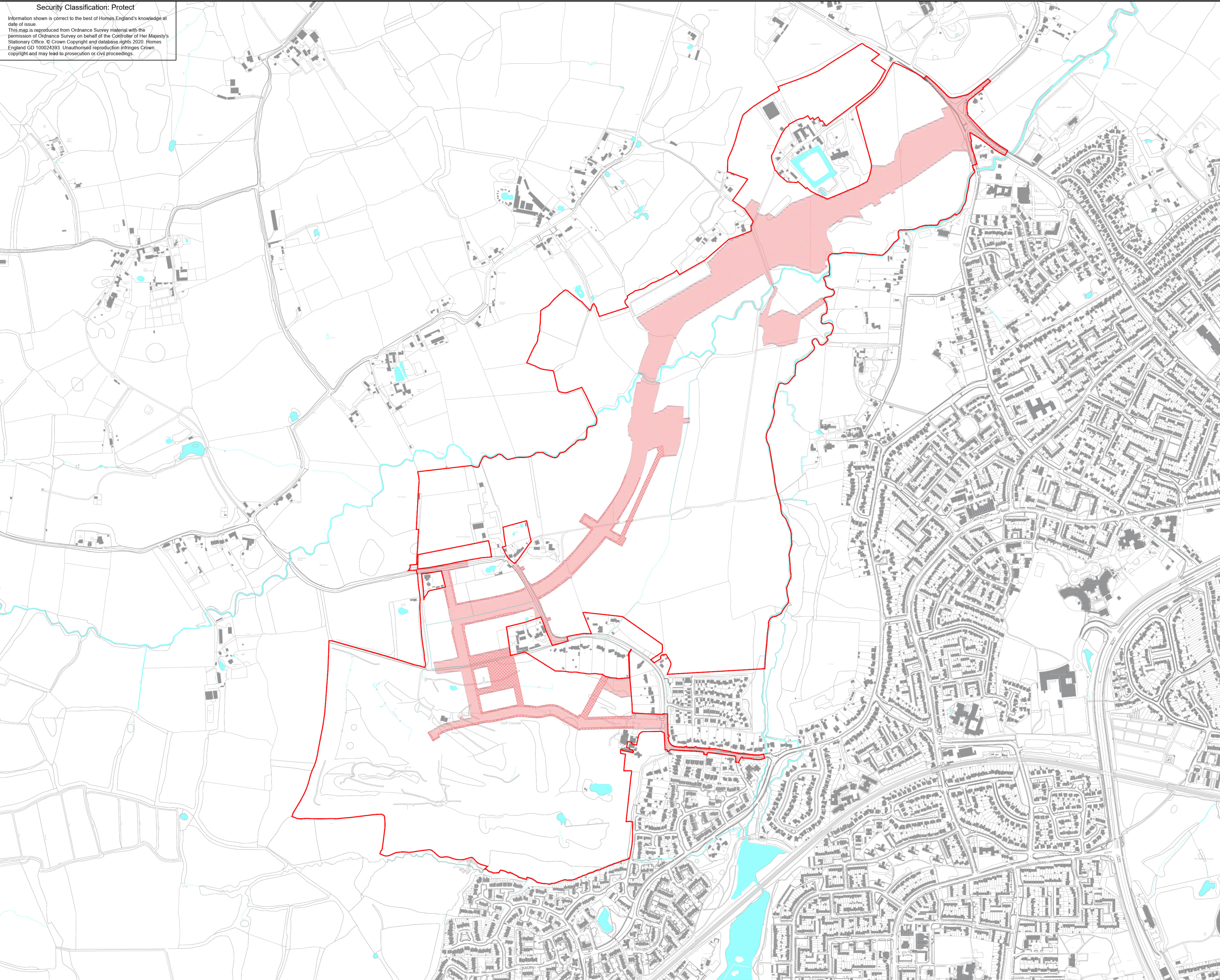


Security Classification: Protect

Information shown is correct to the best of Homes England's knowledge at date of issue.

This map is reproduced from Ordnance Survey material with the permission of Ordnance Survey on behalf of the Controller of Her Majesty's Stationary Office. © Crown Copyright and database rights 2020. Homes England GD 100024393. Unauthorised reproduction infringes Crown copyright and may lead to prosecution or civil proceedings.



Copyright: Prior+Partners (P+P), 2021. All rights reserved. Except as permitted by the Copyright, Design and Patents Act 1988, no part of this document may be reproduced, stored, transmitted or distributed in any form or by any means, whether electronic, mechanical, by photocopy, recording or otherwise, without prior permission of a director. Except where otherwise expressly agreed in writing, P+P shall have no responsibility or liability for any loss (direct, consequential or otherwise) which may arise from the reliance on or use of this document or the information contained in it.

SCALE BAR = NORTH POINT    Do not scale this drawing.

0    50    100    200 m

N

**KEYS**

- Hybrid Application Area
- Area Applied for in Detail
- Areas included within the detailed application but where RMAs will be submitted in the future. An overview of how the items of overlap are physically compatible is provided in the DAS

2	Updated red line boundary	JY	TC	15/01/2025
1	An initial drawing of the red line boundary	JY	TC	07/05/2024
REV	DESCRIPTION	DRAWN	CHKD	DATE

Safety, Health and Environment Information

In addition to the hazards / risks normally associated with the types of work detailed on this drawing, note the following risks and information:

CONSTRUCTION	
DISMANTLING / DEMOLITION (FUTURE)	

For information relating to Use, Cleaning and Maintenance see the Health and Safety File. It is assumed that all works will be carried out by a competent contractor working, where appropriate, to an approved method statement.

CLIENT	MASTERPLAN CONSULTANT
 Homes England 50 Victoria Street, Westminster London SW1H 0TL +44 (0) 200 1234 500	 Prior + Partners 70 Cowcross Street London EC1M 6EJ +44 (0)20 3951 0052

DRAWING TITLE

PLANNING APPLICATION  
BOUNDARY (RED LINE) PLAN

PROJECT TITLE

Land West of Ifield

DRAWN	CHECKED	APPROVED
AA	TC	SM
DATE	SCALE	SIZE
22/05/2025	1:5000	A1
PURPOSE OF DRAWING	SUITABILITY	
For Approval	S1	
DRAWING NUMBER	REV	
WOI-HPA-PLAN-PAB-01	P02	