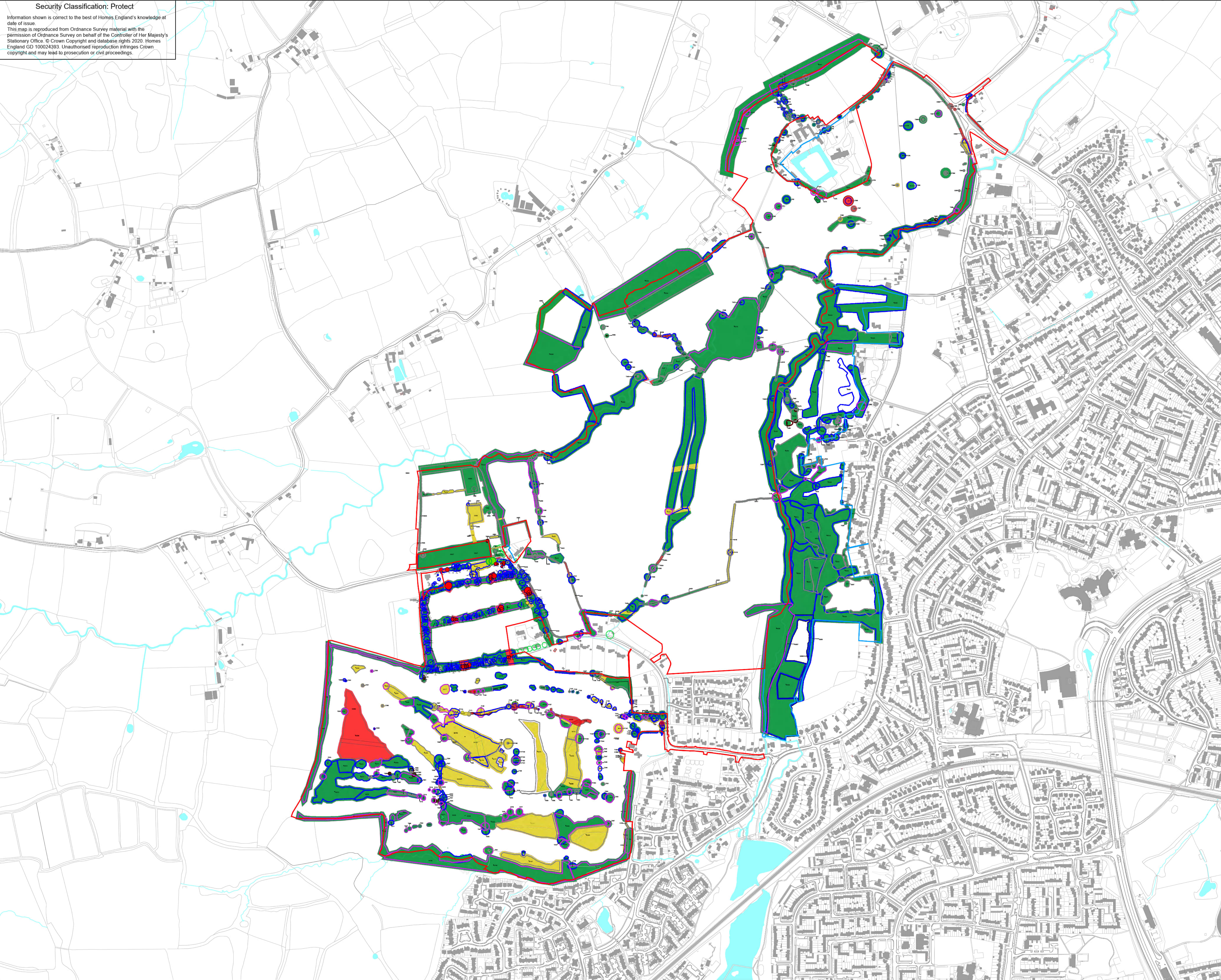


Security Classification: Protect

Information shown is correct to the best of Homes England's knowledge at date of issue.

This map is reproduced from Ordnance Survey material with the permission of Ordnance Survey on behalf of the Controller of Her Majesty's Stationary Office. © Crown Copyright and database rights 2020. Homes England GD 100024393. Unauthorised reproduction infringes Crown copyright and may lead to prosecution or civil proceedings.



Copyright: Prior+Partners (P+P), 2022. All rights reserved.

Except as permitted by the Copyright, Design and Patents Act 1988, no part of this document may be reproduced, stored, transmitted or distributed in any form or by any means, whether electronic, mechanical, by photocopy, recording or otherwise, without prior permission of a director. Except where otherwise expressly agreed in writing, P+P shall have no responsibility or liability for any loss (direct, consequential or otherwise) which may arise from the reliance on or use of this document or the information contained in it.

SCALE BAR - NORTH POINT Do not scale this drawing

0 50 100 200 m

N

KEYS

FOR APPROVAL

Application Site Boundary

FOR CONTEXT

To be removed

To be retained

As many trees retained as possible

TREE CATEGORIES

Purple - Category A

Blue - Category B

Grey - Category C

Red - Category U

09	Issued for information	AI	EB	11.06.2025
08	Issued for information	AI	EB	10.06.2025
07	Issued for information	AI	EB	02.06.2025
06	Issued for information	AI	EB	21.02.2025
05	Issued for information	AI	EB	14.01.2025
04	Issued for information	XW	EB	08.07.2024
03	Issued for information	YE	EB	05.07.2024
02	Issued for information	PK	EB	06.06.2023
01	Issued for information	PK	EB	03.05.2023
00	Issued for information	PK	EB	27.02.2023



REV	DESCRIPTION	DRAWN	CHECKED	DATE

Safety, Health and Environment Information

In addition to the hazards / risks normally associated with the types of work detailed on this drawing, note the following risks and information:

CONSTRUCTION	
DISMANTLING / DEMOLITION (FUTURE)	

For information relating to Use, Cleaning and Maintenance see the Health and Safety File. It is assumed that all works will be carried out by a competent contractor working, where appropriate, to an approved method statement.

CLIENT	LANDSCAPE CONSULTANT
 <p>Homes England</p> <p>Homes England 50 Victoria Street, Westminster London SW1H 0TL +44 (0) 300 1234 500</p>	 <p>GILLESPIES</p> <p>Gillespies LLP 1 St John's Square London EC1M 4DH 020 7255 2929</p>

DRAWING TITLE

PARAMETER PLAN 6
PLANNING APPLICATION
TREE REMOVAL PLAN

PROJECT TITLE

Land West of Ifield

DRAWN	CHECKED	APPROVED	SB
PK	ED		

DATE	SCALE	SIZE	A1
27/02/2023	1:5000		

PURPOSE OF DRAWING	SUITABILITY
For Information	S1

DRAWING NUMBER	REV
WOI-APP-PP06	09