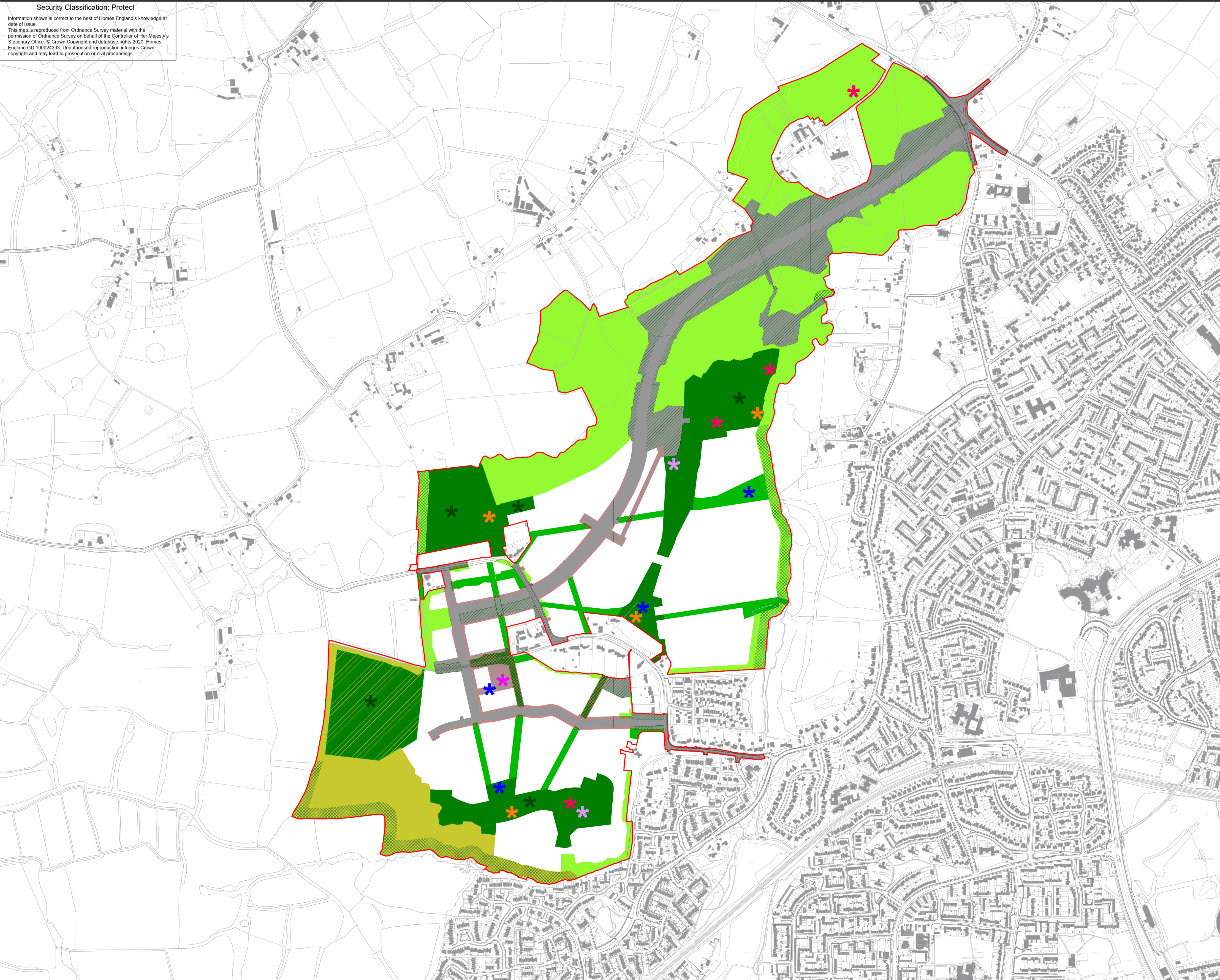


Security Classification: Protect

Information shown is correct to the best of Homes England's knowledge at date of issue.

This map is reproduced from Ordnance Survey material with the permission of Ordnance Survey on behalf of the Controller of Her Majesty's Stationary Office. © Crown Copyright and database rights 2020. Homes England GD 100024393. Unauthorised reproduction infringes Crown copyright and may lead to prosecution or civil proceedings.



Copyright: Prior+Partners (P+P), 2022. All rights reserved. Except as permitted by the Copyright, Design and Patents Act 1988, no part of this document may be reproduced, stored, transmitted or distributed in any form or by any means, whether electronic, mechanical, by photocopy, recording or otherwise, without prior permission of a director. Except where otherwise expressly agreed in writing, P+P shall have no responsibility or liability for any loss (direct, consequential or otherwise) which may arise from the reliance on or use of this document or the information contained in it.

SCALE BAR = NORTH POINT Do not scale this drawing.

0 50 100 200 m

KEYS

- Hybrid Application Area
- Area Applied for in Detail
- Areas included within the detailed application but where RMAs will be submitted in the future. An overview of how the items of overlap are physically compatible is provided in the DAS
- Principal Building Zone
- Landscape delivered under the detailed element

FOR APPROVAL

Strategic Green Infrastructure

- Natural and Semi-natural Green Space
- Ecological Buffer
- Connective Green Infrastructure
- Parks and Gardens
- Parks and Gardens Provided in Secondary School
- Area Managed for Nature Conservation Purposes

Locations are shown indicatively

Additional Green Infrastructure (to be delivered in areas of strategic green infrastructure and on plot as appropriate)

- Allotment
- NEAP
- LEAP
- Youth Areas and Facilities
- Sport Pitches, Tennis & Multi Courts
- Public Squares

Please refer to the Green Infrastructure (GI) provisions for minimum requirements and areas to be delivered at West of Ifield.

Whilst the majority of buildings will be limited to the principal building zone, ancillary buildings required to serve the areas of landscape and the scheme, such as utility buildings as part of the water neutrality strategy or sports pavilions to service the sports pitches, will be allowable within the areas of landscape and identified at the RMA stage.

REV	DESCRIPTION	DRAWN	CHKD	DATE
-	-	-	-	-

Safety, Health and Environment Information

In addition to the hazards / risks normally associated with the types of work detailed on this drawing, note the following risks and information:

CONSTRUCTION	
DISMANTLING / DEMOLITION (FUTURE)	

For information relating to Use, Cleaning and Maintenance see the Health and Safety File. It is assumed that all works will be carried out by a competent contractor working, where appropriate, to an approved method statement.

CLIENT	MASTERPLAN CONSULTANT
 Homes England 50 Victoria Street, Westminster London SW1H 0TL +44 (0) 200 1234 500	 Prior + Partners 70 Cowcross Street London EC1M 6EJ +44 (0)20 3951 0052

DRAWING TITLE

PARAMETER PLAN 1
LANDSCAPE AND PUBLIC REALM

PROJECT TITLE

Land West of Ifield

DRAWN	CHECKED	APPROVED
AA	TC	SM

DATE	SCALE	SIZE
22/05/2025	1:5000	A1

PURPOSE OF DRAWING	SUITABILITY
For Approval	S1

DRAWING NUMBER	REV
WOI-HPA-PLAN-PP01-01	P02