

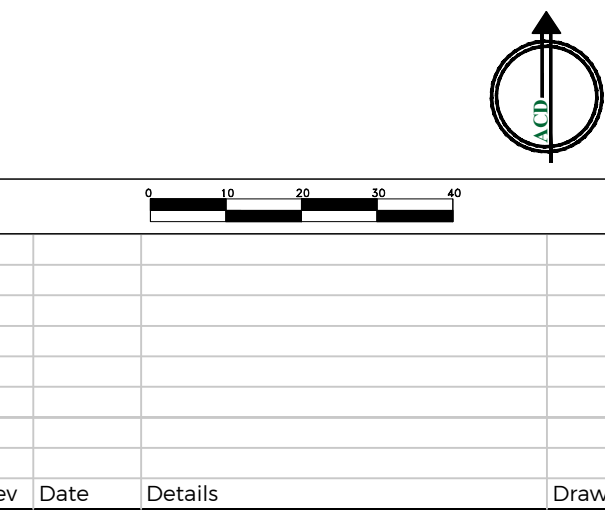


SPECIFICATION
All works generally, to comply with the written Soft Landscape Specification.

In case of quantity discrepancies, the quantities on the plan(s) take precedent over the quantities shown in the planting schedule.

NOTES:
DO NOT SCALE FROM DRAWING
NOT FOR CONSTRUCTION, FOR PLANNING PURPOSES ONLY

- Legend**
- Tarmac to road and footpaths. Laid in line with engineer's details
 - Keyblok Vintage paving blocks 200 x 100 x 50mm in Charcoal laid in herringbone pattern to shared surfaces from Marshalls or similar and approved. Laid in line with engineer's details.
 - Keyblok paving blocks 200 x 100 x 50mm in Burnt Ochre laid in herringbone pattern to private parking areas from Marshalls or similar and approved. Laid in line with engineer's details.
 - Proposed crossing; Keyblok paving in brindle laid in stretcher bond pattern from Marshalls or similar and approved. Laid in line with engineer's details.
 - Conservation X Textured Paving in Silver Grey and Blue Grey, 63mm thick, mixed sizes laid in stretcher bond pattern to Piazza and path. From Marshalls or similar and approved.
 - Pedestrian grade asphalt path to diverted PRoW and footpaths across open space.
 - Tegula blocks mixes sizes in Pennant Grey laid in stretcher bond to pavements. From Marshalls or similar and approved. Laid in line with engineer's details.
 - Tegula blocks mixes sizes in Harvest laid in stretcher bond to house paths. From Marshalls or similar and approved. Laid in line with engineer's details.
 - Proposed Hardwood Seat from Blueton Street Furniture Ltd product code 0802.02 or similar and approved.
 - 1200mm high split chestnut post and rail fence with 100 x 100mm stock-proof mesh stapled to outside face. With 2 no. self-closing softwood gates fitted with thumb latches.
 - Knee rail fence



Rev	Date	Details	Drawn
-----	------	---------	-------



HEAD OFFICE
Rodbourne Rail Business Centre, Grange Lane,
Malmesbury, SN16 0ES
Tel: 01666 825646

4 & 5 The Old Mill, Fry's Yard, Bridge Street,
Codalming, GU7 1HP
Tel: 01483 425714

Suite 6, Crescent House, Yonge Close,
Eastleigh, SO50 9SX
Tel: 02382 026300

email: mail@acdenv.co.uk
www.acdenvironmental.co.uk



scheme: Land at Mercer Road
client: Riverdale Developments Ltd
drawing: Hard Landscape Proposals
date: December 2024
scale: 1:1000 @ A1
drawing no: RIV22501_12 -overall
drawn: PHD checked: RH

Copyright of ACD Environmental Ltd. All rights described in Chapter IV of the Copyright, Designs and Patents Act 1988 have been generally asserted. 2011. Copyright of this plan remains with ACD until all fees have been paid in full.