

ALL DIMENSIONS ARE IN mm UNLESS NOTED OTHERWISE

N.G.R | E: 516957 | N: 130630

NOTES:

EXISTING VF/TEF 2No. ANTENNAS MOUNTED ON YOKE BRACKET
FIXED TO 2.5m HIGH SUPPORT POLE ON STEEL BEAM

TOP OF EXISTING VF/TEF
ANTENNAS +22.50m A.G.L.

EXISTING EE 2No. ANTENNAS AND
1No. ERS FIXED ON SUPPORT POLE

EXISTING VF/TEF 2No. ERS'S MOUNTED
BEHIND THE ANTENNA POLES

U/S OF EXISTING VF/TEF
ANTENNAS +20.50m A.G.L.

UPPER ROOF LEVEL
+19.60m A.G.L.

LOWER ROOF LEVEL
+17.0m A.G.L.

LOWER ROOF LEVEL
+10.90m A.G.L.

EXISTING EE 2No. ANTENNAS AND
1No. ERS FIXED ON SUPPORT POLE

EXISTING 2.6m HIGH HOOPED ACCESS LADDER

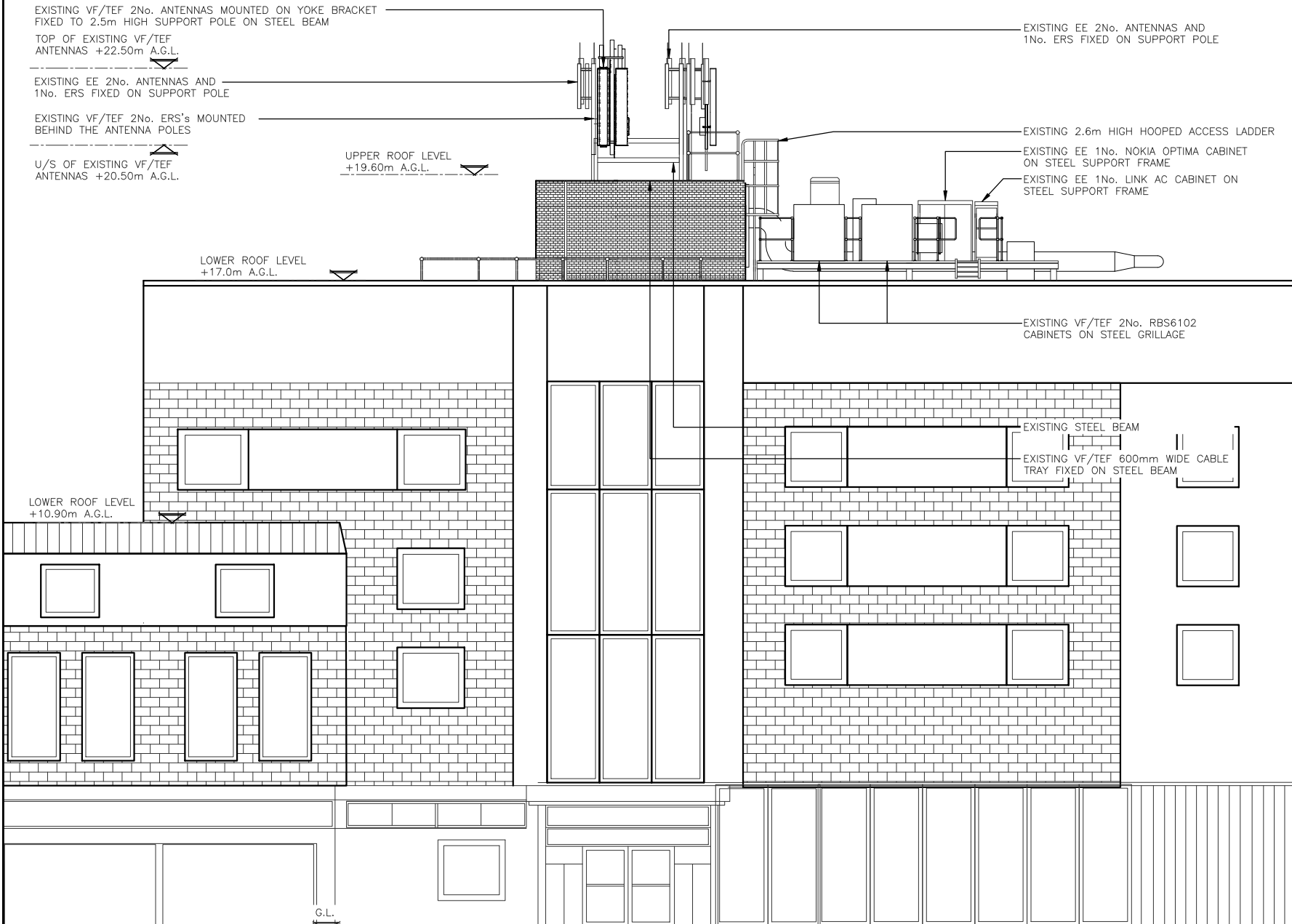
EXISTING EE 1No. NOKIA OPTIMA CABINET
ON STEEL SUPPORT FRAME

EXISTING EE 1No. LINK AC CABINET ON
STEEL SUPPORT FRAME

EXISTING VF/TEF 2No. RBS6102
CABINETS ON STEEL GRILLAGE

EXISTING STEEL BEAM

EXISTING VF/TEF 600mm WIDE CABLE
TRAY FIXED ON STEEL BEAM



2A	AMEND AS PER COMMENTS	AMB	DH	20.10.25
1A	CONSTRUCTION ISSUE	AMB	DH	14.10.25
REV	MODIFICATION	BY	CH	DATE



Cell Name	Opt.
TRAVEL LODGE	-

Cell ID No

CSID	-	VF	-	TEF
1014538	-	30134VF	-	N/A
Project No.	-	N/A	-	N/A
12273973	-	SWS_CST002	-	-

Site Address / Contact Details

TRAVEL LODGE
WORTHING ROAD
HORSHAM
WEST SUSSEX
RH12 1SQ

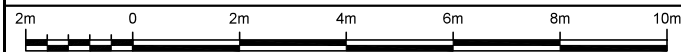
Drawing Title:
EXISTING ELEVATION

Purpose of issue:
CONSTRUCTION

Drawing Number: 300

Surveyed By: CP Original Sheet Size: A3 Pack Issue: 2A

Drawn: AMB Date: 14/10/25 Checked: DH Date: 14/10/25 3A



1:100