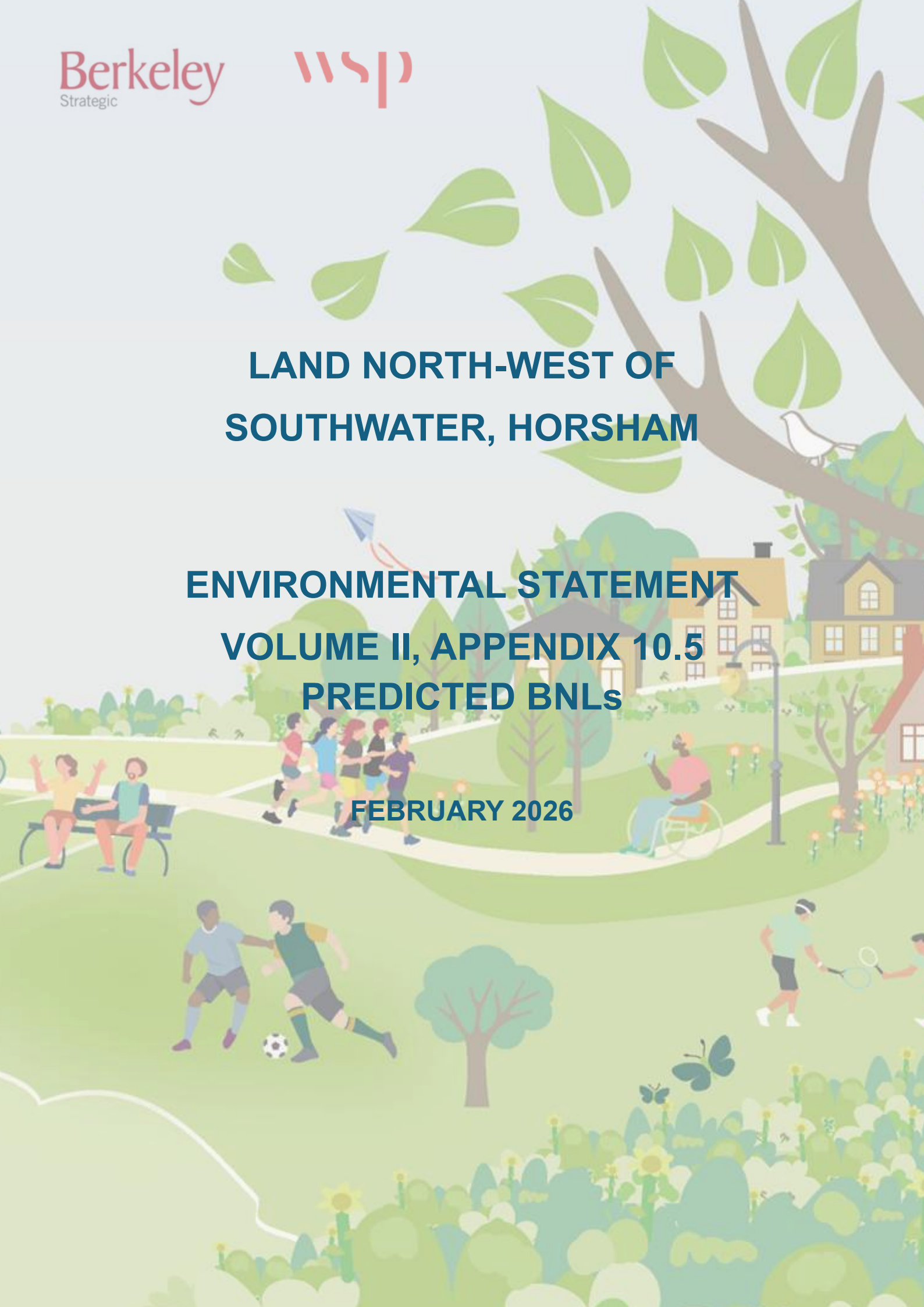


**LAND NORTH-WEST OF
SOUTHWATER, HORSHAM**

**ENVIRONMENTAL STATEMENT
VOLUME II, APPENDIX 10.5
PREDICTED BNLs**

FEBRUARY 2026





CONTENTS

APPENDIX 10.5 PREDICTED ROAD TRAFFIC NOISE LEVELS	1
--	----------

TABLES

Table 1 - Predicted BNLs for Road Links Assessed within Noise and Vibration Chapter	1
---	---

APPENDIX 10.5 PREDICTED ROAD TRAFFIC NOISE LEVELS

Table 1 presents the predicted basic noise levels (BNLs) for the road links assessed within **Chapter 10: Noise and Vibration**.

Table 1 - Predicted BNLs for Road Links Assessed within Noise and Vibration Chapter

Link Number	Name	Predicted BNL, dB L _{A10,18hr}		
		2024 Baseline	2036 Without PD	2036 With PD
3820-3586	A24 SB south of Hop Oast RAB	73.3	74.2	74.2
3820-3814	Hop Oast RAB	66.3	66.6	66.9
3588-3814	A24 NB south of Hop Oast RAB	72.8	75.3	75.4
3814-3818	Hop Oast RAB	71.1	71.9	72.1
3824-3820	Hop Oast RAB	71.3	72.1	72.1
3818-3822	Hop Oast RAB	70.0	71.1	71.1
3828-3824	Hop Oast RAB	70.4	71.3	71.4
3834-3824	Worthing Road SB north of Hop Oast RAB	60.5	60.3	60.1
3832-3828	Hop Oast RAB	71.7	73.0	73.0
8270-3832	A24 SB north of Hop Oast RAB	74.7	75.5	75.6
3822-3832	Hop Oast RAB	65.8	66.5	66.5
3828-3834	Worthing Road NB north of Hop Oast RAB	65.9	68.0	67.9
8206-8202	A24 SB north of Hop Oast RAB	72.2	73.0	73.1
8210-8202	A24 SB slip road north of Hop Oast RAB	64.8	66.6	66.7
8356-8203	A24 NB north of Hop Oast RAB	73.1	74.1	74.3
8203-8205	A24 NB north of Hop Oast RAB	71.3	72.3	72.5
8203-8214	A24 NB slip road north of Hop Oast RAB	63.3	64.3	64.3
8202-8270	A24 SB north of Hop Oast RAB	74.3	75.5	75.6
3822-8288	A24 NB north of Hop Oast RAB	68.7	69.8	69.8
8287-8288	RAB slip one way	61.5	62.5	63.1
8288-8289	A24 NB north of Hop Oast RAB	73.9	74.7	74.8
8289-8356	A24 NB north of Hop Oast RAB	73.9	74.7	74.8
3614-3398	Shiplely Road	58.9	60.6	60.8
3614-3584	Mill Straight	60.9	61.9	62.0
3678-3614	Worthing Road south of Hop Oast RAB	60.2	60.7	61.0
11019-3678	Church Lane	59.1	62.5	60.3

Link Number	Name	Predicted BNL, dB LA10,18hr		
		2024 Baseline	2036 Without PD	2036 With PD
11019-3742	Church Lane	59.1	62.5	61.1
11002-3846	Two Mile Ash Road	59.1	62.5	62.9
10219-3678	Worthing Rd (South of Chessall Avenue)	53.1	55.1	62.0
10219-3758	Worthing Rd (South of Southwater St)	53.1	55.1	56.0
3742-3712	Two Mile Ash Road	56.8	59.8	59.9
11002-3742	Two Mile Ash Road	54.3	59.8	57.2
11000-10211	Worthing Rd (North of Southwater St)	63.6	63.4	64.5
10211-3758	Worthing Rd (North of Southwater St)	63.6	63.4	62.0
11000-8287	Worthing Rd (North of Southwater St)	63.6	63.4	65.9
3768-3758	Southwater Street	57.4	60.7	61.4
8287-3818	Worthing Rd (North of Southwater St)	66.4	66.3	66.7
3890-3834	Worthing Road north of Hop Oast RAB	67.7	68.5	68.4
3854-3846	Christ's Hospital Road	57.2	59.5	62.4
3890-3846	Two Mile Ash Road north of CH Rd)	57.4	60.3	60.8

PD - Proposed Development

LP – Local Plan

RAB – Roundabout



WSP House
70 Chancery Lane
London
WC2A 1AF

wsp.com